



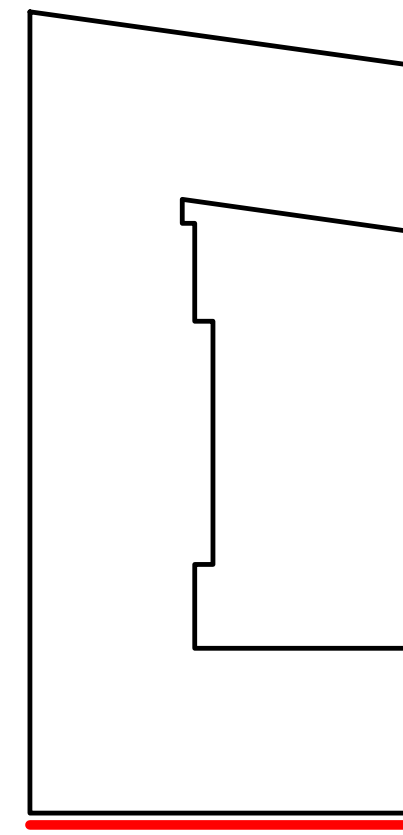
elness swenson graham architects
 500 WASHINGTON AVENUE SOUTH
 MINNEAPOLIS, MINNESOTA 55415
 P. 612.339.3508
 F. 612.339.5382
 WWW.ESGARCH.COM

I hereby certify that this document was prepared by me or under my direct supervision and that I am a duly licensed architect under the laws of the State of Minnesota.
 Signature _____
 Typed or Printed Name _____
 License # Date _____

NOT FOR CONSTRUCTION

PUD EXTERIOR MATERIAL KEYNOTES

- 1A BRICK - COLOR #1
- 1B BRICK - COLOR #2
- 2A STONE - COLOR #1
- 2B CAST STONE - COLOR #2
- 5A PREFINISHED METAL PANEL - COLOR #1
- 5D COMPOSITE METAL PANEL - COLOR #1
- 5E COMPOSITE METAL PANEL - COLOR #2
- 5F PREFINISHED METAL WINDOW SILL PANEL - COLOR #1
- 6A FIBER CEMENT PANEL, PAINTED - COLOR #1
- 6B FIBER CEMENT PANEL, PAINTED - COLOR #2
- 8A COMPOSITE WINDOW UNIT
- 8B PREFINISHED ALUMINUM STOREFRONT SYSTEM
- 9C COMPOSITE SLIDING PATIO DOOR
- 8D ALUMINUM OUTSWING PATIO DOOR
- 9A DECORATIVE MECHANICAL GRILLE
- 10A PREFINISHED METAL CAP FLASHING
- 10B PREFINISHED METAL FLASHING
- 12A METAL BALCONY WITH GLASS PANEL RAILING
- 12B PREFINISHED METAL CANOPY



KEY PLAN

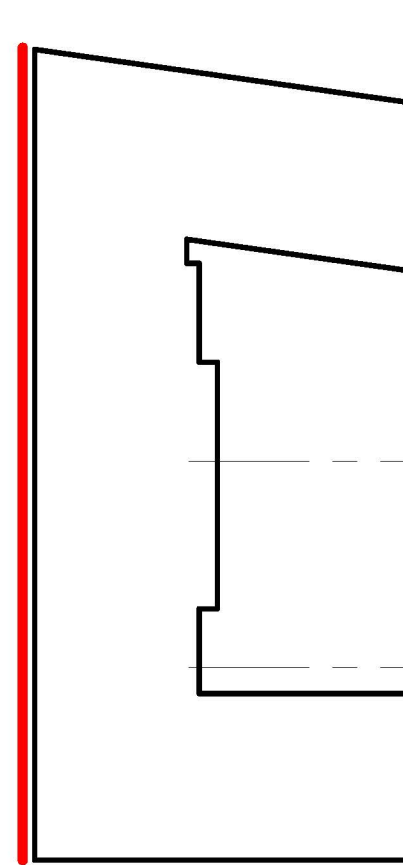
Exterior Material	Percentage	
South Elevation (Woonerf)		
Brick 1A/1B (Class I)	32%	70%
Glazing (Class I)	34%	
Stone 2A (Class I)	3%	
Cast Stone 2B (Class II)	1%	
Metal Panel 5A (Class II) (Accent Color)	4%	30%
Composite Metal 5D/5E (Class II)	10%	
Fiber Cement Panel 6A/6B (Class II)	14%	
Overhead Door/HM Door	2%	
	100%	



1 PH2- SOUTH ELEVATION
 PH2 A3.1 3/32" = 1'-0"

NOTE: FINAL PROPOSED BUILDING SIGNAGE TO BE DETERMINED AND MADE PART OF FUTURE CITY SUBMISSION FOR APPROVAL.

Exterior Material	Percentage	
West Elevation (Utica Ave.)		
Brick 1A/1B (Class I)	35%	72%
Glazing (Class I)	32%	
Stone 2A (Class I)	6%	
Cast Stone 2B (Class II)	1%	
Metal Panel 5A (Class II) (Accent Color)	4%	28%
Composite Metal 5D/5E (Class II)	6%	
Fiber Cement Panel 6A/6B (Class II)	18%	
	100%	



KEY PLAN



2 PH2- WEST ELEVATION
 PH2 A3.1 3/32" = 1'-0"

PUD AMENDMENT

2018-09-21

ORIGINAL ISSUE: -
 REVISIONS

No.	Description	Date

218523
 PROJECT NUMBER
 ESG DRAWN BY ESG CHECKED BY
 KEY PLAN

ELAN WEST END

EXTERIOR ELEVATIONS
PH2 A3.1