

St. Louis Park 2040 Comprehensive Plan summary

Creating our city's future

City of St. Louis Park vision and strategic priorities

Follow the city's strategic priorities

In 2018, the St. Louis Park City Council adopted the following five strategic priorities. Look for the icons throughout this publication to read about how the city is working to meet these priorities.

St. Louis Park is committed to:



Being a leader in racial equity and inclusion in order to create a more just and inclusive community for all.



Continuing to lead in environmental stewardship.



Providing a broad range of housing and neighborhood-oriented development.



Providing a variety of options for people to make their way around the city comfortably, safely and reliably.



Creating opportunities to build social capital through community engagement.



St. Louis Park is a first-ring suburb, located just west of Minneapolis. It covers 10 square miles and is home to nearly 50,000 people in 35 neighborhoods.

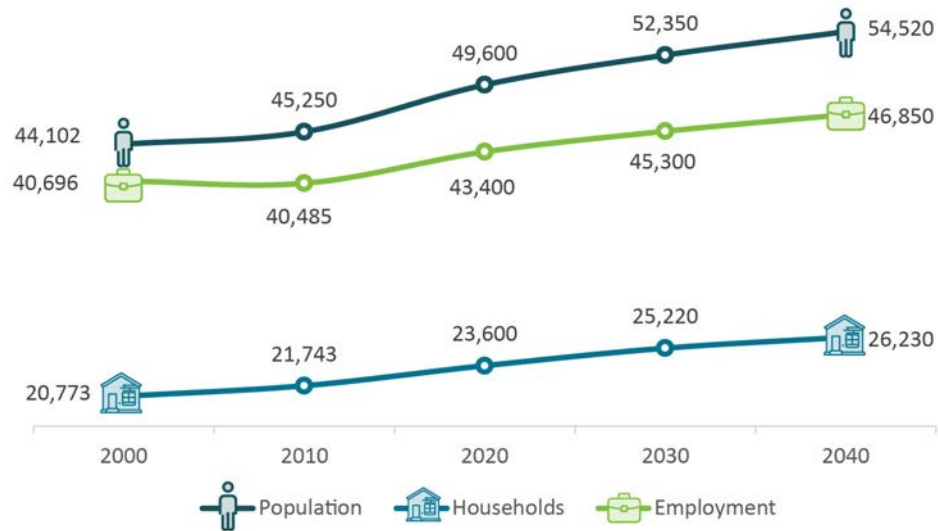
Visit www.stlouispark.org/slp2040 to learn more about the 2040 Comprehensive Plan.

Comprehensive planning



The 2040 Comprehensive Plan looks to the future with the city's five strategic priorities as guideposts. It sets goals, strategies and priorities for the future of the city in a number of areas, including land use, transportation, housing, parks, utilities and capital improvements.

St. Louis Park's plan also includes racial equity, climate and energy, economic development and redevelopment, community health and safety, and a plan for each of its 35 neighborhoods.



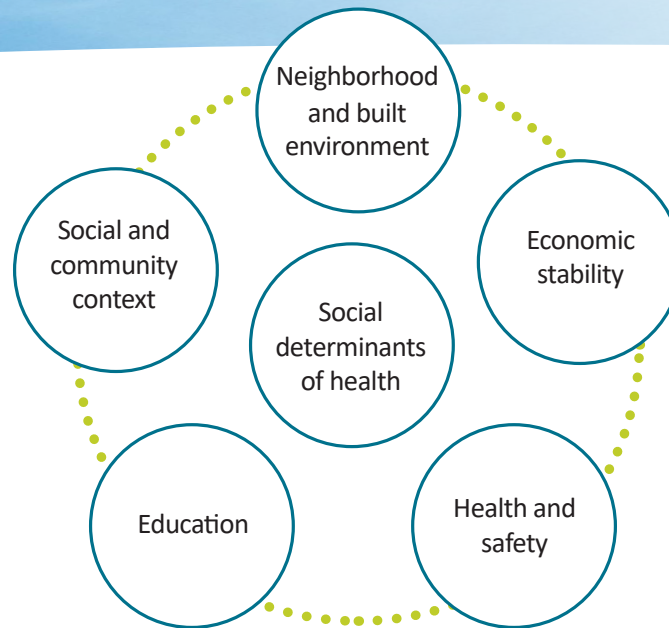
Growth
and
change

St. Louis Park has been steadily growing over the past 20 years. Redevelopment and revitalization is taking place in many areas, breathing fresh life into the city with new housing options and more jobs and services within walking distance.

Community health and safety



Strategic priority: Creating opportunities to build social capital through community engagement.



Neighborhoods are considered the backbone of a healthy community. As the community and neighborhoods face change over time, the city values the preservation and enhancement of each neighborhood's unique sense of identity. Engaging the community to build strong neighborhood connections is a long-held value in St. Louis Park. Neighborhoods where people know and watch out for each other is critical to our health and quality of life.

The *plan by neighborhood* section of the 2040 Comprehensive Plan takes a closer look at the future of each of the 35 neighborhoods.

Racial equity and inclusion



Strategic priority: Being a leader in racial equity and inclusion in order to create a more just and inclusive community for all.

St. Louis Park is becoming more racially diverse. To address racial equity and inclusion, the city has adopted the following goals:

- Break down barriers in creating a just and inclusive community for all.
- Ensure racial equity in city services and programs to make a tangible difference for all.
- Continue to create opportunities to build social capital through community engagement.

1 out of **5** St. Louis Park residents is a **person of color or indigenous**



■ African American ■ Asian
■ Hispanic ■ Two or more
■ American Indian ■ White

Environmental stewardship – climate and energy



Strategic priority: Continuing to lead in environmental stewardship.



Photo by Emmy Pearson

City youth have been leaders in the climate planning initiative.



Solar panels have been installed on city buildings, including Fire Station 2 and the Municipal Service Center.

St. Louis Park is addressing sustainability and the environment in many ways. In 2017, the city passed a Climate Action Plan with the following goals:

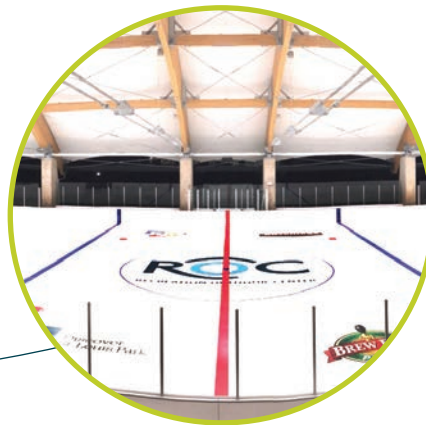
- Reduce energy consumption in large commercial buildings by 30 percent.
- Reduce energy consumption in small to mid-sized commercial buildings.
- Design and build all new construction to be net-zero energy.
- Reduce energy consumption in residential buildings by 30 percent.
- Achieve 100 percent renewable energy.
- Reduce vehicle emissions by 25 percent.
- Reduce solid waste by 50 percent.

Environmental stewardship – parks, open space and natural resources



Westwood Hills Nature Center interpretive center

Residents highly value the city's extensive park system and natural areas, consistently ranking them as top features of their neighborhoods. The city has 52 parks on more than 850 acres, including neighborhood parks and playgrounds, The Rec Center, the ROC and Westwood Hills Nature Center. Parks are very accessible for residents and used extensively. Park facilities and recreation programs are continually reassessed to meet current and future needs.



ROC – Recreation Outdoor Center

A livable community – land use and housing



Strategic priority: Providing a broad range of housing and neighborhood-oriented development.

St. Louis Park's land use and housing plans place emphasis on:

- Neighborhood commercial nodes that include essential commercial services, contribute to neighborhood identity and offer gathering opportunities.
- Transit-oriented, high density, well-connected, mixed-use development in light rail transit station areas.
- More diverse and creative housing choices.
- The livability and unique character of each neighborhood.
- Affordable housing options for low- and moderate-income households.



A livable community – economic development and redevelopment



St. Louis Park's economic development and redevelopments plans include:

- Development activities that enhance the livability, diversity and vitality of the community.
- Expansion, redevelopment and revitalization of commercial, industrial and business park areas through environmentally sustainable developments.
- Retention of high-quality businesses and employment.
- Assisting in the startup, growth, diversification and expansion of the city's small businesses.
- Recruitment of new businesses that are compatible and complementary to the community.

Mobility – getting around town



Strategic priority: Providing a variety of options for people to make their way around the city comfortably, safely and reliably.



The priorities for mobility in St. Louis Park have evolved to prioritize walking first, followed by bicycling and transit use and then motor vehicle use.



Roundabouts at Louisiana Avenue and Highway 7 provide smoother traffic flow at the intersection.



“Walking is the most equitable mode of transportation. It is free and available to almost everyone. If people have safe, comfortable and pleasant routes to walk they will – for fun, for exercise or for transportation.”

Denise Engen,
Active Living Hennepin County

Mobility – getting around town



Southwest Light Rail Transit (METRO Green Line Extension)

Southwest Light Rail Transit (SWLRT), also known as the METRO Green Line Extension, is under construction and is set to open in 2023. The transit line runs from Eden Prairie to downtown Minneapolis. Three stations will be located in St. Louis Park, at Louisiana Avenue, Wooddale Avenue and Beltline Boulevard.

Louisiana Avenue Station

Louisiana Avenue Station is at Louisiana Avenue and Oxford Street in a business and industrial area near Methodist Hospital. This station will have park-and-ride lots.

Wooddale Avenue Station

Wooddale Avenue Station is at Wooddale Avenue and 36th Street in a mixed-use area with housing, commercial businesses and employment opportunities. A new trail underpass for the Cedar Lake Regional Trail will separate bikes and pedestrians from auto and train traffic.

Beltline Boulevard Station

Beltline Station is at Beltline Boulevard just south of Highway 25. The area around the station includes housing, a variety of businesses and employment opportunities. It will include a park-and-ride ramp. The Cedar Lake Regional Trail will cross Beltline Boulevard on a bridge above the roadway, separating bikes and pedestrians from auto and train traffic.

Visit www.swlrt.org for more information.





Engaging
the community



Connecting
the community



Reducing
vehicle emissions



Creating
opportunities for all



Diversifying
housing choices


For city events, activities and news, visit www.stlouispark.org.

 nextdoor.com  [@stlouispark](https://twitter.com/stlouispark)  [@stlouispark](https://facebook.com/stlouispark)
 [@stlouispark](https://instagram.com/stlouispark)  [YouTube www.youtube.com/slpcable](https://www.youtube.com/slpcable)

 [govDelivery](mailto:govDelivery@stlouispark.org)

Sign up for email and text notifications: www.stlouispark.org/sign-up

Make service requests or receive city information via the app

 www.mystlouispark.org