

GENERAL EXTERIOR NOTES:

1. REFER TO G005 AND G006 FOR ADDITIONAL EXTERIOR MATERIAL KEYNOTE INFORMATION
2. REFER TO SPECIFICATION FOR DETAILED EXTERIOR MATERIAL INFORMATION



URBANWORKS

NORDIC WARE EXPANSION

5005 County Road 25
Minneapolis, MN 55416

© URBANWORKS ARCHITECTURE LLC 2019
901 NORTH THIRD STREET, SUITE 145, MINNEAPOLIS, MN 55401

CONSULTANT

PRELIMINARY
NOT FOR
CONSTRUCTION

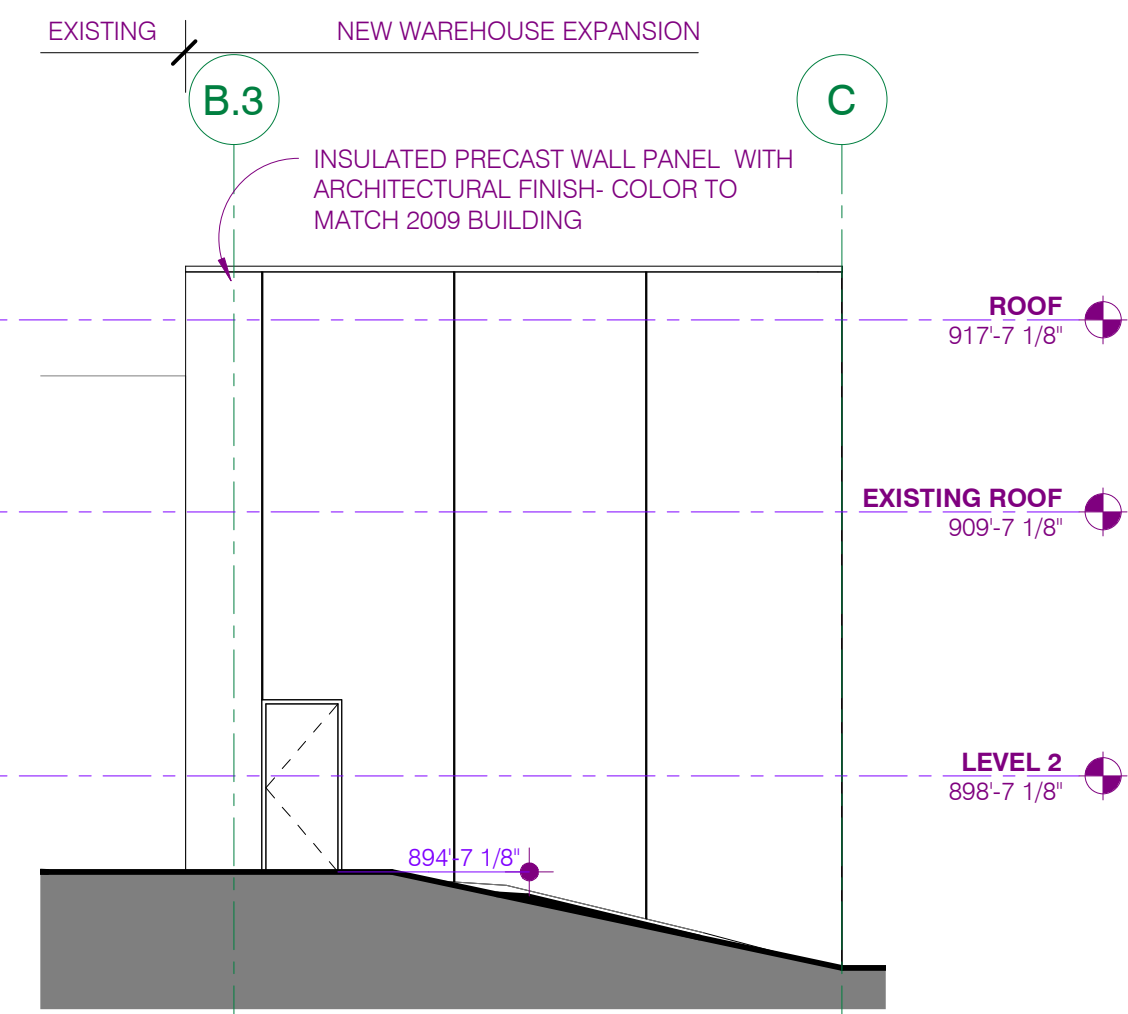
C.U.P. APPLICATION
9.21.2020

REVISIONS

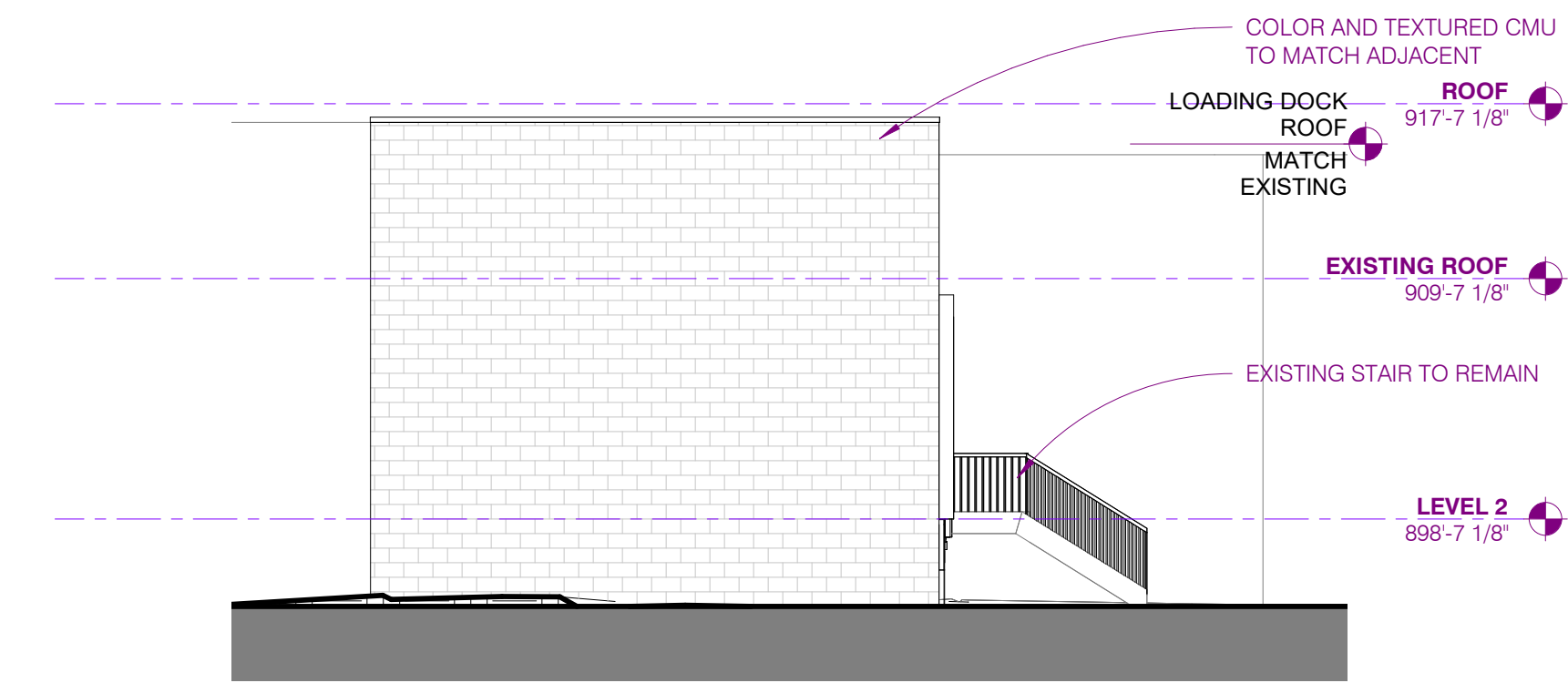
DATE 9/14/2020
PROJECT # 20-0019
PHASE SD
DRAWN BY MS / DPEH
CHECKED BY DPEH

BUILDING
ELEVATIONS

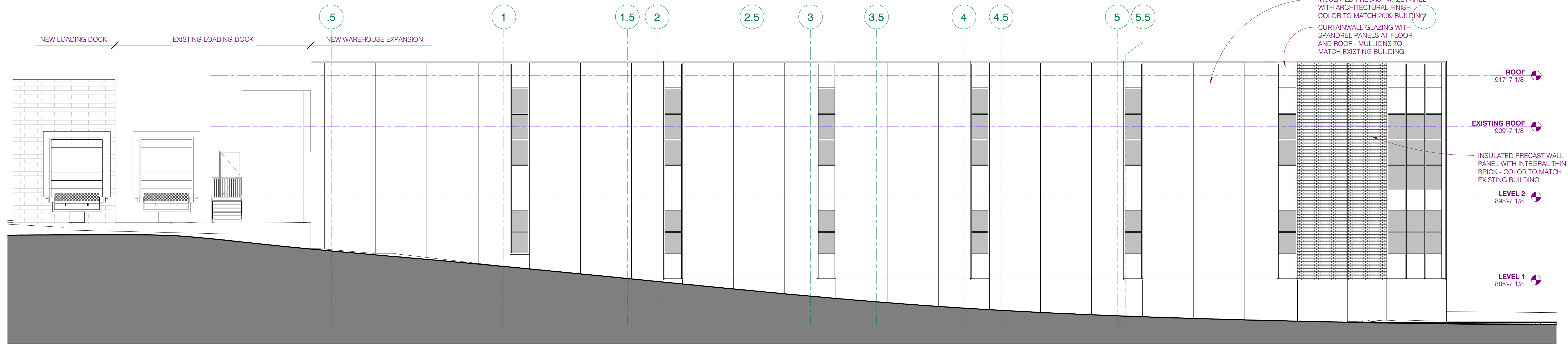
A301



4 SOUTH ELEVATION - WAREHOUSE
A301 1/8" = 1'-0"

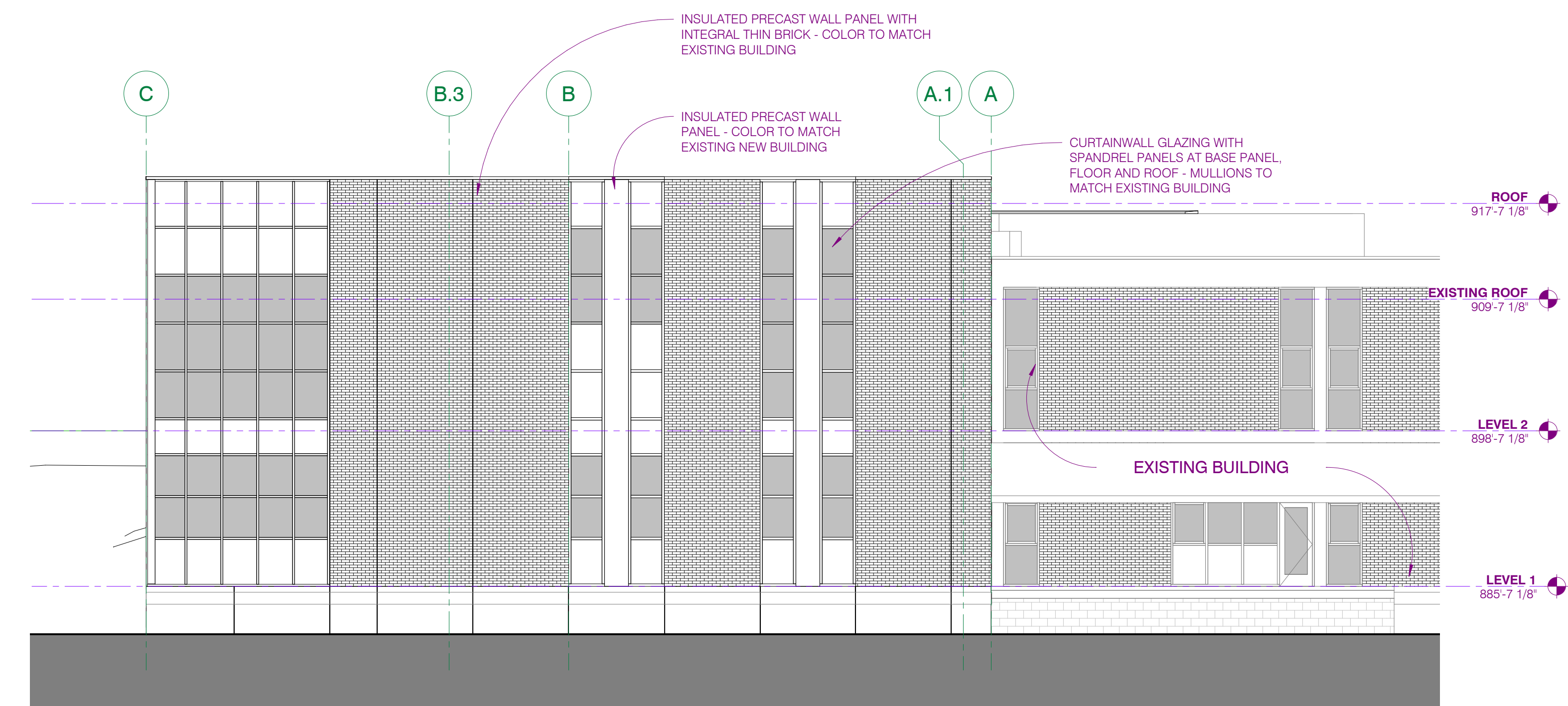


5 SOUTH ELEVATION - LOADING DOCK
A301 1/8" = 1'-0"



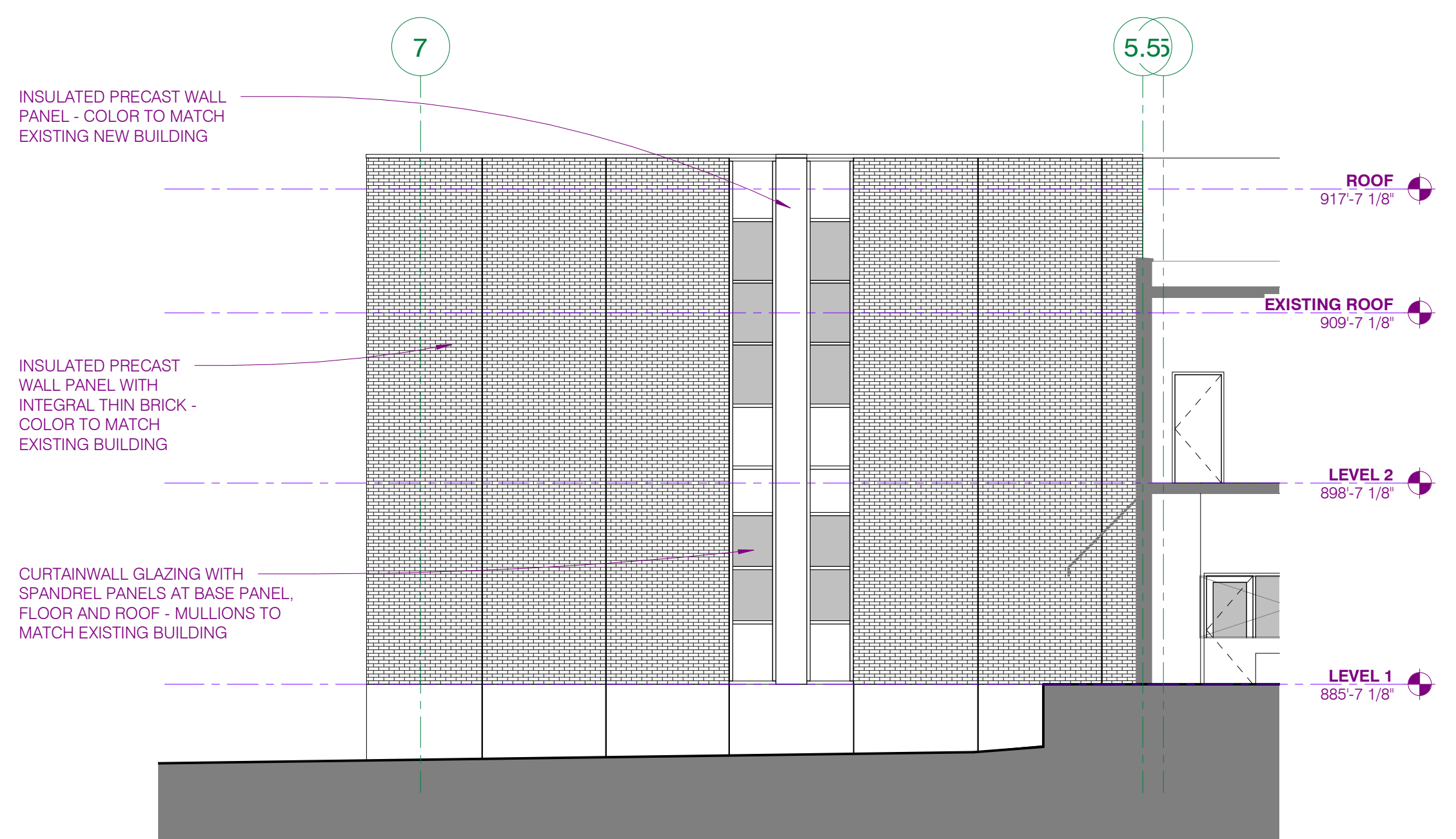
PRECAST WALL	5,119 SF	78.6%
BRICK WALL	476 SF	7.3%
GLAZING	918 SF	14.1%
TOTAL	6,513 SF	

3 EAST ELEVATION
A301 1/8" = 1'-0"



PRECAST WALL	419 SF	15.6%
BRICK WALL	1,329 SF	49.5%
GLAZING	935 SF	34.9%
TOTAL	2,683 SF	

2 NORTH ELEVATION
A301 1/8" = 1'-0"

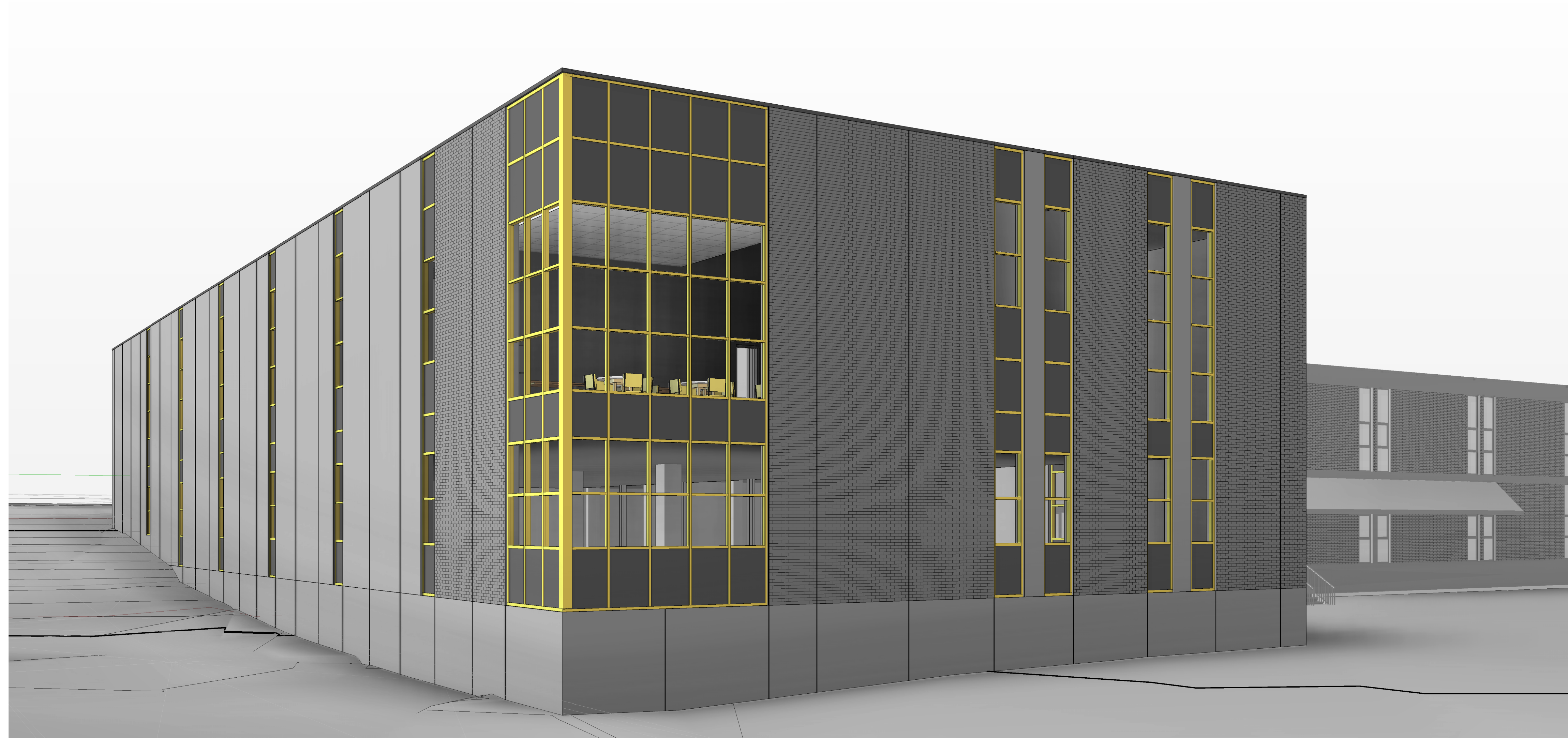


PRECAST WALL	280 SF	14.6%
BRICK WALL	1,440 SF	74.8%
GLAZING	204 SF	10.6%
TOTAL	1,924 SF	

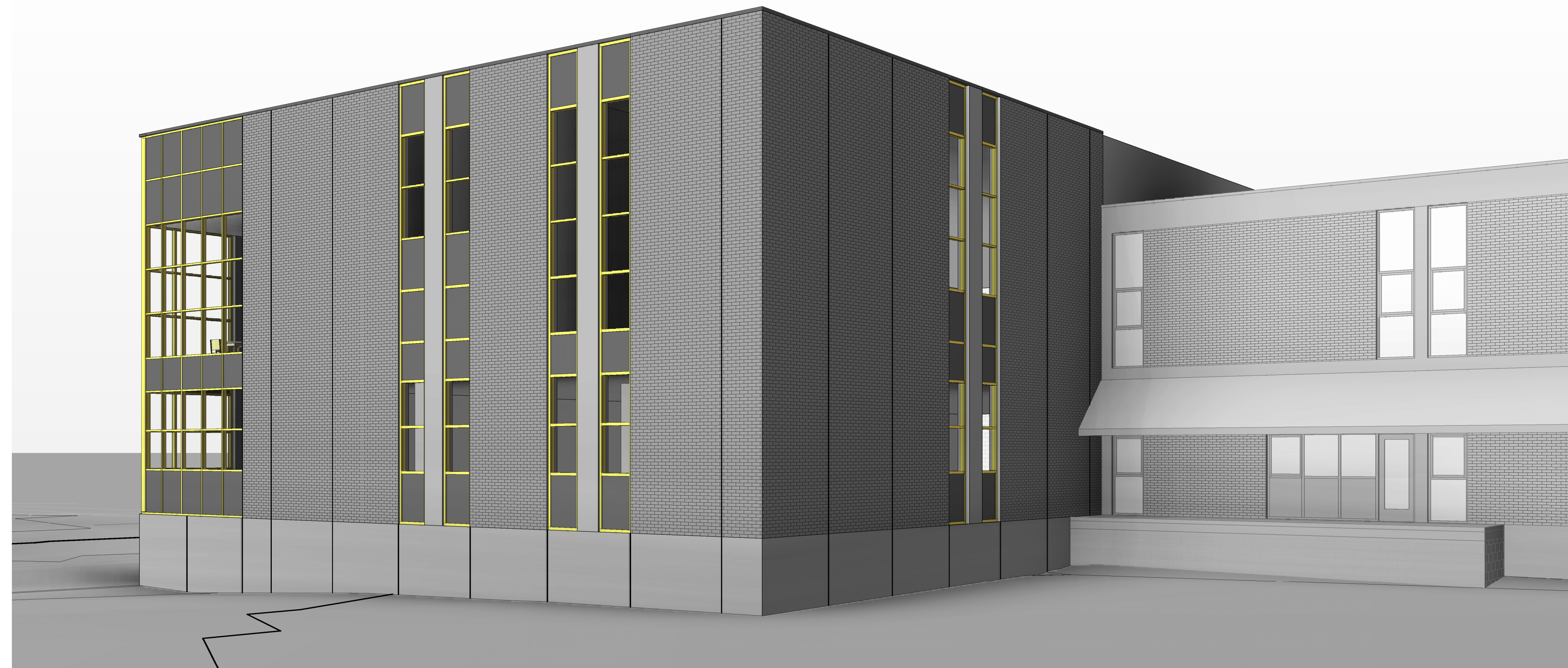
1 WEST ELEVATION
A301 1/8" = 1'-0"

C:\I\revit\Project Files\20-0019 A301 Central_dhsalard@urban-works.com.rvt

9/19/2020 5:15:08 PM



1 VIEW FROM NORTH EAST
A355



2 VIEW FROM NORTH WEST
A355