

(TOWNHOMES) ELEVATIONS



EXTERIOR ELEVATION A



EXTERIOR ELEVATION E

| MATERIAL CALC- EXTERIOR ELEVATION A | | |
|-------------------------------------|----------|------------|
| MATERIAL | AREA | PERCENTAGE |
| CLASS I: BRICK | 1,501.57 | 34% |
| CLASS I: GLASS | 1,284.89 | 29% |
| CLASS II: FIBER CEMENT SIDING | 667.93 | 15% |
| CLASS II: PRE-FINISHED METAL | 193.28 | 4% |
| CLASS II: PRE-FINISHED MTL SIDING | 784.14 | 18% |
| Grand total | | |
| CLASS I: | 63% | |
| CLASS II: | 37% | |

| MATERIAL CALC- EXTERIOR ELEVATION B | | |
|-------------------------------------|--------|------------|
| MATERIAL | AREA | PERCENTAGE |
| CLASS I: BRICK | 613.97 | 35% |
| CLASS I: GLASS | 563.64 | 32% |
| CLASS II: FIBER CEMENT SIDING | 349.22 | 20% |
| CLASS II: PRE-FINISHED METAL | 78.13 | 4% |
| CLASS II: PRE-FINISHED MTL SIDING | 160.77 | 9% |
| Grand total | | |
| CLASS I: | 67% | |
| CLASS II: | 33% | |

| MATERIAL CALC- EXTERIOR ELEVATION D | | |
|-------------------------------------|--------|------------|
| MATERIAL | AREA | PERCENTAGE |
| CLASS I: BRICK | 582.62 | 38% |
| CLASS I: GLASS | 223.89 | 15% |
| CLASS II: FIBER CEMENT SIDING | 275.79 | 18% |
| CLASS II: PRE-FINISHED MTL SIDING | 457.59 | 30% |
| Grand total | | |
| CLASS I: | 53% | |
| CLASS II: | 47% | |

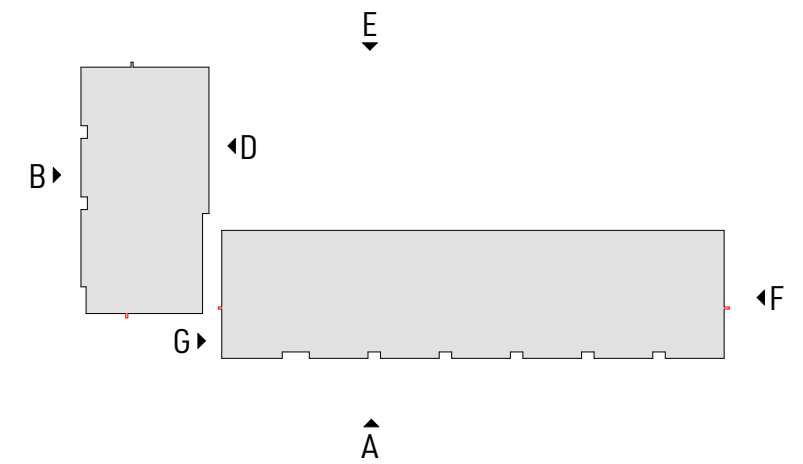
FIBER CEMENT SIDING IS BEING USED FOR UP TO 10% OF CLASS I EXTERIOR MATERIAL REQUIREMENT OF 60% OF THE EXTERIOR FACE.

| MATERIAL CALC- EXTERIOR ELEVATION E | | |
|-------------------------------------|----------|------------|
| MATERIAL | AREA | PERCENTAGE |
| CLASS I: BRICK | 1,706.4 | 41% |
| CLASS I: GLASS | 562.81 | 13% |
| CLASS II: FIBER CEMENT SIDING | 1,430.46 | 34% |
| CLASS II: PRE-FINISHED MTL SIDING | 490.8 | 12% |
| Grand total | | |
| CLASS I: | 54% | |
| CLASS II: | 46% | |

FIBER CEMENT SIDING IS BEING USED FOR UP TO 10% OF CLASS I EXTERIOR MATERIAL REQUIREMENT OF 60% OF THE EXTERIOR FACE.

| MATERIAL CALC- EXTERIOR ELEVATION F | | |
|-------------------------------------|--------|------------|
| MATERIAL | AREA | PERCENTAGE |
| CLASS I: BRICK | 528.23 | 58% |
| CLASS I: GLASS | 100 | 11% |
| CLASS II: PRE-FINISHED METAL | 30 | 3% |
| CLASS II: PRE-FINISHED MTL SIDING | 255.25 | 28% |
| Grand total | | |
| CLASS I: | 65% | |
| CLASS II: | 35% | |

| MATERIAL CALC- EXTERIOR ELEVATION G | | |
|-------------------------------------|--------|------------|
| MATERIAL | AREA | PERCENTAGE |
| CLASS I: BRICK | 540.49 | 60% |
| CLASS I: GLASS | 70 | 8% |
| CLASS II: PRE-FINISHED METAL | 29.93 | 3% |
| CLASS II: PRE-FINISHED MTL SIDING | 267.39 | 29% |
| Grand total | | |
| CLASS I: | 68% | |
| CLASS II: | 32% | |



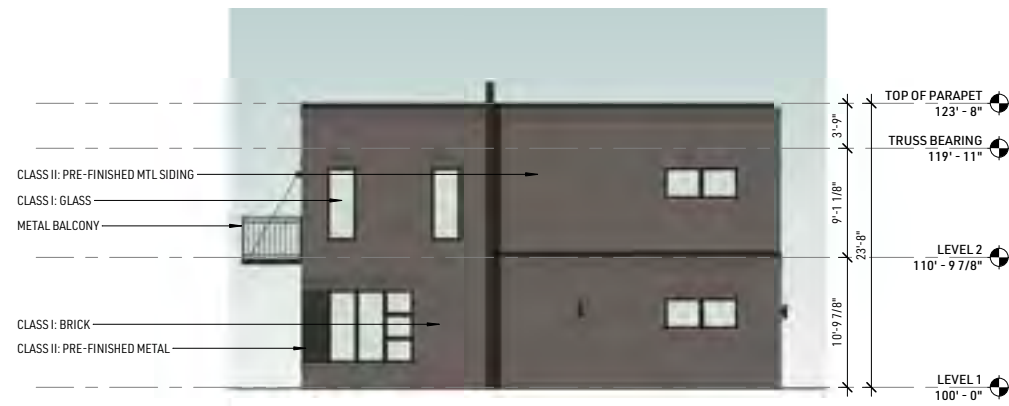
(TOWNHOMES) ELEVATIONS



EXTERIOR ELEVATION B



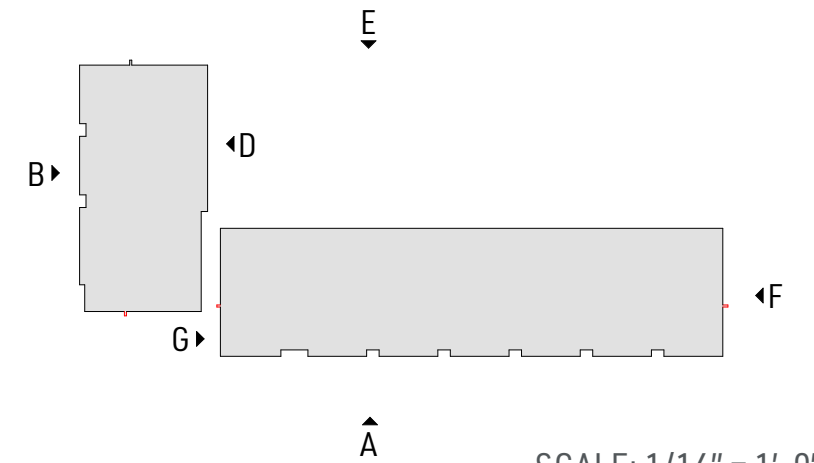
EXTERIOR ELEVATION D



EXTERIOR ELEVATION F



EXTERIOR ELEVATION G



SCALE: 1/16" = 1'-0"