

C:\Revit Local\20003-CB-SL\Louis Park-8115 HWY N 7 - mixed use v3_rjand@kaaswilson.com.rvt



1 CD South Elevation - West Half
1/8" = 1'-0"

Exterior Materials by Elevation

| Code | Description | Manufacturer | Color | Area | % |
|-------------|---|------------------|----------------------|----------------------|-----|
| East | | | | | |
| Class I | | | | | |
| 4.2 | BRICK - UTILITY - RUNNING BOND | Sioux City Brick | Vintage Black Smooth | 6,796 R ² | 52% |
| 4.4 | BRICK - UTILITY - RUNNING BOND | Cloud Ceramics | Light Ivory | 27 R ² | 0% |
| 8.1 | GLAZING | | | 2,617 R ² | 20% |
| Class II | | | | | |
| 4.1 | CMU - ABOVE GRADE - ROCKFACE | County Materials | Blackened Ash | 2,223 R ² | 17% |
| 7.1 | CFB - LAP SIDING ALTERNATING WIDTH 4'x7\"/> | | | | |

EXTERIOR MATERIALS

| Code | Description | Material Mark | Area | % | Image |
|-------------|---|------------------|----------------------|----------------------|-------|
| West | | | | | |
| Class I | | | | | |
| 4.2 | BRICK - UTILITY - RUNNING BOND | Sioux City Brick | Vintage Black Smooth | 6,447 R ² | 53% |
| 4.4 | BRICK - UTILITY - RUNNING BOND | Cloud Ceramics | Light Ivory | 3,622 R ² | 18% |
| 8.1 | GLAZING | | 4,308 R ² | 19% | |
| Class II | | | | | |
| 4.1 | CMU - ABOVE GRADE - ROCKFACE | County Materials | Blackened Ash | 4,637 R ² | 21% |
| 7.1 | CFB - LAP SIDING ALTERNATING WIDTH 4'x7\"/> | | | | |



2 CD South Elevation - East Half
1/8" = 1'-0"



1301 American Blvd E.
Suite 100
Bloomington, MN 55425
tel: (612) 879-6000
fax: (612) 879-6666
www.kaaswilson.com

Civil Engineer:
Loucks
7200 Hemlock Lane
Suite 300
Maple Grove, MN 55369

Structural Engineer:
Sandman Structural Engineers
10125 Crosstown Circle
#380
Eden Prairie, MN 55344

MEP Engineer:
Cain Thomas Associates Inc
4215 White Bear Pkwy
#100
St Paul, MN 55110

Project:
Rise on 7
8115 HWY 7
St Louis Park, MN 55426

Owner:
CB SLP LP
1080 Montreal Ave
St Paul, MN 55116

Project Number: 20003
Date: 05-28-2021

NOT FOR CONSTRUCTION

| Date | Revision |
|------|----------|
| | |
| | |
| | |

Rev. No.
Exterior Elevations
1/8" = 1'-0"
A500

Copyright Kaas Wilson Architects 5/27/2021 2:05:24 PM

NOT FOR CONSTRUCTION

Date:
Revision:

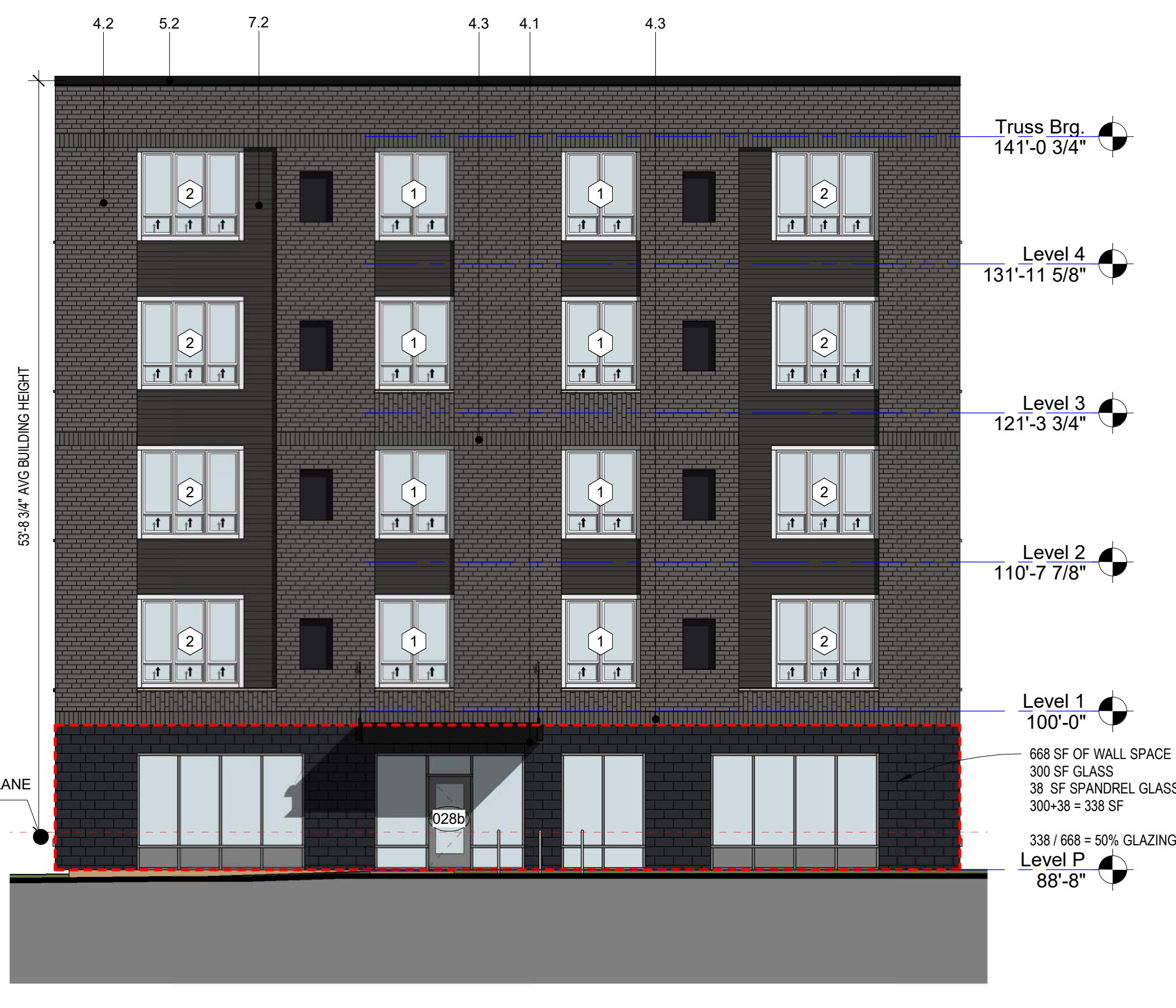
Rev. No.

Exterior Elevations
1/8" = 1'-0"
A501

C:\Revit Local\20003-CB-SLP\Louis Park-8115 HWY 7 - mixed use v3_rjand@kaaswilson.com.rvt



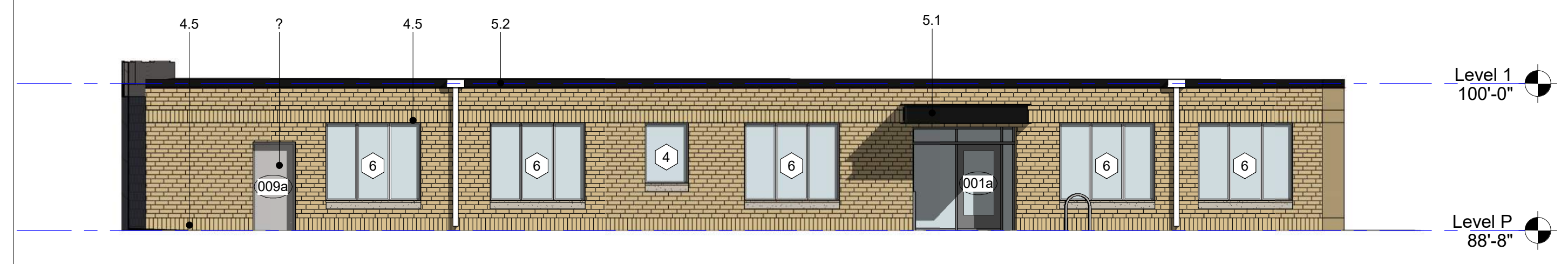
1 CD West Elevation
1/8" = 1'-0"



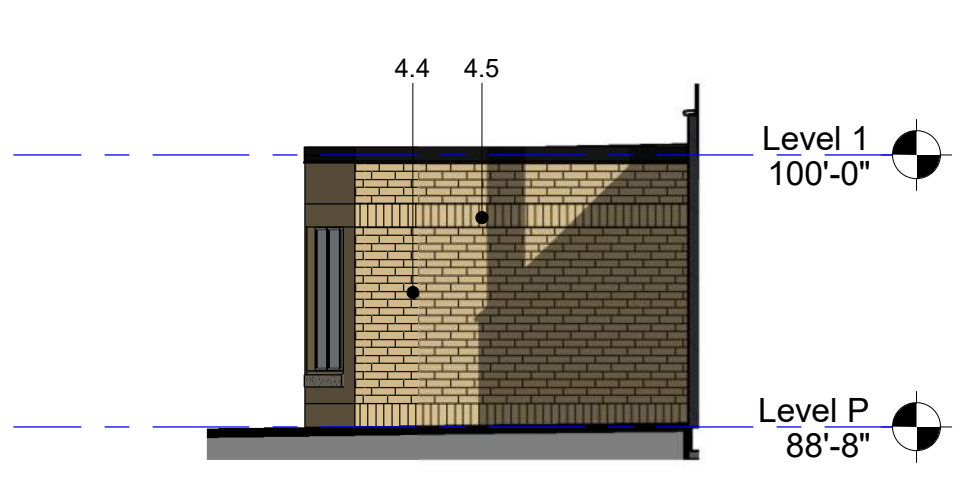
2 North Elevation - West
1/8" = 1'-0"



3 Inside Elevation - West Wing
1/8" = 1'-0"



4 Entry Lobby Elevation
1/8" = 1'-0"



5 Elevation - Side of Lobby
1/8" = 1'-0"



6 North Elevation - Middle
1/8" = 1'-0"

Copyright Kaas Wilson Architects | 5/27/2021 2:05:37 PM

C:\Revit Local\20003-CB-StLouis Park-8115 HWY N 7 - mixed use v3_rjand@kaaswilson.com.rvt

Copyright Kaas Wilson Architects | 5/27/2021 2:05:43 PM



3 Inside Elevation - East Wing
1/8" = 1'-0"



1 North Elevation - East
1/8" = 1'-0"



2 CD East Elevation
1/8" = 1'-0"