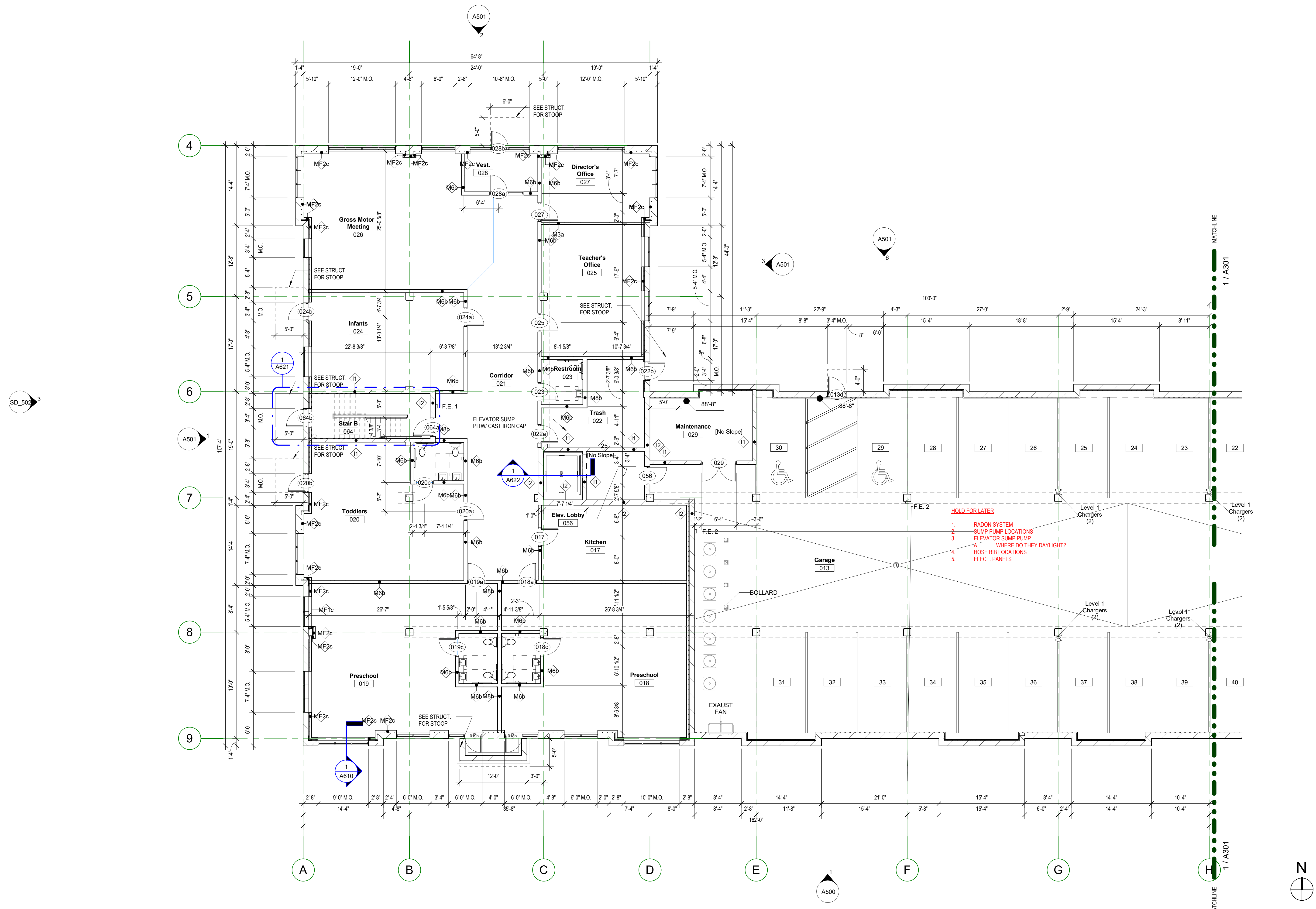
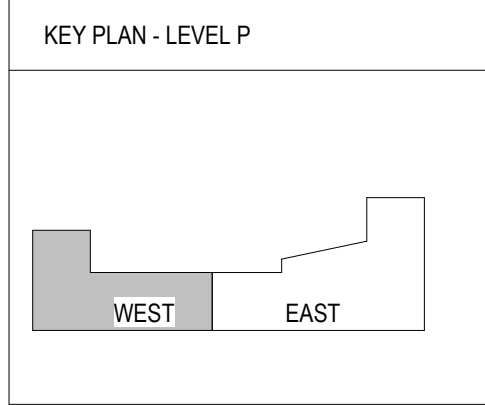


GARAGE PLAN GENERAL NOTES		
1. ALL DIMENSIONS AT EXTERIOR WALLS ARE TAKEN TO EXTERIOR FACE OF MASONRY AT CMU WALLS (OR EXTERIOR FACE OF CONCRETE AT CIP WALLS) OR CENTER OF STUD AT FRAMED WALLS, UNLESS NOTED OTHERWISE.	5. PROTECT ALL PLUMBING EQUIPMENT SEE PIPE SHIELD DETAILS ON A300	11. AT GARAGE LEVEL - USE FRPT WOOD STUDS OR METAL STUDS AND MOISTURE-RESISTANT GYP. BOARD.
2. ALL DIMENSIONS AT INTERIOR WALLS ARE TAKEN TO THE CENTER OF STUD AT FRAMED WALLS, AND FACE OF MASONRY AT CMU WALLS, UNLESS NOTED OTHERWISE.	6. 4" WHITE PAINT STRIPE TYPICAL AT ALL PARKING STALLS, 9'-0" CL TO CL, U.N.O.	13. PAINT ALL PRECAST COLUMNS IN THE PARKING AREA YELLOW.
3. SEE SHEET A010 & A011 FOR EXTERIOR AND INTERIOR WALL TYPES.	7. SLOPE CONCRETE TO FLOOR DRAINS AS NOTED.	
4. SEE SHEET A880-A882 FOR FIRE-CAULKING ASSEMBLIES AT PENETRATIONS. FIRE CAULKING USED BY EACH TRADE SHALL BE OF THE SAME MANUFACTURER - G.C. TO COORDINATE.	8. GEODETIC ELEVATION 930.33 FROM CIVIL PLANS = 100'-0" IN ARCHITECTURAL PLANS.	
	9. NUMBER ALL PARKING STALLS 50" AFF.	
	10. LOCATE A TYPE FE2 FIRE EXTINGUISHER EVERY 150' OF GARAGE. MEASURED FROM END TO END OF GARAGE SPACE. PROVIDE A FIRE EXTINGUISHER IN EACH ELEVATOR EQUIPMENT ROOM.	



1 Level P-West
1/8" = 1'-0"

Project:
Rise on 7
8115 HWY N 7
St Louis Park, MN 55426

Owner:
CB SLP LP
1080 Montreal Ave
St Paul, MN 55116

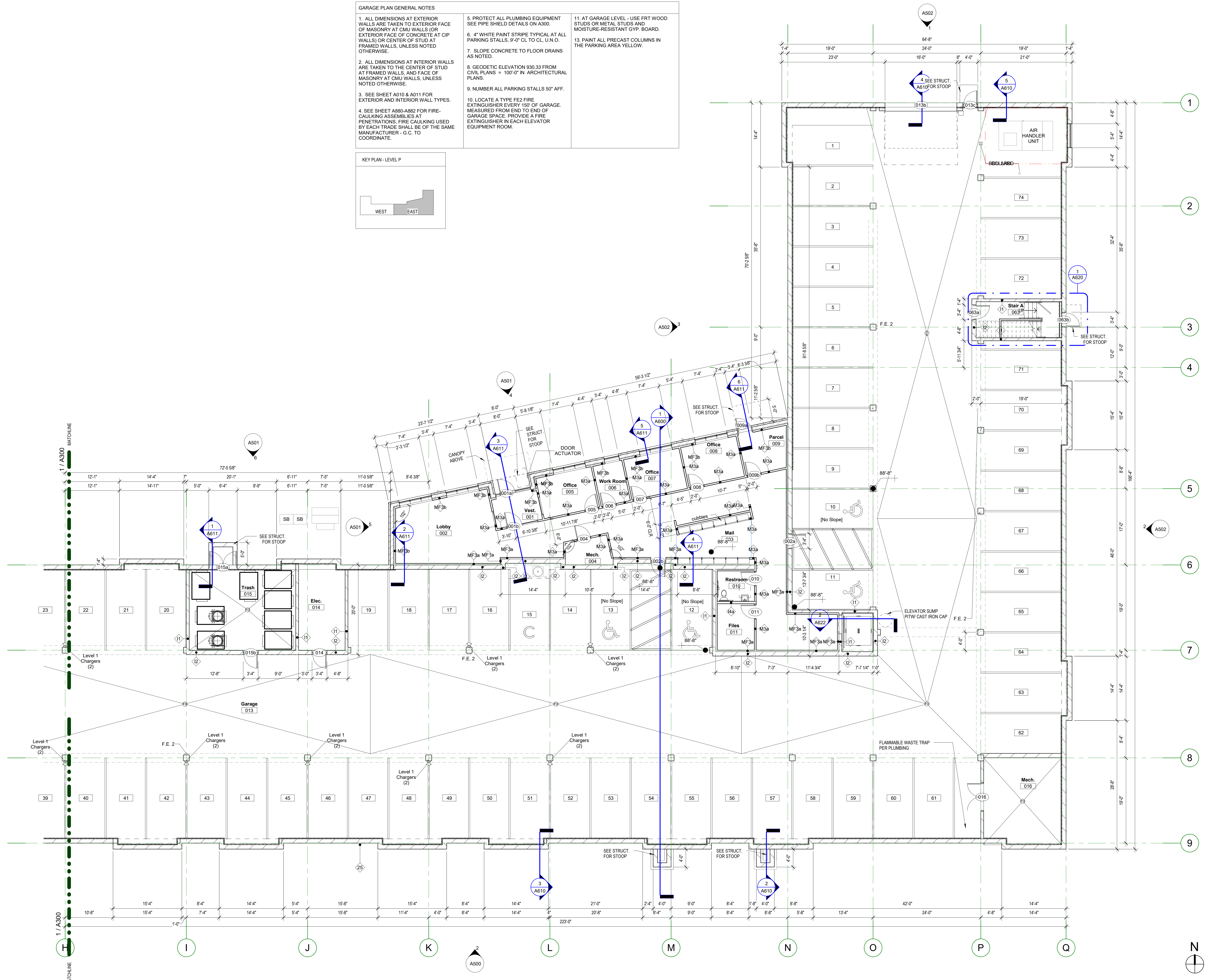
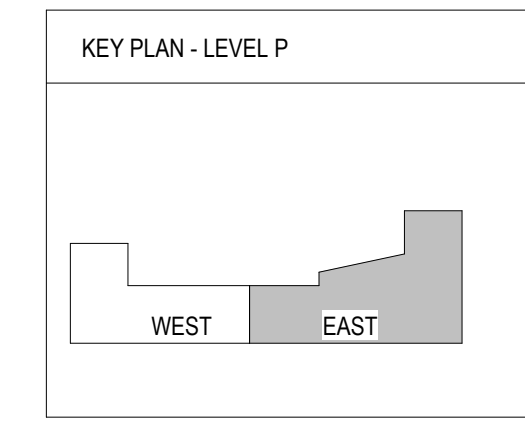
Project Number: 20003
Date: 06-02-2021

NOT FOR CONSTRUCTION

Rev. No.	Revision	Date

Level P West Plan
As indicated
A300

GARAGE PLAN GENERAL NOTES		
1. ALL DIMENSIONS AT EXTERIOR WALLS ARE TAKEN TO EXTERIOR FACE OF MASONRY AT CMU WALLS (OR EXTERIOR FACE OF CONCRETE AT CIP WALLS) OR CENTER OF STUD AT FRAMED WALLS, UNLESS NOTED OTHERWISE.	5. PROTECT ALL PLUMBING EQUIPMENT SEE PIPE SHIELD DETAILS ON A300.	11. AT GARAGE LEVEL - USE FRT WOOD STUDS OR METAL STUDS AND MOISTURE-RESISTANT GYP. BOARD.
2. ALL DIMENSIONS AT INTERIOR WALLS ARE TAKEN TO THE CENTER OF STUD AT FRAMED WALLS, AND FACE OF MASONRY AT CMU WALLS, UNLESS NOTED OTHERWISE.	6. 4" WHITE PAINT STRIPE TYPICAL AT ALL PARKING STALLS, 9'-0" CL TO CL, U.N.O.	13. PAINT ALL PRECAST COLUMNS IN THE PARKING AREA YELLOW.
3. SEE SHEET A010 & A011 FOR EXTERIOR AND INTERIOR WALL TYPES.	7. SLOPE CONCRETE TO FLOOR DRAINS AS NOTED.	
4. SEE SHEET A880-A882 FOR FIRE-CAULKING ASSEMBLIES AT PENETRATIONS. FIRE CAULKING USED BY EACH TRADE SHALL BE OF THE SAME MANUFACTURER - G.C. TO COORDINATE.	8. GEODETIC ELEVATION 930.33 FROM CIVIL PLANS = 100'-0" IN ARCHITECTURAL PLANS.	
	9. NUMBER ALL PARKING STALLS 50" AFF.	
	10. LOCATE A TYPE F22 FIRE EXTINGUISHER EVERY 150' OF GARAGE, MEASURED FROM END TO END OF GARAGE SPACE. PROVIDE A FIRE EXTINGUISHER IN EACH ELEVATOR EQUIPMENT ROOM.	



1301 American Blvd E.
Suite 100
Bloomington, MN 55425
tel: (612) 879-6000
fax: (612) 879-6666
www.kaaswilson.com

Civil Engineer:
Loucks
7200 Hemlock Lane
Suite 300
Maple Grove, MN 55369

Structural Engineer:
Sandman Structural
Engineers
10125 Crosstown Circle
#380
Eden Prairie, MN 55344

MEP Engineer:
Cain Thomas Associates Inc
4215 White Bear Pkwy
#100
St Paul, MN 55110

Project:
Rise on 7
8115 HWY N 7
St Louis Park, MN 55426

Owner:
CB SLP LP
1080 Montreal Ave
St Paul, MN 55116

Project Number: 20003
Date: 06-02-2021

NOT FOR CONSTRUCTION

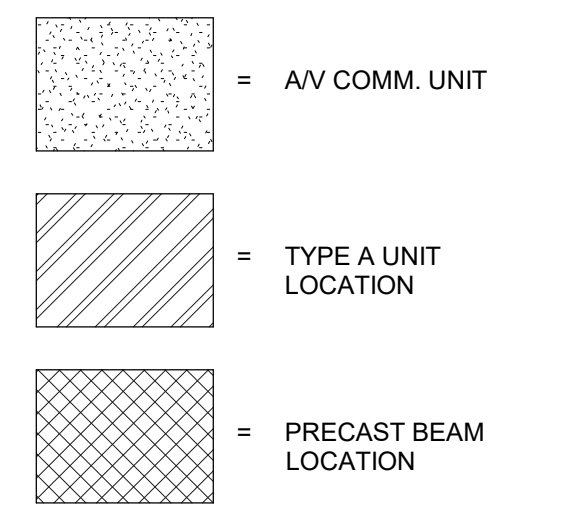
Rev. No.	Date	Revision

Level P East Plan

As indicated
A301

1 Level P-East
1/8" = 1'-0"

FLOOR PLAN GENERAL NOTES			
1. ALL DIMENSIONS AT EXTERIOR WALLS ARE TAKEN TO EXTERIOR FACE OF MASONRY AT CMU WALLS OR CENTER OF STUD AT FRAMED WALLS UNLESS NOTED OTHERWISE.	10. SEE A860 FOR GYP. BOARD CONTROL JOINTS.	19. NOT USED.	28. PROVIDE RATED ACCESS PANELS AT HOT WATER RECIRC. LINE. IF LOCATED IN RATED ASSEMBLY - SEE MECH.
2. ALL DIMENSIONS AT INTERIOR WALLS ARE TAKEN TO THE CENTER OF STUD. DIMENSIONS OF FURRING WALLS ARE TO FACE OF WALL.	11. ELECTRICAL APPURTENANCES TO BE MOUNTED FROM 15" - 48" AFF PER MN ACCESSIBILITY CODE SECTION 308. SEE A303.	20. RECESSED FIXTURES IN WOOD FRAME STRUCTURE. SEE A860.	29. CORRIDOR CEILINGS ARE TO BE COVERED WITH GYPSUM SHEATHING PER FLOOR ASSEMBLY. CEILINGS DROPPED FOR MECH. AT CORRIDORS ARE NOTED ON OVERALL BUILDING PLANS. KEEP DROPPED CEILINGS AS TIGHT/HIGH AS POSSIBLE.
3. UNLESS NOTED OTHERWISE, INTERIOR WALLS WITHOUT DESIGNATION ARE TYPE 13a.	12. ALL WINDOWS WITHIN 30" OF DOOR SWING SHALL BE TEMPERED.	21. SHAFT WALL INTERSECTIONS WITH STANDARD WALLS. SEE A860.	
4. 'FS' AT INTERIOR DIMENSIONS DENOTES DIMENSIONS TO FACE OF STUD WALL, 'CS' TO CENTER OF STUD WALL AND 'FW' DENOTES FACE OF WALL.	13. PROVIDE CABINET PULLS @ ALL KITCHENS AND BATHS.	22. AT ALL BEARING STUDS WITH PIPE PENETRATIONS, STRAP PLATES AS REQUIRED TO MAINTAIN STRUCTURAL INTEGRITY OF WALL.	
5. SEE SHEETS A010 & A011 FOR EXTERIOR AND INTERIOR WALL TYPES.	14. SEE SHEET A860 FOR FIRESTOPPING OF HVAC PENETRATIONS OF FLOOR/CEILING & WALL ASSEMBLIES.	23. SEE A840 FOR ROOF ACCESS DETAILS.	
6. SEE SHEET A011 FOR FLOOR-CEILING & ROOF-CEILING ASSEMBLIES.	15. SEE A500 - A501 FOR EXTERIOR ELEVATIONS.	24. NOT USED.	
7. CORRIDOR WALLS ARE WALL TYPE C2B, 2X6'S, UNLESS NOTED OTHERWISE.	16. SEE A820 FOR INTERIOR WINDOW FRAME ELEVATIONS.	25. SEE INTERIORS SHEETS FOR INTERIOR ELEVATIONS, FINISHES, SCHEDULES, AND DETAILS.	
8. UNIT PARTY WALLS TO BE WALL TYPE P1 UNLESS NOTED OTHERWISE.	17. NOT USED.	26. FURNITURE AND EQUIPMENT N.I.C.	
9. SEE A860 FOR FIRE BLOCKING @ PARTY WALL. SEE A860 FOR UNIT/CORRIDOR FIRE BLOCKING.	18. F.E. @ CORRIDORS SEE A860 FOR FIRE EXTINGUISHER DETAILS. LOCATE F.E. PER FLOOR PLANS. CABINETS MUST BE RATED WHEN PENETRATING RATED WALL ASSEMBLIES.	27. WHEN NOT OTHERWISE SHOWN IN AN ELEVATION VIEW, SEE ENLARGED FLOOR PLANS FOR TAGS DENOTING CABINETS AT KITCHEN ISLANDS.	

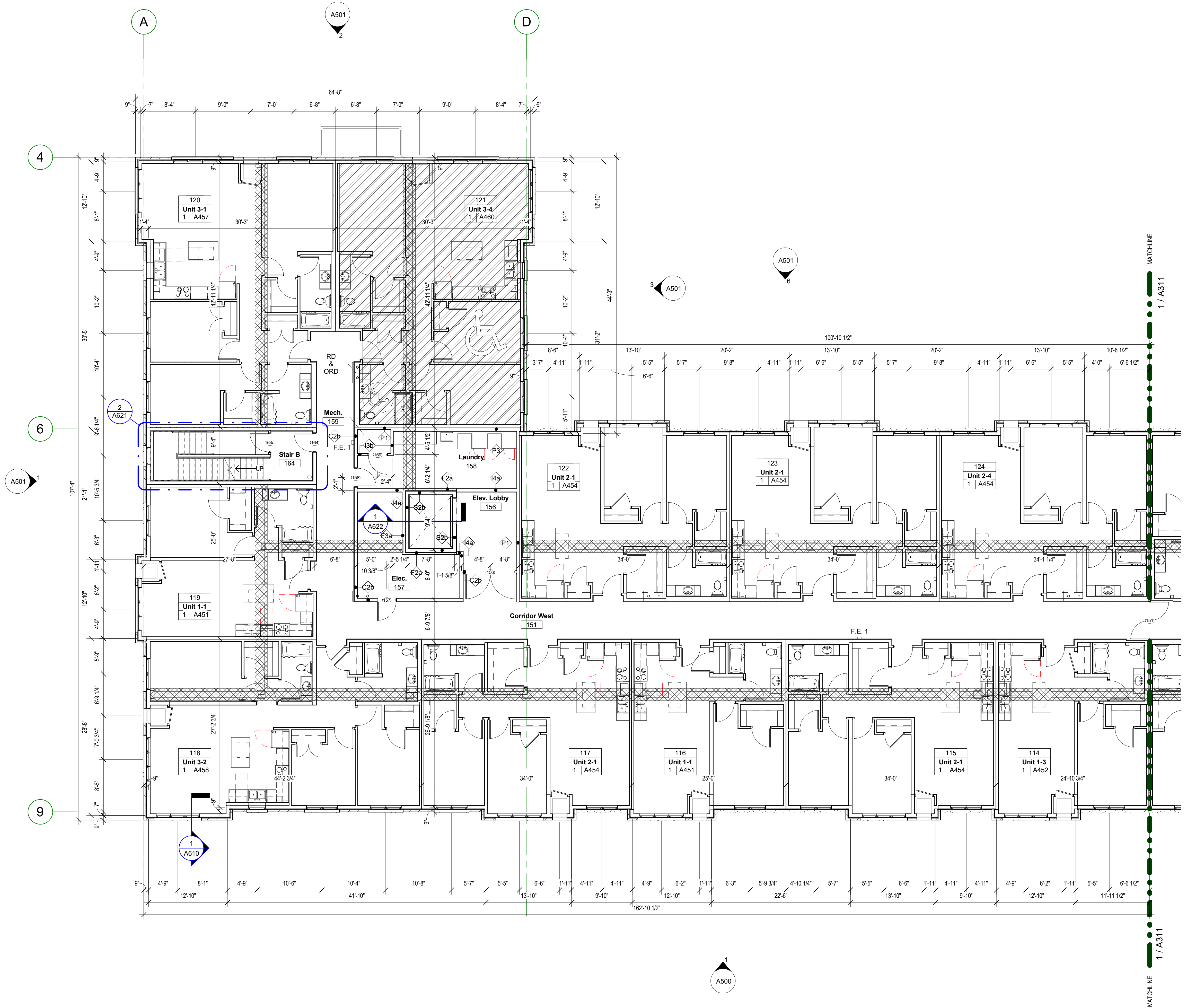


kaas wilson architects
 1301 American Blvd E.
 Suite 100
 Bloomington, MN 55425
 tel: (612) 879-6000
 fax: (612) 879-6666
 www.kaaswilson.com

Civil Engineer:
 Loucks
 7200 Hemlock Lane
 Suite 300
 Maple Grove, MN 55369

Structural Engineer:
 Sandman Structural
 Engineers
 10125 Crosstown Circle
 #380
 Eden Prairie, MN 55344

MEP Engineer:
 Cain Thomas Associates Inc
 4215 White Bear Pkwy
 #100
 St Paul, MN 55110



1 Level 1-West
 1/8" = 1'-0"

Project:
Rise on 7
 8115 MN-7
 St Louis Park, MN 55426

Owner:
CB SLP LP
 1080 Montreal Ave
 St Paul, MN 55116

Project Number: 20003
 Date: 06-02-2021

NOT FOR CONSTRUCTION

Date	Revision	Rev. No.

Level 1 West Plan
 As indicated
A310

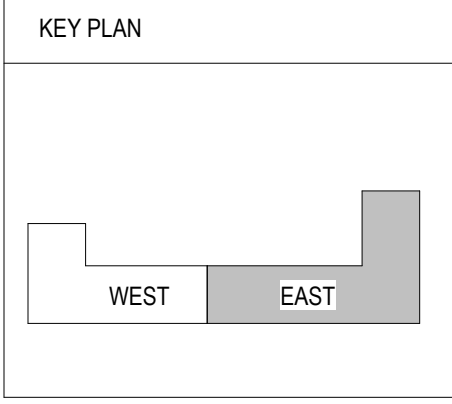
FLOOR PLAN GENERAL NOTES

1. ALL DIMENSIONS AT EXTERIOR WALLS ARE TAKEN TO EXTERIOR FACE OF MASONRY AT CMU WALLS OR CENTER OF STUD AT FRAMED WALLS UNLESS NOTED OTHERWISE.

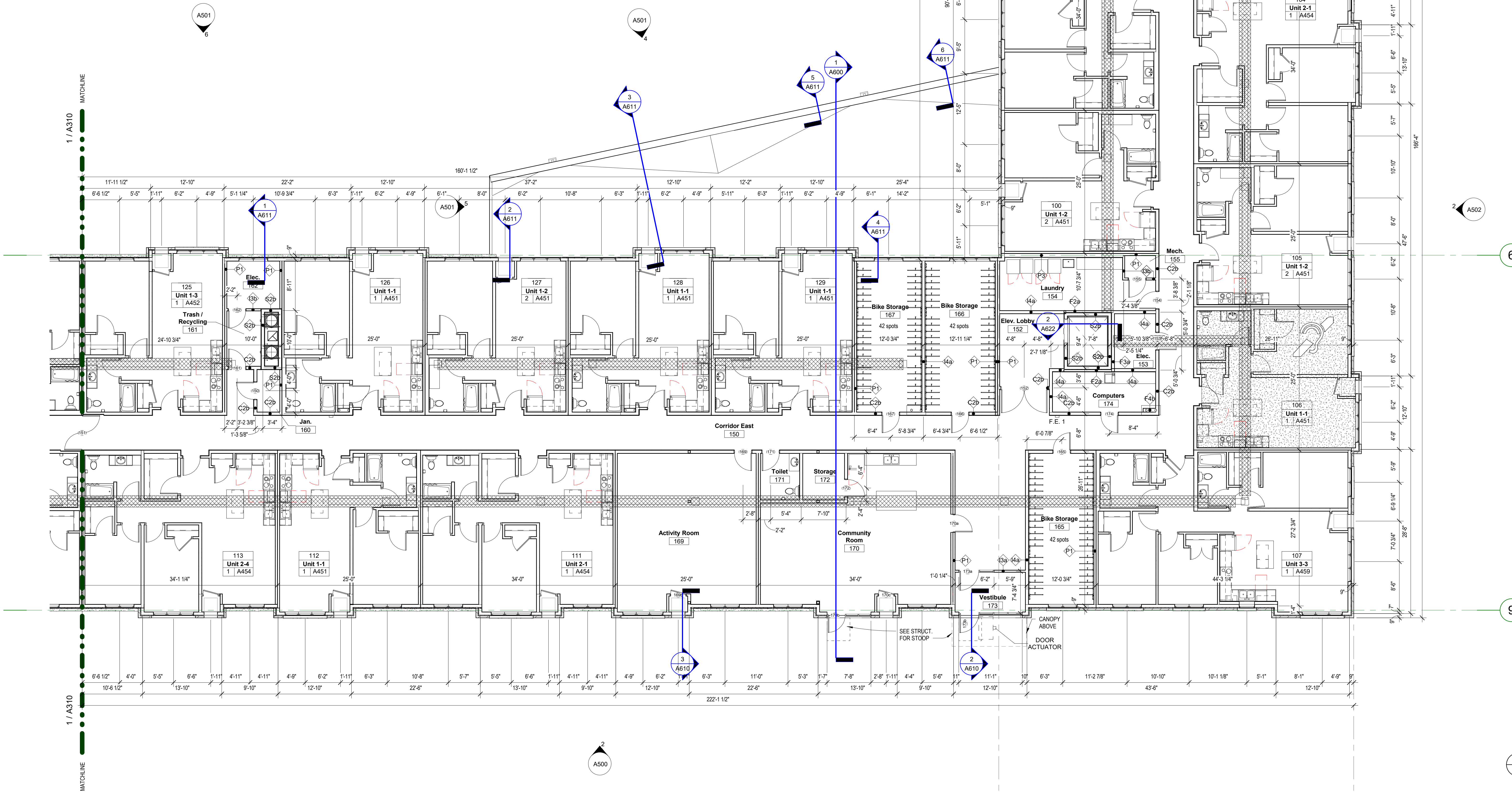
10. SEE A860 FOR GYP. BOARD CONTROL JOINTS.

19. NOT USED.

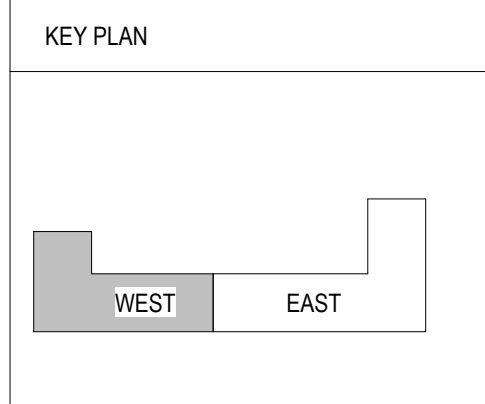
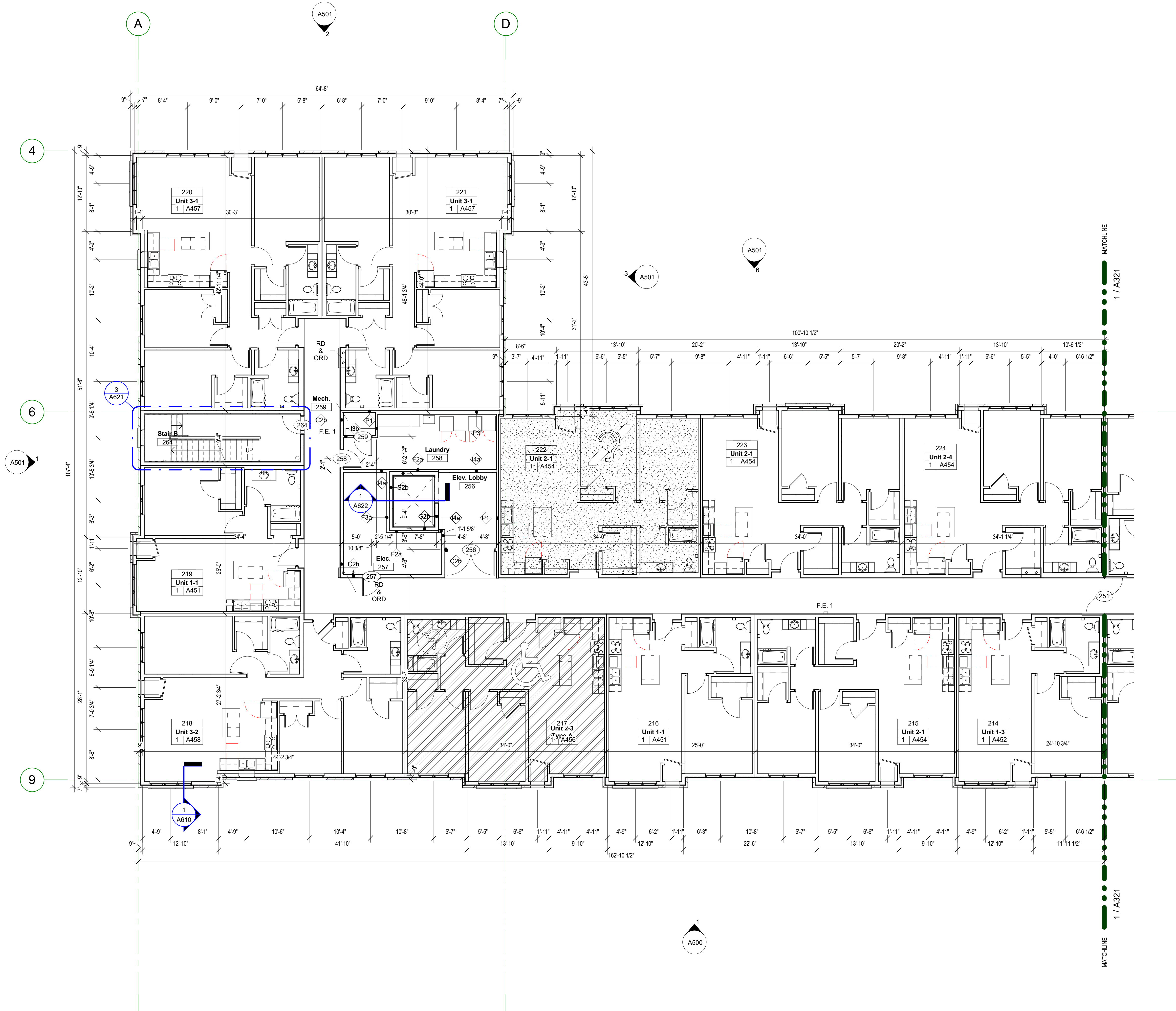
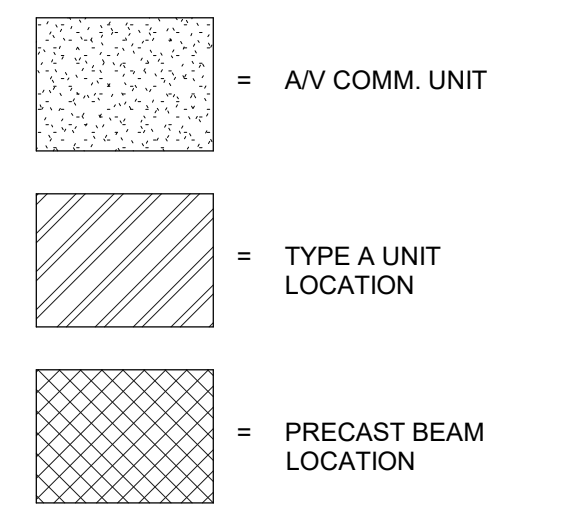
28. PROVIDE RATED ACCESS PANELS AT HOT WATER RECIRC LINE. IF LOCATED IN RATED ASSEMBLY - SEE MECH.



Legend for unit and beam locations: A/V COMM. UNIT, TYPE A UNIT LOCATION, PRECAST BEAM LOCATION.



FLOOR PLAN GENERAL NOTES		
1. ALL DIMENSIONS AT EXTERIOR WALLS ARE TAKEN TO EXTERIOR FACE OF MASONRY AT CMU WALLS OR CENTER OF STUD AT FRAMED WALLS UNLESS NOTED OTHERWISE.	10. SEE A860 FOR GYP. BOARD CONTROL JOINTS.	19. NOT USED.
2. ALL DIMENSIONS AT INTERIOR WALLS ARE TAKEN TO THE CENTER OF STUD. DIMENSIONS OF FURRING WALLS ARE TO FACE OF WALL.	11. ELECTRICAL APPURTENANCES TO BE MOUNTED FROM 15" - 48" AFF PER MN ACCESSIBILITY CODE SECTION 308. SEE A303.	20. RECESSED FIXTURES IN WOOD FRAME STRUCTURE. SEE A860.
3. UNLESS NOTED OTHERWISE, INTERIOR WALLS WITHOUT DESIGNATION ARE TYPE 13a.	12. ALL WINDOWS WITHIN 30" OF DOOR SWING SHALL BE TEMPERED.	21. SHAFT WALL INTERSECTIONS WITH STANDARD WALLS. SEE A860.
4. 'FS' AT INTERIOR DIMENSIONS DENOTES DIMENSIONS TO FACE OF STUD WALL, 'CS' TO CENTER OF STUD WALL AND 'FW' DENOTES FACE OF WALL.	13. PROVIDE CABINET PULLS @ ALL KITCHENS AND BATHS.	22. AT ALL BEARING STUDS WITH PIPE PENETRATIONS, STRAP PLATES AS REQUIRED TO MAINTAIN STRUCTURAL INTEGRITY OF WALL.
5. SEE SHEETS A010 & A011 FOR EXTERIOR AND INTERIOR WALL TYPES.	14. SEE SHEET A860 FOR FIRESTOPPING OF HVAC PENETRATIONS OF FLOOR/CEILING & WALL ASSEMBLIES.	23. SEE A840 FOR ROOF ACCESS DETAILS.
6. SEE SHEET A011 FOR FLOOR-CEILING & ROOF-CEILING ASSEMBLIES.	15. SEE A500 - A501 FOR EXTERIOR ELEVATIONS.	24. NOT USED.
7. CORRIDOR WALLS ARE WALL TYPE C2B, 2X6'S, UNLESS NOTED OTHERWISE.	16. SEE A820 FOR INTERIOR WINDOW FRAME ELEVATIONS.	25. SEE INTERIORS SHEETS FOR INTERIOR ELEVATIONS, FINISHES, SCHEDULES, AND DETAILS.
8. UNIT PARTY WALLS TO BE WALL TYPE P1, UNLESS NOTED OTHERWISE.	17. NOT USED.	26. FURNITURE AND EQUIPMENT N.I.C.
9. SEE A880 FOR FIRE BLOCKING @ PARTY WALL. SEE A860 FOR UNIT/ CORRIDOR FIRE BLOCKING.	18. F.E. @ CORRIDORS SEE A860 FOR FIRE EXTINGUISHER DETAILS. LOCATE F.E. PER FLOOR PLANS. CABINETS MUST BE RATED WHEN PENETRATING RATED WALL ASSEMBLIES.	27. WHEN NOT OTHERWISE SHOWN IN AN ELEVATION VIEW, SEE ENLARGED FLOOR PLANS FOR TAGS DENOTING CABINETS AT KITCHEN ISLANDS.
		28. ALL STEEL BEAMS AND COLUMNS SHALL BE FIREPROOFED W/ INTUMESCENT PAINT PER TABLE 601 OF THE 2020 MN BUILDING CODE.
		29. CORRIDOR CEILINGS ARE TO BE COVERED WITH GYPSUM SHEATHING PER FLOOR ASSEMBLY. CEILINGS DROPPED FOR MECH. AT CORRIDORS ARE NOTED ON OVERALL BUILDING PLANS. KEEP DROPPED CEILINGS AS TIGHT/HIGH AS POSSIBLE.



1 Level 2-West
1/8" = 1'-0"

kaas wilson architects
1301 American Blvd E.
Suite 100
Bloomington, MN 55425
tel: (612) 879-6000
fax: (612) 879-6666
www.kaaswilson.com

Civil Engineer:
Loucks
7200 Hemlock Lane
Suite 300
Maple Grove, MN 55369

Structural Engineer:
Sandman Structural
Engineers
10125 Crosstown Circle
#380
Eden Prairie, MN 55344

MEP Engineer:
Cain Thomas Associates Inc
4215 White Bear Pkwy
#100
St Paul, MN 55110

Project:
Rise on 7
8115 MN-7
St Louis Park, MN 55426

Owner:
CB SLP LP
1080 Montreal Ave
St Paul, MN 55116

Project Number: 20003
Date: 06-02-2021

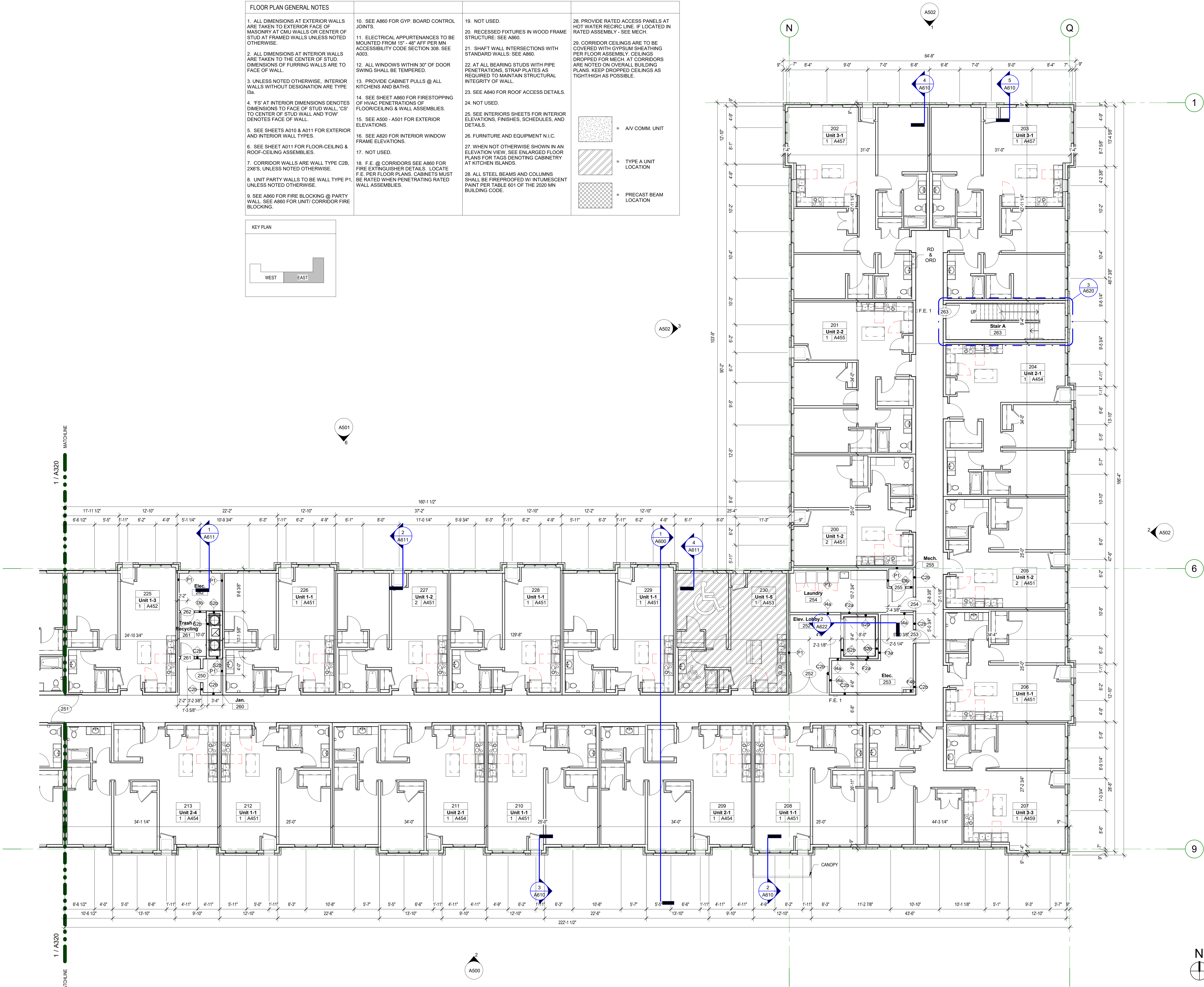
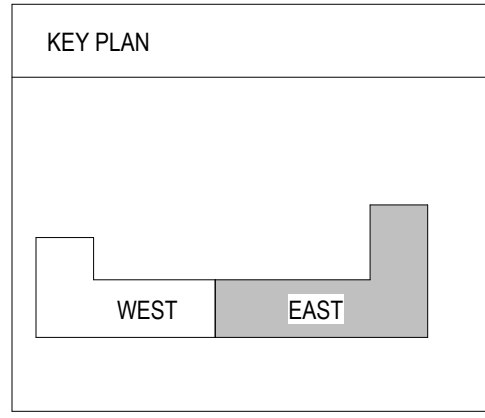
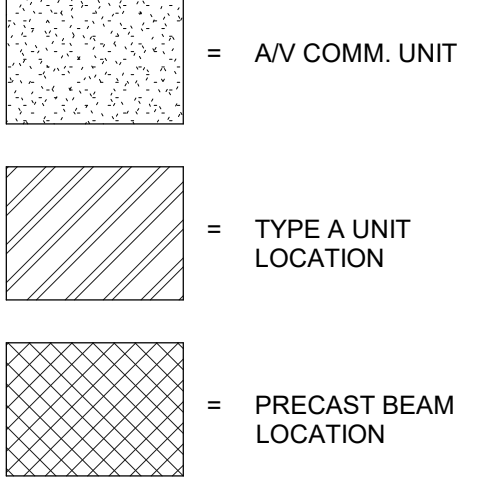
NOT FOR CONSTRUCTION

Date	Revision	Rev. No.

Level 2 West
Plan
As indicated
A320

FLOOR PLAN GENERAL NOTES

- | | | | |
|---|---|---|--|
| <p>1. ALL DIMENSIONS AT EXTERIOR WALLS ARE TAKEN TO EXTERIOR FACE OF MASONRY AT CMU WALLS OR CENTER OF STUD AT FRAMED WALLS UNLESS NOTED OTHERWISE.</p> <p>2. ALL DIMENSIONS AT INTERIOR WALLS ARE TAKEN TO THE CENTER OF STUD. DIMENSIONS OF FURRING WALLS ARE TO FACE OF WALL.</p> <p>3. UNLESS NOTED OTHERWISE, INTERIOR WALLS WITHOUT DESIGNATION ARE TYPE I3a.</p> <p>4. "FS" AT INTERIOR DIMENSIONS DENOTES DIMENSIONS TO FACE OF STUD WALL, "CS" TO CENTER OF STUD WALL AND "FOW" DENOTES FACE OF WALL.</p> <p>5. SEE SHEETS A010 & A011 FOR EXTERIOR AND INTERIOR WALL TYPES.</p> <p>6. SEE SHEET A011 FOR FLOOR-CEILING & ROOF-CEILING ASSEMBLIES.</p> <p>7. CORRIDOR WALLS ARE WALL TYPE C2B, 2X6'S, UNLESS NOTED OTHERWISE.</p> <p>8. UNIT PARTY WALLS TO BE WALL TYPE P1, UNLESS NOTED OTHERWISE.</p> <p>9. SEE A860 FOR FIRE BLOCKING @ PARTY WALL. SEE A860 FOR UNIT/ CORRIDOR FIRE BLOCKING.</p> | <p>10. SEE A860 FOR GYP. BOARD CONTROL JOINTS.</p> <p>11. ELECTRICAL APPURTENANCES TO BE MOUNTED FROM 15" - 48" AFF PER MN ACCESSIBILITY CODE SECTION 306. SEE A003.</p> <p>12. ALL WINDOWS WITHIN 30" OF DOOR SWING SHALL BE TEMPERED.</p> <p>13. PROVIDE CABINET PULLS @ ALL KITCHENS AND BATHS.</p> <p>14. SEE SHEET A860 FOR FIRESTOPPING OF HVAC PENETRATIONS OF FLOOR/CEILING & WALL ASSEMBLIES.</p> <p>15. SEE A500 - A501 FOR EXTERIOR ELEVATIONS.</p> <p>16. SEE A820 FOR INTERIOR WINDOW FRAME ELEVATIONS.</p> <p>17. NOT USED.</p> <p>18. F.E. @ CORRIDORS SEE A860 FOR FIRE EXTINGUISHER DETAILS. LOCATE F.E. PER FLOOR PLANS. CABINETS MUST BE RATED WHEN PENETRATING RATED WALL ASSEMBLIES.</p> | <p>19. NOT USED.</p> <p>20. RECESSED FIXTURES IN WOOD FRAME STRUCTURE. SEE A860.</p> <p>21. SHAFT WALL INTERSECTIONS WITH STANDARD WALLS. SEE A860.</p> <p>22. AT ALL BEARING STUDS WITH PIPE PENETRATIONS, STRAP PLATES AS REQUIRED TO MAINTAIN STRUCTURAL INTEGRITY OF WALL.</p> <p>23. SEE A840 FOR ROOF ACCESS DETAILS.</p> <p>24. NOT USED.</p> <p>25. SEE INTERIORS SHEETS FOR INTERIOR ELEVATIONS, FINISHES, SCHEDULES, AND DETAILS.</p> <p>26. FURNITURE AND EQUIPMENT N.I.C.</p> <p>27. WHEN NOT OTHERWISE SHOWN IN AN ELEVATION VIEW, SEE ENLARGED FLOOR PLANS FOR TAGS DENOTING CABINETRY AT KITCHEN ISLANDS.</p> <p>28. ALL STEEL BEAMS AND COLUMNS SHALL BE FIREPROOFED W/ INTUMESCENT PAINT PER TABLE 601 OF THE 2020 MN BUILDING CODE.</p> | <p>29. CORRIDOR CEILINGS ARE TO BE COVERED WITH GYPSUM SHEATHING PER FLOOR ASSEMBLY. CEILINGS DROPPED FOR MECH. AT CORRIDORS ARE NOTED ON OVERALL BUILDING PLANS. KEEP DROPPED CEILINGS AS TIGHT/HIGH AS POSSIBLE.</p> |
|---|---|---|--|



1301 American Blvd E.
Suite 100
Bloomington, MN 55425
tel: (612) 879-6000
fax: (612) 879-6666
www.kaaswilson.com

Civil Engineer:
Loucks
7200 Hemlock Lane
Suite 300
Maple Grove, MN 55369

Structural Engineer:
Sandman Structural
Engineers
10125 Crosstown Circle
#380
Eden Prairie, MN 55344

MEP Engineer:
Cain Thomas Associates Inc
4215 White Bear Pkwy
#100
St Paul, MN 55110

Project:
Rise on 7
8115 HWY N 7
St Louis Park, MN 55426

Owner:
CB SLP LP
1080 Montreal Ave
St Paul, MN 55116

Project Number: 20003
Date: 06-02-2021

NOT FOR CONSTRUCTION

Date:

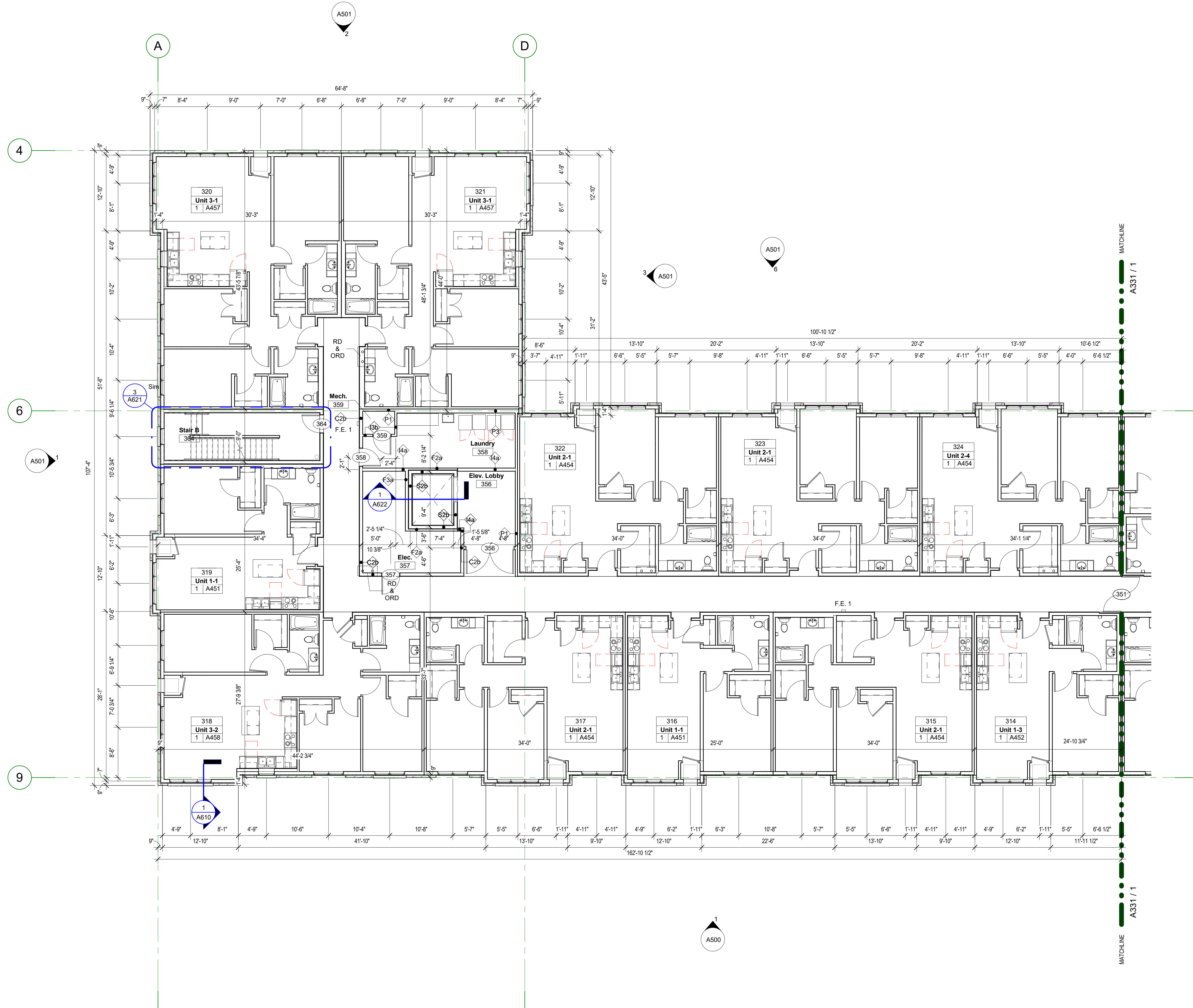
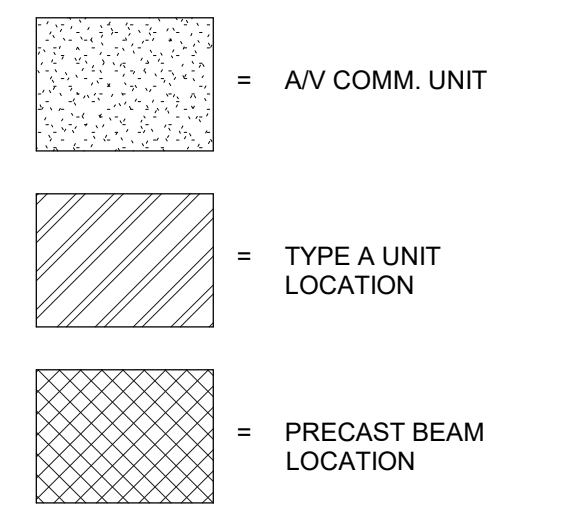
Revision:

Rev. No.:

Level 2 East
Plan
As indicated

A321

FLOOR PLAN GENERAL NOTES			
1. ALL DIMENSIONS AT EXTERIOR WALLS ARE TAKEN TO EXTERIOR FACE OF MASONRY AT CMU WALLS OR CENTER OF STUD AT FRAMED WALLS UNLESS NOTED OTHERWISE.	10. SEE A860 FOR GYP. BOARD CONTROL JOINTS.	19. NOT USED.	28. PROVIDE RATED ACCESS PANELS AT HOT WATER RECIRC. LINE. IF LOCATED IN RATED ASSEMBLY - SEE MECH.
2. ALL DIMENSIONS AT INTERIOR WALLS ARE TAKEN TO THE CENTER OF STUD. DIMENSIONS OF FURRING WALLS ARE TO FACE OF WALL.	11. ELECTRICAL APPURTENANCES TO BE MOUNTED FROM 15" - 48" AFF PER MN ACCESSIBILITY CODE SECTION 308. SEE A303.	20. RECESSED FIXTURES IN WOOD FRAME STRUCTURE. SEE A860.	29. CORRIDOR CEILINGS ARE TO BE COVERED WITH GYPSUM SHEATHING PER FLOOR ASSEMBLY. CEILINGS DROPPED FOR MECH. AT CORRIDORS ARE NOTED ON OVERALL BUILDING PLANS. KEEP DROPPED CEILINGS AS TIGHT/HIGH AS POSSIBLE.
3. UNLESS NOTED OTHERWISE, INTERIOR WALLS WITHOUT DESIGNATION ARE TYPE I3a.	12. ALL WINDOWS WITHIN 30" OF DOOR SWING SHALL BE TEMPERED.	21. SHAFT WALL INTERSECTIONS WITH STANDARD WALLS. SEE A860.	
4. 'FS' AT INTERIOR DIMENSIONS DENOTES DIMENSIONS TO FACE OF STUD WALL, 'CS' TO CENTER OF STUD WALL AND 'FW' DENOTES FACE OF WALL.	13. PROVIDE CABINET PULLS @ ALL KITCHENS AND BATHS.	22. AT ALL BEARING STUDS WITH PIPE PENETRATIONS, STRAP PLATES AS REQUIRED TO MAINTAIN STRUCTURAL INTEGRITY OF WALL.	
5. SEE SHEETS A010 & A011 FOR EXTERIOR AND INTERIOR WALL TYPES.	14. SEE SHEET A860 FOR FIRESTOPPING OF HVAC PENETRATIONS OF FLOOR/CEILING & WALL ASSEMBLIES.	23. SEE A840 FOR ROOF ACCESS DETAILS.	
6. SEE SHEET A011 FOR FLOOR-CEILING & ROOF-CEILING ASSEMBLIES.	15. SEE A500 - A501 FOR EXTERIOR ELEVATIONS.	24. NOT USED.	
7. CORRIDOR WALLS ARE WALL TYPE C2b. 2X6'S, UNLESS NOTED OTHERWISE.	16. SEE A820 FOR INTERIOR WINDOW FRAME ELEVATIONS.	25. SEE INTERIORS SHEETS FOR INTERIOR ELEVATIONS, FINISHES, SCHEDULES, AND DETAILS.	
8. UNIT PARTY WALLS TO BE WALL TYPE P1 UNLESS NOTED OTHERWISE.	17. NOT USED.	26. FURNITURE AND EQUIPMENT N.I.C.	
9. SEE A880 FOR FIRE BLOCKING @ PARTY WALL. SEE A860 FOR UNIT/ CORRIDOR FIRE BLOCKING.	18. F.E. @ CORRIDORS SEE A860 FOR FIRE EXTINGUISHER DETAILS. LOCATE F.E. PER FLOOR PLANS. CABINETS MUST BE RATED WHEN PENETRATING RATED WALL ASSEMBLIES.	27. WHEN NOT OTHERWISE SHOWN IN AN ELEVATION VIEW, SEE ENLARGED FLOOR PLANS FOR TAGS DENOTING CABINETS AT KITCHEN ISLANDS.	



1 Level 3-West
1/8" = 1'-0"

kaas wilson architects
1301 American Blvd E.
Suite 100
Bloomington, MN 55425
tel: (612) 879-6000
fax: (612) 879-6666
www.kaaswilson.com

Civil Engineer:
Loucks
7200 Hemlock Lane
Suite 300
Maple Grove, MN 55369

Structural Engineer:
Sandman Structural
Engineers
10125 Crosstown Circle
#380
Eden Prairie, MN 55344

MEP Engineer:
Cain Thomas Associates Inc
4215 White Bear Pkwy
#100
St Paul, MN 55110

Project:
Rise on 7
8115 MN-7
St Louis Park, MN 55426

Owner:
CB SLP LP
1080 Montreal Ave
St Paul, MN 55116

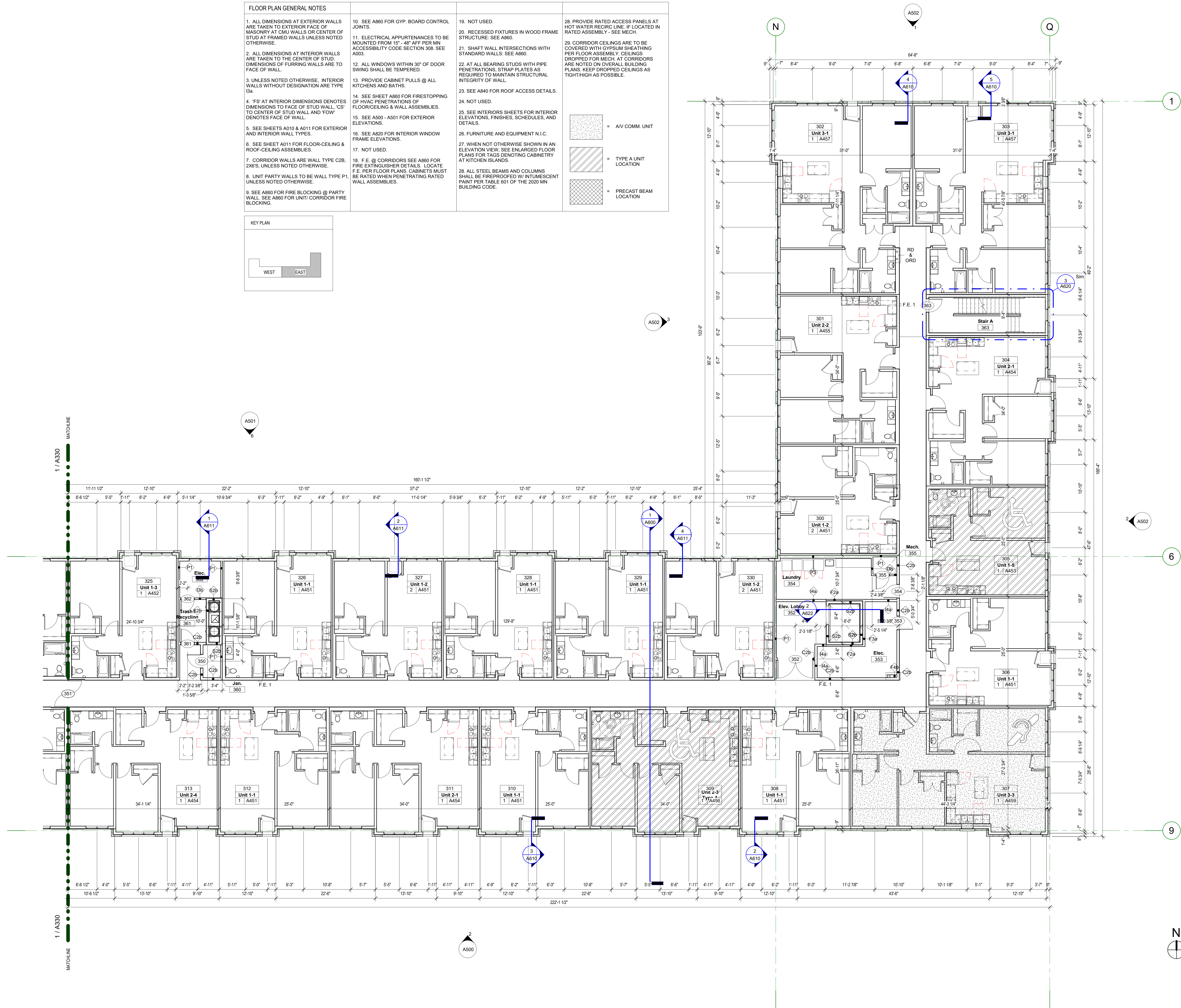
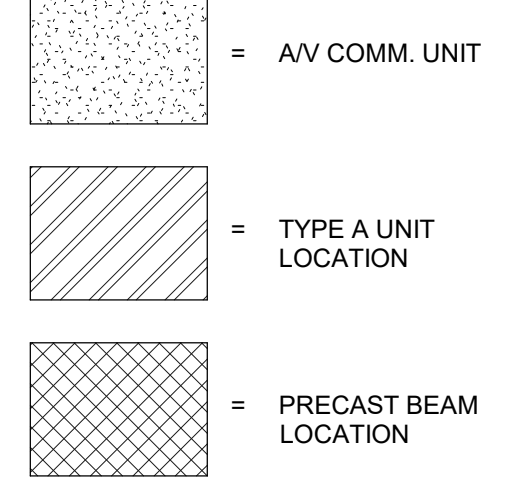
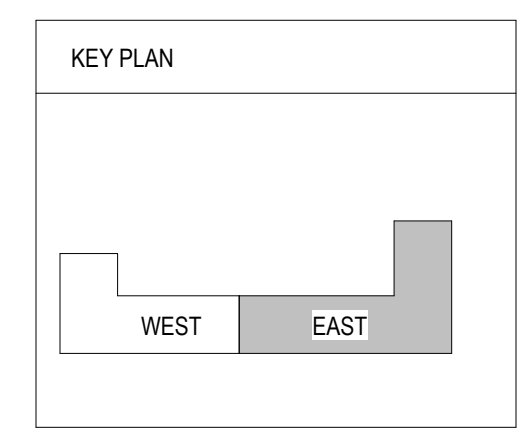
Project Number 20003
Date 06-02-2021

NOT FOR CONSTRUCTION

Date	Revision	Rev. No.

Level 3 West
Plan
As indicated
A330

FLOOR PLAN GENERAL NOTES			
1. ALL DIMENSIONS AT EXTERIOR WALLS ARE TAKEN TO EXTERIOR FACE OF MASONRY AT CMU WALLS OR CENTER OF STUD AT FRAMED WALLS UNLESS NOTED OTHERWISE.	10. SEE A860 FOR GYP. BOARD CONTROL JOINTS.	19. NOT USED.	28. PROVIDE RATED ACCESS PANELS AT HOT WATER RECIRC LINE. IF LOCATED IN RATED ASSEMBLY - SEE MECH.
2. ALL DIMENSIONS AT INTERIOR WALLS ARE TAKEN TO THE CENTER OF STUD. DIMENSIONS OF FURRING WALLS ARE TO FACE OF WALL.	11. ELECTRICAL APPURTENANCES TO BE MOUNTED FROM 15" - 48" AFF PER MN ACCESSIBILITY CODE SECTION 306. SEE A003.	20. RECESSED FIXTURES IN WOOD FRAME STRUCTURE. SEE A860.	29. CORRIDOR CEILINGS ARE TO BE COVERED WITH GYPSUM SHEATHING PER FLOOR ASSEMBLY. CEILINGS DROPPED FOR MECH. AT CORRIDORS ARE NOTED ON OVERALL BUILDING PLANS. KEEP DROPPED CEILINGS AS TIGHT/HIGH AS POSSIBLE.
3. UNLESS NOTED OTHERWISE, INTERIOR WALLS WITHOUT DESIGNATION ARE TYPE I3a.	12. ALL WINDOWS WITHIN 30" OF DOOR SWING SHALL BE TEMPERED.	21. SHAFT WALL INTERSECTIONS WITH STANDARD WALLS. SEE A860.	
4. "FS" AT INTERIOR DIMENSIONS DENOTES DIMENSIONS TO FACE OF STUD WALL. "CS" TO CENTER OF STUD WALL AND "FOW" DENOTES FACE OF WALL.	13. PROVIDE CABINET PULLS @ ALL KITCHENS AND BATHS.	22. AT ALL BEARING STUDS WITH PIPE PENETRATIONS, STRAP PLATES AS REQUIRED TO MAINTAIN STRUCTURAL INTEGRITY OF WALL.	
5. SEE SHEETS A010 & A011 FOR EXTERIOR AND INTERIOR WALL TYPES.	14. SEE SHEET A860 FOR FIRESTOPPING OF FLOOR/CILING & WALL ASSEMBLIES.	23. SEE A840 FOR ROOF ACCESS DETAILS.	
6. SEE SHEET A011 FOR FLOOR-CEILING & ROOF-CEILING ASSEMBLIES.	15. SEE A500 - A501 FOR EXTERIOR ELEVATIONS.	24. NOT USED.	
7. CORRIDOR WALLS ARE WALL TYPE C28, 2X6'S, UNLESS NOTED OTHERWISE.	16. SEE A820 FOR INTERIOR WINDOW FRAME ELEVATIONS.	25. SEE INTERIORS SHEETS FOR INTERIOR ELEVATIONS, FINISHES, SCHEDULES, AND DETAILS.	
8. UNIT PARTY WALLS TO BE WALL TYPE P1, UNLESS NOTED OTHERWISE.	17. NOT USED.	26. FURNITURE AND EQUIPMENT N.I.C.	
9. SEE A860 FOR FIRE BLOCKING @ PARTY WALL. SEE A860 FOR UNIT/ CORRIDOR FIRE BLOCKING.	18. F.E. @ CORRIDORS SEE A860 FOR FIRE EXTINGUISHER DETAILS. LOCATE F.E. PER FLOOR PLANS. CABINETS MUST BE RATED WHEN PENETRATING RATED WALL ASSEMBLIES.	27. WHEN NOT OTHERWISE SHOWN IN AN ELEVATION VIEW, SEE ENLARGED FLOOR PLANS FOR TAGS DENOTING CABINETRY AT KITCHEN ISLANDS.	
		28. ALL STEEL BEAMS AND COLUMNS SHALL BE FIREPROOFED W/ INTUMESCENT PAINT PER TABLE 601 OF THE 2020 MN BUILDING CODE.	



1301 American Blvd E.
Suite 100
Bloomington, MN 55425
tel: (612) 879-6000
fax: (612) 879-6666
www.kaaswilson.com

Civil Engineer:
Lockus
7200 Hemlock Lane
Suite 300
Maple Grove, MN 55369

Structural Engineer:
Sandman Structural Engineers
10125 Crosstown Circle
#380
Eden Prairie, MN 55444

MEP Engineer:
Cain Thomas Associates Inc
4215 White Bear Pkwy
#100
St Paul, MN 55110

Project:
Rise on 7
8115 HWY N 7
St Louis Park, MN 55426

Owner:
CB SLP LP
1080 Montreal Ave
St Paul, MN 55116

Project Number: 20003
Date: 06-02-2021

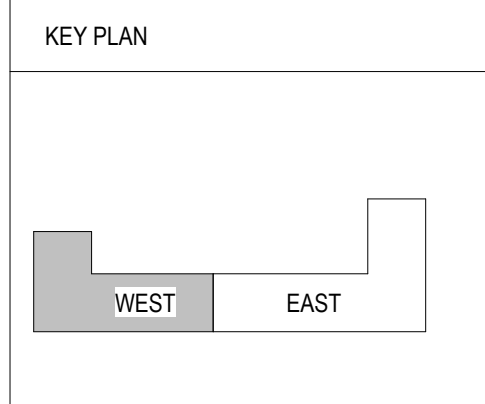
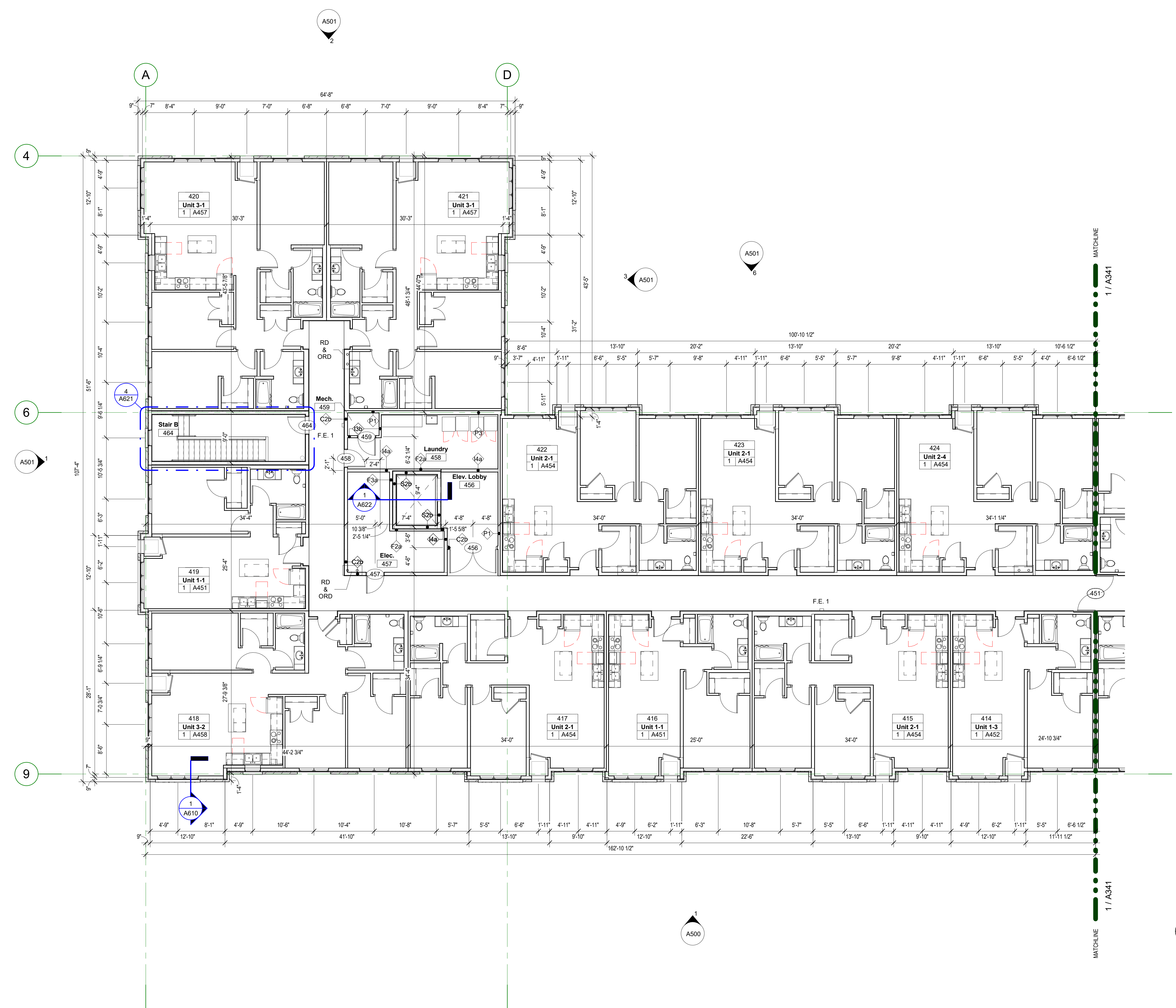
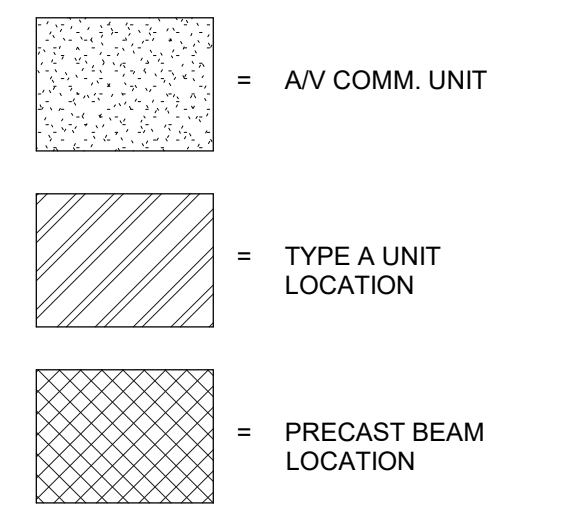
NOT FOR CONSTRUCTION

Rev. No.	Date	Revision

Level 3 East Plan
As indicated
A331

1 Level 3-East
1/8" = 1'-0"

FLOOR PLAN GENERAL NOTES			
1. ALL DIMENSIONS AT EXTERIOR WALLS ARE TAKEN TO EXTERIOR FACE OF MASONRY AT CMU WALLS OR CENTER OF STUD AT FRAMED WALLS UNLESS NOTED OTHERWISE.	10. SEE A860 FOR GYP. BOARD CONTROL JOINTS.	19. NOT USED.	28. PROVIDE RATED ACCESS PANELS AT HOT WATER RECIRC. LINE. IF LOCATED IN RATED ASSEMBLY - SEE MECH.
2. ALL DIMENSIONS AT INTERIOR WALLS ARE TAKEN TO THE CENTER OF STUD. DIMENSIONS OF FURRING WALLS ARE TO FACE OF WALL.	11. ELECTRICAL APPURTENANCES TO BE MOUNTED FROM 15" - 48" AFF PER MN ACCESSIBILITY CODE SECTION 308. SEE A303.	20. RECESSED FIXTURES IN WOOD FRAME STRUCTURE. SEE A860.	29. CORRIDOR CEILINGS ARE TO BE COVERED WITH GYPSUM SHEATHING PER FLOOR ASSEMBLY. CEILINGS DROPPED FOR MECH. AT CORRIDORS ARE NOTED ON OVERALL BUILDING PLANS. KEEP DROPPED CEILINGS AS TIGHT/HIGH AS POSSIBLE.
3. UNLESS NOTED OTHERWISE, INTERIOR WALLS WITHOUT DESIGNATION ARE TYPE 13a.	12. ALL WINDOWS WITHIN 30" OF DOOR SWING SHALL BE TEMPERED.	21. SHAFT WALL INTERSECTIONS WITH STANDARD WALLS. SEE A860.	
4. 'FS' AT INTERIOR DIMENSIONS DENOTES DIMENSIONS TO FACE OF STUD WALL. 'CS' TO CENTER OF STUD WALL AND 'FW' DENOTES FACE OF WALL.	13. PROVIDE CABINET PULLS @ ALL KITCHENS AND BATHS.	22. AT ALL BEARING STUDS WITH PIPE PENETRATIONS, STRAP PLATES AS REQUIRED TO MAINTAIN STRUCTURAL INTEGRITY OF WALL.	
5. SEE SHEETS A010 & A011 FOR EXTERIOR AND INTERIOR WALL TYPES.	14. SEE SHEET A860 FOR FIRESTOPPING OF HVAC PENETRATIONS OF FLOOR/CEILING & WALL ASSEMBLIES.	23. SEE A840 FOR ROOF ACCESS DETAILS.	
6. SEE SHEET A011 FOR FLOOR-CEILING & ROOF-CEILING ASSEMBLIES.	15. SEE A500 - A501 FOR EXTERIOR ELEVATIONS.	24. NOT USED.	
7. CORRIDOR WALLS ARE WALL TYPE C2B. 2X6'S, UNLESS NOTED OTHERWISE.	16. SEE A820 FOR INTERIOR WINDOW FRAME ELEVATIONS.	25. SEE INTERIORS SHEETS FOR INTERIOR ELEVATIONS, FINISHES, SCHEDULES, AND DETAILS.	
8. UNIT PARTY WALLS TO BE WALL TYPE P1, UNLESS NOTED OTHERWISE.	17. NOT USED.	26. FURNITURE AND EQUIPMENT N.I.C.	
9. SEE A880 FOR FIRE BLOCKING @ PARTY WALL. SEE A860 FOR UNIT/ CORRIDOR FIRE BLOCKING.	18. F.E. @ CORRIDORS SEE A860 FOR FIRE EXTINGUISHER DETAILS. LOCATE F.E. PER FLOOR PLANS. CABINETS MUST BE RATED WHEN PENETRATING RATED WALL ASSEMBLIES.	27. WHEN NOT OTHERWISE SHOWN IN AN ELEVATION VIEW, SEE ENLARGED FLOOR PLANS FOR TAGS DENOTING CABINETS AT KITCHEN ISLANDS.	



1 Level 4-West
1/8" = 1'-0"

kaas wilson architects
1301 American Blvd E.
Suite 100
Bloomington, MN 55425
tel: (612) 879-6000
fax: (612) 879-6666
www.kaaswilson.com

Civil Engineer:
Loucks
7200 Hemlock Lane
Suite 300
Maple Grove, MN 55369

Structural Engineer:
Sandman Structural
Engineers
10125 Crosstown Circle
#380
Eden Prairie, MN 55344

MEP Engineer:
Cain Thomas Associates Inc
4215 White Bear Pkwy
#100
St Paul, MN 55110

Project:
Rise on 7
8115 MN-7
St Louis Park, MN 55426

Owner:
CB SLP LP
1080 Montreal Ave
St Paul, MN 55116

Project Number: 20003
Date: 06-02-2021

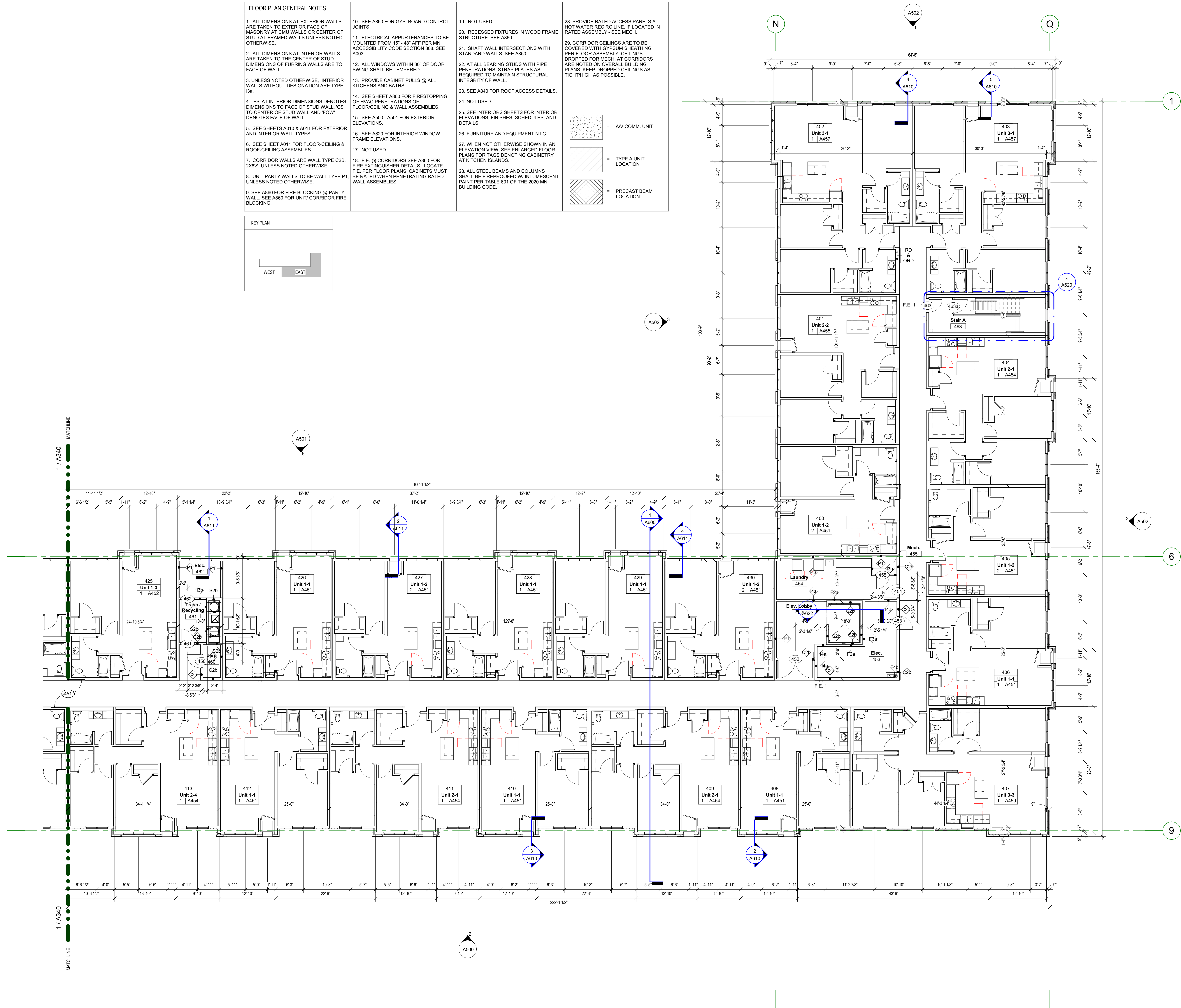
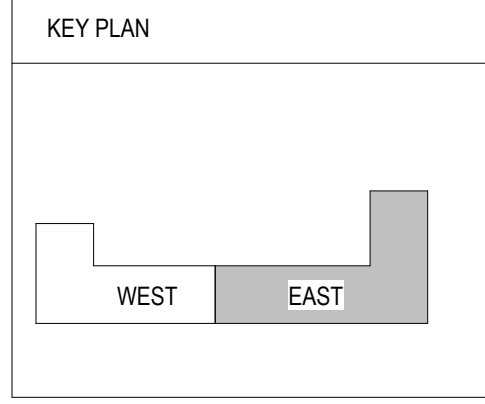
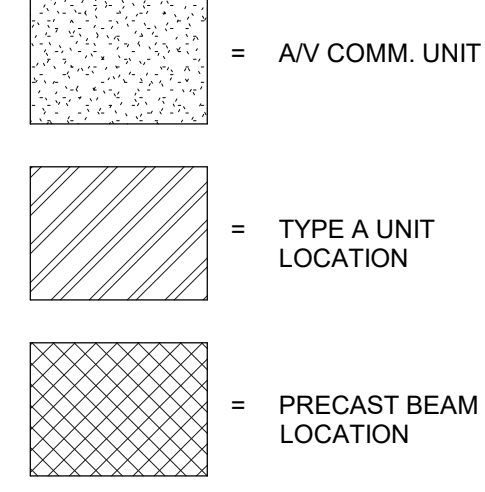
NOT FOR CONSTRUCTION

Date	Revision	Rev. No.

Level 4 West
Plan
As indicated
A340

FLOOR PLAN GENERAL NOTES

- ALL DIMENSIONS AT EXTERIOR WALLS ARE TAKEN TO EXTERIOR FACE OF MASONRY AT CMU WALLS OR CENTER OF STUD AT FRAMED WALLS UNLESS NOTED OTHERWISE.
- ALL DIMENSIONS AT INTERIOR WALLS ARE TAKEN TO THE CENTER OF STUD. DIMENSIONS OF FURRING WALLS ARE TO FACE OF WALL.
- UNLESS NOTED OTHERWISE, INTERIOR WALLS WITHOUT DESIGNATION ARE TYPE I3a.
- "FS" AT INTERIOR DIMENSIONS DENOTES DIMENSIONS TO FACE OF STUD WALL, "CS" TO CENTER OF STUD WALL AND "FOW" DENOTES FACE OF WALL.
- SEE SHEETS A010 & A011 FOR EXTERIOR AND INTERIOR WALL TYPES.
- SEE SHEET A011 FOR FLOOR-CEILING & ROOF-CEILING ASSEMBLIES.
- CORRIDOR WALLS ARE WALL TYPE C2B, 2X6'S, UNLESS NOTED OTHERWISE.
- UNIT PARTY WALLS TO BE WALL TYPE P1, UNLESS NOTED OTHERWISE.
- SEE A860 FOR FIRE BLOCKING @ PARTY WALL. SEE A860 FOR UNIT/ CORRIDOR FIRE BLOCKING.
- SEE A860 FOR GYP. BOARD CONTROL JOINTS.
- ELECTRICAL APPURTENANCES TO BE MOUNTED FROM 15" - 48" AFF PER MN ACCESSIBILITY CODE SECTION 306. SEE A003.
- ALL WINDOWS WITHIN 30" OF DOOR SWING SHALL BE TEMPERED.
- PROVIDE CABINET PULLS @ ALL KITCHENS AND BATHS.
- SEE SHEET A860 FOR FIRESTOPPING OF FLOOR/CEILING & WALL ASSEMBLIES.
- SEE A500 - A501 FOR EXTERIOR ELEVATIONS.
- SEE A820 FOR INTERIOR WINDOW FRAME ELEVATIONS.
- NOT USED.
- F.E. @ CORRIDORS SEE A860 FOR FIRE EXTINGUISHER DETAILS. LOCATE F.E. PER FLOOR PLANS. CABINETS MUST BE RATED WHEN PENETRATING RATED WALL ASSEMBLIES.
- NOT USED.
- RECESSED FIXTURES IN WOOD FRAME STRUCTURE: SEE A860.
- SHAFT WALL INTERSECTIONS WITH STANDARD WALLS: SEE A860.
- AT ALL BEARING STUDS WITH PIPE PENETRATIONS, STRAP PLATES AS REQUIRED TO MAINTAIN STRUCTURAL INTEGRITY OF WALL.
- SEE A840 FOR ROOF ACCESS DETAILS.
- NOT USED.
- SEE INTERIORS SHEETS FOR INTERIOR ELEVATIONS, FINISHES, SCHEDULES, AND DETAILS.
- FURNITURE AND EQUIPMENT N.I.C.
- WHEN NOT OTHERWISE SHOWN IN AN ELEVATION VIEW, SEE ENLARGED FLOOR PLANS FOR TAGS DENOTING CABINETRY AT KITCHEN ISLANDS.
- ALL STEEL BEAMS AND COLUMNS SHALL BE FIREPROOFED W/ INTUMESCENT PAINT PER TABLE 601 OF THE 2020 MN BUILDING CODE.
- PROVIDE RATED ACCESS PANELS AT HOT WATER RECIRC LINE. IF LOCATED IN RATED ASSEMBLY - SEE MECH.
- CORRIDOR CEILINGS ARE TO BE COVERED WITH GYPSUM SHEATHING PER FLOOR ASSEMBLY. CEILINGS DROPPED FOR MECH. AT CORRIDORS ARE NOTED ON OVERALL BUILDING PLANS. KEEP DROPPED CEILINGS AS TIGHT/HIGH AS POSSIBLE.



KAAS WILSON ARCHITECTS
 1301 American Blvd E.
 Suite 100
 Bloomington, MN 55425
 tel: (612) 879-6000
 fax: (612) 879-6666
 www.kaaswilson.com

Civil Engineer:
 Loucks
 7200 Hemlock Lane
 Suite 300
 Maple Grove, MN 55369

Structural Engineer:
 Sandman Structural
 Engineers
 10125 Crosstown Circle
 #380
 Eden Prairie, MN 55444

MEP Engineer:
 Cain Thomas Associates Inc
 4215 White Bear Pkwy
 #100
 St Paul, MN 55110

Project:
 Rise on 7
 8115 HWY N 7
 St Louis Park, MN 55426

Owner:
 CB SLP LP
 1080 Montreal Ave
 St Paul, MN 55116

Project Number: 20003
Date: 06-02-2021

NOT FOR CONSTRUCTION

Rev. No.	Date	Revision

Level 4-East Plan
 As indicated
A341

ROOF PLAN NOTES

1. SEE A011 FOR TYPICAL ROOF/CEILING CONSTRUCTION.
2. SEE A840 & A841 FOR ALL ROOF PENETRATION AND PARAPET DETAILS.
3. FOR RATED MECHANICAL SHAFT PENETRATIONS: SEE A840.
4. PROVIDE ROOF ACCESS HATCHES AS SHOWN ON PLANS - SEE SHEET A350, A351 A620, A621 & A840
5. PROVIDE 30 X30 WALKWAY PADS TO ALL SERVICEABLE EQUIPMENT COMPATIBLE W/ ROOF MFR'S SYSTEM. CONFIRM LAYOUT OF WALKWAY PADS W/ OWNER.
6. FLASH ALL VENT THROUGH ROOF PIPES PER A840

KEY PLAN

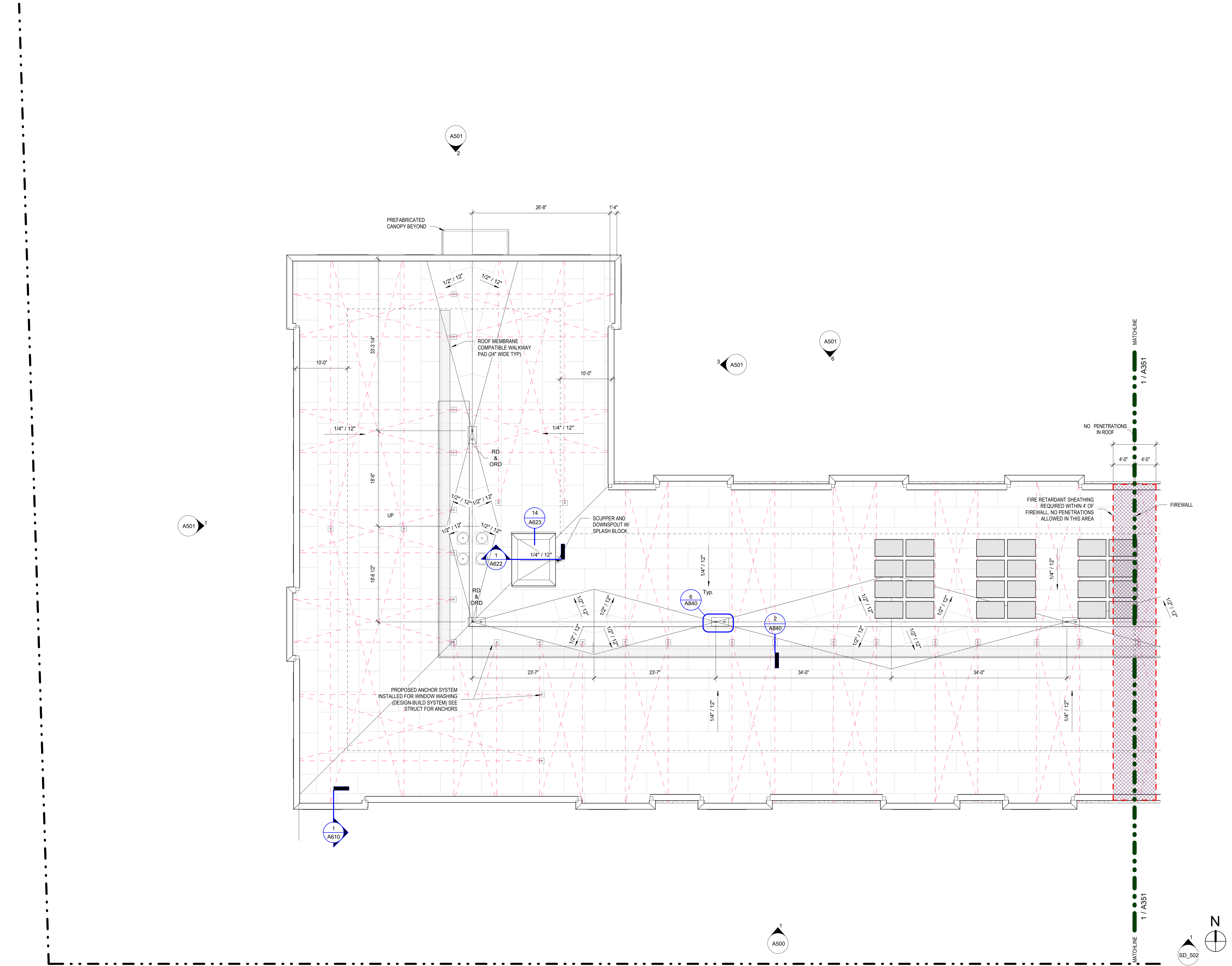
kaas wilson architects

1301 American Blvd E.
Suite 100
Bloomington, MN 55425
tel: (612) 879-6000
fax: (612) 879-6666
www.kaaswilson.com

Civil Engineer:
Loucks
7200 Hemlock Lane
Suite 300
Maple Grove, MN 55369

Structural Engineer:
Sandman Structural
Engineers
10125 Crosstown Circle
#380
Eden Prairie, MN 55344

MEP Engineer:
Cain Thomas Associates Inc
4215 White Bear Pkwy
#100
St Paul, MN 55110



1 Roof Plan-West
1/8" = 1'-0"

Project:
Rise on 7
8115 HWY N 7
St Louis Park, MN 55426

Owner:
CB SLP LP
1080 Montreal Ave
St Paul, MN 55116

Project Number: 20003
Date: 06-02-2021

NOT FOR CONSTRUCTION

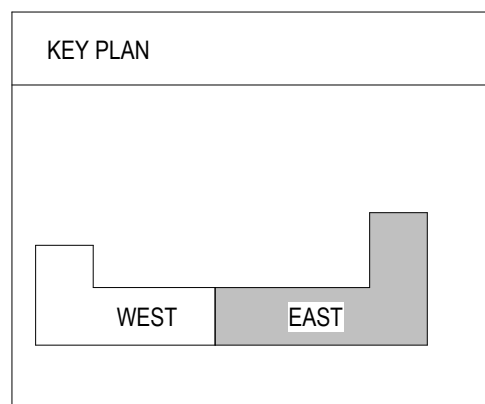
Rev. No.	Date	Revision

Roof Plan West

As indicated

A350

ROOF PLAN NOTES	
1.	SEE A011 FOR TYPICAL ROOF/CEILING CONSTRUCTION.
2.	SEE A840 & A841 FOR ALL ROOF PENETRATION AND PARAPET DETAILS.
3.	FOR RATED MECHANICAL SHAFT PENETRATIONS: SEE A840.
4.	PROVIDE ROOF ACCESS HATCHES AS SHOWN ON PLANS - SEE SHEET A350, A351 A620, A621 & A840
5.	PROVIDE 30 X30 WALKWAY PADS TO ALL SERVICEABLE EQUIPMENT COMPATIBLE W/ ROOF MFRS SYSTEM. CONFIRM LAYOUT OF WALKWAY PADS W/ OWNER.
6.	FLASH ALL VENT THROUGH ROOF PIPES PER A840



Project:
Rise on 7
8115 HWY N 7
St Louis Park, MN 55426

Owner:
CB SLP LP
1080 Montreal Ave
St Paul, MN 55116

Project Number: 20003
Date: 06-02-2021

NOT FOR CONSTRUCTION

Date

Revision

Rev. No.

Roof Plan East

As indicated
A351

