

I hereby certify that this plan, specification, or report was prepared by me or under my direct supervision and that I am a duly licensed architect under the laws of the State of Minnesota.

Signature \_\_\_\_\_

Typed or Printed Name \_\_\_\_\_

License # Date \_\_\_\_\_

**NOT FOR  
CONSTRUCTION**

PUD Submittal  
07/23/2021

ORIGINAL ISSUE:  
07/23/21

REVISIONS:  
No. Description Date

221538  
PROJECT NUMBER

Author \_\_\_\_\_ Checker \_\_\_\_\_  
DRAWN BY \_\_\_\_\_ CHECKED BY \_\_\_\_\_

KEY PLAN

3510 BELTLINE  
BOULEVARD  
CONCEPT EXTERIOR  
ELEVATIONS

**A0.08**

**PUD MATERIAL KEY**

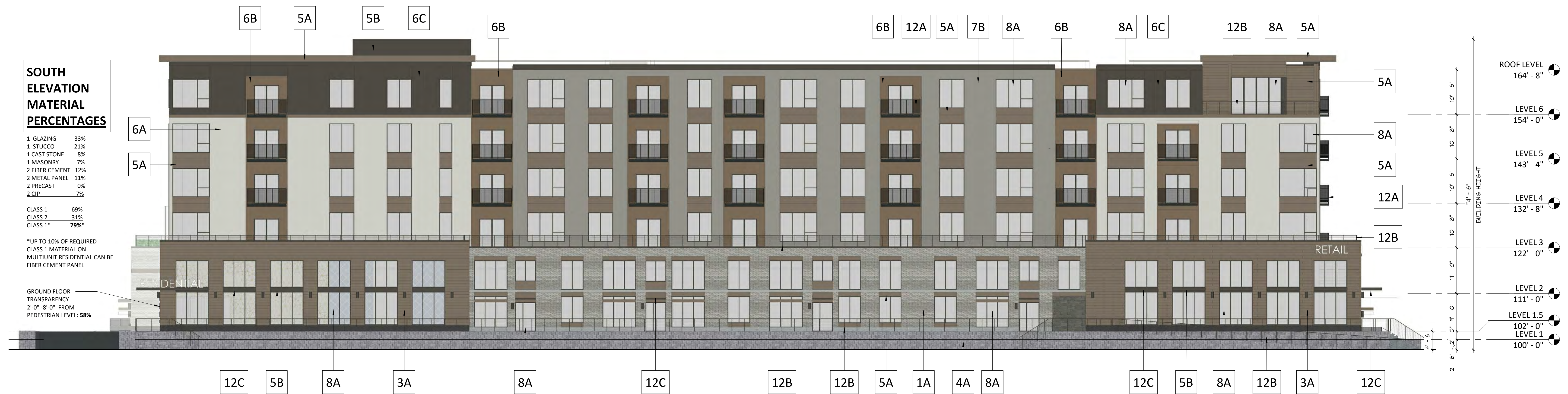
- 1A - BRICK VENEER - GREY/BUFF BLEND
- 3A - CAST STONE - BRONZE
- 3B - PRECAST PANEL
- 3C - PRECAST PANEL
- 4A - CAST IN PLACE CONCRETE- TEXTURED
- 5A - METAL PANEL- LIGHT BRONZE
- 5B- METAL PANEL- DARK BRONZE
- 6A- FIBER CEMENT PANEL- COFFEE
- 6B- FIBER CEMENT - LIGHT BRONZE
- 6C- FIBER CEMENT - DARK BRONZE
- 7A- STUCCO - CREAM
- 7B- STUCCO - WARM GREY
- 8A- WINDOW/DOOR SYSTEM - BRONZE
- 10A- PREFINISHED METAL FLASHING- BRONZE
- 12A- PREFINISHED ALUMINUM BALCONY  
W/ WIRE MESH INFILL PANEL
- 12B- PREFINISHED GUARDRAIL  
W/ CABLE OR WIRE MESH INFILL
- 12C- METAL TRELLIS AWNING
- 13A- LOUVER- TO MATCH ADJACENT COLORS



**3 COURTYARD SOUTH ELEVATION**  
A0.08 1/8" = 1'-0"



**2 WEST ELEVATION**  
A0.08 3/32" = 1'-0"



**1 SOUTH ELEVATION**  
A0.08 3/32" = 1'-0"

**SOUTH ELEVATION MATERIAL PERCENTAGES**

1 GLAZING	33%
1 STUCCO	23%
1 CAST STONE	8%
1 MASONRY	7%
2 FIBER CEMENT	12%
2 METAL PANEL	13%
2 PRECAST	0%
2 CIP	7%
CLASS 1	69%
CLASS 2	21%
CLASS 1*	79%*

\*UP TO 10% OF REQUIRED CLASS 1 MATERIAL ON MULTIFAMILY RESIDENTIAL CAN BE FIBER CEMENT PANEL

GROUND FLOOR TRANSPARENCY  
2'-0" - 8'-0" FROM PEDESTRIAN LEVEL: 58%

I hereby certify that this plan, specification, or report was prepared by me or under my direct supervision and that I am a duly licensed architect under the laws of the State of Minnesota

Signature \_\_\_\_\_

Typed or Printed Name \_\_\_\_\_

License # \_\_\_\_\_ Date \_\_\_\_\_

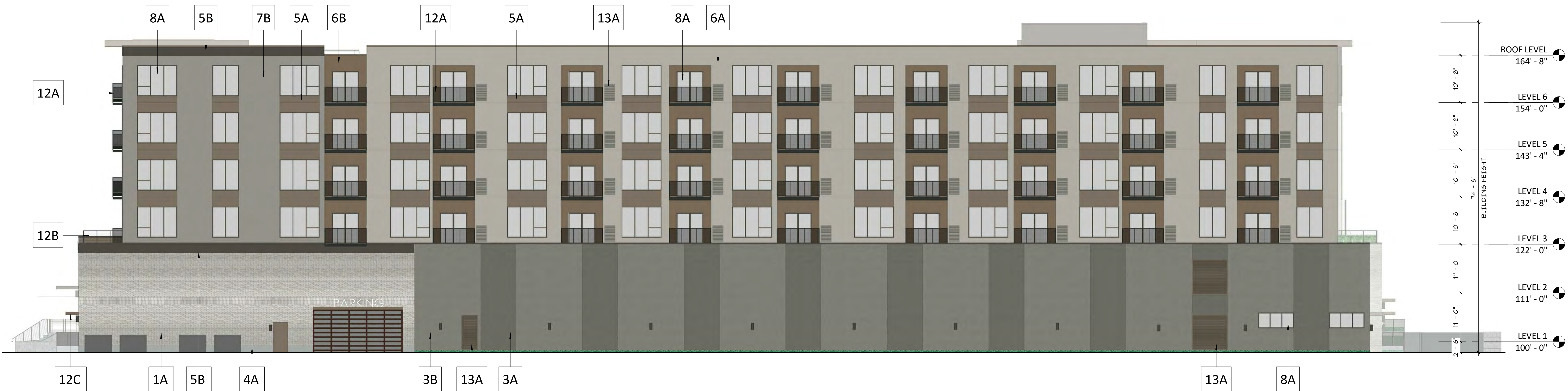
**NOT FOR  
CONSTRUCTION**

**PUD MATERIAL KEY**

- 1A - BRICK VENEER - GREY/BUFF BLEND
- 3A - CAST STONE - BRONZE
- 3B - PRECAST PANEL
- 3C - PRECAST PANEL
- 4A - CAST IN PLACE CONCRETE- TEXTURED
- 5A - METAL PANEL- LIGHT BRONZE
- 5B - METAL PANEL- DARK BRONZE
- 6A - FIBER CEMENT PANEL- COFFEE
- 6B - FIBER CEMENT - LIGHT BRONZE
- 6C - FIBER CEMENT - DARK BRONZE
- 7A - STUCCO - CREAM
- 7B - STUCCO - WARM GREY
- 8A - WINDOW/DOOR SYSTEM - BRONZE
- 10A - PREFINISHED METAL FLASHING- BRONZE
- 12A - PREFINISHED ALUMINUM BALCONY W/ WIRE MESH INFILL PANEL
- 12B - PREFINISHED GUARDRAIL W/ CABLE OR WIRE MESH INFILL
- 12C - METAL TRELLIS AWNING
- 13A - LOUVER- TO MATCH ADJACENT COLORS



**3 COURTYARD NORTH ELEVATION**  
A0.09 1/8" = 1'-0"



**2 NORTH ELEVATION**  
A0.09 3/32" = 1'-0"



**1 EAST ELEVATION**  
A0.09 3/32" = 1'-0"

**EAST ELEVATION MATERIAL PERCENTAGES**

1 GLAZING	32%
1 STUCCO	10%
1 CAST STONE	5%
1 MASONRY	10%
2 FIBER CEMENT	23%
2 METAL PANEL	15%
2 PRECAST	2%
2 CIP	4%
CLASS 1	57%
CLASS 2	43%
CLASS 1*	67%

\*UP TO 10% OF REQUIRED CLASS 1 MATERIAL ON MULTITENANT RESIDENTIAL CAN BE FIBER CEMENT PANEL

PUD Submittal  
07/23/2021

ORIGINAL ISSUE:  
07/23/21  
REVISIONS:  
No. Description Date

221538  
PROJECT NUMBER  
Author \_\_\_\_\_ Checker \_\_\_\_\_  
DRAWN BY \_\_\_\_\_ CHECKED BY \_\_\_\_\_  
KEY PLAN

3510 BELTLINE  
BOULEVARD  
CONCEPT EXTERIOR  
ELEVATIONS

**A0.09**