

NOT FOR CONSTRUCTION

PUD APPLICATION
-
SEP 07 2021

ORIGINAL ISSUE:
08/24/21

REVISIONS:
No. Description Date

221533
PROJECT NUMBER

ESG
DRAWN BY

ESG
CHECKED BY

KEY PLAN

9920 Wayzata Blvd

ELEVATIONS
A3-0

EXTERIOR MATERIAL KEYNOTES

1A	BRICK VENEER - COLOR #1
2A	STONE, SMOOTH FINISH
4A	CMU VENEER, BURNISHED COLOR #1
4B	CMU VENEER, BURNISHED COLOR #2
5A	METAL PANEL - COLOR #1
6A	FIBER CEMENT BOARD - DARK GRAY
6B	FIBER CEMENT BOARD - LIGHT GRAY
7A	TEXTURED CEMENT STUCCO - DARK GRAY
7B	TEXTURED CEMENT STUCCO - LIGHT GRAY
8A	WINDOW & SLIDING DOOR UNITS
8B	ALUMINUM STOREFRONT, CLEAR ANODIZED FINISH
8D	HOLLOW METAL DOOR
8E	VEHICLE DOOR
11A	THRU-WALL MECH UNIT
12A	PREFABRICATED METAL BALCONY W/ GLASS OR MESH GUARDRAIL
12B	PREFINISHED ALUMINUM SITE RAIL W/ GLASS GUARDRAIL
12C	METAL TRELLIS AWNING



6 WEST ELEVATION - COURTYARD - COLOR
A3-0 3/64" = 1'-0"

MATERIAL CALCULATIONS

	COURTYARD WEST	COURTYARD EAST
BRICK VENEER - COLOR #1 (1A)	8%	14%
TEXTURED CEMENT STUCCO - DARK GREY (7A)	0%	0%
TEXTURED CEMENT STUCCO - LIGHT GREY (7B)	0%	0%
GLAZING (8A,8B)	40%	37%
METAL PANEL - COLOR #1 (5A)	52%	49%
STONE, SMOOTH FINISH (2A)	0%	0%
THRU-WALL MECH UNIT/HOLLOW METAL DOOR (11A,8D,8E)	0%	0%
FIBER CEMENT BOARD - DARK GRAY (6A)	0%	0%
FIBER CEMENT BOARD - LIGHT GRAY (6B)	0%	0%
CMU VENEER - BURNISHED COLOR #1 (4B)	0%	0%
CMU VENEER - BURNISHED COLOR #2 (4A)	0%	0%
TOTAL	100%	100%
CLASS I	48%	51%



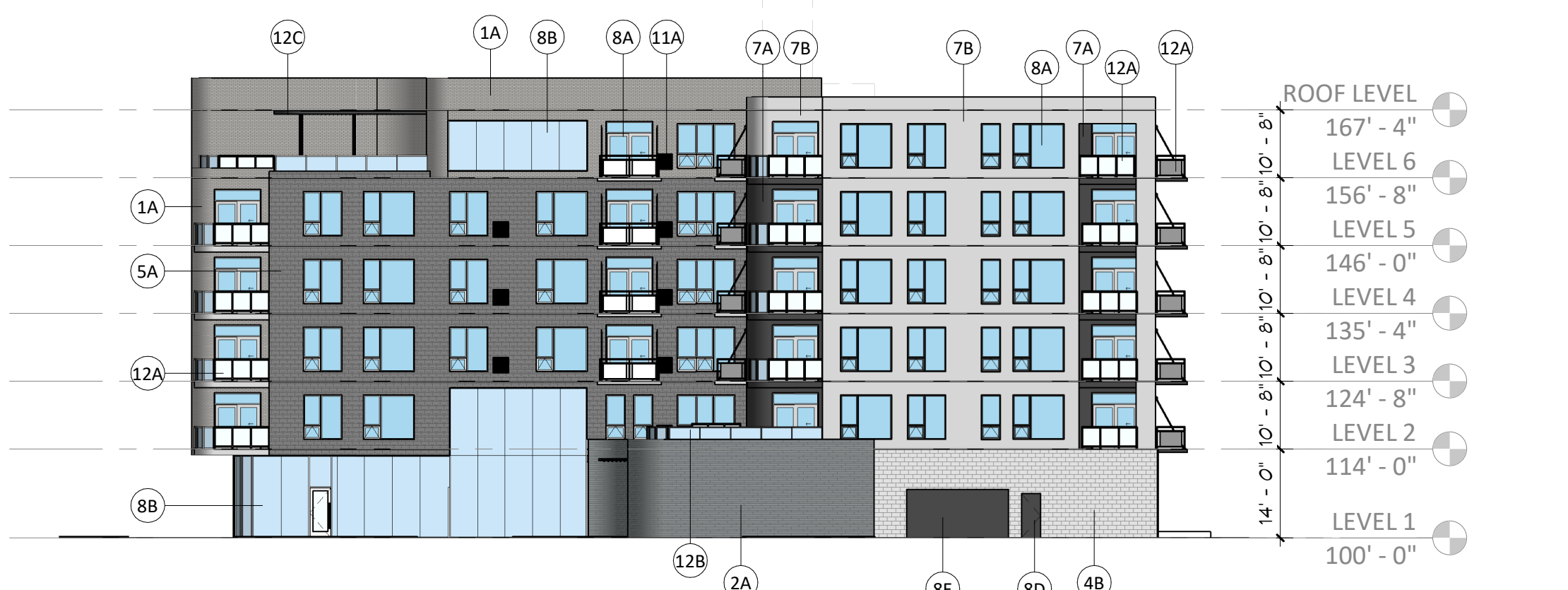
5 EAST ELEVATION - COURTYARD - COLOR
A3-0 3/64" = 1'-0"



4 WEST ELEVATION - COLOR
A3-0 3/64" = 1'-0"

MATERIAL CALCULATIONS

	NORTH	SOUTH	EAST	WEST
BRICK VENEER - COLOR #1 (1A)	0%	11%	13%	2%
TEXTURED CEMENT STUCCO - DARK GREY (7A)	0%	27%	3%	0%
TEXTURED CEMENT STUCCO - LIGHT GREY (7B)	0%	4%	15%	20%
GLAZING (8A,8B)	30%	43%	39%	37%
METAL PANEL - COLOR #1 (5A)	0%	3%	17%	29%
STONE, SMOOTH FINISH (2A)	0%	6%	0%	3%
THRU-WALL MECH UNIT/HOLLOW METAL DOOR (11A,8D,8E)	0%	1%	2%	0%
FIBER CEMENT BOARD - DARK GRAY (6A)	18%	0%	0%	0%
FIBER CEMENT BOARD - LIGHT GRAY (6B)	31%	5%	0%	0%
CMU VENEER - BURNISHED COLOR #1 (4B)	12%	0%	4%	0%
CMU VENEER - BURNISHED COLOR #2 (4A)	8%	0%	0%	9%
TOTAL	100%	100%	100%	100%
CLASS I	30%	91%	77%	62%



3 EAST ELEVATION - COLOR
A3-0 3/64" = 1'-0"



2 NORTH ELEVATION - COLOR
A3-0 3/64" = 1'-0"



1 SOUTH ELEVATION - COLOR
A3-0 3/64" = 1'-0"