

SITE AND LANDSCAPE NOTES

- CONTRACTOR SHALL CONTACT PUBLIC UTILITIES FOR LOCATION OF UNDERGROUND WIRES, CABLES, CONDUITS, PIPES, MANHOLES, VALVES OR OTHER BURIED STRUCTURES BEFORE DIGGING. LANDSCAPE CONTRACTOR SHALL REPAIR OR REPLACE THE ABOVE IF DAMAGED DURING CONSTRUCTION AT NO ADDITIONAL COST TO THE OWNER.
 - PROVIDE TEMPORARY COVERING FOR CATCH BASINS AND MAN HOLES UNTIL FINISHED GRADING IS COMPLETE.
 - PERIMETER SILT FENCE AND ROCK CONSTRUCTION ENTRANCES SHALL BE INSTALLED PRIOR TO CONSTRUCTION. REFER TO STATE SPECIFICATIONS FOR AGGREGATE BASE AND SILT FENCE.
 - WITHIN TWO WEEKS OF FINISHED SITE GRADING, DISTURBED AREAS SHALL BE STABILIZED WITH SEED, SOD, MULCH OR ROCK BASE.
 - CONTRACTOR SHALL MAINTAIN EROSION CONTROL MEASURES, INCLUDING THE REMOVAL OF ACCUMULATED SILT IN FRONT OF SILT FENCES AND EXCESS SEDIMENT IN PROPOSED CATCH BASINS, FOR THE DURATION OF CONSTRUCTION.
 - CONTRACTOR SHALL REMOVE EROSION CONTROL MEASURES AFTER VEGETATION IS ESTABLISHED AND DISPOSE OF OFF SITE.
- PLANTING**
- SPRING PLANT MATERIAL INSTALLATION IS FROM APRIL 15 TO JUNE 15.
 - FALL CONIFEROUS PLANTING IS ACCEPTABLE FROM AUGUST 21 TO SEPTEMBER 30.
 - FALL DECIDUOUS PLANTING IS ACCEPTABLE FROM AUGUST 15 UNTIL NOVEMBER 15.
 - ADJUSTMENTS TO PLANTING DATES MUST BE APPROVED IN WRITING BY THE LANDSCAPE ARCHITECT.
 - STAKE PROPOSED PLANTING LOCATIONS PER PLAN FOR REVIEW AND APPROVAL BY LANDSCAPE ARCHITECT PRIOR TO INSTALL.
 - PLANT MATERIAL SHALL COMPLY WITH THE CURRENT EDITION OF THE AMERICAN STANDARD FOR NURSERY STOCK, ANSI Z60.1.
 - INSTALL PLANT MATERIAL AFTER FINAL GRADING AND CONSTRUCTION HAS BEEN COMPLETED IN THE IMMEDIATE AREA.
 - SUBSTITUTION REQUESTS FOR PLANT MATERIAL TYPE & SIZE SHALL BE SUBMITTED TO THE LANDSCAPE ARCHITECT FOR CONSIDERATION PRIOR TO BIDDING. SUBSTITUTIONS AFTER BIDDING MUST BE APPROVED BY LANDSCAPE ARCHITECT AND ARE SUBJECT TO CONTRACT ADJUSTMENTS.
 - ADJUSTMENTS IN LOCATION OF PROPOSED PLANT MATERIALS MAY BE NEEDED IN FIELD. LANDSCAPE ARCHITECT MUST BE NOTIFIED PRIOR TO ADJUSTMENT OF PLANTS.
 - FERTILIZE PLANT MATERIAL UPON INSTALLATION WITH DRIED BONE MEAL AND OTHER APPROVED FERTILIZER MIXED IN WITH THE PLANTING SOIL (PER THE MANUFACTURER'S INSTRUCTIONS) OR TREAT FOR SUMMER AND FALL INSTALLATION WITH AN APPLICATION OF GRANULAR 10-0-5 OF 12 OZ. PER 2.5" CALIPER TREE AND 6 OZ. PER SHRUB WITH AN ADDITIONAL APPLICATION OF 10-0-10 THE FOLLOWING SPRING IN THE TREE SAUCER.
 - APPLY PRE-EMERGENT HERBICIDE (PREEN OR APPROVED EQUAL) IN ANNUAL, PERENNIAL, AND SHRUB BEDS FOLLOWED BY SHREDDED HARDWOOD MULCH. REFER TO SPECIFICATIONS FOR ADDITIONAL INFORMATION REGARDING USE OF HERBICIDES.

MULCHING

- INSTALL 4" DEEP SHREDDED HARDWOOD MULCH RINGS AT CONIFEROUS & DECIDUOUS TREES WITH NO MULCH IN DIRECT CONTACT WITH TREE TRUNK.

- INSTALL 3" DEEP SHREDDED HARDWOOD MULCH RINGS AT SHRUB PLANTING AREAS WITH NO MULCH IN DIRECT CONTACT WITH SHRUB STEMS.

- INSTALL 3" DEEP FINELY SHREDDED MULCH IN PERENNIAL PLANTING BEDS. REMOVE ALL MULCH FROM STEMS OF PERENNIALS - PLANT STEMS SHOULD NOT BE IN DIRECT CONTACT WITH MULCH.

WATERING

- PLANTED MATERIALS SHALL BE WATERED BY TEMPORARY MEANS UNTIL PLANTS ARE ESTABLISHED.
- TEMPORARY WATERING MEANS, METHODS, AND SCHEDULING SHALL BE THE CONTRACTOR'S RESPONSIBILITY. REMOVE TEMPORARY WATERING EQUIPMENT UPON PLANT ESTABLISHMENT.

WARRANTY

- WARRANTY NEW PLANT MATERIAL THROUGH ONE CALENDAR YEAR FROM THE DATE OF SUBSTANTIAL COMPLETION. NO PARTIAL ACCEPTANCE WILL BE CONSIDERED.

TURF NOTES

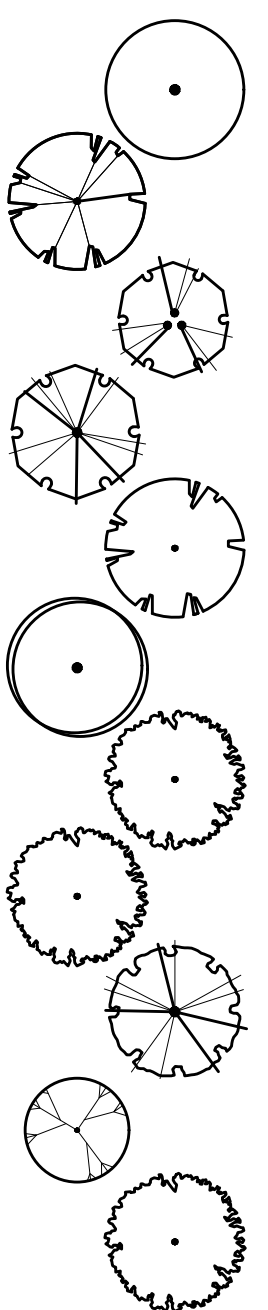
- SOD AREAS DISTURBED DUE TO GRADING UNLESS NOTED OTHERWISE.
- WHERE SOD ABUTS PAVED SURFACES, FINISHED GRADE OF SOD/SEED SHALL BE HELD 1" BELOW SURFACE ELEVATION OF TRAIL, SLAB, CURB, ETC.
- SOD SHALL BE LAID PARALLEL TO THE CONTOURS AND SHALL HAVE STAGGERED JOINTS. ON SLOPES STEEPER THAN 3:1 OR IN DRAINAGE SWALES, SOD SHALL BE STAKED SECURELY.
- UNLESS NOTED OTHERWISE, THE APPROPRIATE DATES FOR SPRING SEED & SOD PLACEMENT IS FROM THE TIME GROUND HAS THAWED TO JUNE 15.
- FALL SODDING IS ACCEPTABLE FROM AUGUST 15 TO NOVEMBER 1. FALL SEEDING IS ACCEPTABLE FROM AUGUST 15 TO SEPTEMBER 15. ADJUSTMENTS TO SOD/SEED PLANTING DATES MUST BE APPROVED IN WRITING BY THE LANDSCAPE ARCHITECT.

IRRIGATION NOTES

- CONTRACTOR SHALL BE RESPONSIBLE FOR PROVIDING AN IRRIGATION LAYOUT PLAN AND SPECIFICATION THAT MEETS THE REQUIREMENTS OF THE PROVIDED PERFORMANCE SPECIFICATION AS PART OF THE SCOPE OF WORK. SUBMIT LAYOUT PLAN AND SPECIFICATIONS FOR APPROVAL BY THE LANDSCAPE ARCHITECT PRIOR TO ORDER AND/OR CONSTRUCTION. IT SHALL BE THE CONTRACTOR'S RESPONSIBILITY TO ENSURE THAT SODDED/SEEDED AND PLANTED AREAS ARE IRRIGATED PROPERLY, INCLUDING THOSE AREAS DIRECTLY AROUND AND ABUTTING BUILDING FOUNDATION.
- CONTRACTOR SHALL FIELD VERIFY WATER SUPPLY, VOLUME, PRESSURE AND LOCATION FOR SYSTEM TAP PRIOR TO SYSTEM DESIGN.
- CONTRACTOR SHALL CONFIRM COMPLETE LIMITS OF IRRIGATION WITH LANDSCAPE ARCHITECT PRIOR TO SUPPLYING SHOP DRAWINGS.
- CONTRACTOR SHALL CONTACT LANDSCAPE ARCHITECT FOR INSPECTION AND APPROVAL OF AREAS RECEIVING DRIP IRRIGATION PRIOR TO INSTALLATION OF MULCH.
- CONTRACTOR SHALL PROVIDE THE OWNER AND LANDSCAPE ARCHITECT WITH AS-BUILT DRAWINGS, DETAILED SYSTEM OPERATION INSTRUCTIONS AND AN IRRIGATION SCHEDULE APPROPRIATE TO THE PROJECT SITE CONDITIONS AND PLANTED MATERIAL GROWTH REQUIREMENTS.

PLANT SCHEDULE

TREES	CODE	QTY	BOTANICAL / COMMON NAME	SIZE	CONT.	NOTES	
	AC-P	2	ACER PLATANOIDES 'POND' TM / EMERALD LUSTRE MAPLE	3" CAL.	B&B	NATURAL FORM, SINGLE LEADER	
	AC-R	2	ACER RUBRUM 'ARMSTRONG' / ARMSTRONG RED MAPLE	3" CAL.	B&B	TRUNK FREE OF BRANCHES 6'-7' FROM BASE	
	AM-G	2	AMELANCHIER X GRANDIFLORA 'AUTUMN BRILLIANCE' / 'AUTUMN BRILLIANCE' SERVICEBERRY	8' HEIGHT CLUMP	B&B	CLUMP FORM, 3 STEM MINIMUM	
	BE-N	8	BETULA NIGRA / RIVER BIRCH	12' HT. CLUMP	B&B		
	GI-B	8	GINKGO BILOBA 'AUTUMN GOLD' TM / MAIDENHAIR TREE	4" CAL.	B&B	TRUNK FREE OF BRANCHES 6'-7' FROM BASE	
	GL-T	9	GLEDITSIA TRIACANTHOS VAR. INERMIS 'DRAVES' / STREET KEEPER HONEY LOCUST	3" CAL.	B&B	NATURAL FORM, SINGLE LEADER	
	GY-D	7	GYMNOCLADUS DIOICA 'ESPRESSO' / KENTUCKY COFFEETREE	2.5" CAL.	B&B	TRUNK FREE OF BRANCHES 6'-7' FROM BASE	
	QU-B	6	QUERCUS BICOLOR / SWAMP WHITE OAK	4" CAL.	B&B	TRUNK FREE OF BRANCHES 6'-7' FROM BASE	
	QU-M	3	QUERCUS MACROCARPA 'URBAN PINNACLE' / URBAN PINNACLE OAK	3" CAL.	B&B	TRUNK FREE OF BRANCHES 6'-7' FROM BASE	
	QU-W	3	QUERCUS X WAREI 'LONG' TM / REGAL PRINCE OAK	3" CAL.	B&B	SINGLE LEADER, WELL BRANCHED	
	TI-B	3	TILIA AMERICANA 'BOULEVARD' / BOULEVARD LINDEN	3.5" CAL	B&B		
EVERGREEN TREES	CODE	QTY	BOTANICAL / COMMON NAME	SIZE	CONT.	NOTES	
	PI-F	10	PICEA PUNGENS 'FAT ALBERT' / FAT ALBERT COLORADO SPRUCE	8' HT.	B&B		
	PI-S	11	PINUS STROBUS 'FASTIGIATA' / PYRAMIDAL WHITE PINE	7' HT.	B&B		
	PI-P2	3	PINUS SYLVESTRIS / SCOTS PINE	12' HEIGHT	B&B	NATURAL, FULL FORM	
	TH-O	41	THUJA OCCIDENTALIS 'TECHNY' / TECHNY ARBORVITAE	8' HT.	B&B		
SHRUBS	CODE	QTY	BOTANICAL / COMMON NAME	SIZE	CONT.	NOTES	SPACING
	AR-M	6	ARONIA MELANOCARPA 'AUTUMN MAGIC' / AUTUMN MAGIC BLACK CHOKEBERRY	#5	CONT.		48" o.c.
	CE-A	5	CLETHRA ALNIFOLIA 'RUBY SPICE' / RUBY SPICE CLETHRA	#5	CONT.		42" o.c.
	CO-H	38	CORNUS HESSEI 'UMN970507' TM / GARDEN GLOW DOGWOOD	#5	CONT.		48" o.c.
	CO-R	20	CORNUS RACEMOSA / GRAY DOGWOOD	#5	CONT.		72" o.c.
	CO-A	15	CORNUS SERICEA 'ALLEMAN'S COMPACT' / DWARF RED TWIG DOGWOOD	#5	CONT.		48" o.c.
	CO-B	30	CORNUS SERICEA 'BAILADELINE' TM / FIREDANCE DOGWOOD	#5	CONT.		48" o.c.
	DI-L	35	DIERVILLA LONICERA / DWARF BUSH HONEYSUCKLE	#5	CONT.		48" o.c.
	PH-O	42	PHYSOCARPUS OPULIFOLIUS 'DONNA MAY' TM / LITTLE DEVIL NINEBARK	#5	CONT.		42" o.c.
	PH-D	11	PHYSOCARPUS OPULIFOLIUS 'DIABLO' / DIABLO NINEBARK	#5	CONT.		48" o.c.
	PH-P	48	PHYSOCARPUS OPULIFOLIUS 'PODARAS 3' / LEMON CANDY NINEBARK	#5	CONT.		48" o.c.
	RH-A	334	RHUS AROMATICA 'GRO-LOW' / GRO-LOW FRAGRANT SUMAC	#5	CONT.		48" o.c.
	RI-A	58	RIBES ALPINUM 'RED LAKE' / RED LAKE CURRANT	#5	CONT.		42" o.c.
	RA-G	10	RIBES ALPINUM 'GREEN MOUND' / GREEN MOUND ALPINE CURRANT	#5	CONT.		30" o.c.
	SO-S	42	SORBARIA SORBIFOLIA 'SEM' / SEM ASH LEAF SPIREA	#5	CONT.		36" o.c.
	SP-B	5	SPIRAEA BETULIFOLIA 'TOR' / TOR BIRCHLEAF SPIREA	#5	CONT.		42" o.c.
	SP-J	44	SPIRAEA JAPONICA 'DOUBLE PLAY GOLD' / SPIREA 'DOUBLE PLAY GOLD'	#5	CONT.		36" o.c.
	SP-G	9	SPIRAEA X BUMALDA 'GOLDFLAME' / GOLDFLAME SPIREA	#5	CONT.		36" o.c.
	VI-B	22	VIBURNUM TRILOBUM 'BAILEY COMPACT' / COMPACT AMERICAN VIBURNUM	#5	CONT.		48" o.c.
PERENNIALS	CODE	QTY	BOTANICAL / COMMON NAME	SIZE	CONT.	NOTES	SPACING
	CA-A	323	CALAMAGROSTIS X ACUTIFLORA 'KARL FOERSTER' / FEATHER REED GRASS	#1	CONT.		24" o.c.
	CA-N	71	CALAMINTHA NEPETA / LESSER CALAMINT	#1	CONT.		24" o.c.
	SH	900	SPOROBOLUS HETEROLEPIS / PRAIRIE DROPSEED	#1	CONT.		24" o.c.
SHRUB AREAS	CODE	QTY	BOTANICAL / COMMON NAME	SIZE	CONT.	NOTES	SPACING
	CF	5,468 SF	SHRUB GROUP 1				
	JF	46	CORNUS SERICEA 'FARROW' / ARCTIC FIRE RED TWIG DOGWOOD	5 GAL	CONT.		20% @ 60" o.c.
	JM4	36	JUNIPERUS CHINENSIS 'SEA GREEN' / SEA GREEN JUNIPER	5 GAL	CONT.		10% @ 48" o.c.
	RIB	72	JUNIPERUS HORIZONTALIS 'MOTHER LODGE' / CREEPING JUNIPER	5 GAL	CONT.		20% @ 48" o.c.
	ST3	127	RIBES ALPINUM / ALPINE CURRANT	5 GAL	CONT.		20% @ 36" o.c.
	VL2	36	SPIRAEA BETULIFOLIA 'TOR' / TOR BIRCHLEAF SPIREA	5 GAL	CONT.		10% @ 48" o.c.
		46	VIBURNUM LENTAGO / NANNYBERRY	5 GAL	CONT.		20% @ 60" o.c.
	CG	12,041 SF	SHRUB GROUP 2				
	VM	392	CORNUS RACEMOSA / GRAY DOGWOOD	5 GAL	CONT.		50% @ 48" o.c.
		392	VIBURNUM ACERIFOLIUM / MAPLELEAF VIBURNUM	5 GAL	CONT.		50% @ 48" o.c.
		2,827 SF	PERENNIAL GROUP 1				
		2,827 SF	-				
GROUND COVERS	CODE	QTY	BOTANICAL / COMMON NAME	SIZE	CONT.	NOTES	SPACING
	SOD	4,692 SF	SOD	SOD			



9920 Wayzata Blvd
9920 Wayzata Blvd
St Louis Park, MN 55426



500 Washington Avenue South, Suite 1080
Minneapolis, MN 55415
p: 612.337.5508 | 612.337.5382
www.esgarch.com

DAMON FARBER LANDSCAPE ARCHITECTS

310 South 4th Avenue, Suite 7050
Minneapolis, MN 55415
p: 612.332.7522

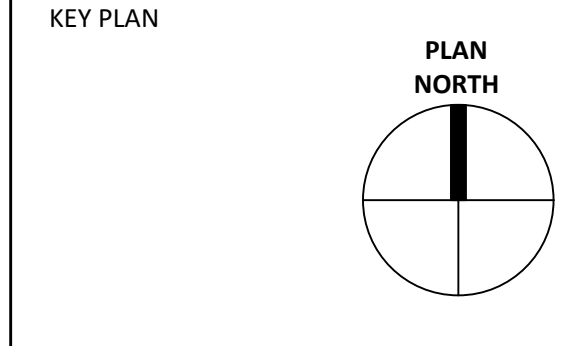
I hereby certify that this plan, specification, or report was prepared by me or under my direct supervision and that I am a duly licensed landscape architect under the laws of the State of Minnesota

Signature _____
Typed or Printed Name _____
License # Date _____

NOT FOR CONSTRUCTION

PUD APPLICATION - SEP 07 2021

ORIGINAL ISSUE:
REVISIONS:
221533 PROJECT NUMBER
KH JS
DRAWN BY CHECKED BY



9920 Wayzata Blvd

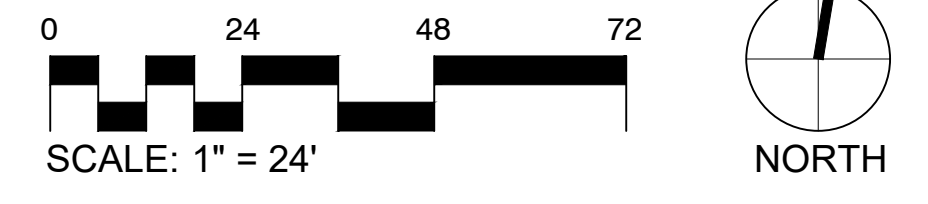
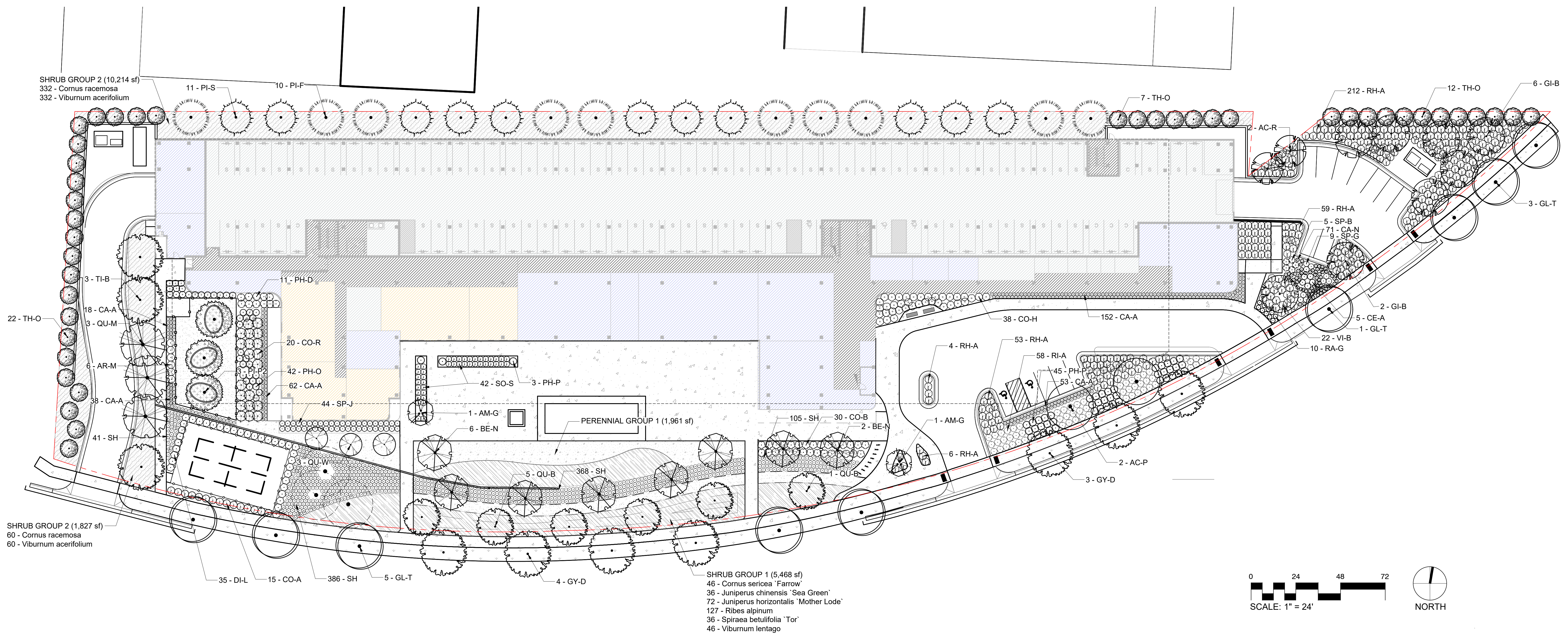
LANDSCAPE NOTE AND SCHEDULES

L0.01

I hereby certify that this plan, specification, or report was prepared by me or under my direct supervision and that I am a duly licensed landscape architect under the laws of the State of Minnesota.

Signature _____
 Typed or Printed Name _____
 License # _____ Date _____

NOT FOR CONSTRUCTION



PLANT LEGEND

TREES	CODE	BOTANICAL / COMMON NAME
	AC-P	ACER PLATANOIDES 'POND' TM / EMERALD LUSTRE MAPLE
	AC-R	ACER RUBRUM 'ARMSTRONG' / ARMSTRONG RED MAPLE
	AM-G	AMELANCHIER X GRANDIFLORA 'AUTUMN BRILLIANCE' / 'AUTUMN BRILLIANCE' SERVICEBERRY
	BE-N	BETULA NIGRA / RIVER BIRCH
	GI-B	GINKGO BILOBA 'AUTUMN GOLD' TM / MAIDENHAIR TREE
	GL-T	GLEDITSIA TRIACANTHOS VAR. INERMIS 'DRAVES' / STREET KEEPER HONEY LOCUST
	GY-D	GYMNOCLADUS DIOICA 'ESPRESSO' / KENTUCKY COFFEETREE
	QU-B	QUERCUS BICOLOR / SWAMP WHITE OAK
	QU-M	QUERCUS MACROCARPA 'URBAN PINNACLE' / URBAN PINNACLE OAK
	QU-W	QUERCUS X WAREI 'LONG' TM / REGAL PRINCE OAK
	TH-B	TILIA AMERICANA 'BOULEVARD' / BOULEVARD LINDEN
EVERGREEN TREES	CODE	BOTANICAL / COMMON NAME
	PI-F	PICEA PUNGENS 'FAT ALBERT' / FAT ALBERT COLORADO SPRUCE
	PI-S	PINUS STROBUS 'FASTIGIATA' / PYRAMIDAL WHITE PINE
	PI-P2	PINUS SYLVESTRIS / SCOTS PINE
	TH-O	THUJA OCCIDENTALIS 'TECHNY' / TECHNY ARBORVITAE
SHRUBS	CODE	BOTANICAL / COMMON NAME
	AR-M	ARONIA MELANOCARPA 'AUTUMN MAGIC' / AUTUMN MAGIC BLACK CHOKEBERRY
	CE-A	CLETHRA ALNIFOLIA 'RUBY SPICE' / RUBY SPICE CLETHRA
	CO-H	CORNUS HESSEI 'UMN970507' TM / GARDEN GLOW DOGWOOD
	CO-R	CORNUS RACEMOSA / GRAY DOGWOOD
	CO-A	CORNUS SERICEA 'ALLEMAN'S COMPACT' / DWARF RED TWIG DOGWOOD
	CO-B	CORNUS SERICEA 'BAILADELINE' TM / FIREDANCE DOGWOOD
	DI-L	DIERVILLA LONICERA / DWARF BUSH HONEYSUCKLE
	PH-O	PHYSOCARPUS OPULIFOLIUS 'DONNA MAY' TM / LITTLE DEVIL NINEBARK
	PH-D	PHYSOCARPUS OPULIFOLIUS 'DIABLO' / DIABLO NINEBARK
	PH-P	PHYSOCARPUS OPULIFOLIUS 'PODARAS 3' / LEMON CANDY NINEBARK
	RH-A	RHUS AROMATICA 'GRO-LOW' / GRO-LOW FRAGRANT SUMAC
	RA-G	RIBES ALPINUM 'GREEN MOUND' / GREEN MOUND ALPINE CURRANT
	SO-S	SORBARIA SORBIFOLIA 'SEM' / SEM ASH LEAF SPIREA
	SP-B	SPIRAEA BETULIFOLIA 'TOR' / TOR BIRCHLEAF SPIREA
	SP-J	SPIRAEA JAPONICA 'DOUBLE PLAY GOLD' / SPIREA 'DOUBLE PLAY GOLD'
	SP-G	SPIRAEA X BUMALDA 'GOLDFLAME' / GOLDFLAME SPIREA
	VI-B	VIBURNUM TRILOBUM 'BAILEY COMPACT' / COMPACT AMERICAN VIBURNUM
PERENNIALS	CODE	BOTANICAL / COMMON NAME
	CA-A	CALAMAGROSTIS X ACUTIFLORA 'KARL FOERSTER' / FEATHER REED GRASS
	CA-N	CALAMINTHA NEPETA / LESSER CALAMINT
	SH	SPOROBOLUS HETEROLEPIS / PRAIRIE DROPSEED
SHRUB AREAS	CODE	BOTANICAL / COMMON NAME
	CF	SHRUB GROUP 1 CORNUS SERICEA 'FARROW' / ARCTIC FIRE RED TWIG DOGWOOD
	JM4	JUNIPERUS CHINENSIS 'SEA GREEN' / SEA GREEN JUNIPER
	RIB	RIBES ALPINUM / ALPINE CURRANT
	ST3	SPIRAEA BETULIFOLIA 'TOR' / TOR BIRCHLEAF SPIREA
	VL2	VIBURNUM LENTAGO / NANNYBERRY
	CG	SHRUB GROUP 2 CORNUS RACEMOSA / GRAY DOGWOOD
	VM	VIBURNUM ACERIFOLIUM / MAPLELEAF VIBURNUM
PERENNIAL GROUP 1	CODE	BOTANICAL / COMMON NAME
GROUND COVERS	CODE	BOTANICAL / COMMON NAME
	SOD	SOD

TREE REPLACEMENT CALCULATIONS

335	EXISTING TREE CALIPER INCHES
295	TREE CALIPER INCHES TO BE REMOVED
301	PER CODE SECTION 36-364 - TOTAL REPLACEMENT CALIPER INCHES REQUIRED
369	TOTAL TREE REPLACEMENT CALIPER INCHES PROVIDED (48 X 4" TREES)

LANDSCAPE CODE REQUIREMENTS / CALCULATIONS

233	TREES REQUIRED
1758	SHRUBS REQUIRED
118	TREES PROVIDED
1921	SHRUBS PROVIDED

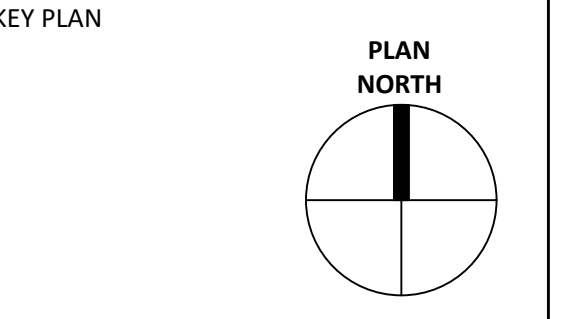
PROPOSED ALTERNATIVE LANDSCAPE BENEFITS INCLUDE:

- GREATER SHRUB QUANTITIES
- LARGER TREES THAN CODE MINIMUM (2.5" CAL)
- BENCHES AND PUBLIC WALKWAYS
- DORA % EXCEEDS REQUIRED AMOUNT

PUD APPLICATION
 -
SEP 07 2021

ORIGINAL ISSUE:
 REVISIONS:

221533
 PROJECT NUMBER
 KH JS
 DRAWN BY CHECKED BY



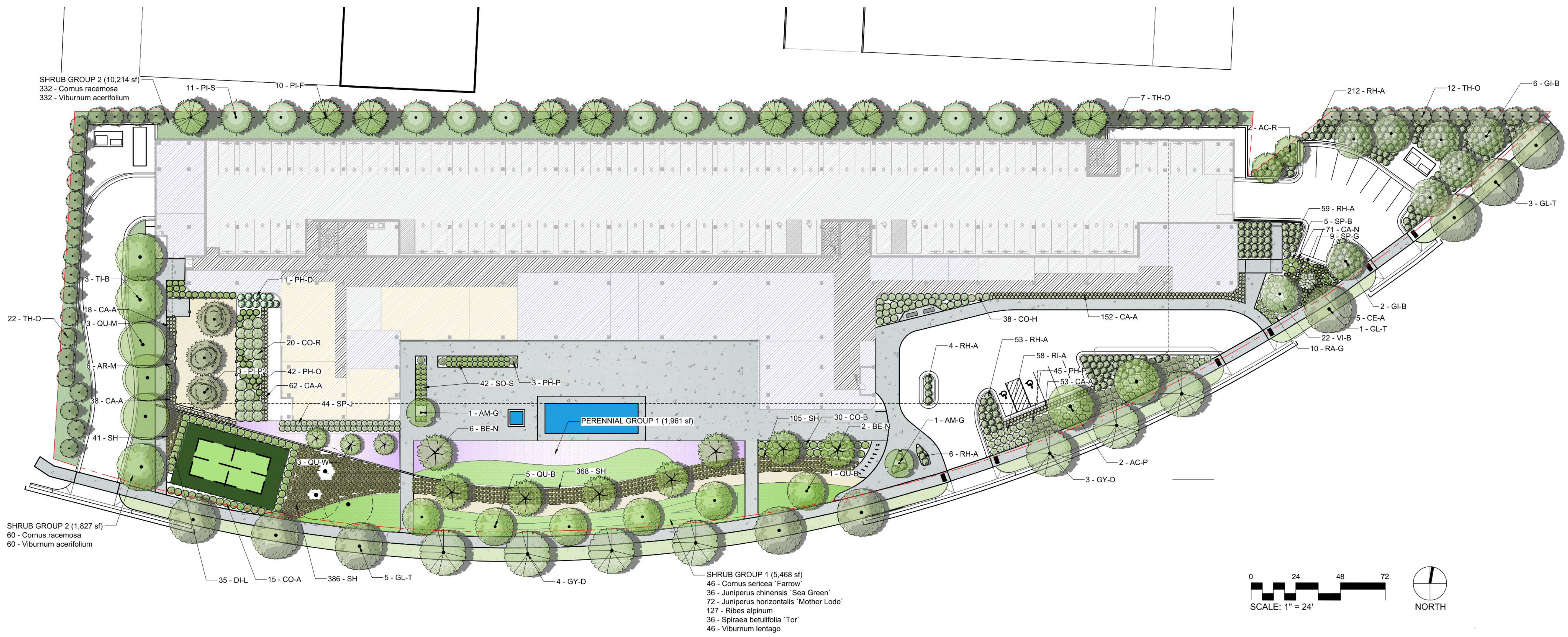
9920 Wayzata Blvd

LANDSCAPE PLAN
L0.02

I hereby certify that this plan, specification, or report was prepared by me or under my direct supervision and that I am a duly licensed landscape architect under the laws of the State of Minnesota

Signature _____
 Typed or Printed Name _____
 License # _____ Date _____

NOT FOR CONSTRUCTION



PLANT LEGEND

TREES	CODE	BOTANICAL / COMMON NAME
	AC-P	ACER PLATANOIDES 'POND' TM / EMERALD LUSTRE MAPLE
	AC-R	ACER RUBRUM 'ARMSTRONG' / ARMSTRONG RED MAPLE
	AM-G	AMELANCHIER X GRANDIFLORA 'AUTUMN BRILLIANCE' / 'AUTUMN BRILLIANCE' SERVICEBERRY
	BE-N	BETULA NIGRA / RIVER BIRCH
	GH-B	GINKGO BILOBA 'AUTUMN GOLD' TM / MAIDENHAIR TREE
	GL-T	GLEDITSIA TRIACANTHOS VAR. INERMIS 'DRAVES' / STREET KEEPER HONEY LOCUST
	GY-D	GYMNOCADUS DIOICA 'ESPRESSO' / KENTUCKY COFFEETREE
	QU-B	QUERCUS BICOLOR / SWAMP WHITE OAK
	QU-M	QUERCUS MACROCARPA 'URBAN PINNACLE' / URBAN PINNACLE OAK
	QU-W	QUERCUS X WAREI 'LONG' TM / REGAL PRINCE OAK
	TH-B	TILIA AMERICANA 'BOULEVARD' / BOULEVARD LINDEN
	PI-F	PICEA PUNGENS 'FAT ALBERT' / FAT ALBERT COLORADO SPRUCE
	PI-S	PINUS STROBUS 'FASTIGIATA' / PYRAMIDAL WHITE PINE
	PI-P2	PINUS SYLVESTRIS / SCOTS PINE
	TH-O	THUJA OCCIDENTALIS 'TECHNY' / TECHNY ARBORVITAE
	AR-M	ARONIA MELANOCARPA 'AUTUMN MAGIC' / AUTUMN MAGIC BLACK CHOKEBERRY
	CE-A	CLETHRA ALNIFOLIA 'RUBY SPICE' / RUBY SPICE CLETHRA
	CO-H	CORNUS HESSEI 'UMN970507' TM / GARDEN GLOW DOGWOOD
	CO-R	CORNUS RACEMOSA / GRAY DOGWOOD
	CO-A	CORNUS SERICEA 'ALLEMAN'S COMPACT' / DWARF RED TWIG DOGWOOD
	CO-B	CORNUS SERICEA 'BAILADELINE' TM / FIREDANCE DOGWOOD
	DI-L	DIERVILLA LONICERA / DWARF BUSH HONEYSUCKLE
	PH-O	PHYSOCARPUS OPULIFOLIUS 'DONNA MAY' TM / LITTLE DEVIL NINEBARK
	PH-D	PHYSOCARPUS OPULIFOLIUS 'DIABLO' / DIABLO NINEBARK
	PH-P	PHYSOCARPUS OPULIFOLIUS 'PODARAS 3' / LEMON CANDY NINEBARK
	RH-A	RHUS AROMATICA 'GRO-LOW' / GRO-LOW FRAGRANT SUMAC
	RA-G	RIBES ALPINUM 'GREEN MOUND' / GREEN MOUND ALPINE CURRANT
	SO-S	SORBARIA SORBIFOLIA 'SEM' / SEM ASH LEAF SPIREA
	SP-B	SPIRAEA BETULIFOLIA 'TOR' / TOR BIRCHLEAF SPIREA
	SP-J	SPIRAEA JAPONICA 'DOUBLE PLAY GOLD' / SPIREA 'DOUBLE PLAY GOLD'
	SP-G	SPIRAEA X BUMALDA 'GOLDFLAME' / GOLDFLAME SPIREA
	VI-B	VIBURNUM TRILOBUM 'BAILEY COMPACT' / COMPACT AMERICAN VIBURNUM
	SH	SPOROBOLUS HETEROLEPIS / PRAIRIE DROPSEED
	CF	SHRUB GROUP 1 CORNUS SERICEA 'FARROW' / ARCTIC FIRE RED TWIG DOGWOOD
	JF	JUNIPERUS CHINENSIS 'SEA GREEN' / SEA GREEN JUNIPER
	JM4	JUNIPERUS HORIZONTALIS 'MOTHER LODGE' / CREEPING JUNIPER
	RIB	RIBES ALPINUM / ALPINE CURRANT
	ST3	SPIRAEA BETULIFOLIA 'TOR' / TOR BIRCHLEAF SPIREA
	VL2	VIBURNUM LENTAGO / NANNYBERRY
	CG	SHRUB GROUP 2 CORNUS RACEMOSA / GRAY DOGWOOD
	VM	VIBURNUM ACERIFOLIUM / MAPLELEAF VIBURNUM
		PERENNIAL GROUP 1
		SOD

TREE REPLACEMENT CALCULATIONS

335	EXISTING TREE CALIPER INCHES
295	TREE CALIPER INCHES TO BE REMOVED
301	PER CODE SECTION 36-364 - TOTAL REPLACEMENT CALIPER INCHES REQUIRED
369	TOTAL TREE REPLACEMENT CALIPER INCHES PROVIDED (48 X 4" TREES)

LANDSCAPE CODE REQUIREMENTS / CALCULATIONS

233	TREES REQUIRED
1758	SHRUBS REQUIRED
118	TREES PROVIDED
1921	SHRUBS PROVIDED

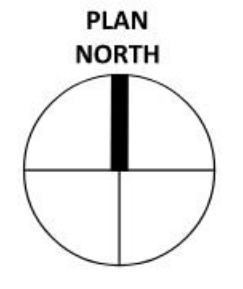
PROPOSED ALTERNATIVE LANDSCAPE BENEFITS INCLUDE:

- GREATER SHRUB QUANTITIES
- LARGER TREES THAN CODE MINIMUM (2.5" CAL)
- BENCHES AND PUBLIC WALKWAYS
- DORA % EXCEEDS REQUIRED AMOUNT

PUD APPLICATION
 -
SEP 07 2021

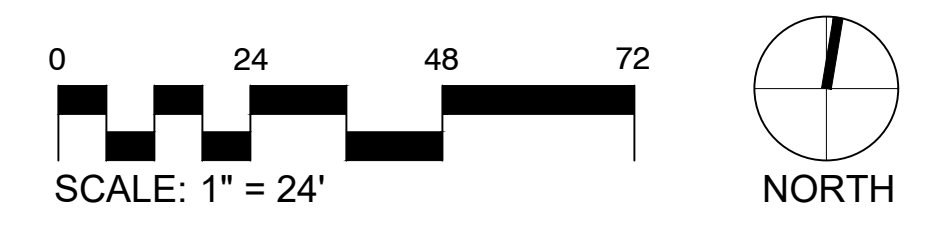
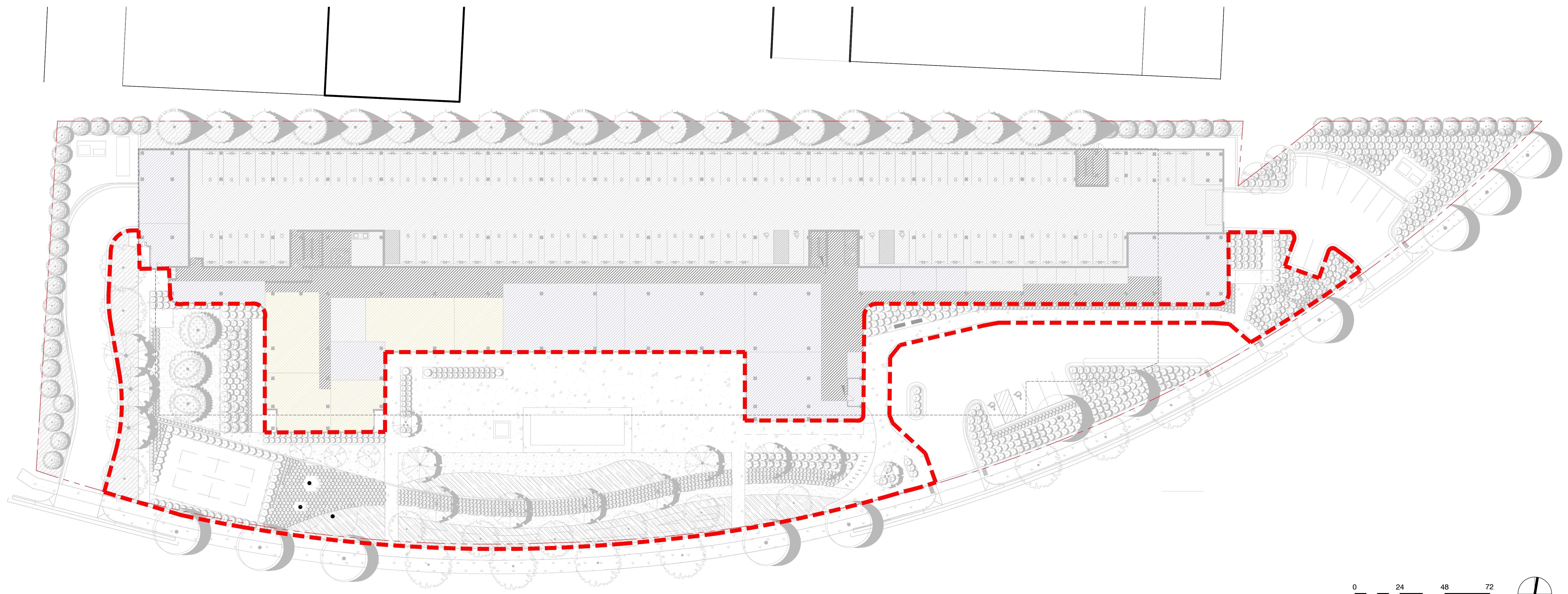
ORIGINAL ISSUE:
 REVISIONS:

221533
 PROJECT NUMBER
 KH JS
 DRAWN BY CHECKED BY
 KEY PLAN



9920 Wayzata Blvd
 LANDSCAPE PLAN
L0.02

**NOT FOR
CONSTRUCTION**



DORA CALCULATIONS

53,650 SF
(31.1%)

PUD APPLICATION
-
SEP 07 2021

ORIGINAL ISSUE:

REVISIONS:

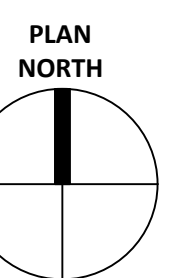
221533

PROJECT NUMBER

KH JS

DRAWN BY CHECKED BY

KEY PLAN



9920 Wayzata Blvd

DORA PLAN

L0.04