

SITE STATISTICS:
THE PROPERTY IS ZONED "MX-2 NEIGHBORHOOD MIXED-USE"

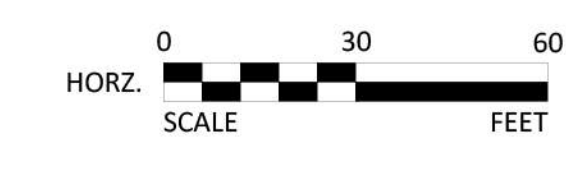
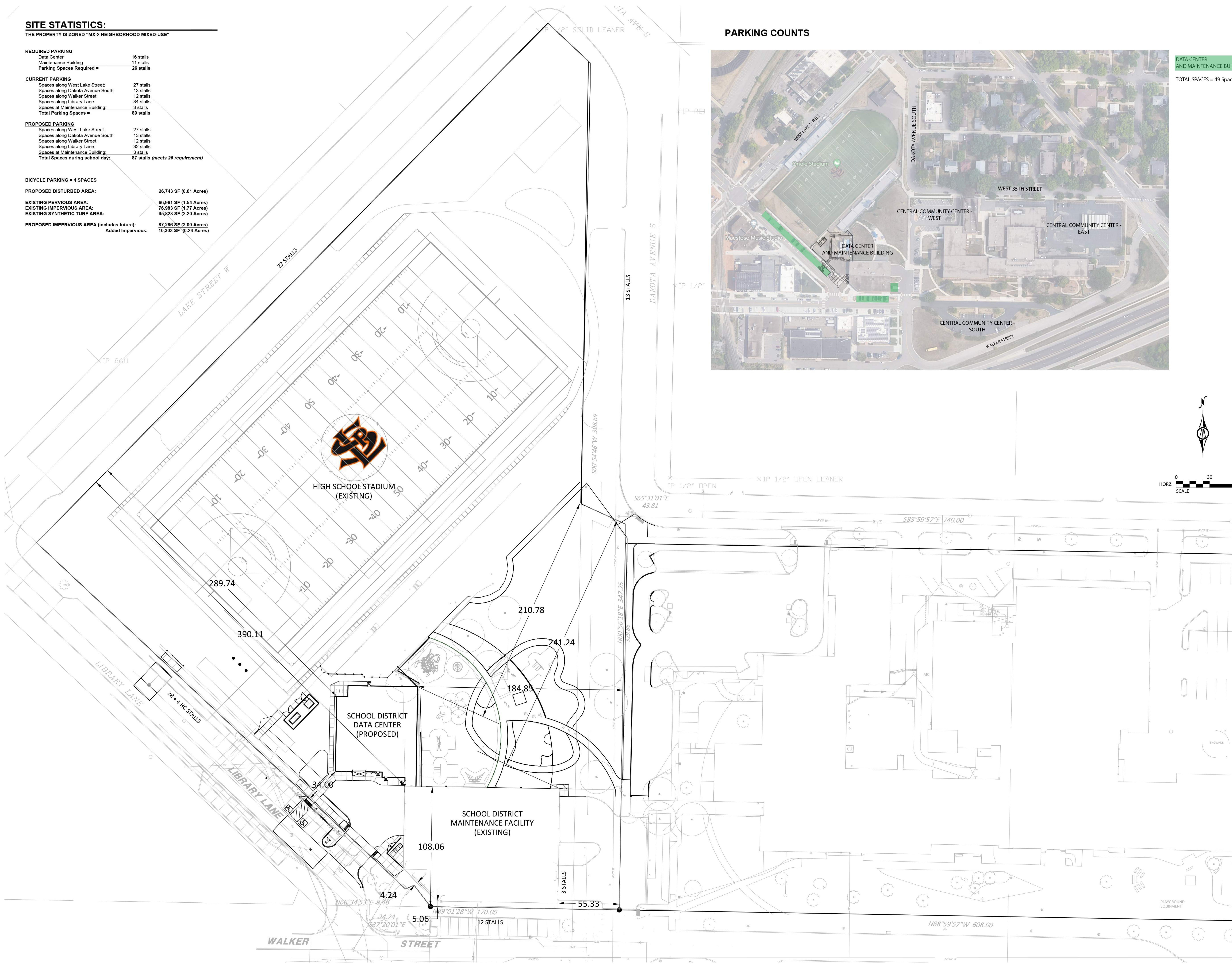
REQUIRED PARKING	
Data Center	16 stalls
Maintenance Building	11 stalls
Parking Spaces Required =	26 stalls
CURRENT PARKING	
Spaces along West Lake Street:	27 stalls
Spaces along Dakota Avenue South:	13 stalls
Spaces along Walker Street:	12 stalls
Spaces along Library Lane:	34 stalls
Spaces at Maintenance Building:	3 stalls
Total Parking Spaces =	89 stalls
PROPOSED PARKING	
Spaces along West Lake Street:	27 stalls
Spaces along Dakota Avenue South:	13 stalls
Spaces along Walker Street:	12 stalls
Spaces along Library Lane:	32 stalls
Spaces at Maintenance Building:	3 stalls
Total Spaces during school day:	87 stalls (meets 26 requirement)

BICYCLE PARKING = 4 SPACES	
PROPOSED DISTURBED AREA:	26,743 SF (0.61 Acres)
EXISTING PERVIOUS AREA:	66,961 SF (1.54 Acres)
EXISTING IMPERVIOUS AREA:	76,983 SF (1.77 Acres)
EXISTING SYNTHETIC TURF AREA:	95,823 SF (2.20 Acres)
PROPOSED IMPERVIOUS AREA (includes future):	87,286 SF (2.00 Acres)
Added Impervious:	10,303 SF (0.24 Acres)

PARKING COUNTS



DATA CENTER AND MAINTENANCE BUILDING
TOTAL SPACES = 49 Spaces



**CUP APPLICATION SET
NOT FOR CONSTRUCTION
7/14/2023**

Revisions		
No.	Date	Description
####	####	####

Project Information
Phase: CUP Date: 7/17/2023
Project No.: 128538 PIC/AIC: ####
St. Louis Park Public Schools -
Maintenance Building and Data
Center

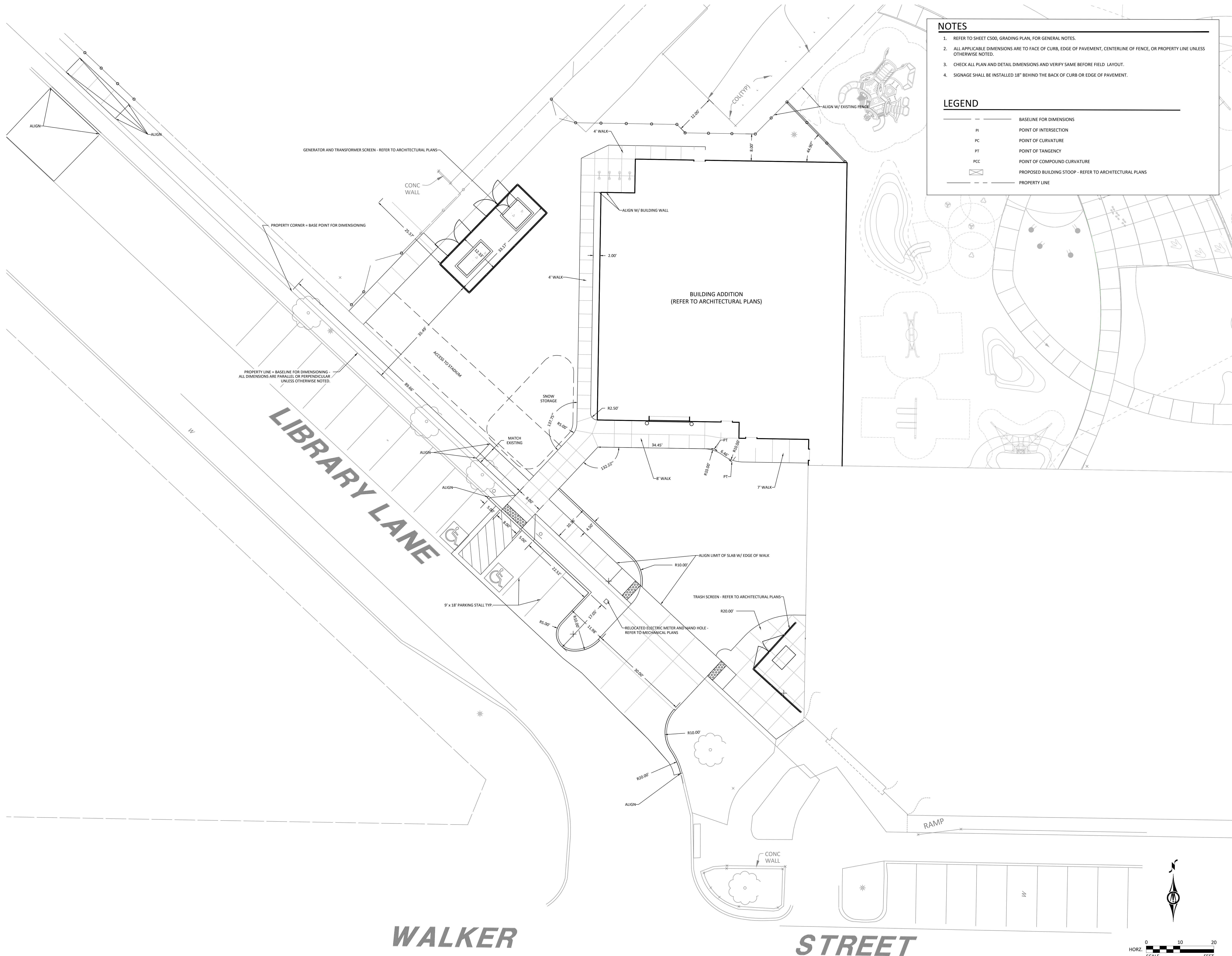
Sheet Title
SITE REFERENCE PLAN

Sheet Number **C1.00** **Current Revision**



Cunningham

14th Street | Suite 325 | Minneapolis | MN 55414
m.com



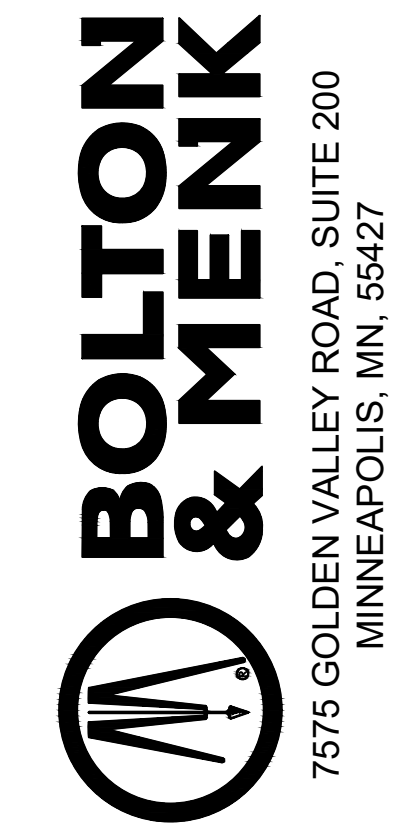
NOTES

- REFER TO SHEET C500, GRADING PLAN, FOR GENERAL NOTES.
- ALL APPLICABLE DIMENSIONS ARE TO FACE OF CURB, EDGE OF PAVEMENT, CENTERLINE OF FENCE, OR PROPERTY LINE UNLESS OTHERWISE NOTED.
- CHECK ALL PLAN AND DETAIL DIMENSIONS AND VERIFY SAME BEFORE FIELD LAYOUT.
- SIGNAGE SHALL BE INSTALLED 18" BEHIND THE BACK OF CURB OR EDGE OF PAVEMENT.

LEGEND

- BASELINE FOR DIMENSIONS
- PI POINT OF INTERSECTION
- PC POINT OF CURVATURE
- PT POINT OF TANGENCY
- PCC POINT OF COMPOUND CURVATURE
- ▭ PROPOSED BUILDING STOOP - REFER TO ARCHITECTURAL PLANS
- - - PROPERTY LINE

201 SE Main Street | Suite 325 | Minneapolis | MN 55414
 cuningham.com



Cunningham

**CUP APPLICATION SET
 NOT FOR CONSTRUCTION
 7/14/2023**

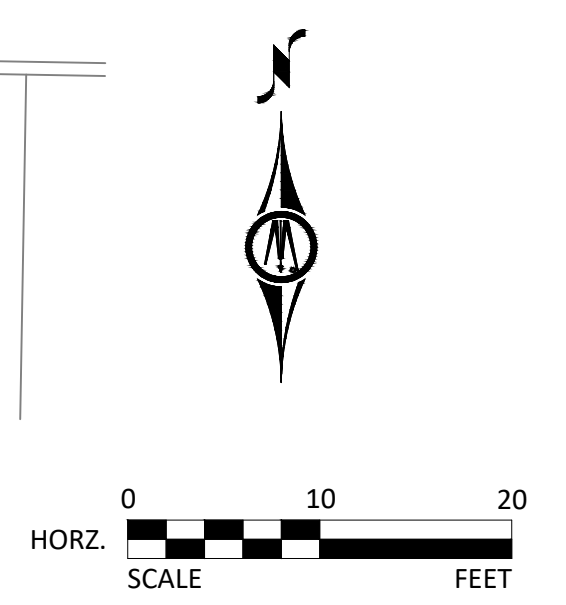
I hereby certify that this plan, specification, or report was prepared by me or under my direct supervision and that I am a duly Licensed Landscape Architect under the laws of the state of Minnesota.

Signed:
 Revisions
 No. Date Description

Project Information
 Phase: CUP Date: 7/17/2023
 Project No.: 128538 PIC / AIC: ####
 St. Louis Park Public Schools -
 Maintenance Building and Data
 Center

Sheet Title
 SITE LAYOUT PLAN

Sheet Number **Current Revision**
C3.00



WALKER

STREET