

Park Perspective

October 2023

www.stlouisparkmn.gov

St. Louis Park
MINNESOTA

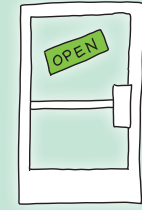


St. Louis Park welcomes its first police K-9, Maverick. Story on page 3.

Inside this newsletter

2024 budget and tax estimates.....	2
New police K-9 in training.....	3
Home energy saving tips	4
Finding your polling place.....	5
Snowfall and parking reminders	6
Fall collection service updates.....	7
Upcoming city events.....	8

This is the official city newsletter of the City of St. Louis Park. It's printed on 30% post-consumer recycled paper in an effort to meet the city's environmentally preferable purchasing policy.



POLLING PLACE

NOVEMBER						
S	M	T	W	T	F	S
			1	2	3	4
5	6	7	8	9	10	11
12	13	14	15	16	17	18
19	20	21	22	23	24	25
26	27	28	29	30		

General election 2023

Tuesday, Nov. 7 ★ Polls open 7 a.m. – 8 p.m.

Voting is a cornerstone of civic engagement. It's a chance to help guide the direction of the community and hold your representatives accountable. Local elections don't get as much attention as federal ones, but they can have even larger impacts on your quality of life. Be sure to make a plan to vote!

What offices are on the ballot?

This year, you'll have a say in electing two council members, four school board members and a new mayor.

When can I vote?

Polling places will be open 7 a.m. – 8 p.m. on Election Day, Nov. 7. Early (absentee) voting started Sept. 22 and is available through Nov. 6.

Where can I vote?

To find your polling place, call 952.924.2503, visit mnvotes.gov/pollfinder, scan the QR code or flip to page 5 for a precinct map. Your polling place is also included on a postcard mailed to you after you register to vote.



For more information on elections and voting, turn to page 5 of this newsletter, call 952.924.2503, email elections@stlouisparkmn.gov or visit www.stlouisparkmn.gov/vote.

PRSR STD
U.S. Postage
PAID
Twin Cities, MN
Permit No. 603



The City of St. Louis Park has contracted with three new solid waste haulers starting Oct. 1, 2023: Waste Container Systems, Republic Services and The Buckingham Companies. Their trucks were on display at the solid waste open house this August outside the Municipal Service Center.

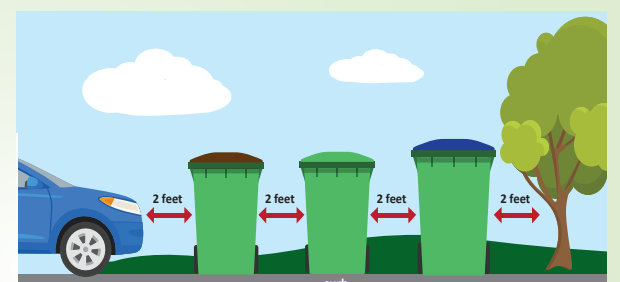
Three new solid waste haulers begin this fall

Changes to the residential solid waste collection program began Oct. 1. Households were recently mailed contact information for the new haulers and additional details. You can also find contact information and updates at www.stlouisparkmn.gov/garbage-recycling. Residents' collection day and recycling week won't change.

How to find your collection day and recycling week

Visit www.stlouisparkmn.gov/recycling or turn to page 7 to view a collection day map and recycling calendar. Collection frequency is as follows:

- Recycling: every other week
- Organics: weekly
- Yard waste: weekly; April – November
- Garbage: weekly; 30-gallon service levels may opt for collection every other week



Cart spacing: Carts set out curbside for collection must be spaced 2 feet apart and 2 feet from other objects (trees, cars, etc.) to allow drivers in automated trucks to safely and efficiently provide collection. Place carts so lids open toward the street and as close to the curb as possible without being in the street or sidewalk. Households with alley collection don't need carts spaced apart.

Preliminary 2024 city budget and property tax levy set

In September, the St. Louis Park City Council approved the 2024 preliminary property tax levies with a combined 7.7% increase over the 2023 property tax levies. It's important to note this is a preliminary tax levy only. By law, cities are required to set their preliminary levy in September, then finalize it in December. The final property tax levy may be lower than the proposed 7.7% preliminary tax levy, but it can't be higher.

St. Louis Park relies on levy revenue to support operating and capital funds. The recommended 2024 budget includes several changes from last year. Most changes fall into one of two categories:

1. Adjustments needed to maintain current service level.
2. Adjustments made to increase the level of service provided or to invest in new programming aligned with the city's strategic priorities.

These changes and the city's overall 2024 budget will be examined in more detail in the February *Park Perspective*. Visit www.stlouisparkmn.gov/finance for more information about the 2024 proposed tax levy.

What it means for you

On the average median-value home of \$373,300, the proposed 7.7% property tax levy adds about \$5.61 more per month than the 2023 property tax bill. Regardless of the final tax levy, the St. Louis Park portion of your property tax may go up or down from 2023 to 2024. This is due to multiple factors, including changes to your property value and changes in the values of other properties in the community.

We want your feedback

Here's how you can comment on the 2024 budget proposal and proposed tax levy before its final adoption, Dec. 18, 2023:


- Email budget@stlouisparkmn.gov with your comments or questions.
- Participate in a public hearing at the St. Louis Park City Council meeting Dec. 4, 6:30 p.m., City Hall Council Chambers, 5005 Minnetonka Blvd.


Truth-in-taxation notices


Truth-in-taxation notices are mailed in November. They show the proposed tax amount for the following year for each taxing jurisdiction and include the meeting dates where you can provide input.


Follow the city's strategic priorities


The symbols below represent the five core priorities of the City of St. Louis Park and its city council. Spot them throughout this newsletter.

 Being a leader in racial equity and inclusion in order to create a more just and inclusive community for all.

 Continuing to lead in environmental stewardship.

 Providing a broad range of housing and neighborhood-oriented development.

 Providing a variety of options for people to make their way around the city comfortably, safely and reliably.

 Creating opportunities to build social capital through community engagement.

To learn more about the St. Louis Park leadership priorities, visit www.stlouisparkmn.gov/our-city/about-us.

Understanding property taxes

Why do we have property taxes?

Property taxes are the primary funding source for local services provided by cities, counties, school districts and other special districts. They fund streets and utility maintenance, public safety and emergency response, parks and recreation, water and sewer services, election coordination, solid waste management, capital improvements, redevelopment investments, public education, courts, libraries, community events and more.

Unlike sales or income taxes, which can vary, the property tax is an exact levy to fund capital and operating budgets. City budgets are determined each year by city staff and elected officials with the help of public input. For more in-depth details on this process, visit www.stlouisparkmn.gov/finance.

Determining assessed value and classification

The city's assessing office determines the estimated market value (EMV) and classification (use) of your property on Jan. 2 each year. The EMV is determined after reviewing comparable market activity (rent, sales, costs) and may be reduced by programs such as the homestead market exclusion and disabled veteran exclusion. The valuation and classification notices are mailed in March. When you receive the notice, read it carefully. If you believe your property valuation and classification are accurate, no further action is needed. If you have questions about either, contact the St. Louis Park Assessing Division at 952.924.2535. Most questions can be answered in an informal discussion. If you disagree with the valuation or classification, follow the appeal process steps listed on the notice. But don't delay. Valuations can't be appealed after proposed property taxes are sent.

Calculating property taxes

Your property taxes are calculated using the prior year's value and classification relative to the annual established budgets. The tax is your share of the costs to provide the services approved by elected officials.

Truth-in-taxation notices are mailed in November after preliminary tax levies are set, but before final taxes are calculated. The final notice you receive is your property tax statement, which is mailed by March 31 annually. It tells you how much property tax you owe for the year and provides an itemized list of all local property taxes, including city, county, school district, etc. It also includes any special assessments on your property.

When are property taxes due and what about refunds?

Most property taxes are due May 15 and Oct. 15 in equal installments.

Property owners and renters are urged to annually review their eligibility for property tax refunds. Visit the Minnesota Department of Revenue's website at www.revenue.state.mn.us or contact the St. Louis Park Assessing Division at 952.924.2535 for more information.

Stay informed

To talk to someone in person, visit city hall at 5005 Minnetonka Blvd., during business hours, Monday – Friday, 8 a.m. – 4:30 p.m. Can't make it out? Call the main number during business hours at 952.924.2500 or try one of our many online resources.

For city events, activities, schedules and news updates, visit www.stlouisparkmn.gov, sign up for text and email notifications through govDelivery, or follow us on social media.

 www.stlouisparkmn.gov/sign-up

 [@stlouispark](https://www.facebook.com/stlouispark)


 [@stlouispark](https://www.instagram.com/stlouispark)

 [nextdoor.com](https://www.nextdoor.com)

 www.youtube.com/slpcable

 [@stlouisparkmn](https://www.tiktok.com/@stlouisparkmn)

Make service requests or receive city information via the app

 www.mystlouispark.org



St. Louis Park Police Department welcomes first K-9

In new partnership, Maverick and Officer McNeely will train together throughout the fall.

This summer, the St. Louis Park Police Department welcomed its first K-9 to the team. Maverick, a one-year-old German Shepherd from Slovakia, is currently undergoing a rigorous 12-week training with his new handler, Officer Matt McNeely. Officer McNeely has worked full time with the department since 2019 and recognized early on the benefits of bringing a K-9 program to the city.

“I didn’t know I wanted to become a K-9 handler until one of my first calls for service,” McNeely said. “A K-9 was called in for support from a neighboring department, and I was fascinated by the dog’s ability to effectively and efficiently resolve the situation. After that, I knew that being a K-9 handler was something I wanted to do.”

The experience inspired Officer McNeely to research and interview other agencies with K-9s to see how he could make a St. Louis Park K-9 program a reality. He submitted a detailed proposal to the department highlighting the benefits of a K-9 program, including increased officer safety and the ability to quickly handle calls about explosive threats and suspects who have fled the scene. Department officials agreed with his assessment and thought McNeely would be a natural fit for the city’s first K-9 handler.

Before finalizing the decision to add a K-9 program, the city also reached out to public stakeholders and community groups for feedback and to address any concerns.

A new partnership forms

Maverick and Officer McNeely are undergoing extensive training through the rest of the year. They’ve been together 24/7 since the day they met in order to establish their relationship and Maverick’s understanding of who’s in charge.

“In the short amount of time we’ve been together, we’ve become extremely close,” McNeely said. “The bond between us is something I can’t describe.”

Every year, Officer McNeely and Maverick will attend a multi-day course to get recertified in patrol work and explosive detection to ensure top performance and accountability.

K-9 program helps fill a need in the west metro



Once training is complete, Maverick’s role will be to assist with tracking individuals and detecting explosives. If someone is fleeing by foot or goes missing, or if a bomb threat is called into a school or anywhere else, Maverick and McNeely will be there to help.

There are a limited number of K-9s in the west metro trained to detect explosives. Most of the police K-9s detect narcotics.

“By starting this program, we are helping to fill a void in the area,” said Sgt. Dennis Hagen. “Now we can help other communities as well as our own.”

Maverick will also have a big role in community outreach and public education. You’ll see him throughout the city on patrol and at events, helping to build relationships with residents. Starting next year, you can request a K-9 officer demonstration for your community group or event by emailing Sgt. Dennis Hagen at dhagen@stlouisparkmn.gov.

Funding the K-9 program and looking ahead

Initial program costs were funded through donations. Ongoing donations will be needed to cover vet bills, dog food and supplies, and recertification.

“I’m hoping to build a reputable and well-known K-9 program in the west metro,” McNeely said. “I want to show our department and city the benefits that K-9s provide in keeping officers and the public safe. If a dangerous criminal is running through our neighborhoods, there is no better tool to safely locate them than a K-9.”

Keep an eye out for Officers McNeely and Maverick as they begin their patrol together early next year. For more information about the program and ways you can support it, visit www.stlouisparkmn.gov/police-k9.



Maverick and Officer Matt McNeely in front of the St. Louis Park Police Department.

K-9 Q&A

Where does Maverick live when not on the job?

Maverick lives with Officer McNeely and his family, including two furry German Shepherd mix friends, who are a bit jealous that Maverick currently gets his own private room, a requirement of his training. He’s like any other dog when at home, McNeely said, chasing balls, playing with the other dogs and spending time with the family.

What happens to Maverick after retirement?

Most police K-9s continue to live with the handler’s family after they retire. The amount of time a dog is able to work depends largely on the health of the dog and its ability to perform the tasks that it’s trained to do. In general, a healthy dog can be expected to work until it’s 8 – 10 years old.

Can community members pet Maverick?

Although Maverick is a very social dog and loves to meet new people, please ask Officer McNeely before approaching or petting him. Officer McNeely will know the best way to introduce you to him and whether it’s an appropriate time.

Why use K-9 officers?

K-9 officers are known for their incredible sense of smell and locating abilities. Trained police K-9s’ brains are estimated to be up to 50 times better at interpreting scent than humans, and they can find evidence, explosives or people much more effectively. K-9 officers can also help resolve dangerous situations in a safer manner.



Bring warmth and energy savings to your home

Keeping your home warm throughout winter is expensive, but there are ways to lower costs and funds that can help.

Funding available to help make your home energy efficient

If your home needs energy efficiency improvements, cost share funding is available to help you complete projects like air sealing and insulation, furnace and air conditioner replacements, and cold climate air source heat pump installation. The first step is to apply for a city-discounted Home Energy Squad planner visit. Residents of St. Louis Park qualify for a 50% discount, and income-qualified residents are eligible for free Energy Squad visits. Call 651.328.6220 or visit www.mncee.org/home-energy-squad to sign up.

At your visit, you'll learn how your home uses energy and what energy-saving opportunities can lower utility bills. Energy experts can also install materials such as LED lightbulbs, door weather stripping and more. After your visit, you can apply for the city's Climate Champions cost share funding at www.stlouisparkmn.gov/climate-champions for matching rebates ranging from 50% to 200% of project costs.

Bonus solar reimbursement

Energy efficient homes and buildings use less energy to heat, cool and run appliances and electronics. Ensuring your home is energy efficient is an important step to take before going solar. Energy efficient homes may qualify for the City of St. Louis Park Climate Champions Solar Bonus cost share program. Visit www.stlouisparkmn.gov/climate-champions or email apottorff@stlouisparkmn.gov to learn more about the program.

Efficiency programs for apartment buildings

Apartment buildings with more than five units are eligible for a free whole-building energy audit through the Multi-Family Building Efficiency program from Xcel Energy and CenterPoint Energy for no-cost direct install options and bonus rebates. Property managers can sign up at www.multifamilyenergysolutions.com.



Commercial property owners can request a free Idle-Free SLP sign for their parking lots

Reducing vehicle idling makes the environment cleaner and quieter. Car exhaust has been linked to numerous health risks, including asthma, cognitive impairment and even cancer. Ten seconds of idling uses more fuel than stopping and restarting the engine. To request a free aluminum idle-free sign for your commercial or multifamily parking lot, email erabine@stlouisparkmn.gov.



Electrify Everything free fall workshop is Nov. 4

Have you been hearing about heat pumps, induction stoves or hybrid water heaters? Come learn all about home electrification at the Electrify Everything workshop Saturday, Nov. 4, 10 a.m. – noon at the Westwood Hills Nature Center. At the workshop, you'll learn about how to switch from fossil fuel-powered appliances to electric ones and what resources are available to help you make the transition. You will also have the opportunity to connect with contractors at the end of the event to ask questions and get projects started.

To register for the workshop, visit bit.ly/electrifyRSVP.



WEST METRO HOME REMODELING FAIR

West Metro Home Remodeling Fair

Mark your calendar for the 2024 West Metro Home Remodeling Fair on Feb. 25, 10:30 a.m. – 3 p.m., at the Eisenhower Community Center, 1001 Highway 7, Hopkins! At this free event, you'll find:

- More than 75 exhibitors, including contractors and architects
- Free consultations
- Remodeling seminars and workshops

You'll also find City of St. Louis Park staff with resources on energy efficiency, waste reduction, deconstruction grants and remodeling loans! Stop by to learn more.

Visit homeremodelingfair.com for all the details!



Flood risk is not just a spring issue

Many people don't think about flood insurance until it's too late, but rainfall and flooding events will likely continue to get more extreme.

Here are some facts you should know:

- Since 2001, widespread rains of more than 6 inches are four times more frequent than in the previous three decades in Minnesota.
- Rainfall events of more than 3 inches have increased 65% since 2000 in Minnesota.
- More than 30% of flood insurance claims in Minnesota are for damage outside of FEMA-mapped high-risk zones.
- Nearly 50% of flood damage is outside of FEMA-mapped high-risk zones.

Visit www.stlouisparkmn.gov/floodplain for more information on flood hazards, risks and building responsibly.



Down payment assistance and first-generation homeowner programs help new buyers

Don't be quick to assume you can't afford a new home in St. Louis Park. The city offers assistance to both first-time and first-generation buyers.

First-time buyers assistance

Down payment and closing cost assistance is offered to first-time home buyers or those who have not owned a home in the last three years.

The city provides zero-percent interest deferred loans up to \$15,000, not to exceed 5% of the purchase price. An additional \$5,000 is available for employees of St. Louis Park businesses to encourage people to live where they work. Income restrictions apply.

Visit bit.ly/SLPhomeownership for more information.

First-generation ownership assistance

Many families have used home ownership as a key way to build generational wealth and stability, but historical and institutional racism has disproportionately created housing challenges and disparities for under-served, low-income communities. The income and education gaps between households of color and white households has also prevented people of color from obtaining mortgages, which further reduces the chance at home ownership and the critical investment opportunity it creates, causing a negative feedback loop.

The city's first-generation home ownership program is designed to help break that cycle and treat housing as not only a public good, but a human right.

To be considered for the program, the buyer must have never owned a home, and their parents must have never owned a home. Income restrictions apply.

For more information, visit bit.ly/SLPhomeownership or contact Marney Olson at 952.924.2196 or email molson@stlouisparkmn.gov.

Note: Programs are subject to changes in funding availability.



WARD 1
Precinct 1 - Beth El Synagogue, 5225 Barry St W
Precinct 2 - Wat Thai of Minnesota, 2544 Highway 100 S
Precinct 3 - St. Louis Park City Hall, 5005 Minnetonka Blvd

WARD 3
Precinct 7 - St. Louis Park Senior High School, 6425 33rd St W
Precinct 8 - Aquila Elementary School, 8500 31st St W
Precinct 9 - Lenox Community Center, 6715 Minnetonka Blvd

WARD 2
Precinct 4 - St. Louis Park Rec Center, 3700 Monterey Dr
Precinct 5 - Vista Lutheran Church, 4003 Wooddale Ave
Precinct 6 - St. Louis Park Municipal Service Center, 7305 Oxford St

WARD 4
Precinct 10 - St. Louis Park Middle School, 2025 Texas Ave S
Precinct 11 - Park Harbor Church, 1615 Texas Ave S
Precinct 12 - Westwood Lutheran Church, 9001 Cedar Lake Rd

Elections and voting information continued from page 1

Who can register to vote?

To be eligible to vote, you must be:

- At least 18 years old on Election Day
- A U.S. citizen
- A resident of Minnesota for 20 days
- Not currently incarcerated for a felony

New this year: Voting rights have been restored for people serving a felony sentence who are no longer incarcerated.

What is ranked-choice voting?

The City of St. Louis Park uses ranked-choice voting for city council and mayoral races. Ranked-choice voting is just what it sounds like. It allows voters to rank candidates in order of preference. If your first choice doesn't gain enough votes to advance, your vote will transfer to your next preferred candidate.

Am I registered to vote?

Check your registration status at www.stlouisparkmn.gov/vote or call 952.924.2503 at least one month before Election Day.

Where can I find more information?

This September, all households in St. Louis Park were mailed a 2023 election guide newsletter. If you have more questions, that's a great place to start. You can also visit www.stlouisparkmn.gov/vote for information on voting in St. Louis Park. For general information about voting, visit the Secretary of State's website, www.sos.state.mn.us/elections-voting. You may also call the city's elections office at 952.924.2503 or visit in person during business hours on the third floor of city hall, 5005 Minnetonka Blvd.



Arrive + Thrive: Help plan the next 20 years

A lot has changed in the last 20 years along the Cedar Lake Trail, Excelsior Boulevard and future light rail corridor in St. Louis Park. We want to hear what you think the next big change should be. Help shape the next 20 years by participating in the Arrive + Thrive civic engagement project. Engagement events will occur throughout the month of October, and online engagement will be open through the end of October. Give your input on future projects in the gateway areas around the future Beltline Avenue Station, Wooddale Avenue Station, Louisiana Avenue Station and western Excelsior Boulevard. Let us know your ideas for businesses, parks, transportation and anything else in and near these future areas of development! To sign up for project updates, visit bit.ly/transit-area-plan. For more about the Arrive + Thrive project or to provide feedback through the online interactive map, visit www.engage.mendcollaborative.com/arrive-and-thrive-park.

After it snows

Snowplow Q&A

After an inch or more of snowfall, the city plows 116 miles of roads, 52 miles of sidewalks, 30 miles of trails and 21 miles of alleys — and often more than once. It takes a crew of 30 workers roughly 12 hours to clear all streets during an average 3- to 6-inch snowfall. Heavier or wetter snowfalls require more time. In a snow event, high-volume roads are plowed first; residential streets and cul-de-sacs are next.

What slows down snowplow time?

Traffic, parked vehicles and solid waste carts in the street all affect the amount of time it takes to plow. Snowfall before or during rush hour causes significant snowplowing delays, as does maneuvering around obstacles in roads. If you have to park on the street during a snow event, try not to park directly across from another vehicle. After snow piles up, cars parked on both sides of the street can make the roadway too narrow to get through, which can block emergency vehicles.

How will I know when it's OK to clear my driveway?

Unfortunately, plowed-in driveways are unavoidable. If you clear your driveway before the street is plowed curb to curb, you will probably have to clear your driveway opening again. Plows may make multiple passes to clear streets fully and make enough room for emergency vehicles to get through.

What should I do in a snow emergency?

The city may declare snow emergencies for major snow events based on the amount of snow, type of snow and existing conditions. During a snow emergency, vehicles must be parked off the street until the street is plowed to the curb. Vehicles that aren't moved may be ticketed and towed. Some streets are exempt. Find an updated exemption map and other snow emergency information at www.stlouisparkmn.gov/snow.

How else can I help?

You can help by following parking ban guidelines, removing snow from sidewalks promptly, not putting snow in public areas, and exercising caution near snow removal vehicles. For questions, call 952.924.2562.



How will I know if there's a snow emergency?

The city announces snow emergencies in several ways. Use any of the following to find out if a snow emergency has been declared:

- Watch the city website at www.stlouisparkmn.gov or visit www.slpsnow.com.
- Visit www.slpsnow.com to sign up for ParkAlert, the city's citizen notification system.
- Download the mystlouispark app for Apple or Android devices. The app will display an alert when a snow emergency is in effect.
- Follow the city's social media sites on Facebook and Instagram (@stlouispark), as well as Nextdoor (nextdoor.com).
- Visit www.stlouisparkmn.gov/sign-up to register for govDelivery email and text notifications for snow emergencies and other events.
- Call 952.230.0743 for updates.
- Watch ParkTV (www.parktv.org) or the local television news stations (channels 4, 5, 9 and 11).

Can't make it to city hall due to bad weather? Most services can be accessed online. See our online resources list on page 2 for options.



Be a Hydrant Hero

The St. Louis Park Fire Department asks homeowners and businesses with fire hydrants on or near their property to shovel the snow around the fire hydrant after each snowfall. This small act can save lives! Visit www.hydranthero.org to adopt a hydrant. Choose a hydrant, click on the "Adopt me" link and fill out the registration form — you can even give your hydrant a name! Call 952.924.2171 for more information.

Remember to always shovel sidewalks

For safety and accessibility purposes, it's important that residents remember to shovel sidewalks adjacent to their homes after a snowfall. Snow must be removed the same day if there are 6 or more hours of daylight following the snowfall or by noon the following day. Sidewalks in front of apartments or commercial buildings must be cleared within 4 hours once the snow has stopped falling or by the beginning of business hours the next day. If you have neighbors who are elderly or unable to shovel their own walkways, please consider helping them out.



Before it snows: Keep waterways clear

Leaves and other debris that get into storm drains pollute waterways and negatively impact the health of local plants and wildlife. They can also cause flooding. Here's how to help:

Keep streets clear for street sweepers

If possible, avoid parking on streets during daytime hours. All city streets are swept at least twice a year — in the spring and again in the fall. Fall street sweeping starts in early October and continues until the snow falls. Even though "no parking" signs aren't posted for street sweeping since work is ongoing and contingent on weather conditions, cars parked on the street will still reduce the effectiveness of street sweeping and slow down the process.

Do not rake leaves or blow grass clippings into the street

Excess leaves raked into the street can slow down or damage sweeping equipment and contribute to the pollution of area waterways. It's also against city code. Grass clippings and leaves in the street end up in local water bodies where they decompose and release harmful phosphorous. Visit www.stlouisparkmn.gov/backyard-composting for tips on composting grass and leaves. Yard waste is also collected for pick up by the city's yard waste hauler (see page 7).

Adopt a storm drain

Keeping storm drains clear of obstructions reduces the chance of flooding in the event of heavy rains and cuts down on waterway pollution. St. Louis Park residents are encouraged to adopt a storm drain near them by committing to keep it clear of leaves, trash and other debris. Visit www.adopt-a-drain.org/map to sign up.

Thank you for doing your part to protect local lakes, creeks and rivers!



Last week of yard waste collection is Nov. 27

The last week for yard waste collection is the week of Nov. 27. If there is a significant snowfall before then, yard waste collection will end at that time. If this occurs, updates will be posted online at www.stlouisparkmn.gov/yard-waste. Remember, yard waste must be in your own reusable containers, compostable bags or bundled separate from garbage. It must be set out by 7 a.m. to ensure collection, especially during peak season. It's illegal to throw yard waste in the garbage or to use traditional plastic bags for yard waste. Each bag or bundle should weigh no more than 40 pounds. For more information, visit www.stlouisparkmn.gov/yard-waste.

Free Christmas tree collection Jan. 2 – 19

Christmas trees can be set out for collection on your regular collection day by 7 a.m. during the first three weeks of January for no charge. Residents who set trees out after the free collection period will be charged for bulk pickup. Bagged trees won't be collected. Remove all decorations and make sure your tree is not stuck in ice or snow before collection. For more details, including options for residents without collection service, visit www.stlouisparkmn.gov/garbage-recycling.

Fall is an ideal time of year for tree pruning

Fall is a great time for tree pruning. The absence of leaves allows you to inspect for defects that may be hidden during the growing season. This period also reduces the likelihood of disease transfer from insects. When pruning young trees, focus on developing good structure. Remove tight v-shaped branch unions and prune to keep a central leader. Pruning of mature trees should be done by a professional. Find a licensed tree contractor at www.stlouisparkmn.gov/trees.

Brush drop-off site open until Nov. 19

If you have excess leaves and grass clippings you want to get rid of before your next yard waste collection day, the city's brush drop-off site will be open Saturdays and Sundays through Nov. 19, and Tuesdays through Oct. 24. There is no charge for St. Louis Park residents. A Minnesota ID, driver's license or utility bill is required as proof of residency. Call 952.924.2562 with questions.

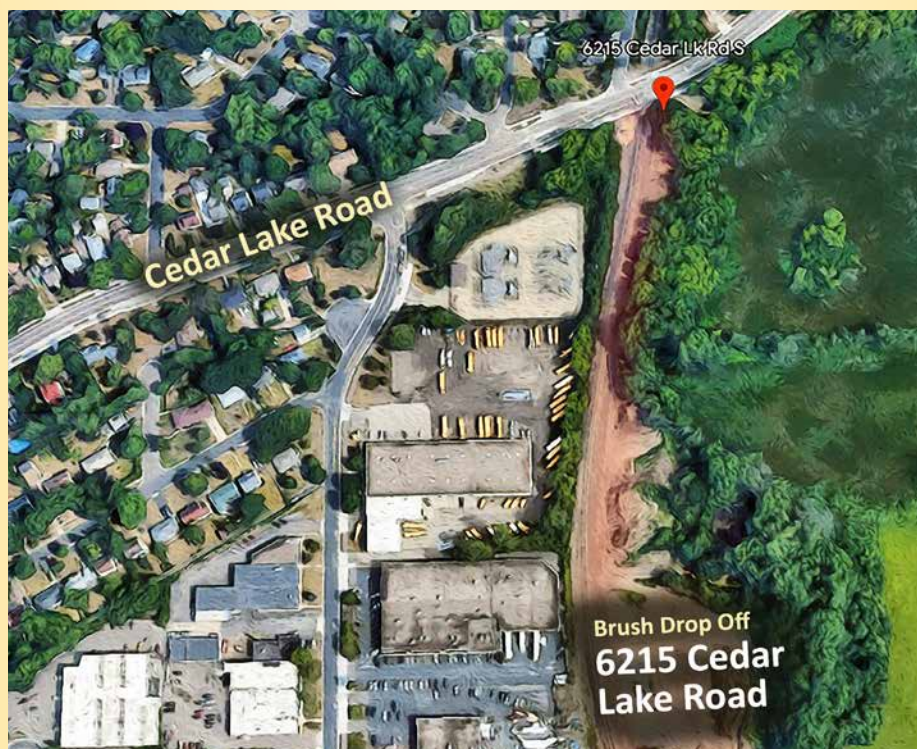
Residents can drop off branches, brush, logs, grass clippings and leaves at the site during the dates and times listed below.

Hours through Oct. 29

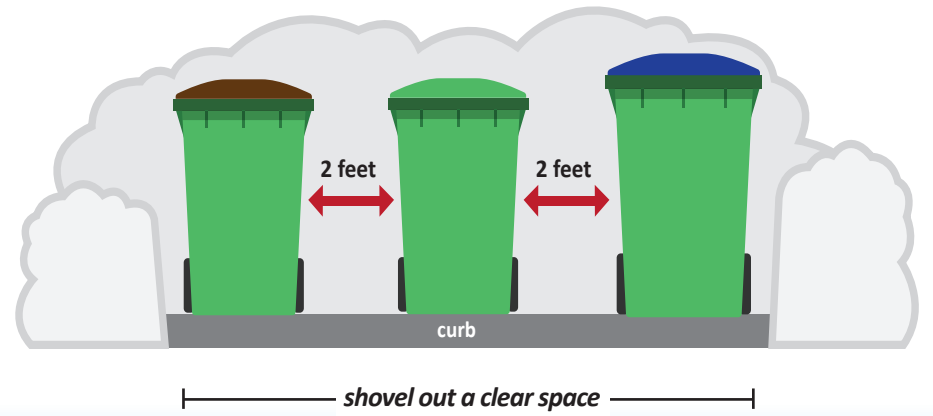
- Saturdays: 7 a.m. – 3 p.m.
- Sundays: noon – 4 p.m.
- Tuesdays: 8 a.m. – 4 p.m.

Hours Nov. 4 – 29

- Saturdays: 7 a.m. – 3 p.m.
- Sundays: noon – 4 p.m.



The drop-off site is located at 6215 Cedar Lake Road with the entrance on the southeast side of the railroad tracks.



Setting out carts during winter months

During winter months, keep the area where you place your carts for collection clear of snow. This helps crews safely access your carts. Carts set on top of snowbanks or buried underneath will not be collected. Please do not place carts in the streets, alleys or sidewalks. They will block snow removal operations.

Setting out your carts for collection

Make sure your carts are out by 7 a.m. as collection times may vary.

- If you have curbside collection, place carts on your driveway or on the boulevard between the street and sidewalk. Ensure carts have at least 2 feet of space between them and surrounding objects.
- If you have alley collection, place carts on your property, driveway or beside your garage next to the alley. The 2-foot spacing noted above for curbside collection is not required for alleys.



Know your recycling day

For your convenience, the next four months of the recycling schedule are provided below. Visit www.stlouisparkmn.gov/recycling to download a yearly calendar, find your collection day or sign up for email reminders.

- If your normal service falls on or after a holiday, you'll receive service one day later.
- Missed collection? Report a missed pickup of garbage and recycling, organics or yard waste within two calendar days of your collection day.

Garbage and recycling: 952.226.6457, SLP@buckinghamcompanies.com
Organics: 952.941.5174, SLP@republicservices.com
Yard waste: 612.405.9579, SLP@wastecountainersystems.com

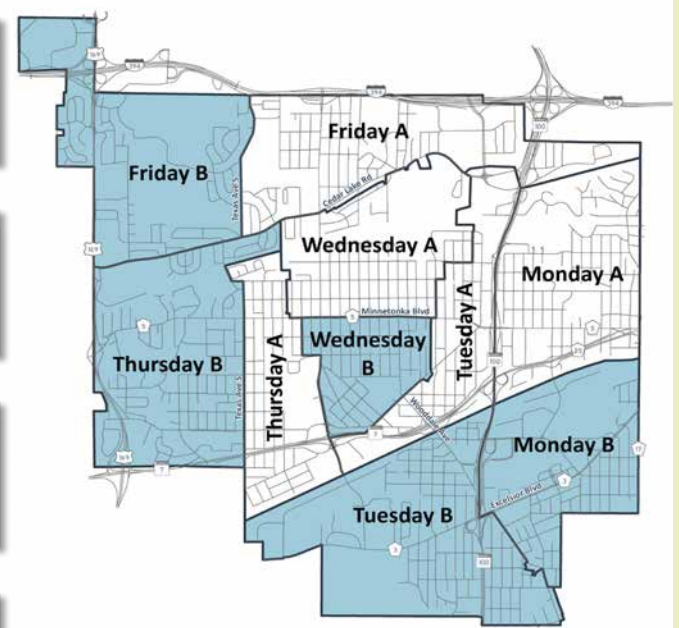
- This calendar applies only to properties with city-provided recycling. Multifamily buildings are required to offer recycling to their tenants. Check with your building management if you have questions. If your building doesn't have recycling, email recycling@stlouisparkmn.gov.

November 2023						
Su	M	Tu	W	Th	F	Sa
			1	2	3	4
5	6	7	8	9	10	11
12	13	14	15	16	17	18
19	20	21	22	23	24	25
26	27	28	29	30		

December 2023						
Su	M	Tu	W	Th	F	Sa
					1	2
3	4	5	6	7	8	9
10	11	12	13	14	15	16
17	18	19	20	21	22	23
24	25	26	27	28	29	30
31						

January 2024						
Su	M	Tu	W	Th	F	Sa
	1	2	3	4	5	6
7	8	9	10	11	12	13
14	15	16	17	18	19	20
21	22	23	24	25	26	27
28	29	30	31			

February 2024						
Su	M	Tu	W	Th	F	Sa
					1	2
3	4	5	6	7	8	9
10	11	12	13	14	15	16
17	18	19	20	21	22	23
24	25	26	27	28	29	



WEEK A WEEK B HOLIDAY

Collections are delayed one day all week after holidays that fall on a week day. Collections are not delayed for holidays that fall on weekends.

Upcoming event highlights

Be The Light Winter Solstice Walk

ALL AGES

Westwood Hills Nature Center, 8300 W. Franklin Ave.

Join us on the shortest day of the year to remember that many in our community aren't able to "see the light" because of struggles with mental health or difficult situations. Follow the luminary walk through the forest guided by visual messages from the community. Light a candle in honor or memory of someone who struggles with or struggled with mental health. Gather around a fire in the glowing winter light. To share the light, create a luminary with your own message to take home and light your neighborhood. Register at www.stlouisparkmn.gov/rec-registration.

DAY	DATE+TIME
Th	Dec. 21, 6:30 – 8:30 p.m.
FEE	Free; registration required
Registration deadline: when program is full	



42ND ANNUAL HALLOWEEN PARTY

ALL AGES

CHILDREN 2+ MUST PAY AND BE ACCOMPANIED BY A PAID ADULT

Westwood Hills Nature Center, 8300 W. Franklin Ave.

Join us for this family-friendly fall tradition! Come in costumes and enjoy a variety of indoor and outdoor activities. Boo-gie down to some Halloween tunes. Play carnival style games and trick-or-treat with friendly animal characters on Mother Nature's Trail. Round out the evening with a puppet show and refreshments. Register at www.stlouisparkmn.gov/rec-registration. Consider donating carved pumpkins to decorate the trails at this event. Pumpkins can be dropped off at the nature center on Thursday, Oct. 19, from 8 a.m. – 7 p.m.

DAYS	DATES+TIME
F	Oct. 20, 6:30 – 9 p.m.
Sa	Oct. 21, 6:30 – 9 p.m.
FEE	After Oct. 11: \$12 per person (resident) / \$13 (non-resident) Households of four or more will receive a 20% discount for the fourth person and each person thereafter.
Registration deadline: 4 p.m. on the day of the event or when full	

When will the Holiday Train visit St. Louis Park?

Visit www.cpr.ca/en/holiday-train/united-states for schedule announcement. The train generally stops in the city mid-December.



Drug take-back event

The St. Louis Park Police Department will host a prescription and over-the-counter drug take-back event Saturday, Oct. 28, 10 a.m. – 2 p.m., at the police department, 3015 Raleigh Ave. S. If you can't attend, a medicine drop box is available 24/7 in the police department lobby. You can also find medicine disposal bags at Fire Station 1, 3750 Wooddale Ave. S., and city hall.



U.G.L.Y. SWEATER DASH

Dec. 3 • Race begins at 5:30 p.m.

Louisiana Oaks Park, 3520 Louisiana Ave. S. • Register: www.stlouisparkmn.gov/rec-registration



Other upcoming events and activities: Howl-O-Ween, Oct. 15; Walk the Park, Oct. 15, Nov. 11 and Dec. 9; Goblins on Ice, Oct. 27; Skate School Fall Showcase, Nov. 11; Turkey Bingo and Turkeys on Ice, Nov. 22; Small Business Saturday, Nov. 25; Disco Ball Ice Skating, Dec. 15; New Year's Eve at the ROC, Dec. 31; Winter Fun Day, Jan. 27; and more!

Visit www.stlouisparkmn.gov/events or scan the QR code for more details on city events and activities or to sign up for updates.