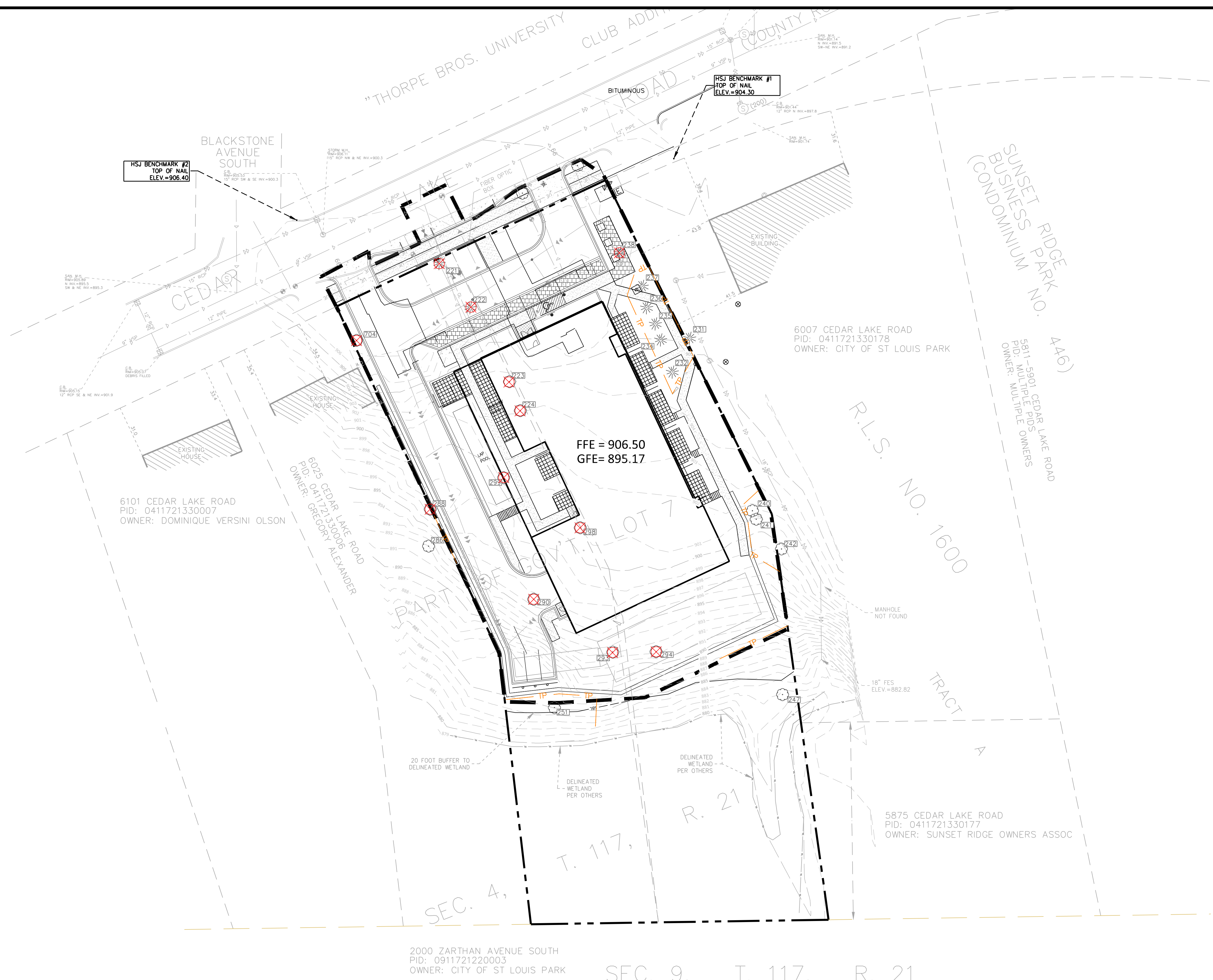


24.15 (LMS TECH) | THOMAS KEELEY | 1/8/2024 12:29:24 PM
 \PROJECTS\52710\CAD\SHEETS\52710-L1-TREE DWG\L1 TREE PRESERVATION



LEGEND

PROPERTY LIMIT	PROPOSED	EXISTING	STANDARD DUTY ASPHALT PAVING
CURB & GUTTER	---	---	---
EASEMENT	---	---	CONCRETE PAVING
BUILDING	---	---	CONCRETE SIDEWALK
RETAINING WALL	---	---	
WETLAND LIMITS	---	---	
TREELINE	---	---	
LANDSCAPE EDGING	---	---	
STORM SEWER	---	---	
SANITARY SEWER	---	---	
FORCEMAIN (SAN.)	---	---	
WATERMAIN	---	---	
YARDDRAIN	---	---	
LIMITS OF DISTURBANCE	---	---	
TREE PROTECTION FENCE	---	---	
TREE TO BE REMOVED	---	---	
SIGN	---	---	
PIPE BOLLARD	---	---	
RIPRAP	---	---	

NORTH
 0 30 60
 SCALE IN FEET

SAINT LOUIS PARK TREE PRESERVATION CODE

Significant tree means any tree, with the exception of Salix (Willow), Boxelder, Siberian Elm, and Black Locust, is considered to be significant under the landscaping section of the zoning ordinance if it is at least five caliper inches for deciduous trees and six caliper inches for conifers. Aspen, Cottonwood, or Silver Maple are considered significant if they are at least 12 inches in diameter at 4.5 from the ground (Ord. No. 2325-07,5-7-07; Ord. No. 2449-13, 11-15-2013)

CALCULATIONS
 $((A/B-0.20) \times C) \times A = D$ $((131/259)-0.20) \times 1.5 \times 131 = 60$ CALIPER IN. (24 TREES)

A = Total diameter inches of significant trees lost as a result of land alteration or removal.
 B = Total diameter inches of significant trees situated on the land.
 C = Tree replacement constant (1.5).
 D = Replacement trees (number of caliper inches)

TREE INVENTORY

Tag	DBH	Species	Status	Condition
221	12	Blue spruce	Remove	Very Good
222	14	Blue spruce	Remove	Very Good
223	8	American elm	Remove	Good
224	12	Paper birch	Remove	Very Good
231	11	White spruce	Off-Site_PRE	Good
232	6	White pine	Preserve	Fair
234	7	Balsam Fir	Preserve	Good
235	7	Red pine	Preserve	Good
236	16	White pine	Preserve	Excellent
237	10	Red pine	Preserve	Very Good
238	6	White cedar	Remove	Very Good
240	6	American elm	Preserve	Fair
241	7	American elm	Preserve	Fair
242	16	American elm	Off-Site-PR	Good
247	40	Cottonwood	Preserve	Excellent
251	25	American elm	Preserve	Fair
286	14	Cottonwood	Off-Site	Fair
288	10	American elm	Off-Site-RMV	Fair
290	16	American elm	Remove	Fair
293	9	American elm	Remove	Very Good
294	31	American elm	Remove	Poor
298	13	Paper birch	Remove	Good
299	14	Catalpa	Remove	Very Good
704	17	American elm	Remove	Excellent

NO	DATE	BY	CKD	APPR	COMMENT
1.	01/04/2023	TK	GA	MA	CITY SUBMITTAL

I hereby certify that this plan, specification, or report was prepared by me or under my direct supervision and that I am a duly Licensed Landscape Architect under the laws of the State of Minnesota.

Print Name: _____

 Date _____ License # _____

PRELIMINARY
 DESIGN REVIEW
 PERMIT SUBMITTAL
 CONSTRUCTION DOCUMENTS

DRAWN BY
 DESIGNED BY
 CHECKED BY
 PROJECT NO. 52710

Sambatek
 www.sambatek.com
 Engineering | Surveying | Planning | Environmental

TREE PRESERVATION
 CEDAR HEIGHTS ESTATES, LLC.
 CEDAR HEIGHTS APARTMENTS
 ST. LOUIS PARK, MN

SHEET
L1
 ## OF ##
 REV. #