

Agency Approval

Registration

Name: John Pfluger
License No.: 20926

I hereby certify that this plan, specification, or report was prepared by me or under my direct supervision and that I am a duly Licensed Architect under the laws of the state of Minnesota.

Signed:

Revisions		
No.	Date	Description

Project Information

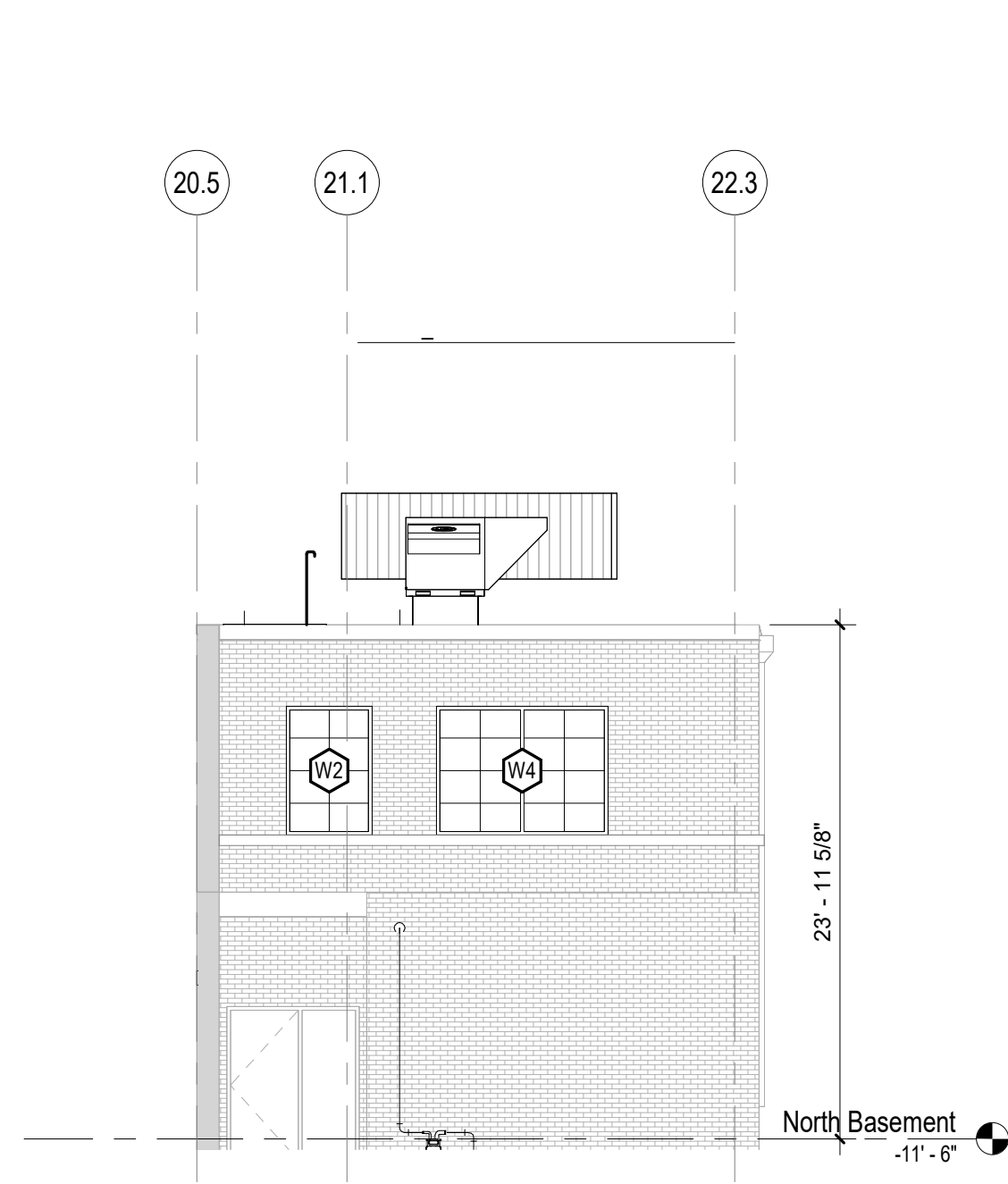
Phase:	CD	Date:	01/02/2024
Project No.:	22-0028	PIC / A/C:	PL

ST. LOUIS PARK CENTRAL
COMMUNITY CENTER, GYM AND
POOL REMODEL

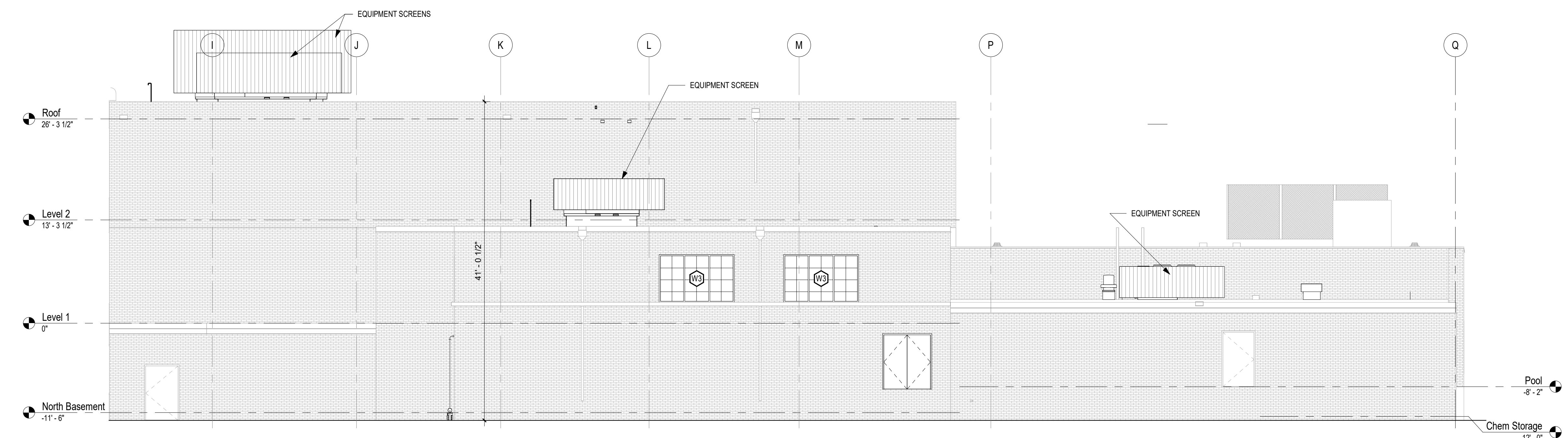
Sheet Title
Exterior elevations

Sheet Number Current Revision

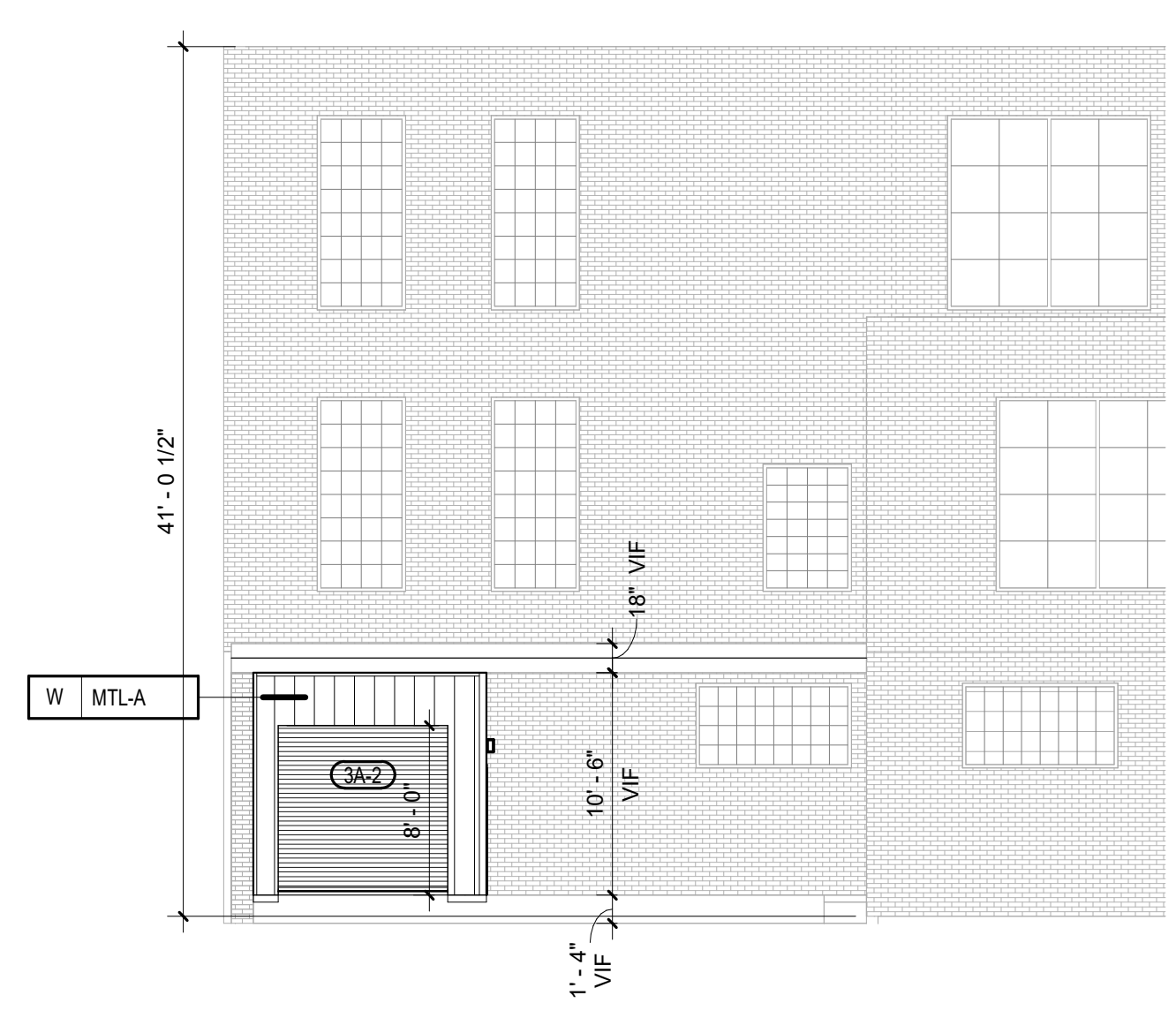
A0.03



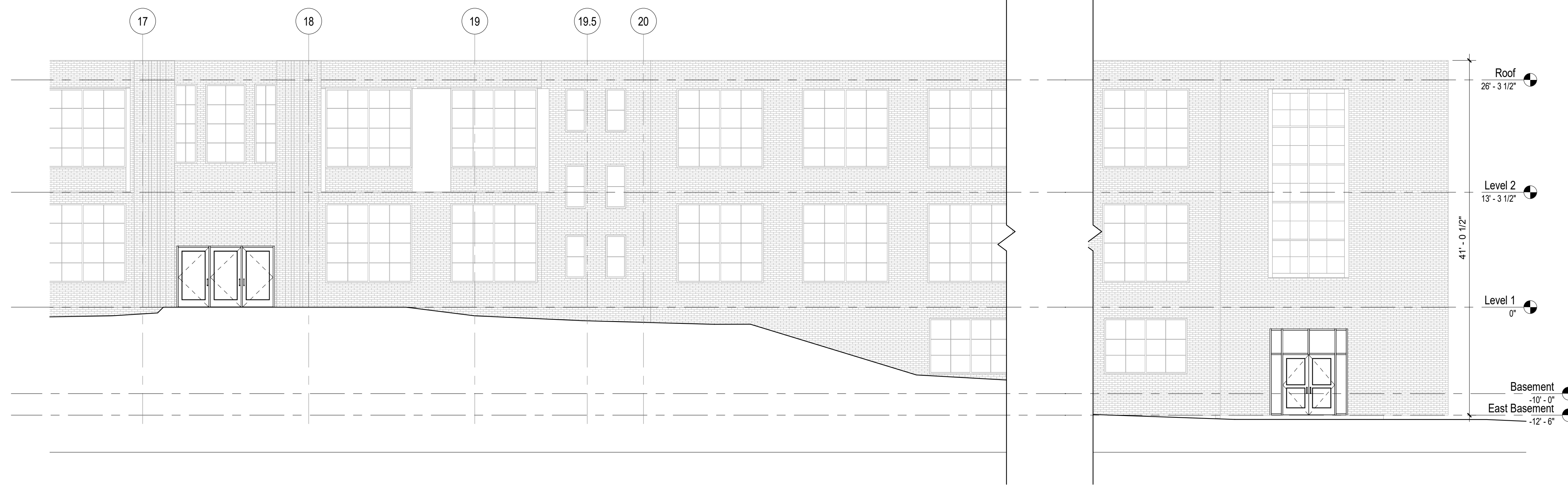
1 ANNES GYM - SOUTH ELEVATION_CUP
A0.03 1/8" = 1'-0"



2 ANNEX GYM - WEST ELEVATION_CUP
A0.03 1/8" = 1'-0"



3 Partial North Elevation - Loading Dock_CUP
A0.03 1/8" = 1'-0"



4 Partial South Elevation_CUP
A0.03 1/8" = 1'-0"