

**City Landscape Requirements:**

Parking Area Expansion: Landscape Requirements

**Perimeter Tree Calculation:**

- (1) Tree per 50 lineal feet of the site perimeter  
512 / 50 X 1 = 10 Trees
- (6) Shrubs per 50 lineal feet of site perimeter:  
512 / 50 X 6 = 60 Shrubs

Trees Provided:  
Overstory: 8  
Coniferous: 5  
Ornamental: 4  
Shrubs Provided: 92

**Parking Lot Landscaping:**

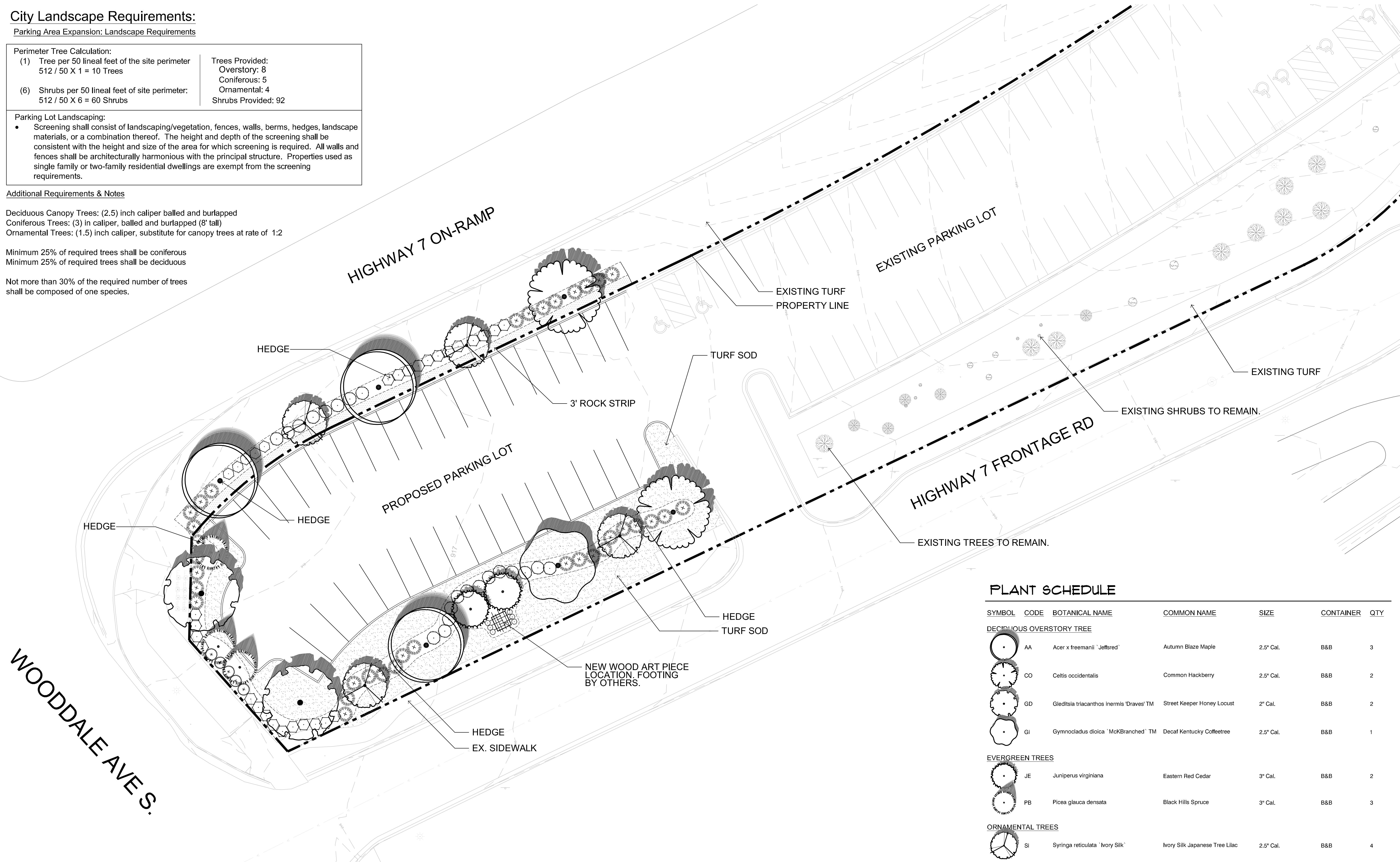
- Screening shall consist of landscaping/vegetation, fences, walls, berms, hedges, landscape materials, or a combination thereof. The height and depth of the screening shall be consistent with the height and size of the area for which screening is required. All walls and fences shall be architecturally harmonious with the principal structure. Properties used as single family or two-family residential dwellings are exempt from the screening requirements.

**Additional Requirements & Notes**

Deciduous Canopy Trees: (2.5) inch caliper balled and burlapped  
Coniferous Trees: (3) in caliper, balled and burlapped (8' tall)  
Ornamental Trees: (1.5) inch caliper, substitute for canopy trees at rate of 1:2

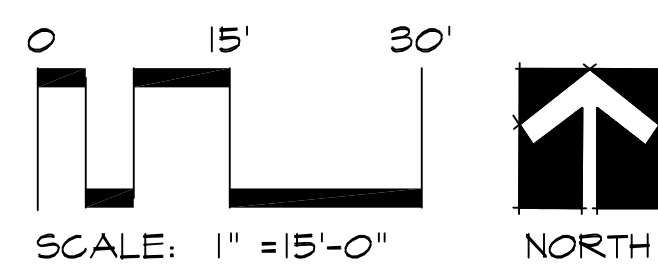
Minimum 25% of required trees shall be coniferous  
Minimum 25% of required trees shall be deciduous

Not more than 30% of the required number of trees shall be composed of one species.



**Landscape Material Legend:**

- Proposed Turf Sod
- Proposed Landscape Edging
- Proposed Rock Mulch



**General Notes:**

1. Refer to Sheet L104+L105 for Landscape Details, Notes, and Schedules
2. See Civil Engineer's plans for site plan layout and dimensions.
3. Contractor to coordinate all work in the city right-of-way with Hennepin County & City of St. Louis Park Public Works Departments.
4. Protect existing trees to remain from damage during construction.
5. Place a minimum of 6" topsoil or slope dressing on all areas disturbed by construction, including right-of-way boulevards, unless specified otherwise.

**PLANT SCHEDULE**

SYMBOL	CODE	BOTANICAL NAME	COMMON NAME	SIZE	CONTAINER	QTY
<b>DECIDUOUS OVERSTORY TREE</b>						
	AA	Acer x freemanii 'Jeffred'	Autumn Blaze Maple	2.5" Cal.	B&B	3
	CO	Celtis occidentalis	Common Hackberry	2.5" Cal.	B&B	2
	GD	Gleditsia triacanthos inermis 'Draves' TM	Street Keeper Honey Locust	2" Cal.	B&B	2
	GI	Gymnocladia dioica 'McKBranded' TM	Decaf Kentucky Coffeetree	2.5" Cal.	B&B	1
<b>EVERGREEN TREES</b>						
	JE	Juniperus virginiana	Eastern Red Cedar	3" Cal.	B&B	2
	PB	Picea glauca densata	Black Hills Spruce	3" Cal.	B&B	3
<b>ORNAMENTAL TREES</b>						
	SI	Syringa reticulata 'Ivory Silk'	Ivory Silk Japanese Tree Lilac	2.5" Cal.	B&B	4
<b>SHRUBS</b>						
	Am	Aronia melanocarpa 'Morton' TM	Iroquois Beauty Black Chokeberry	5 gal. (Min. 24" Hgt.)	Pot	5
	Cr	Cornus alba 'Regzam'	Red Gnome Dogwood	5 gal. (Min. 24" Hgt.)	Pot	26
	Ha	Hydrangea arborescens 'Annabelle'	Annabelle Hydrangea	5 gal. (Min. 24" Hgt.)	Pot	5
	Jf	Juniperus chinensis 'Sea Green'	Sea Green Juniper	5 gal. (Min. 24" Hgt.)	Pot	35
	Vb	Viburnum trilobum 'Bailey Compact'	Compact American Cranberry Bush	5 gal. (Min. 24" Hgt.)	Pot	21
<b>GRASSES</b>						
	Ck	Calamagrostis x acutiflora 'Karl Foerster'	Feather Reed Grass	1 gal.	Pot	6



1301 American Blvd. E  
Suite 100  
Bloomington, MN 55425  
tel: (612) 879-6000  
fax: (612) 879-6666  
www.kaaswilson.com

Civil Engineering:  
BKM Engineers  
6120 Earle Brown Dr., Suite 700  
Minneapolis, MN 55340  
Phone: (763) 843-0420

Landscape Architect:  
CALYX DESIGN GROUP  
475 Cleveland Ave. N. Suite 101A  
Saint Paul, MN 55104  
(651) 788-9018

**Zelia on Seven Apartments**  
St. Louis Park, MN

Prepared for:  
Bigos Management  
8325 Wayzata Boulevard  
Golden Valley, MN 55426

Project Number	23163
Date	01/22/2024
Drawn By	HL
Checked By	BH

I hereby certify that this plan, specification, or report was prepared by me or under my direct supervision and that I am a duly Licensed Landscape Architect under the laws of the State of Minnesota.  
Benjamin D. ...  
Typed Name  
Signature  
Registration Number  
Date

Date	Revision	Rev. No.

**PARKING EXPANSION LANDSCAPE PLAN**

**L101**



Copyright Kaas Wilson Architects

PRELIMINARY: NOT FOR CONSTRUCTION

PRELIMINARY