



1301 American Blvd E.
Suite 100
Bloomington, MN 55425
tel: (612) 879-6000
www.kaaswilson.com

Consultant 1
BKBM
ENGINEERS
© 2024 BKBM Engineers
Julian Kropp Salvo & McFarlin, Inc.
All rights reserved.
This document is the property of BKBM Engineers and may not be used or copied without prior written consent.
BKBM Project No. 24148.5

Project:
Zelia on Seven
5725 Minnesota 7 Services Road
St Louis Park, MN 55416

Owner:
Project Number 24148.5
Date 22 January, 2024

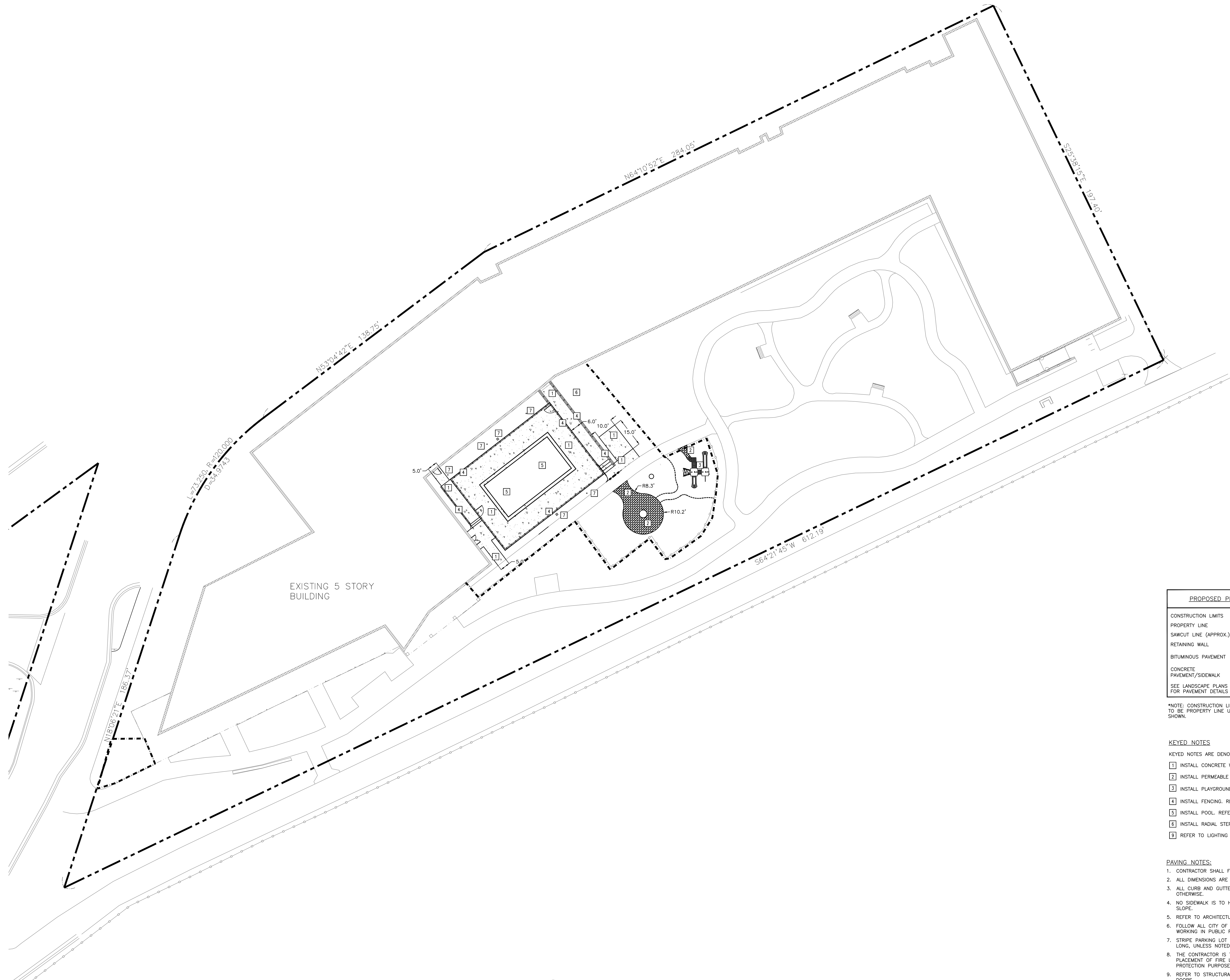
NOT FOR CONSTRUCTION

Date

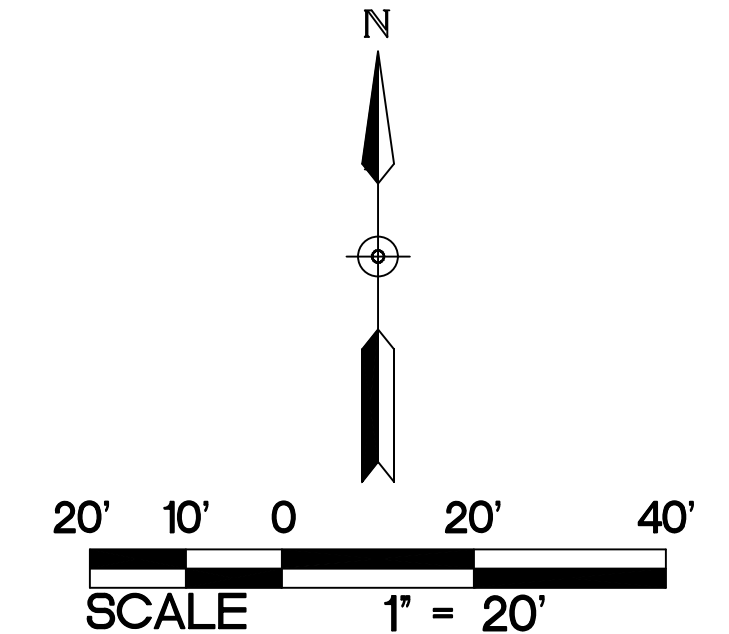
Revision

Rev. No.

PAVING AND GEOMETRIC PLAN
1" = 20"
C300



EXISTING 5 STORY BUILDING



PROPOSED PLAN SYMBOLS	
CONSTRUCTION LIMITS	---
PROPERTY LINE	----
SAWCUT LINE (APPROX.)	- - - -
RETAINING WALL	⊖⊖⊖⊖⊖⊖
BITUMINOUS PAVEMENT	[Stippled pattern]
CONCRETE PAVEMENT/SIDEWALK	[Grid pattern]
SEE LANDSCAPE PLANS FOR PAVEMENT DETAILS	[Cross-hatched pattern]

ABBREVIATIONS	
BLDG	Building
BM	Benchmark
CONC	Concrete
ELEV	Elevation
EX	Existing
FFE	Finished Floor Elevation
LFE	Lower Floor Elevation
MAX	Maximum
MIN	Minimum
R	Radius
TYP.	Typical
MN MUTCD	Minnesota Manual on Uniform Traffic Control Devices

*NOTE: CONSTRUCTION LIMITS ARE ANTICIPATED TO BE PROPERTY LINE UNLESS OTHERWISE SHOWN.

- KEYED NOTES**
KEYED NOTES ARE DENOTED BY [] ON PLAN.
- [1] INSTALL CONCRETE WALK. REFER TO DETAIL 8/C400.
 - [2] INSTALL PERMEABLE PAVERS. REFER TO LANDSCAPE PLANS AND SPECIFICATIONS.
 - [3] INSTALL PLAYGROUND EQUIPMENT. REFER TO LANDSCAPING PLANS AND DETAILS.
 - [4] INSTALL FENCING. REFER TO LANDSCAPING PLANS FOR EXACT AND DETAILS.
 - [5] INSTALL POOL. REFER TO LANDSCAPING PLANS AND DETAILS.
 - [6] INSTALL RADIAL STEPS. REFER TO LANDSCAPING PLANS AND DETAILS.
 - [9] REFER TO LIGHTING PLANS FOR DETAILS AND SPECIFICATIONS.

- PAVING NOTES:**
- 1. CONTRACTOR SHALL FOLLOW ALL CITY OF ST. LOUIS PARK STANDARDS AND SPECIFICATIONS.
 - 2. ALL DIMENSIONS ARE TO FACE OF CURB UNLESS NOTED OTHERWISE.
 - 3. ALL CURB AND GUTTER IS TO BE B612 CONCRETE CURB AND GUTTER UNLESS NOTED OTHERWISE.
 - 4. NO SIDEWALK IS TO HAVE MORE THAN A 2% CROSS SLOPE OR MORE THAN A 5% LONGITUDINAL SLOPE.
 - 5. REFER TO ARCHITECTURAL PLANS FOR PROPOSED BUILDING LAYOUT.
 - 6. FOLLOW ALL CITY OF ST. LOUIS PARK RULES, REGULATIONS, AND SPECIFICATIONS WHEN WORKING IN PUBLIC RIGHT OF WAY.
 - 7. STRIPE PARKING LOT AS SHOWN. ALL PARKING STALLS ARE TO BE 8.5 FEET WIDE BY 18 FEET LONG, UNLESS NOTED OTHERWISE.
 - 8. THE CONTRACTOR IS TO CONTACT THE CITY OF ST. LOUIS PARK FIRE MARSHALL FOR THE EXACT PLACEMENT OF FIRE LANES, YELLOW-PAINTED CURBING, AND NO PARKING AREAS FOR FIRE PROTECTION PURPOSES.
 - 9. REFER TO STRUCTURAL PLANS FOR STOOP DETAILS. ALL WALKS ARE TO BE CENTERED ON THE DOORS.
 - 10. INSTALL APPROPRIATE EXPANSION MATERIAL WHERE CONCRETE IS ADJACENT TO BUILDING FACE.
 - 11. ALL EXPANSION AND ISOLATION JOINTS SHALL BE SEALED PER SPECIFICATIONS.
 - 12. MATCH NEW PAVEMENT, CURB AND GUTTER, AND SIDEWALK INTO EXISTING. NO ABRUPT GRADE TRANSITIONS OR PONDING OF WATER WILL BE ALLOWED.
 - 13. SAWCUT EXISTING PAVEMENT, SIDEWALK, AND CURB AND GUTTER TO NEAREST JOINT. COORDINATE REMOVAL LIMITS WITH SITE DEMOLITION CONTRACTOR AND CONSTRUCTION MANAGER.

1 PAVING AND GEOMETRIC PLAN
C300 1" = 20'