



1301 American Blvd E.
Suite 100
Bloomington, MN 55425
tel: (612) 879-6000
www.kaaswilson.com

Consultant 1

BKBM
ENGINEERS
© 2024 BKBM Engineers
Julian Kropp Salvo & McFarlin, Inc.
All rights reserved.
This document is the property of BKBM Engineers and may not be used or copied without prior written consent.
BKBM Project No. 24148.5

Project:
Zelia on Seven
5725 Minnesota 7 Services Road
St Louis Park, MN 55416

Owner:

Project Number 24148.5

Date 22 January, 2024

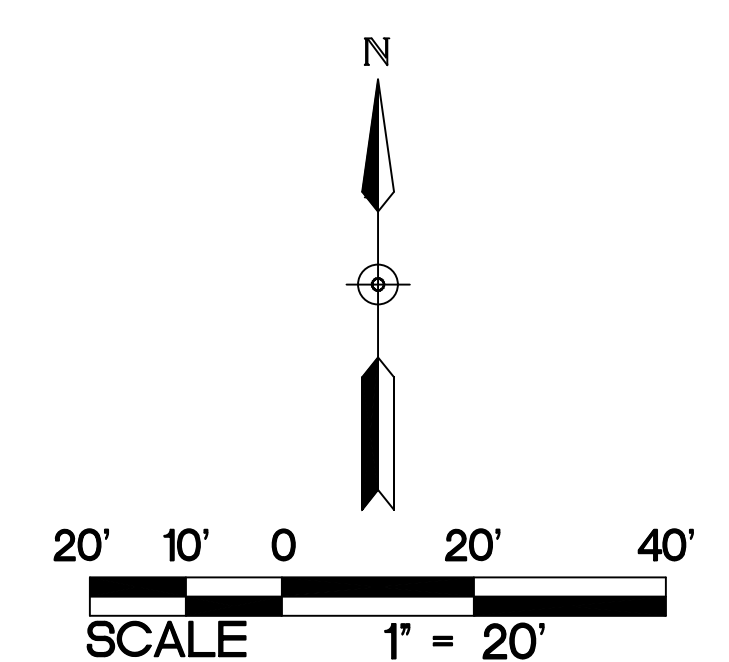
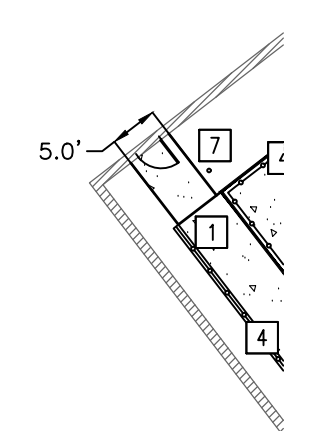
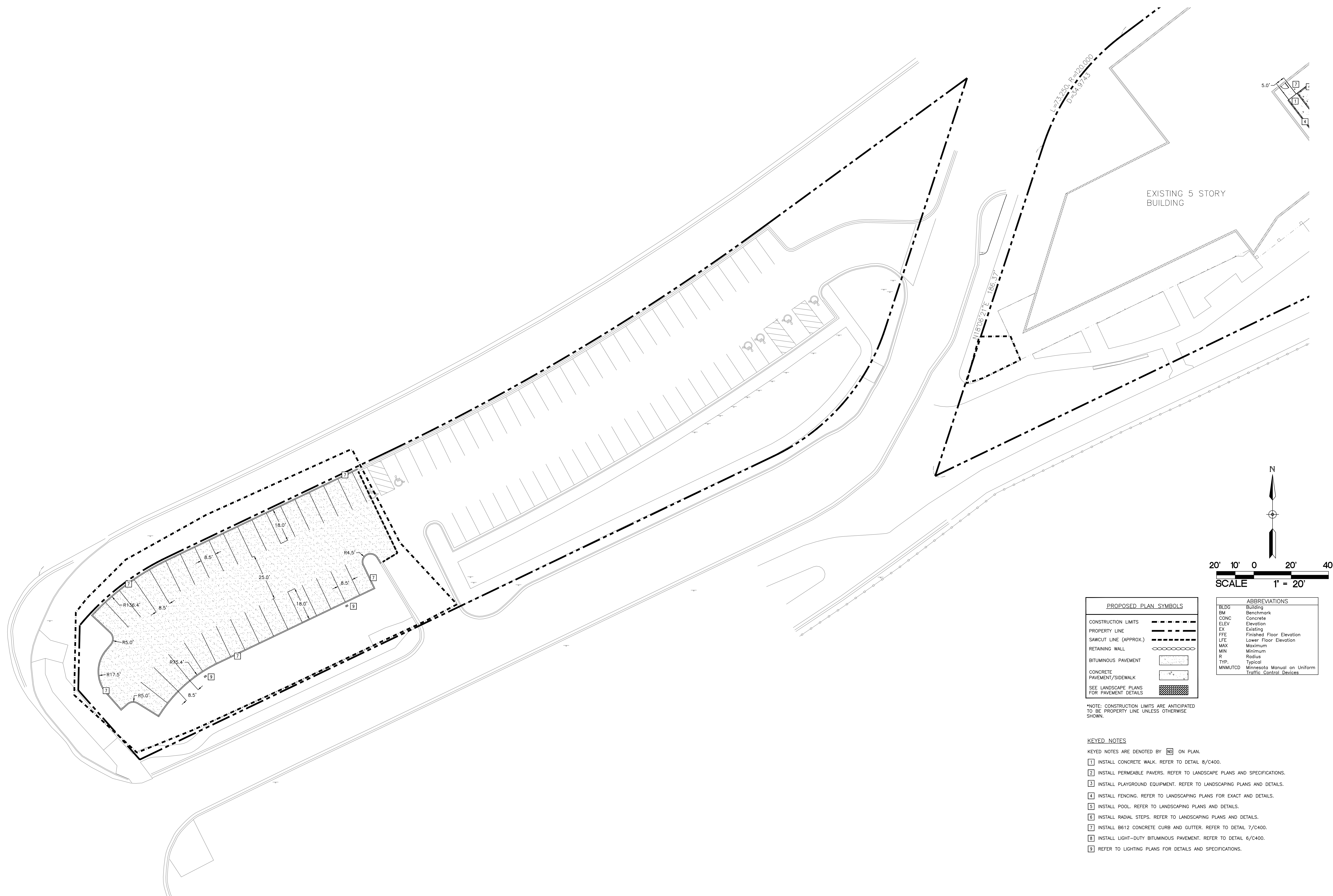
Date

Revision

Rev. No.

PAVING AND
GEOMETRIC
PLAN
1" = 20"

C301



PROPOSED PLAN SYMBOLS	
CONSTRUCTION LIMITS	---
PROPERTY LINE	----
SAWCUT LINE (APPROX.)	- - - -
RETAINING WALL	⊖⊖⊖⊖
BITUMINOUS PAVEMENT	[Stippled pattern]
CONCRETE PAVEMENT/SIDEWALK	[Grid pattern]
SEE LANDSCAPE PLANS FOR PAVEMENT DETAILS	[Cross-hatched pattern]

ABBREVIATIONS	
BLDG	Building
BM	Benchmark
CONC	Concrete
ELEV	Elevation
EX	Existing
FFE	Finished Floor Elevation
LFE	Lower Floor Elevation
MAX	Maximum
MIN	Minimum
R	Radius
TYP.	Typical
MN MUTCD	Minnesota Manual on Uniform Traffic Control Devices

*NOTE: CONSTRUCTION LIMITS ARE ANTICIPATED TO BE PROPERTY LINE UNLESS OTHERWISE SHOWN.

- KEYED NOTES**
KEYED NOTES ARE DENOTED BY [] ON PLAN.
- [1] INSTALL CONCRETE WALK. REFER TO DETAIL 8/C400.
 - [2] INSTALL PERMEABLE PAVERS. REFER TO LANDSCAPE PLANS AND SPECIFICATIONS.
 - [3] INSTALL PLAYGROUND EQUIPMENT. REFER TO LANDSCAPING PLANS AND DETAILS.
 - [4] INSTALL FENCING. REFER TO LANDSCAPING PLANS FOR EXACT AND DETAILS.
 - [5] INSTALL POOL. REFER TO LANDSCAPING PLANS AND DETAILS.
 - [6] INSTALL RADIAL STEPS. REFER TO LANDSCAPING PLANS AND DETAILS.
 - [7] INSTALL B612 CONCRETE CURB AND GUTTER. REFER TO DETAIL 7/C400.
 - [8] INSTALL LIGHT-DUTY BITUMINOUS PAVEMENT. REFER TO DETAIL 6/C400.
 - [9] REFER TO LIGHTING PLANS FOR DETAILS AND SPECIFICATIONS.

1 PAVING AND GEOMETRIC PLAN
C301 1" = 20'