

Tree preservation policy changes

Katelyn Champoux, associate planner

Sean Walther, planning manager / deputy cd director

Michael Bahe, natural resources manager

Emily Ziring, sustainability manager

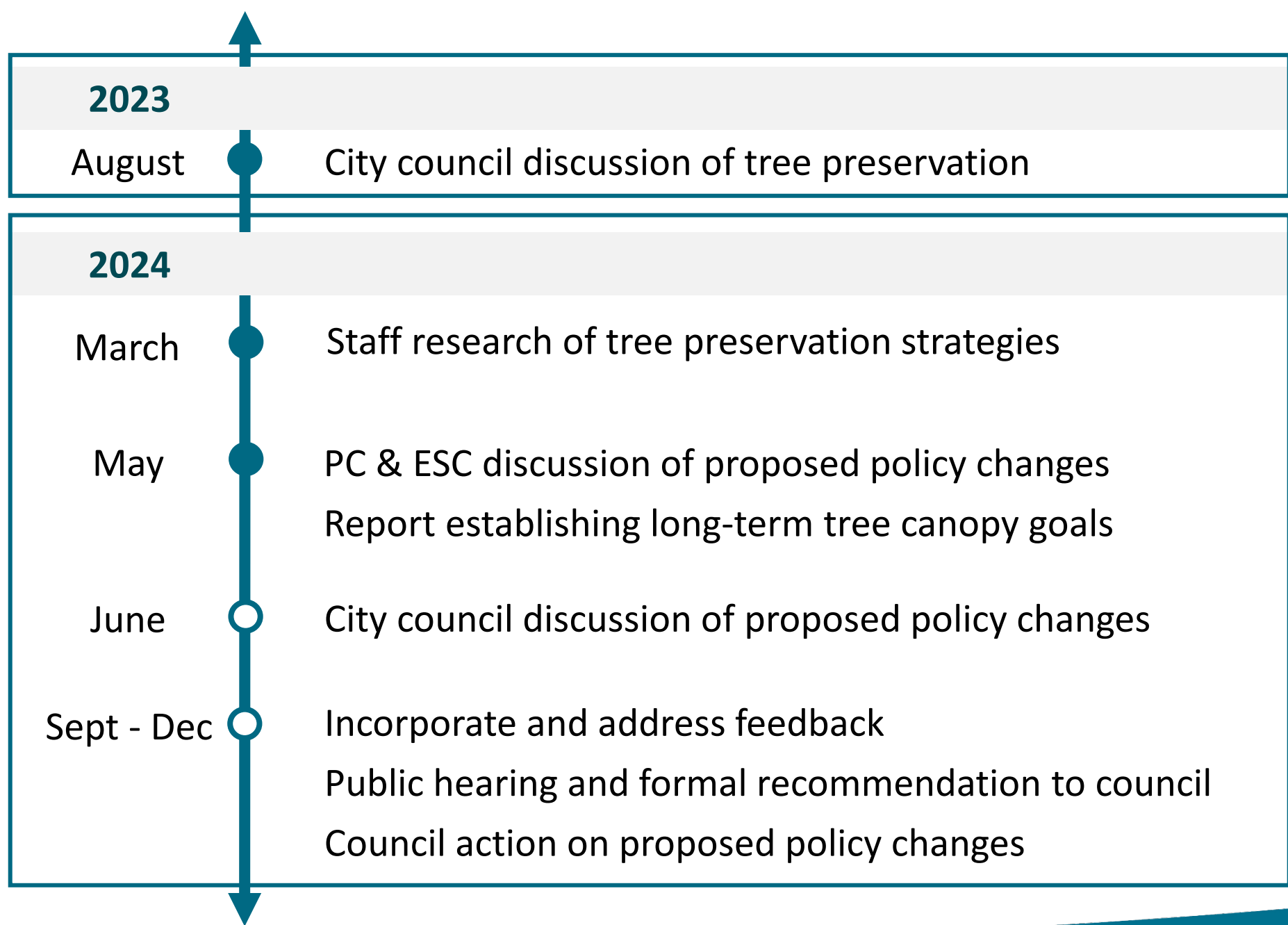
Overview

- Recap of previous conversations
- Tree canopy existing conditions
- Existing tree preservation strategies
- Proposed policy improvements

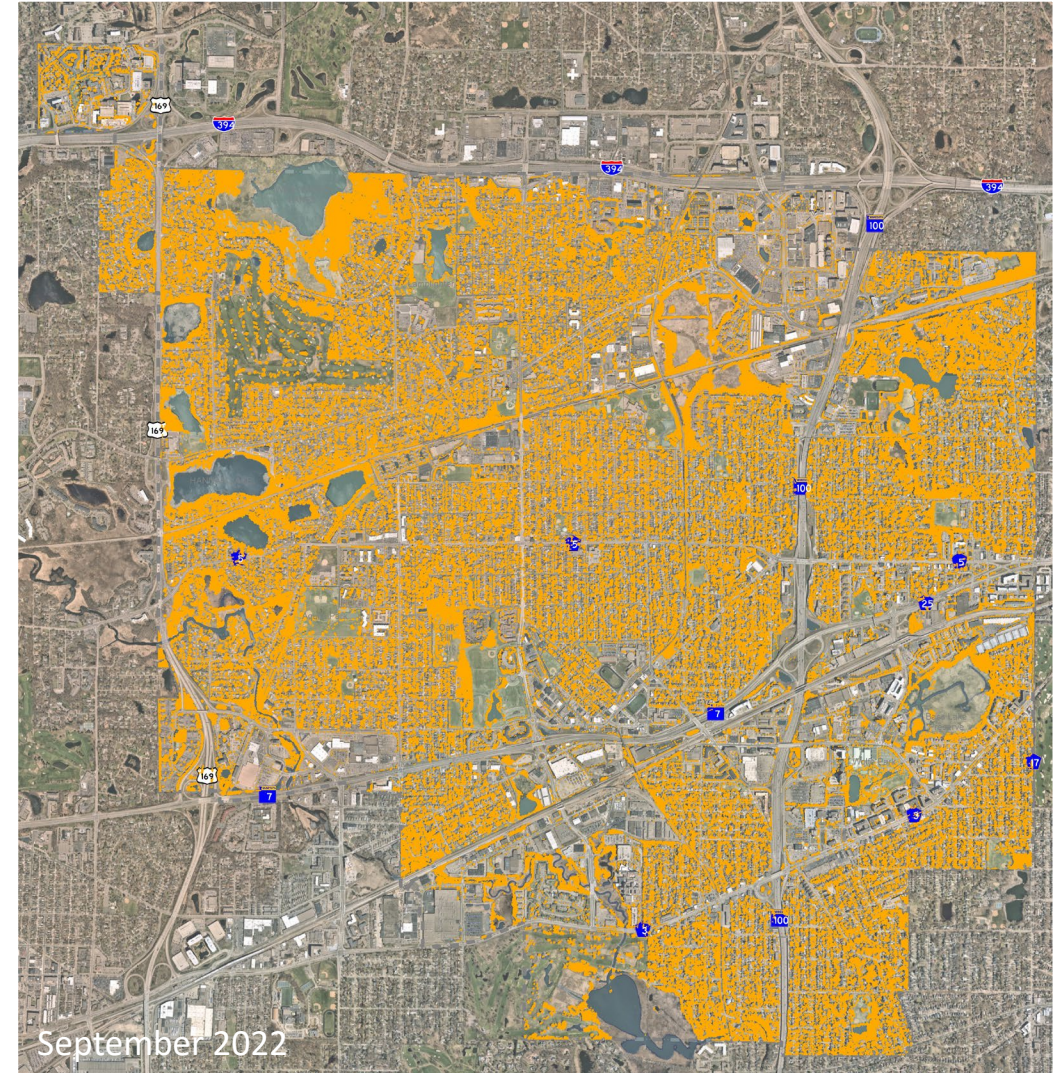
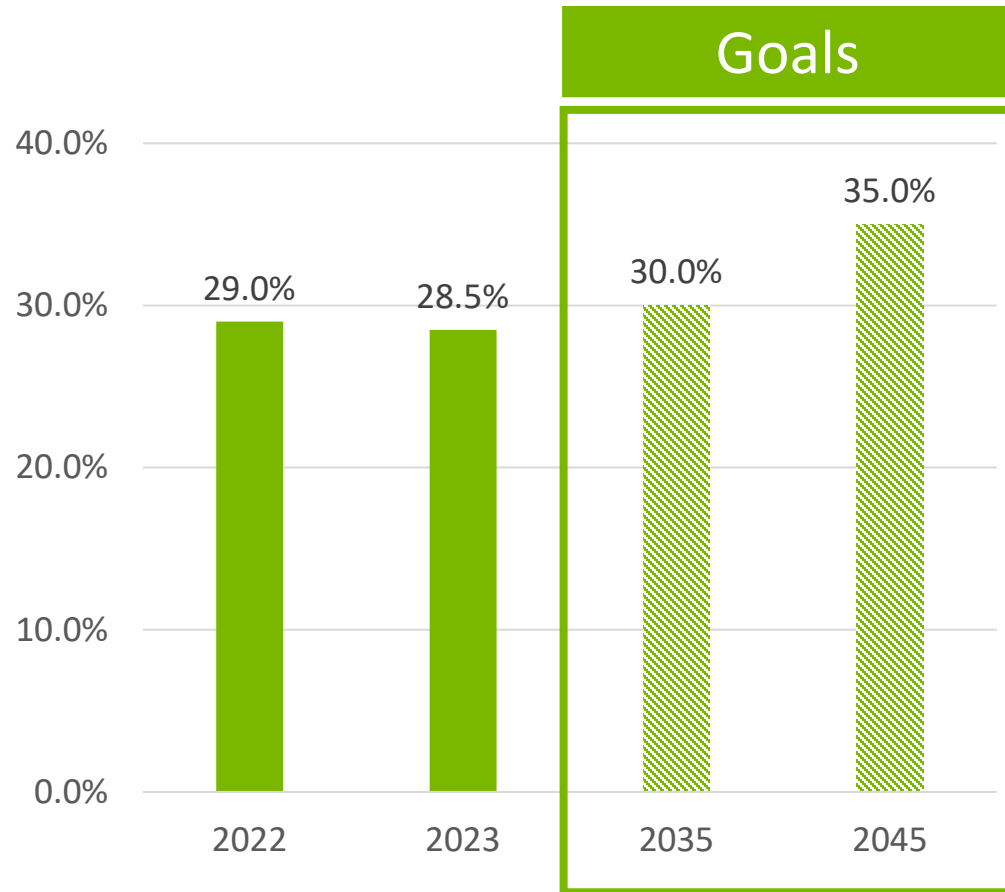
Policy question

Does the city council support the proposed amendments to the tree protection policy in city code?

Setting the stage



Existing tree canopy



Existing tree canopy strategies

- Annual Tree Sale
- Shade SLP and full-service planting program
- Depave SLP
- Free tree health consultations and Shade SLP+
- Tree treatment subsidies and reimbursements
- Tree protection policies



Existing policy

- ✓ Applies to commercial properties and new subdivisions
- ✓ Defines significant trees
- ✓ Sets a replacement rate of 1.5 for significant trees
- ✗ Defines heritage trees
- ✗ Sets a replacement rate of 2.0 for heritage trees
- ✗ Offers heritage tree preservation credits

Proposed policy

- ✓ Applies to commercial properties and new subdivisions
- ✓ Defines significant trees
- ✓ Sets a replacement rate of 1.5 for significant trees
- ✓ Defines heritage trees
- ✓ Sets a replacement rate of 2.0 for heritage trees
- ✓ Offers heritage tree preservation credits

Proposed policy changes



Heritage tree
definition



Heritage tree
replacement
requirements



Heritage tree
preservation credits



Add a heritage tree definition

Significant trees*

5 inches diameter at standard height (dsh) for deciduous trees

6 inches dsh for coniferous trees

*with some exceptions

Heritage trees

30 inches dsh for deciduous trees

25 inches dsh for coniferous trees

Implement heritage tree replacement requirements

| | Removal allowed w/out replacement | Replacement rate |
|------------------|-----------------------------------|------------------|
| Significant tree | 20% | 1.5 |
| Heritage tree | 0% | 2.0 |



Offer heritage tree preservation credits

- 1:1 credit
- Max credit = 50% of total replacement requirement

Sample tree replacement calculation

Significant trees

$$\begin{array}{rcccl} \mathbf{67.7} & \times & \mathbf{1.5} & = & \mathbf{101.5} \\ \text{Inches} & & \text{Replacement} & & \text{Required} \\ \text{removed} & & \text{rate} & & \text{replacement} \end{array}$$

Heritage trees

$$\begin{array}{rcccl} \mathbf{30.0} & \times & \mathbf{2.0} & = & \mathbf{60.0} \\ \text{Inches} & & \text{Replacement} & & \text{Required} \\ \text{removed} & & \text{rate} & & \text{replacement} \end{array}$$

Total replacement requirement

$$\begin{array}{rcccl} \mathbf{101.5} & + & \mathbf{60.0} & = & \mathbf{161.5} \\ \text{Significant} & & \text{Heritage} & & \text{Total} \\ \text{trees} & & \text{trees} & & \text{replacement} \\ & & & & \text{requirement} \end{array}$$

$$\begin{array}{rcccl} \mathbf{161.5} & \times & \mathbf{\$225} & = & \mathbf{\$36,337.50} \\ \text{Total} & & \text{Fee per} & & \text{Total fee-in-} \\ \text{replacement} & & \text{inch} & & \text{lieu of} \\ \text{requirement} & & & & \text{planting} \end{array}$$

Sample tree replacement calculation

Significant trees

$$\begin{array}{rcccl} 67.7 & \times & 1.5 & = & 101.5 \\ \text{Inches} & & \text{Replacement} & & \text{Required} \\ \text{removed} & & \text{rate} & & \text{replacement} \end{array}$$

Heritage trees

$$\begin{array}{rcccl} 30.0 & \times & 2.0 & = & 60.0 \\ \text{Inches} & & \text{Replacement} & & \text{Required} \\ \text{removed} & & \text{rate} & & \text{replacement} \end{array}$$

Total replacement requirement

$$\begin{array}{rcccl} 101.5 & + & 60.0 & = & 161.5 \\ \text{Significant} & & \text{Heritage} & & \text{Total} \\ \text{trees} & & \text{trees} & & \text{replacement} \\ & & & & \text{requirement} \end{array}$$

$$\begin{array}{rcccl} 161.5 & \times & \$225 & = & \$36,337.50 \\ \text{Total} & & \text{Fee per} & & \text{Total fee-in-} \\ \text{replacement} & & \text{inch} & & \text{lieu of} \\ \text{requirement} & & & & \text{planting} \end{array}$$

Sample tree replacement calculation

Significant trees

$$67.7 \text{ Inches removed} \times 1.5 \text{ Replacement rate} = 101.5 \text{ Required replacement}$$

Heritage trees

$$30.0 \text{ Inches removed} \times 2.0 \text{ Replacement rate} = 60.0 \text{ Required replacement}$$

Total replacement requirement

$$101.5 \text{ Significant trees} + 60.0 \text{ Heritage trees} = 161.5 \text{ Total replacement requirement}$$

$$161.5 \text{ Total replacement requirement} \times \$225 \text{ Fee per inch} = \$36,337.50 \text{ Total fee-in-lieu of planting}$$

Sample heritage tree preservation credit

Quick Facts

161.5

Total replacement
requirement (in)

32.0

Heritage trees
preserved (in)

Calculating tree replacement with credits

161.5 **–** **32.0** **=** **129.5**

Total required
replacement
(pre-credits)

Heritage trees
preserved (in)

Total required
replacement
(post-credits)

129.5 **x** **\$225** **=** **\$29,134.70**

Total replacement
requirement
(post-credits)

Fee per
inch

Total fee-in-lieu
of planting
(post-credits)

Sample heritage tree preservation credit

Quick Facts

161.5

Total replacement
requirement (in)

32.0

Heritage trees
preserved (in)

Calculating tree replacement with credits

161.5 **-** **32.0** **=** **129.5**

Total required
replacement
(pre-credits)

Heritage trees
preserved (in)

Total required
replacement
(post-credits)

129.5 **x** **\$225** **=** **\$29,134.70**

Total replacement
requirement
(post-credits)

Fee per
inch

Total fee-in-lieu
of planting
(post-credits)

Sample heritage tree preservation credit

Quick Facts

161.5

Total replacement
requirement (in)

32.0

Heritage trees
preserved (in)

Calculating tree replacement with credits

161.5 **–** **32.0** **=** **129.5**

Total required
replacement
(pre-credits)

Heritage trees
preserved (in)

Total required
replacement
(post-credits)

129.5 **x** **\$225** **=** **\$29,134.70**

Total replacement
requirement
(post-credits)

Fee per
inch

Total fee-in-lieu
of planting
(post-credits)

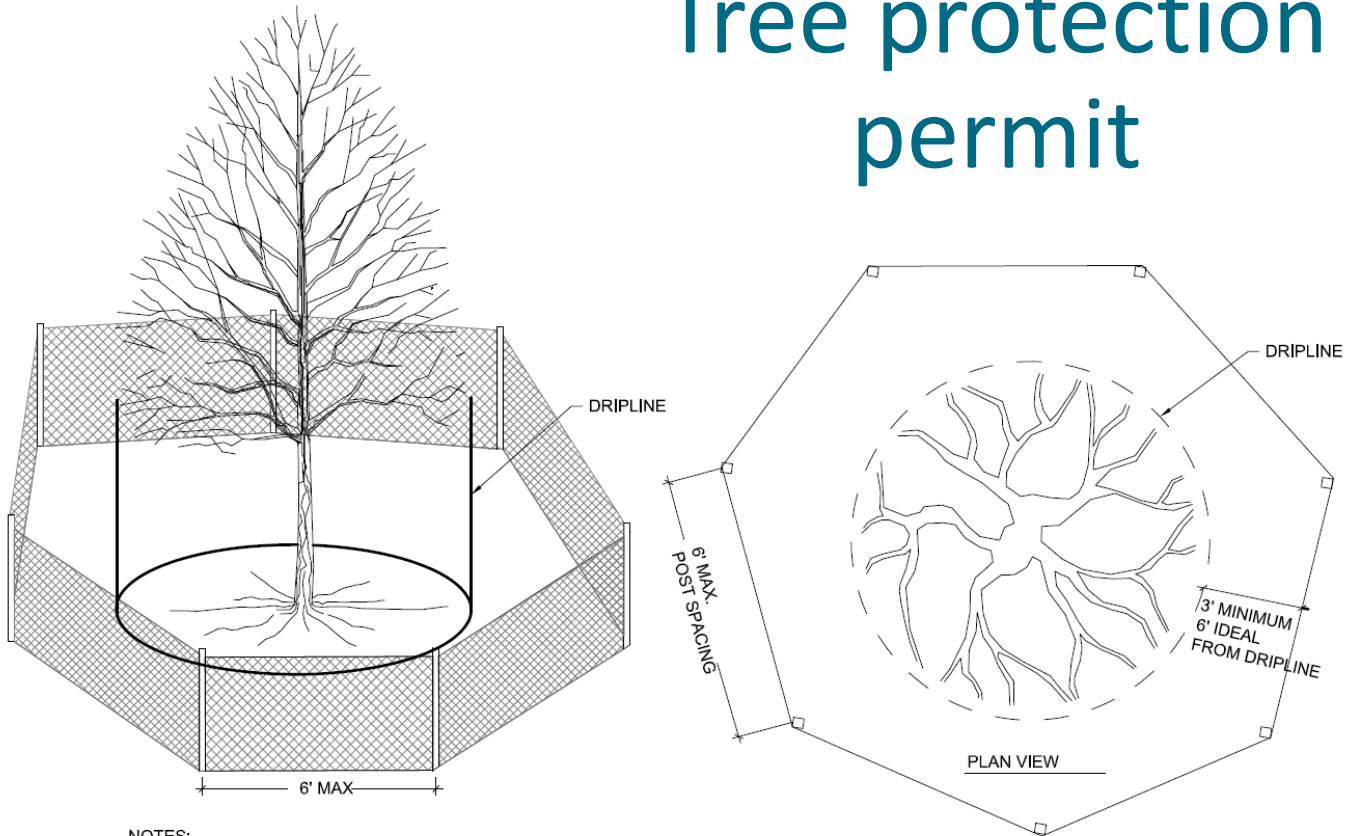
Existing policy

- ✓ Applies to commercial properties and new subdivisions
- ✓ Defines significant trees
- ✓ Sets a replacement rate of 1.5 for significant trees
- ✗ Defines heritage trees
- ✗ Sets a replacement rate of 2.0 for heritage trees
- ✗ Offers heritage tree preservation credits

Proposed policy

- ✓ Applies to commercial properties and new subdivisions
- ✓ Defines significant trees
- ✓ Sets a replacement rate of 1.5 for significant trees
- ✓ Defines heritage trees
- ✓ Sets a replacement rate of 2.0 for heritage trees
- ✓ Offers heritage tree preservation credits

Tree protection permit



NOTES:

1. ALL TREE PROTECTION FENCING AND EROSION CONTROL FENCING SHALL BE INSTALLED ACCORDING TO THE PLANS PRIOR TO ANY DEMOLITION, AFTER DEMOLITION OR AS NECESSARY, TREE PROTECTION FENCING MAY BE RELOCATED WITH APPROVAL FROM THE LANDSCAPE ARCHITECT. ALL TREE PROTECTION FENCING AND EROSION CONTROL DEVICES SHALL BE MAINTAINED FOR THE DURATION OF THE CONSTRUCTION PERIOD.
2. CONTRACTOR SHALL NOT STORE ANY MATERIALS OR PARK ANY VEHICLES IN TREE PROTECTION ZONES. THE FENCE SHALL PREVENT TRAFFIC MOVEMENT AND THE PLACEMENT OF TEMPORARY FACILITIES, EQUIPMENT, STOCKPILES AND SUPPLIES FROM HARMING VEGETATION WITHIN THE LIMITS OF PROTECTION
3. THE CONTRACTOR SHALL CLEANLY CUT ALL ROOTS EXPOSED BY GRADING AS DIRECTED BY THE LANDSCAPE ARCHITECT.
4. THE CONTRACTOR SHALL USE DESIGNATED CONSTRUCTION ENTRANCES AND STAGING AREAS.



Next steps

- Revisit planning commission for public hearing and formal recommendation.
- Bring proposed policy amendments for council action.

Policy question

Does the city council support the proposed amendments to the tree protection policy in city code?

Thank you

Katelyn Champoux, associate planner

Sean Walther, planning manager / deputy cd director

Michael Bahe, natural resources manager

Emily Ziring, sustainability manager