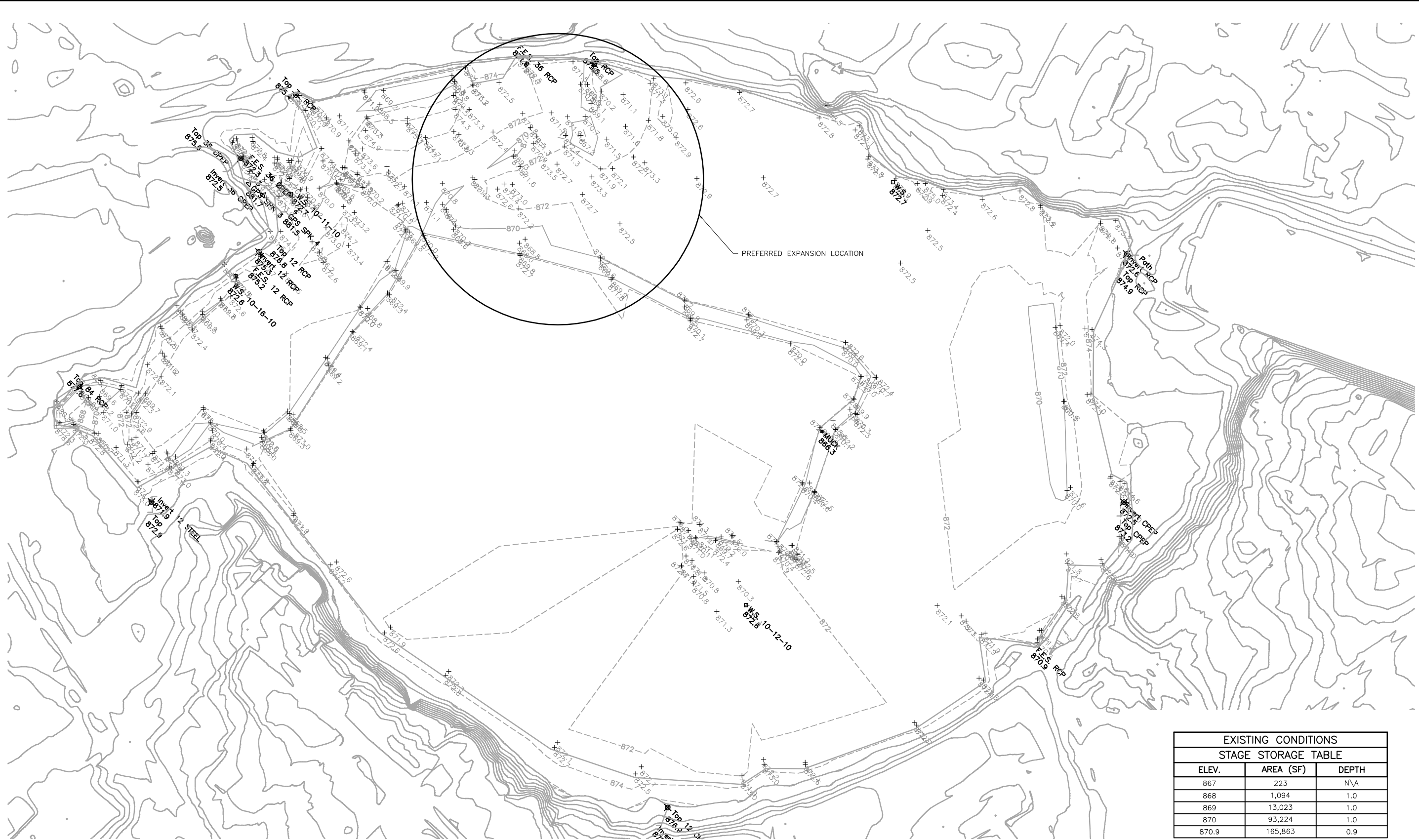
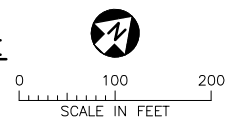


CADD USER: Candice M. Kantor FILE: BASS LAKE PRESERVE DRAWING.DWG PLOT SCALE: 1:2 PLOT DATE: 2/27/2012 11:18 AM
 X-REFS: NONE
 DATE: 2/27/2012



1 PLAN: BASS LAKE PRESERVE



EXISTING CONDITIONS STAGE STORAGE TABLE		
ELEV.	AREA (SF)	DEPTH
867	223	N/A
868	1,094	1.0
869	13,023	1.0
870	93,224	1.0
870.9	165,863	0.9

POND CAPACITY:
187,961 CF

NOTE: POND CAPACITY CALCULATED TO
NORMAL WATER LEVEL = 870.9

NO.	BY	CHK.	APP.	DATE	REVISION DESCRIPTION

CLIENT							
BID							
CONSTRUCTION							
RELEASED TO/FOR	A	B	C	0	1	2	3
DATE RELEASED							

Project Office:
BARR ENGINEERING CO.
 4700 WEST 77TH STREET
 MINNEAPOLIS, MN.
 55435-4803

Corporate Headquarters:
 Minneapolis, Minnesota
 Ph: 1-800-632-2277
 Fax: (652) 832-2601
 www.barr.com

Scale	AS SHOWN
Date	9/30/2010
Drawn	MJJ
Checked	
Designed	
Approved	

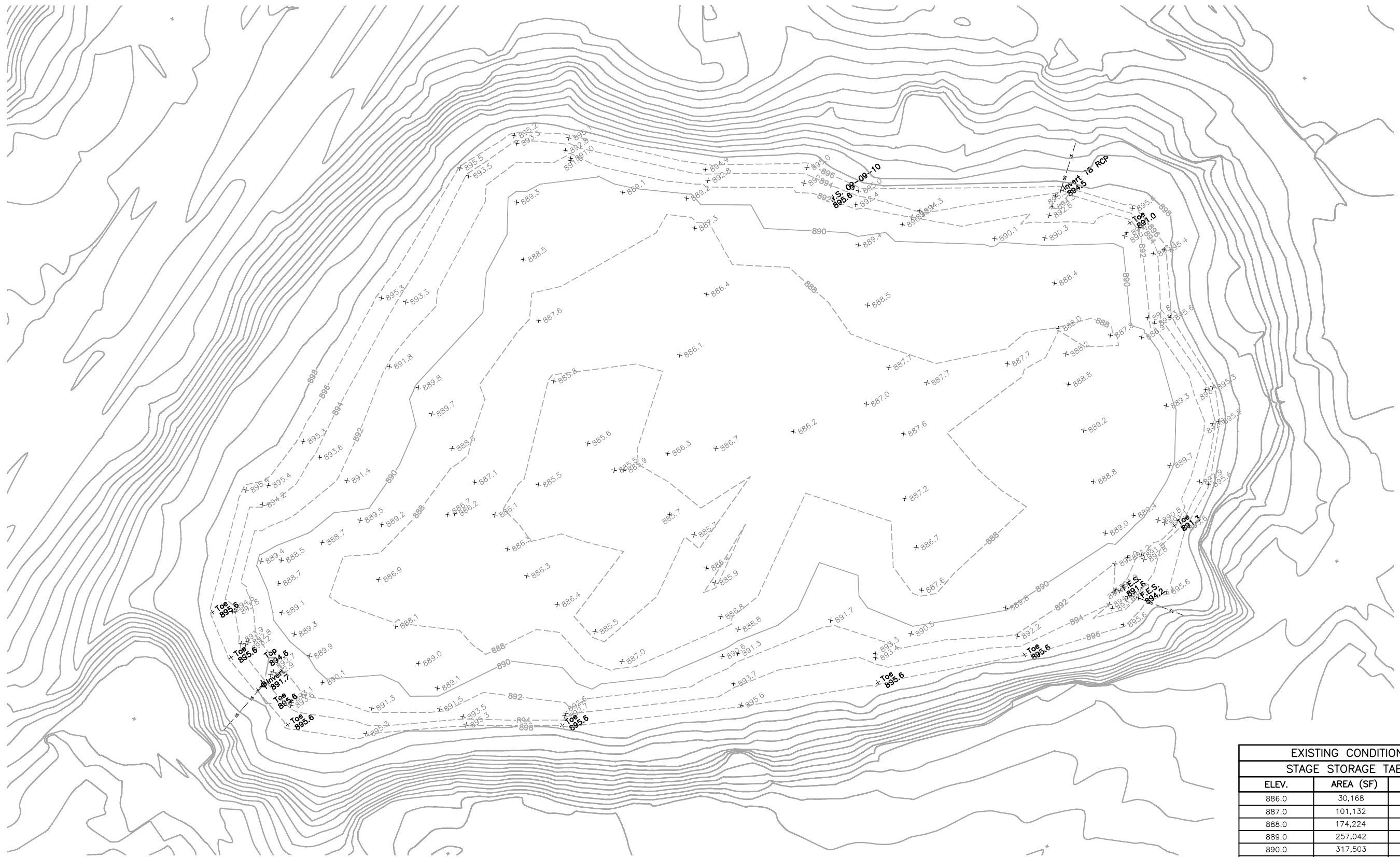
CITY OF ST. LOUIS PARK
 ST. LOUIS PARK, MINNESOTA

STORMWATER RETENTION PONDS
 BASS LAKE PRESERVE
 EXISTING CONDITIONS SURVEY
 TOPO, INLET & OUTLET LOCATIONS

BARR PROJECT No.	23/27-1142.00
CLIENT PROJECT No.	
DWG. No.	
REV. No.	

FIGURE 2

CADD USER: Candice M. Kantor FILE: COBBLE CREST LAKE DRAWING.DWG PLOT SCALE: 1:2 PLOT DATE: 2/27/2012 11:21 AM
 X-REFS
 DATE



1 PLAN: COBBLE CREST LAKE



POND CAPACITY:
1,308,500 CF

NOTE: POND CAPACITY CALCULATED TO
NORMAL WATER LEVEL = 891.7

EXISTING CONDITIONS STAGE STORAGE TABLE		
ELEV.	AREA (SF)	DEPTH
886.0	30,168	N/A
887.0	101,132	1.0
888.0	174,224	1.0
889.0	257,042	1.0
890.0	317,503	1.0
891.0	352,639	1.0
891.7	372,959	0.7

PRELIMINARY
DRAFT

NO.	BY	CHK.	APP.	DATE	REVISION DESCRIPTION

I HEREBY CERTIFY THAT THIS PLAN, SPECIFICATION, OR REPORT WAS PREPARED BY ME OR UNDER MY DIRECT SUPERVISION AND THAT I AM A DULY LICENSED PROFESSIONAL ENGINEER UNDER THE LAWS OF THE STATE OF MINNESOTA.

SIGNATURE _____
 PRINTED NAME _____
 DATE _____ REG. NO. _____

CLIENT	BID	CONSTRUCTION	RELEASED TO/FOR	A	B	C	0	1	2	3	DATE RELEASED

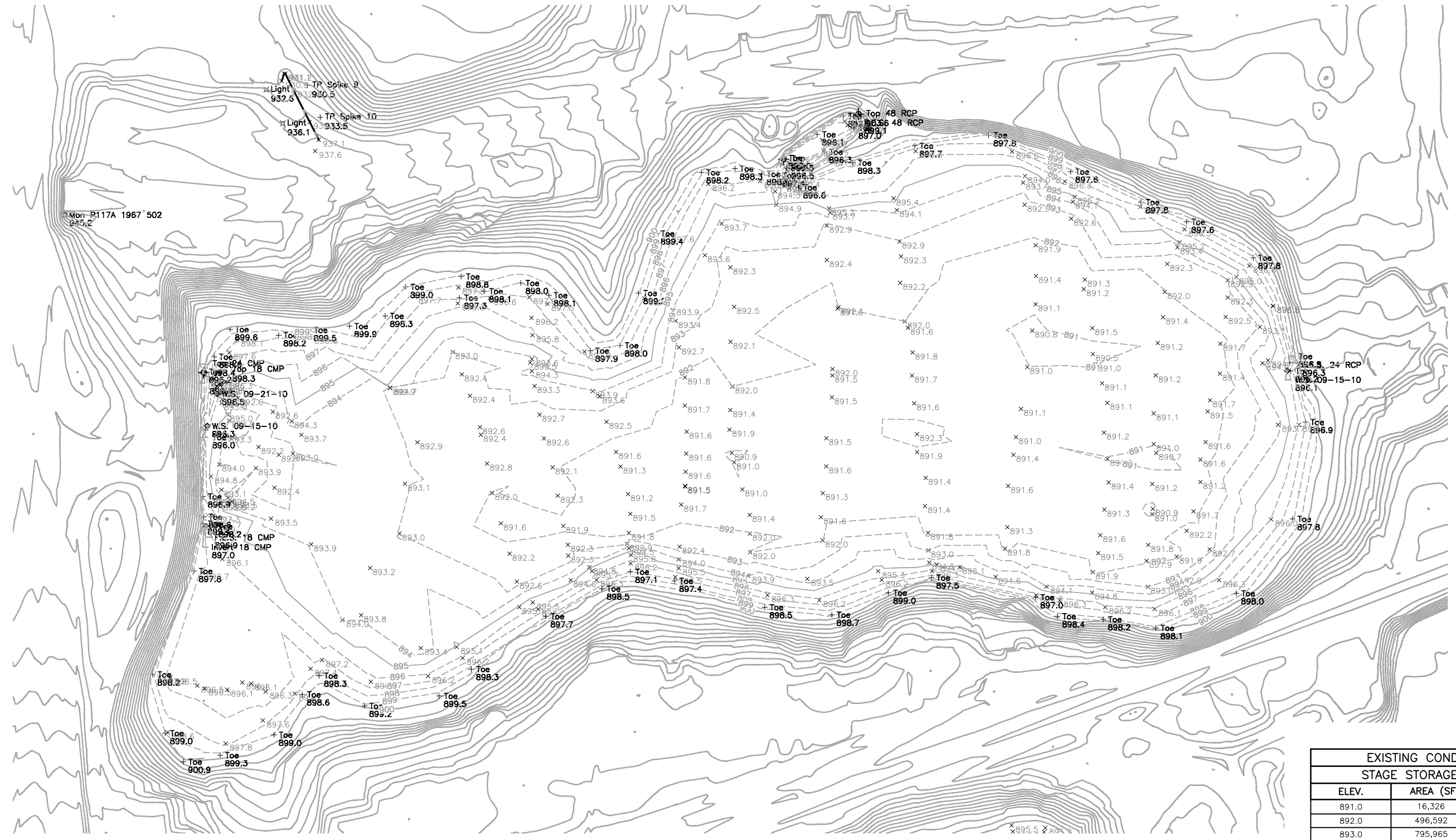
BARR
 Project Office:
BARR ENGINEERING CO.
 4700 WEST 77TH STREET
 MINNEAPOLIS, MN.
 55435-4803
 Corporate Headquarters:
 Minneapolis, Minnesota
 Ph: 1-800-632-2277

Scale	AS SHOWN
Date	9/30/2010
Drawn	MJJ
Checked	
Designed	
Approved	

CITY OF ST. LOUIS PARK
 ST. LOUIS PARK, MINNESOTA

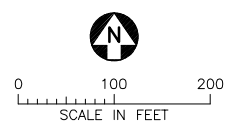
STORMWATER RETENTION PONDS
 COBBLE CREST LAKE
 EXISTING CONDITIONS SURVEY
 TOPO, INLET & OUTLET LOCATIONS

BARR PROJECT No. 23/27-1142.00	CLIENT PROJECT No.
DWG. No. FIGURE 14	REV. No.



EXISTING CONDITIONS		
STAGE STORAGE TABLE		
ELEV.	AREA (SF)	DEPTH
891.0	16,326	N/A
892.0	496,592	1.0
893.0	795,965	1.0
894.0	1,024,308	1.0
895.0	1,147,098	1.0
896.0	1,253,917	1.0
897.0	1,393,746	1.0

① PLAN: HANNON LAKE



POND CAPACITY:
5,458,740 CF

NOTE: POND CAPACITY CALCULATED TO
NORMAL WATER LEVEL = 897.0

PRELIMINARY
DRAFT

CADD USER: Coniece M. Kantor FILE: HANNON LAKE DRAWING.DWG PLOT SCALE: 1:2 PLOT DATE: 2/27/2012 11:22 AM

NO.	BY	CHK.	APP.	DATE	REVISION DESCRIPTION

I HEREBY CERTIFY THAT THIS PLAN, SPECIFICATION, OR REPORT WAS PREPARED BY ME OR UNDER MY DIRECT SUPERVISION AND THAT I AM A DULY LICENSED PROFESSIONAL ENGINEER UNDER THE LAWS OF THE STATE OF MINNESOTA.

SIGNATURE _____
PRINTED NAME _____
DATE _____ REG. NO. _____

CLIENT	BID	CONSTRUCTION	RELEASED TO/FOR	A	B	C	0	1	2	3	DATE RELEASED

BARR
Corporate Headquarters:
Minneapolis, Minnesota
Ph: 1-800-632-2277

Project Office:
BARR ENGINEERING CO.
4700 WEST 77TH STREET
MINNEAPOLIS, MN.
55435-4803
Ph: 1-800-632-2277
Fax: (952) 832-2601
www.barr.com

Scale	AS SHOWN
Date	9/30/2010
Drawn	MJJ
Checked	
Designed	
Approved	

CITY OF ST. LOUIS PARK
ST. LOUIS PARK, MINNESOTA

STORMWATER RETENTION PONDS
HANNON LAKE
EXISTING CONDITIONS SURVEY
TOPO, INLET & OUTLET LOCATIONS

BARR PROJECT No. 23/27-1142.00	REV. No.
CLIENT PROJECT No.	
DWG. No. FIGURE 25	

CADD USER: Candice M. Kantor FILE: VICTORIA LAKE DRAWING.DWG PLOT SCALE: 1:2 PLOT DATE: 2/27/2012 11:35 AM



EXISTING CONDITIONS		
STAGE STORAGE TABLE		
ELEV.	AREA (SF)	DEPTH
891.0	243	N/A
892.0	112,279	1.0
893.0	199,267	1.0
894.0	265,373	1.0
895.0	339,705	1.0
896.0	394,284	1.0
897.0	425,258	1.0
898.0	454,452	1.0
898.4	466,606	0.4

1 PLAN: VICTORIA LAKE



POND CAPACITY:
2,139,810 CF

NOTE: POND CAPACITY CALCULATED TO NORMAL WATER LEVEL = 898.4

PRELIMINARY
DRAFT

NO.	BY	CHK.	APP.	DATE	REVISION DESCRIPTION

I HEREBY CERTIFY THAT THIS PLAN, SPECIFICATION, OR REPORT WAS PREPARED BY ME OR UNDER MY DIRECT SUPERVISION AND THAT I AM A DULY LICENSED PROFESSIONAL ENGINEER UNDER THE LAWS OF THE STATE OF MINNESOTA.

SIGNATURE _____
PRINTED NAME _____
DATE _____ REG. NO. _____

CLIENT BID CONSTRUCTION	RELEASED TO/FOR				
	A	B	C	O	1 2 3

BARR
Corporate Headquarters:
Minneapolis, Minnesota
Ph: 1-800-632-2277

Project Office:
BARR ENGINEERING CO.
4700 WEST 77TH STREET
MINNEAPOLIS, MN.
55435-4803
Ph: 1-800-632-2277
Fax: (952) 832-2601
www.barr.com

Scale	AS SHOWN
Date	9/30/2010
Drawn	MJJ
Checked	
Designed	
Approved	

CITY OF ST. LOUIS PARK
ST. LOUIS PARK, MINNESOTA

STORMWATER RETENTION PONDS
VICTORIA LAKE

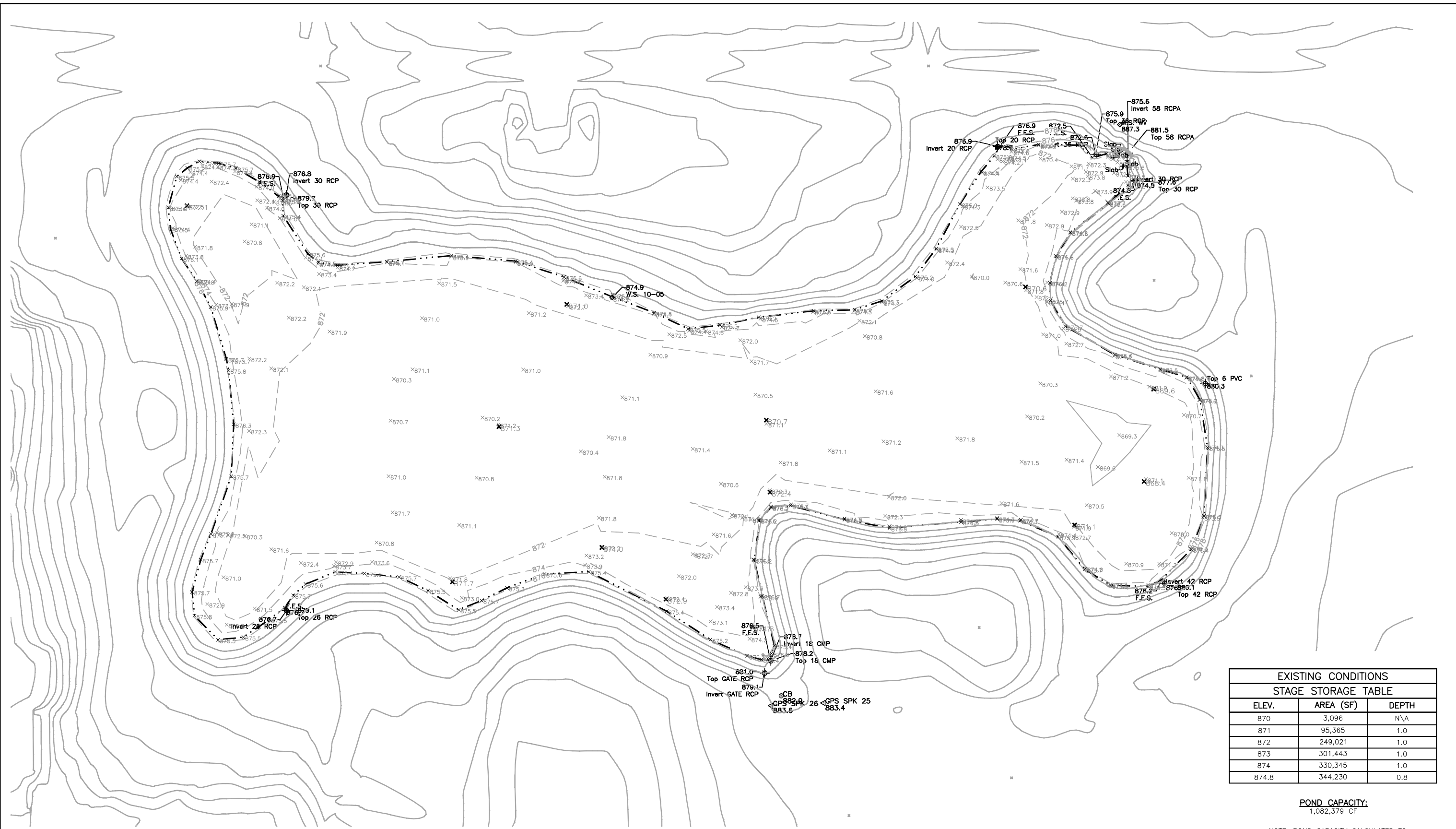
EXISTING CONDITIONS SURVEY
TOPO, INLET & OUTLET LOCATIONS

BARR PROJECT No.
23/27-1142.00

CLIENT PROJECT No.

DWG. No. **FIGURE 23** REV. No.

CADD USER: Condice M. Kantor FILE: M:\ADEPTWORK\CAD\2\LAMPLIGHTER POND DRAWING.DWG PLOT SCALE: 1:2 PLOT DATE: 2/27/2012 11:24 AM



1 PLAN: LAMPLIGHTER POND

EXISTING CONDITIONS		
STAGE STORAGE TABLE		
ELEV.	AREA (SF)	DEPTH
870	3,096	N/A
871	95,365	1.0
872	249,021	1.0
873	301,443	1.0
874	330,345	1.0
874.8	344,230	0.8

POND CAPACITY:
1,082,379 CF

NOTE: POND CAPACITY CALCULATED TO
NORMAL WATER LEVEL = 874.8

NO.	BY	CHK.	APP.	DATE	REVISION DESCRIPTION

I HEREBY CERTIFY THAT THIS PLAN, SPECIFICATION, OR REPORT WAS PREPARED BY ME OR UNDER MY DIRECT SUPERVISION AND THAT I AM A DULY LICENSED PROFESSIONAL ENGINEER UNDER THE LAWS OF THE STATE OF MINNESOTA.

SIGNATURE _____
PRINTED NAME _____
DATE _____ REG. NO. _____

RELEASED TO/FOR	A	B	C	0	1	2	3

Project Office:
BARR ENGINEERING CO.
4700 WEST 77TH STREET
MINNEAPOLIS, MN.
55435-4803

Corporate Headquarters:
Minneapolis, Minnesota
Ph: 1-800-632-2277

Scale	AS SHOWN
Date	11/30/2011
Drawn	MJJ
Checked	CMH2
Designed	
Approved	SAS

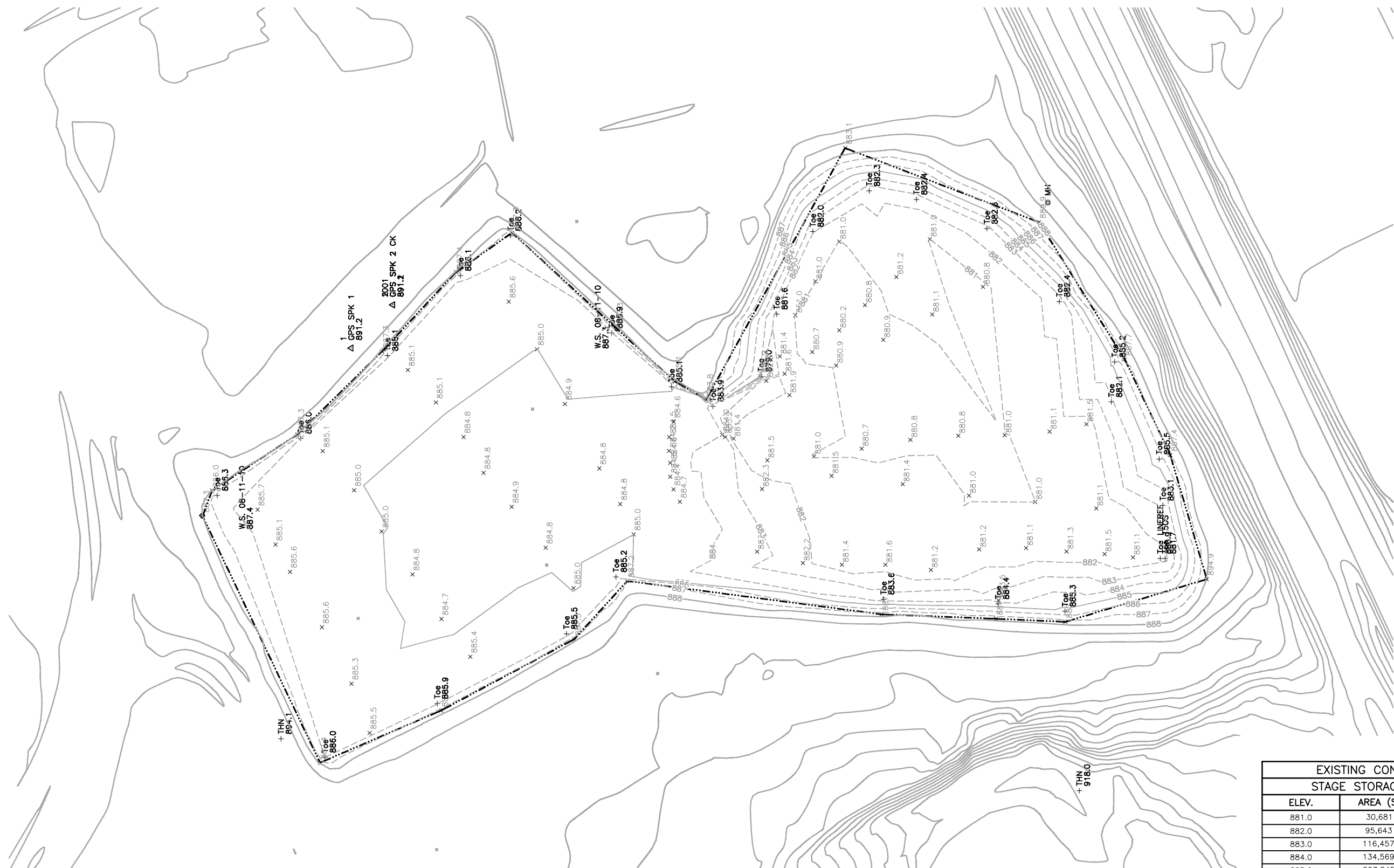
CITY OF ST. LOUIS PARK
ST. LOUIS PARK, MINNESOTA

STORMWATER RETENTION PONDS
LAMPLIGHTER POND

EXISTING CONDITIONS SURVEY
TOPO, INLET & OUTLET LOCATIONS

BARR PROJECT No. 23/27-1142.00	REV. No.
CLIENT PROJECT No.	
DWC. No.	
FIGURE 8	

CADD USER: Candice M. Kantor FILE: SOUTH OAK POND DRAWING.DWG PLOT SCALE: 1:2 PLOT DATE: 2/27/2012 11:33 AM
 X-REFS DATE
 DATE



① PLAN: SOUTH OAK POND



0 50 100
 SCALE IN FEET

POND CAPACITY:
 1,100,810 CF

NOTE: POND CAPACITY CALCULATED TO
 NORMAL WATER LEVEL = 887.3

EXISTING CONDITIONS STAGE STORAGE TABLE		
ELEV.	AREA (SF)	DEPTH
881.0	30,681	N/A
882.0	95,643	1.0
883.0	116,457	1.0
884.0	134,569	1.0
885.0	203,845	1.0
886.0	284,219	1.0
887.0	303,729	1.0
887.3	308,462	0.3

PRELIMINARY
 DRAFT

NO.	BY	CHK.	APP.	DATE	REVISION DESCRIPTION

I HEREBY CERTIFY THAT THIS PLAN, SPECIFICATION, OR REPORT WAS PREPARED BY ME OR UNDER MY DIRECT SUPERVISION AND THAT I AM A DULY LICENSED PROFESSIONAL ENGINEER UNDER THE LAWS OF THE STATE OF MINNESOTA.
 SIGNATURE _____
 PRINTED NAME _____
 DATE _____ REG. NO. _____

CLIENT	BID	CONSTRUCTION	RELEASED TO/FOR	A	B	C	0	1	2	3	DATE RELEASED

BARR
 Project Office:
BARR ENGINEERING CO.
 4700 WEST 77TH STREET
 MINNEAPOLIS, MN.
 55435-4803
 Corporate Headquarters:
 Minneapolis, Minnesota
 Ph: 1-800-632-2277
 Fax: (952) 832-2601
 www.barr.com

Scale	AS SHOWN
Date	9/30/2010
Drawn	MJJ
Checked	
Designed	
Approved	

CITY OF ST. LOUIS PARK
 ST. LOUIS PARK, MINNESOTA

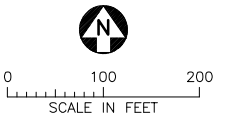
STORMWATER RETENTION PONDS
 SOUTH OAK POND
 EXISTING CONDITIONS SURVEY
 TOPO, INLET & OUTLET LOCATIONS

BARR PROJECT No. 23/27-1142.00	CLIENT PROJECT No.
DWG. No. FIGURE 21	REV. No.

CADD USER: Candice M. Kantor FILE: TWIN LAKE DRAWING.DWG PLOT SCALE: 1:2 PLOT DATE: 2/27/2012 11:34 AM
 X-REFS DATE
 DATE



1 PLAN: TWIN LAKE



POND CAPACITY:
2,640,250 CF

NOTE: POND CAPACITY CALCULATED TO
NORMAL WATER LEVEL = 869.8

EXISTING CONDITIONS STAGE STORAGE TABLE		
ELEV.	AREA (SF)	DEPTH
860.0	29,120	N/A
861.0	60,868	1.0
862.0	83,228	1.0
863.0	112,284	1.0
864.0	180,193	1.0
865.0	299,703	1.0
866.0	358,534	1.0
867.0	414,600	1.0
868.0	456,742	1.0
869.0	490,022	1.0
869.8	514,310	0.8

PRELIMINARY
DRAFT

NO.	BY	CHK.	APP.	DATE	REVISION DESCRIPTION

I HEREBY CERTIFY THAT THIS PLAN, SPECIFICATION, OR REPORT WAS PREPARED BY ME OR UNDER MY DIRECT SUPERVISION AND THAT I AM A DULY LICENSED PROFESSIONAL ENGINEER UNDER THE LAWS OF THE STATE OF MINNESOTA.

SIGNATURE _____
 PRINTED NAME _____
 DATE _____ REG. NO. _____

CLIENT	BID	CONSTRUCTION	RELEASED TO/FOR	A	B	C	0	1	2	3

BARR
 Project Office:
BARR ENGINEERING CO.
 4700 WEST 77TH STREET
 MINNEAPOLIS, MN.
 55435-4803
 Corporate Headquarters:
 Minneapolis, Minnesota
 Ph: 1-800-632-2277
 Fax: (952) 832-2601
 www.barr.com

Scale	AS SHOWN
Date	9/30/2010
Drawn	MJJ
Checked	
Designed	
Approved	

CITY OF ST. LOUIS PARK
 ST. LOUIS PARK, MINNESOTA

STORMWATER RETENTION PONDS
 TWIN LAKE
 EXISTING CONDITIONS SURVEY
 TOPO, INLET & OUTLET LOCATIONS

BARR PROJECT No. 23/27-1142.00	REV. No.
CLIENT PROJECT No.	
DWG. No. FIGURE 3	



1 PLAN: WESTLING POND



0 50 100
SCALE IN FEET

POND CAPACITY:
803,569 CF

NOTE: POND CAPACITY CALCULATED TO
NORMAL WATER LEVEL = 898.3

EXISTING CONDITIONS STAGE STORAGE TABLE		
ELEV.	AREA (SF)	DEPTH
892.0	65	N/A
893.0	68,699	1.0
894.0	119,532	1.0
895.0	140,847	1.0
896.0	159,511	1.0
897.0	171,652	1.0
898.0	181,960	1.0
898.3	187,234	0.3

PRELIMINARY
DRAFT

CADD USER: Candice M. Kantor FILE: WESTLING POND DRAWING.DWG PLOT SCALE: 1:2 PLOT DATE: 2/27/2012 11:36 AM

NO.	BY	CHK.	APP.	DATE	REVISION DESCRIPTION

I HEREBY CERTIFY THAT THIS PLAN, SPECIFICATION, OR REPORT WAS PREPARED BY ME OR UNDER MY DIRECT SUPERVISION AND THAT I AM A DULY LICENSED PROFESSIONAL ENGINEER UNDER THE LAWS OF THE STATE OF MINNESOTA.

SIGNATURE _____
PRINTED NAME _____
DATE _____ REG. NO. _____

CLIENT	BID	CONSTRUCTION	RELEASED TO/FOR	A	B	C	0	1	2	3	DATE RELEASED

BARR
Project Office:
BARR ENGINEERING CO.
4700 WEST 77TH STREET
MINNEAPOLIS, MN.
55435-4803
Corporate Headquarters:
Minneapolis, Minnesota
Ph: 1-800-632-2277

Scale	AS SHOWN
Date	9/30/2010
Drawn	MJJ
Checked	
Designed	
Approved	

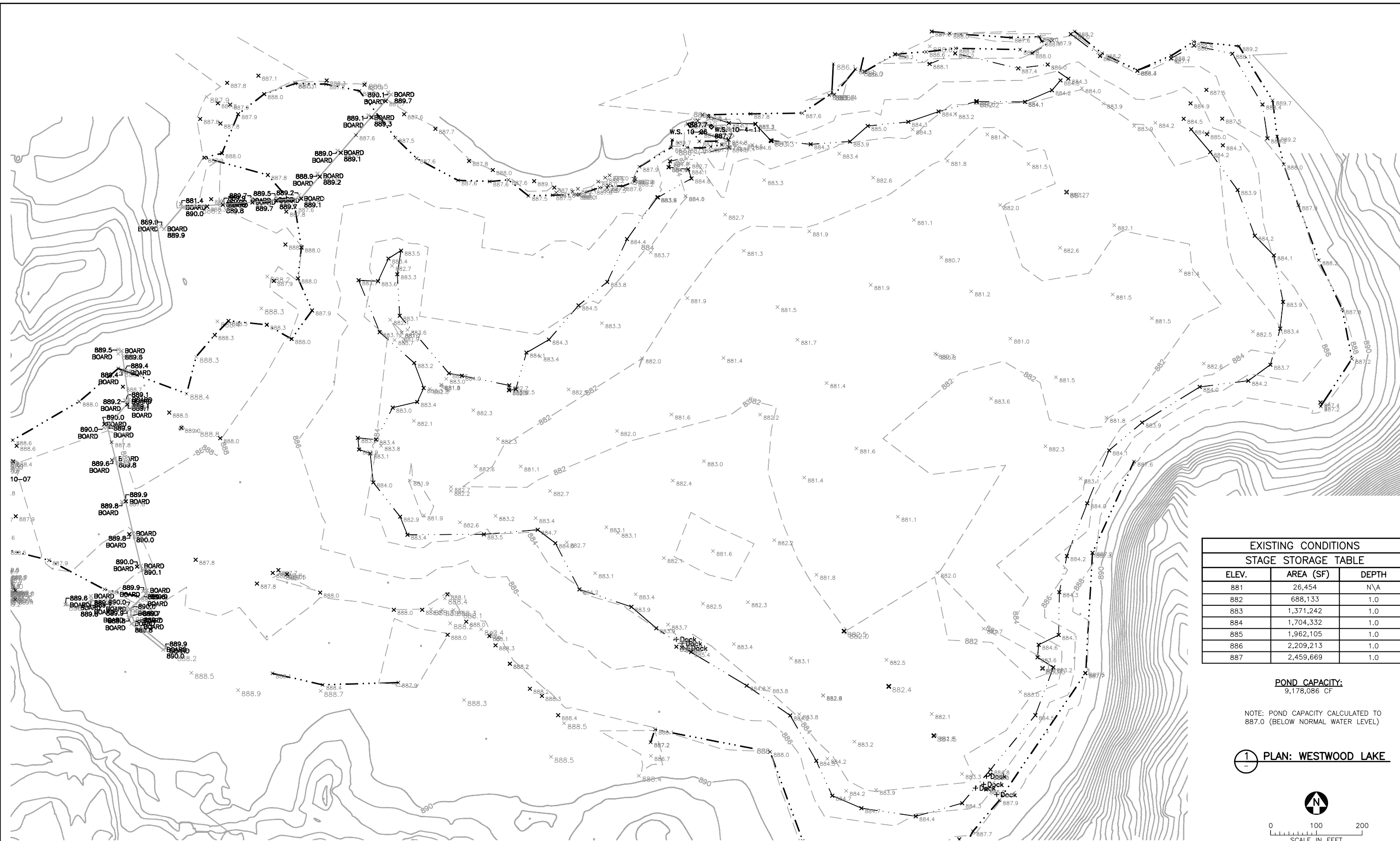
CITY OF ST. LOUIS PARK
ST. LOUIS PARK, MINNESOTA

STORMWATER RETENTION PONDS
WESTLING POND

EXISTING CONDITIONS SURVEY
TOPO, INLET & OUTLET LOCATIONS

BARR PROJECT No. 23/27-1142.00	
CLIENT PROJECT No.	
DWG. No. FIGURE 22	REV. No.

CADD USER: Constance M. Kantor FILE: M:\ADEPTWORK\CMH2\WESTWOOD LAKE DRAWING.DWG PLOT SCALE: 1:2 PLOT DATE: 2/27/2012 11:37 AM



EXISTING CONDITIONS STAGE STORAGE TABLE		
ELEV.	AREA (SF)	DEPTH
881	26,454	N/A
882	688,133	1.0
883	1,371,242	1.0
884	1,704,332	1.0
885	1,962,105	1.0
886	2,209,213	1.0
887	2,459,669	1.0

POND CAPACITY:
9,178,086 CF

NOTE: POND CAPACITY CALCULATED TO
887.0 (BELOW NORMAL WATER LEVEL)

1 PLAN: WESTWOOD LAKE



0 100 200
SCALE IN FEET

NO.	BY	CHK.	APP.	DATE	REVISION DESCRIPTION

I HEREBY CERTIFY THAT THIS PLAN, SPECIFICATION, OR REPORT WAS PREPARED BY ME OR UNDER MY DIRECT SUPERVISION AND THAT I AM A DULY LICENSED PROFESSIONAL ENGINEER UNDER THE LAWS OF THE STATE OF MINNESOTA.

SIGNATURE _____
PRINTED NAME _____
DATE _____ REG. NO. _____

RELEASED TO/FOR	A	B	C	0	1	2	3

Project Office:
BARR ENGINEERING CO.
4700 WEST 77TH STREET
MINNEAPOLIS, MN.
55435-4803

Corporate Headquarters:
Minneapolis, Minnesota
Ph: 1-800-632-2277
Fax: (952) 832-2601
www.barr.com

Scale	AS SHOWN
Date	11/30/2011
Drawn	MJJ
Checked	CMH2
Designed	
Approved	SAS

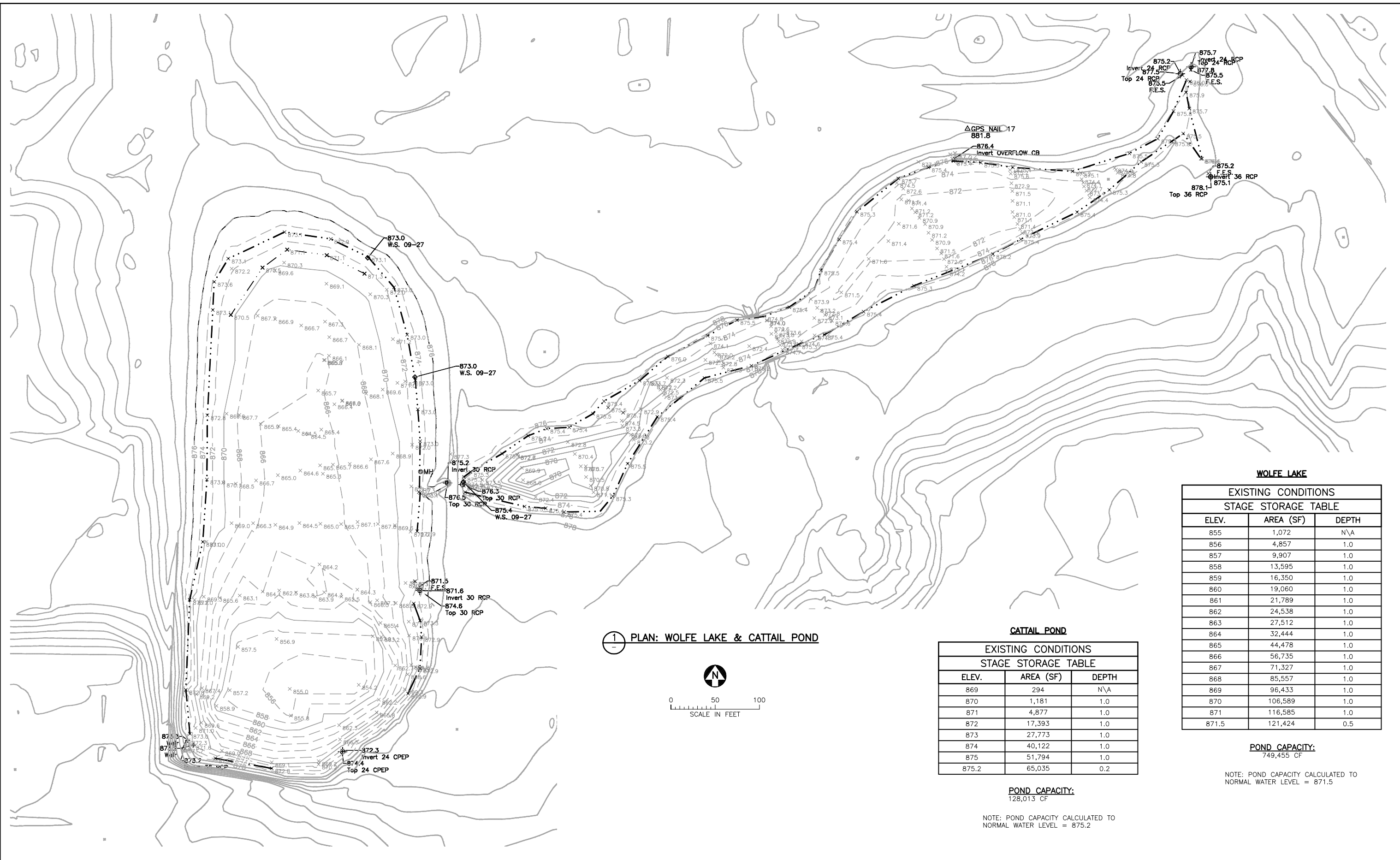
CITY OF ST. LOUIS PARK
ST. LOUIS PARK, MINNESOTA

STORMWATER RETENTION PONDS
WESTWOOD LAKE

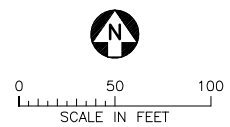
EXISTING CONDITIONS SURVEY
TOPO, INLET & OUTLET LOCATIONS

BARR PROJECT No. 23/27-1142.00	CLIENT PROJECT No.
DWG. No. FIGURE 26	REV. No.

CADD USER: Constance M. Kantor FILE: M:\ADEPTWORK\CMH2\CATTAIL POND DRAWING.DWG PLOT SCALE: 1:2 PLOT DATE: 2/27/2012 11:19 AM



1 PLAN: WOLFE LAKE & CATTAIL POND



WOLFE LAKE

EXISTING CONDITIONS		
STAGE STORAGE TABLE		
ELEV.	AREA (SF)	DEPTH
855	1,072	N/A
856	4,857	1.0
857	9,907	1.0
858	13,595	1.0
859	16,350	1.0
860	19,060	1.0
861	21,789	1.0
862	24,538	1.0
863	27,512	1.0
864	32,444	1.0
865	44,478	1.0
866	56,735	1.0
867	71,327	1.0
868	85,557	1.0
869	96,433	1.0
870	106,589	1.0
871	116,585	1.0
871.5	121,424	0.5

CATTAIL POND

EXISTING CONDITIONS		
STAGE STORAGE TABLE		
ELEV.	AREA (SF)	DEPTH
869	294	N/A
870	1,181	1.0
871	4,877	1.0
872	17,393	1.0
873	27,773	1.0
874	40,122	1.0
875	51,794	1.0
875.2	65,035	0.2

POND CAPACITY:
749,455 CF

NOTE: POND CAPACITY CALCULATED TO NORMAL WATER LEVEL = 871.5

POND CAPACITY:
128,013 CF

NOTE: POND CAPACITY CALCULATED TO NORMAL WATER LEVEL = 875.2

NO.	BY	CHK	APP.	DATE	REVISION DESCRIPTION

CLIENT	
BID	
CONSTRUCTION	
RELEASED TO/FOR	
DATE RELEASED	

Project Office:
BARR ENGINEERING CO.
 4700 WEST 77TH STREET
 MINNEAPOLIS, MN.
 55435-4803
 Corporate Headquarters:
 Minneapolis, Minnesota
 Ph: 1-800-632-2277

Scale	AS SHOWN
Date	11/30/2011
Drawn	MJJ
Checked	CMH2
Designed	
Approved	SAS

CITY OF ST. LOUIS PARK
 ST. LOUIS PARK, MINNESOTA

STORMWATER RETENTION PONDS
 CATTAIL POND & WOLFE LAKE
 EXISTING CONDITIONS SURVEY
 TOPO, INLET & OUTLET LOCATIONS

BARR PROJECT No.	23/27-1142.00
CLIENT PROJECT No.	
DWG. No.	FIGURE 19
REV. No.	