



PHASE 3 ENGAGEMENT SUMMARY



This report summarizes engagement events and community feedback collected from surveys and in-person events conducted in the third and final phase of engagement for Arrive + Thrive. Activities included the community celebration and an online survey. There were over 150 contributors to engagement activities through this phase.

June 2024



Arrive + Thrive Phase 3: Solutions Engagement

When: April to May 2024

What are you most excited to see completed in the Beltline Gateway?

Share your priorities!
Which outcomes are you most excited to see completed?
Identify the **top five outcomes** that are most important to you. With the five poker chips provided to you, drop them in the jars for the outcomes that are your highest priority. You can place all five chips in one jar or spread them out across multiple.

Do you want to be a part of implementation?
To stay engaged with the implementation of the Beltline outcomes, provide your contact information to stay connected with updates and future actions.

Do you have additional thoughts/questions?
Share any additional comments or questions on the outcomes on a post-it note and place it below.

Phase 3 purpose

The third phase of engagement provided an opportunity for the community to learn about the solutions identified through the Arrive + Thrive process and share their thoughts. There were two levels of engagement through the event:

INFORM: The draft gateway plans, illustrations and key solutions were shared with community members, including details about future implementation.

CONSULT: The activities were developed to gather feedback on the identified solutions from community members. They had opportunities to prioritize the identified solutions, ask questions, and share additional thoughts and ideas.



Phase 3 events

There were two primary methods for collecting input during the third phase - a community celebration and an online survey. The community event was held at Doc's Hall on May 14th from 4 to 7pm. The online survey was available from April 29th to May 31st.

The following materials were prepared for the events:

- Short videos introducing each gateway and key solutions
- Illustrative plans for each gateway displaying the identified solutions
- Solution descriptions that highlighted each outcome with associated graphics.

The input gathered through the in-person and online engagement is summarized in the following pages.



Phase 3 promotion

A number of tactics were used to promote the open house and community survey, including:

- City and neighborhood social media accounts (e.g., Facebook, Instagram, NextDoor)
- Short video to be used on social media
- GovDelivery emails to existing subscribers
- Postcards sent to the properties within the study area

Gateway summary format

The summary for each gateway is presented in a similar format as identified below.

Gateway solutions

- List of the identifies solutions for the respective gateway



Gateway solution priorities

The in-person and online engagement activities included different ways for community members to prioritize the identified solutions. The following tables summarize the results of each activity, identifying community priorities and the associated data.

For the online activity, community members were asked to put the solutions in priority order. The table below uses the average rank for each solution to identify the priority.

The in-person activity provided people an opportunity to prioritize up to five solutions by placing markers in corresponding jars, and the resulting numbers were used to identify priorities.

Online Results

Rank	Solution	Avg. Rank
1	Solution A	#
2	Solution B	#

In-person Results

Rank	Solution	# of chips
1	Solution A	#
2	Solution B	#

Implementation and considerations

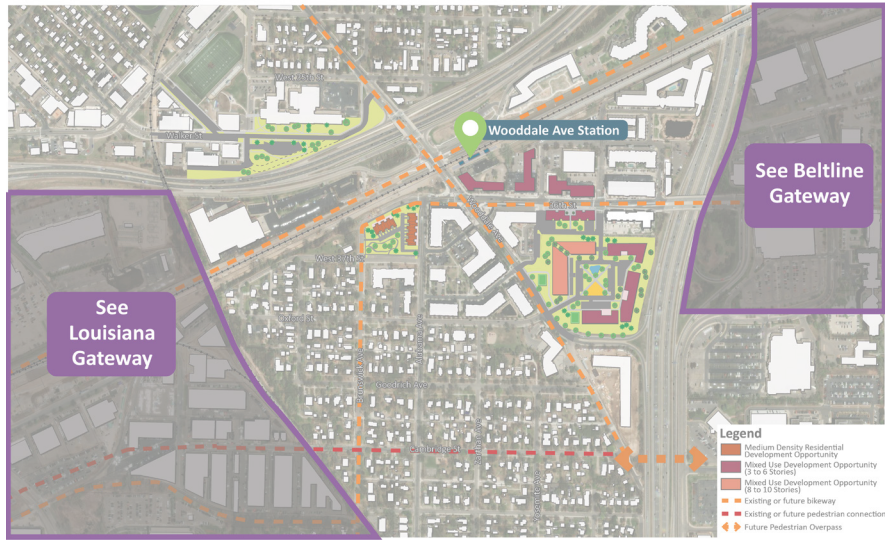
Participants were provided an opportunity to share additional thoughts and comments about the identified solutions. Many of these comments focused on excitement for implementation and future action within each gateway. These comments are highlighted.



Wooddale Gateway Summary

Wooddale Gateway solutions

- Highway 100 bike/pedestrian bridge
- New park space addition
- Micro Center/Burlington Coat Factory redevelopment
- Urban realm enhancements
- Former Johnny Pop's site redevelopment
- Walker Street realignment



Wooddale Gateway solution priorities

Community priorities varied among online and in-person engagement for the Wooddale Gateway. The Highway 100 bike/pedestrian bridge was highly prioritized by online respondents. Generally, the redevelopment opportunities were well received across all engagement activities. The redevelopment solutions included various comments, including support for the identified areas, questions about building height, and inquiries about displacement of current uses.

Online Results

Rank	Solution	Avg. Rank
1	Highway 100 bike/pedestrian bridge	2.22
2	New park space addition	2.6
3	Micro Center Burlington Coat Factory redevelopment	3
4	Urban realm enhancements	3.81
5	Former Johnny Pop's site redevelopment	4.05
6	Walker Street realignment	4.05

In-person Results

Rank	Solution	# of chips
1	Micro Center + Burlington Coat Factory redevelopment	25
2	Former Johnny Pop's site redevelopment	24
3	Walker Street realignment	16
4	Highway 100 Bike + Pedestrian Bridge	15
5	Urban realm enhancements	14
6	New park space addition	13



Wooddale Gateway Summary

Wooddale Gateway implementation and considerations

The following themes and messages were also heard from community members throughout the engagement process, focusing on the implementation and next steps for the Wooddale Gateway solutions.

General implementation

- Consider fiscal responsibility as a key point of decision making regarding new investments.

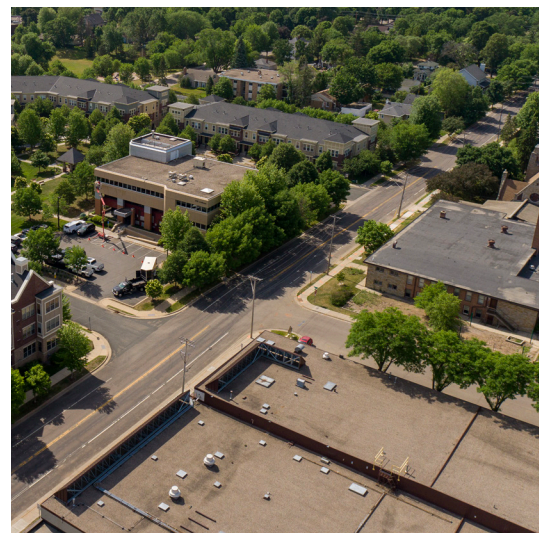
Mobility + access

- Prioritize pedestrian access from Walker Lake to the Wooddale Station.
- Support for more connections into the gateway from other parts of the city.
- Support for bike facilities with physical separation from driving lanes.
- Increase transit opportunities.



Land use + development

- Consider the height of new buildings within the surrounding context.
- Support public realm enhancements. For example, paint or include art of electrical boxes.
- Explore opportunities for public art. The Nash Frame building could be painted towards the rail for an art contest.
- Be thoughtful with the use of development incentives in areas where development is likely.
- Support for the use of incentives to encourage affordable housing development.
- Consider the redevelopment/updates to existing buildings rather than full redevelopment.
- Consider noise reduction features with new developments.
- Support variety of the multifamily housing developments.



Parks + natural systems

- Explore spaces for dogs in the gateway.

 20 community members signed up for more information or identified a desire to be a part of implementation!

Beltline Gateway Summary

Beltline Gateway solutions

- Bass Lake connections
- New open space and stormwater
- 35th Street and Raleigh Avenue design
- Park Glen Road building reuse opportunities
- Roadway network updates
- Mixed use redevelopment
- Park Glen Road extension
- Residential redevelopment



Beltline Gateway solution priorities

The preservation and enhancement of connections to Bass Lake were prioritized in both in-person and online engagement as the top priority. The design of 35th Street and Raleigh Avenue were also equally prioritized. The new open space and stormwater investments varied in the priority across events. Questions were posed around the extension of Park Glen Road and the residential redevelopment opportunity, but was generally well received.

Online Results

Rank	Solution	Avg. Rank
1	Bass Lake connections	3.31
2	New open space + stormwater	3.61
3	35th Street + Raleigh Avenue design	3.78
4	Park Glen Road building reuse opportunities	3.89
5	Roadway network updates	4
6	Mixed use redevelopment	4.11
7	Park Glen Road extension	4.59
8	Residential redevelopment	5

In-person Results

Rank	Solution	# of chips
1	Bass Lake Connections	21
2	Mixed use development	18
3	35th Street + Raleigh Ave design	16
4	Residential redevelopment	15
5	Roadway network updates	15
6	Park Glen Road building reuse opportunities	13
7	Park Glen Road extension	7
8	New open space + stormwater	6



Beltline Gateway Summary

Beltline Gateway implementation and considerations

The following themes and messages were also heard from community members throughout the engagement process, focusing on the implementation and next steps for the Beltline Gateway solutions.

General implementation

- Consider welcome and information hubs to share information about community resources.

Mobility + access

- Desires for increase public transportation options and connections.
- Creating pedestrian friendly spaces and places for people to gather.
- Support of additional bike infrastructure throughout the gateway.

Land use + development

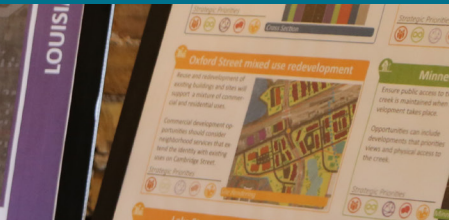
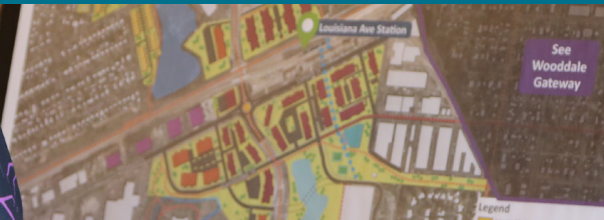
- Support building reuse, that support existing businesses and do not price out current offerings.
- Support for more 30% area median income (AMI) housing options with access to transportation hubs.
- Support for reuse opportunities with exciting destinations.

Parks + natural systems

- Consider planning a variety of trees in public platings to prevent disease transmission.
- Utilize drought and heat resistance trees.



17 community members signed up for more information or identified a desire to be a part of implementation!



Louisiana Gateway Summary

Louisiana Gateway solutions

- Pedestrian connection
- Minnehaha Creek connection
- Oxford Street design
- Stormwater management
- Realignment of Methodist Hospital access
- South Railroad spur
- South Oak Hill redevelopment opportunities
- Oxford Street mixed use redevelopment opportunities
- Lake Street redevelopment



Louisiana Gateway solution priorities

Multimodal connections to destinations and natural spaces were prioritized within the Louisiana Gateway. Redevelopment south of the railroad tracks was a higher priority for in-person respondents than online respondents. Overall, sentiments of support were received for the plan, recognizing that there are lots of elements to address.

Online Results		
Rank	Solution	Avg. Rank
1	Pedestrian street connection	2.38
2	Minnehaha Creek connection	3.33
3	Oxford Street design	4.31
4	Stormwater management	4.73
5	Realignment of Methodist Hospital access	4.91
6	South Railroad spur	5.31
7	South Oak Hill redevelopment opportunities	5.54
8	Oxford Street mixed use redevelopment opportunities	5.76
9	Lake Street redevelopment	6.17

In-person Results		
Rank	Solution	# of chips
1	South Railroad spur	20
2	Oxford Street mixed use redevelopment opportunities	17
3	Pedestrian street connection	12
4	Minnehaha Creek connection	12
5	Lake Street redevelopment	11
6	Oxford Street design	10
7	Realignment of Methodist Hospital access	8
8	South Oak Hill redevelopment opportunities	5
9	Stormwater management	3



Louisiana Gateway Summary

Louisiana Gateway implementation and considerations

The following themes and messages were also heard from community members throughout the engagement process, focusing on the implementation and next steps for the Louisiana Gateway solutions.

General implementation

- Support for transportation infrastructure investments.

Mobility + access

- Support for more connections into the gateway from other parts of the city.
- Support for the conversion of the south rail spur to a bikeway.
- Explore the noise and traffic impacts of the Methodist access realignment.
- Prioritize bicycles, pedestrians, and transit access over parking and vehicles.
- Support for dedicated and separated bicycle, pedestrian and vehicular infrastructure.
- Louisiana Avenue should be used as part of the route that supports a future intercity shuttle.

Land use + development

- No specific comments

Parks + natural systems

- No specific comments



10 community members signed up for more information or identified a desire to be a part of implementation!

Excelsior Gateway Summary

Excelsior Gateway solutions

- Brunswick Avenue bikeway
- West Excelsior Boulevard roadway design
- Urban realm enhancements
- Brunswick Avenue access change
- Party City redevelopment opportunities
- Reuse opportunities and shared parking
- Zarthan Avenue access change
- Jessen Press redevelopment opportunities



Excelsior Gateway solution priorities

Mobility investments were highly priorities among respondents, both for the redesign of West Excelsior Boulevard and the implementation of the Brunswick Avenue Bikeway. Redevelopment opportunities within the gateway were prioritized higher by in-person respondents than online respondents. The safety and mobility improvements were well received by community members, with a desire to continue to invest in the neighborhood, including safe mobility and neighborhood commercial opportunities.

Online Results

Rank	Solution	Avg. Rank
1	Brunswick Avenue bikeway	2.81
2	West Excelsior Boulevard roadway design	2.88
3	Urban realm enhancements	3.88
4	Brunswick Avenue access change	4.13
5	Party City redevelopment opportunities	4.29
6	Reuse opportunities and shared parking	4.53
7	Zarthan Avenue access change	4.94
8	Jessen Press redevelopment opportunities	5.85

In-person Results

Rank	Solution	# of chips
1	West Excelsior Boulevard roadway design	27
2	Party City redevelopment opportunities	16
3	Jessen Press redevelopment opportunities	16
4	Urban realm enhancements	16
5	Reuse opportunities and shared parking	10
6	Brunswick Avenue bikeway	10
7	Brunswick Avenue access change	5
8	Zarthan Avenue access change	5



Excelsior Gateway Summary

Excelsior Gateway implementation and considerations

The following themes and messages were also heard from community members throughout the engagement process, focusing on the implementation and next steps for the Excelsior Gateway solutions.

General implementation

- Support for investment that supports the local neighborhood.

Mobility + access

- Parking throughout the gateway must be considered as redevelopment is occurring. Consider reduction of parking requirements.
- Excelsior is too busy and too fast - it doesn't need to be a quasi highway and should support walking, biking and connection to city amenities.
- Support for extending the median throughout all of Excelsior Boulevard
- Support for bike facilities with physical separation from driving lanes.
- Increase transit opportunities.
- Emphasize pedestrian safety enhancements (e.g., flashing beacons).

Land use + development

- Support for existing businesses.
- There is a lot of opportunity for the Excelsior gateway to be a destination within the community, but the roadway needs to be different.
- Consider more high density housing opportunities.
- Desire for more neighborhood commercial uses, including restaurants and shops.
- Support for the inclusion of row housing within the gateway as a other housing option.
- Support for mixed use development.



Parks + natural systems

- Disconnect from local parks and recreation should be considered as residential development is pursued.



community members signed up for more information or identified a desire to be a part of implementation!