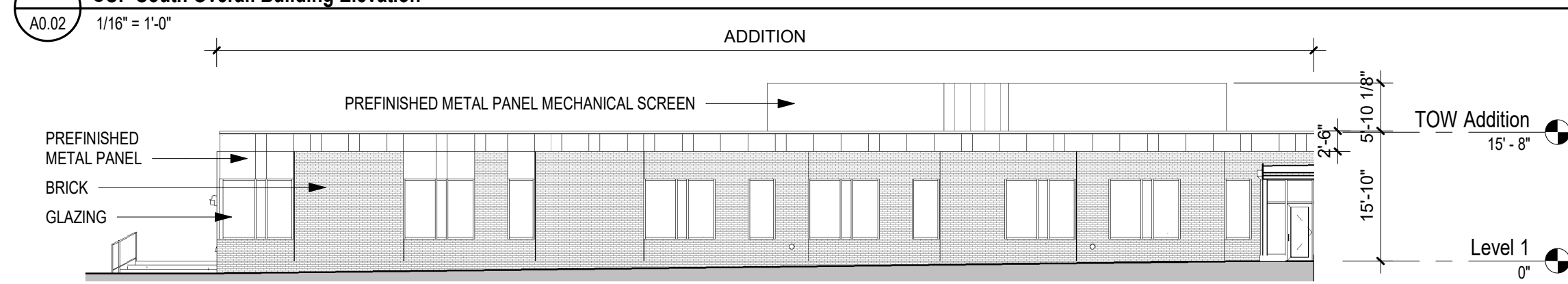
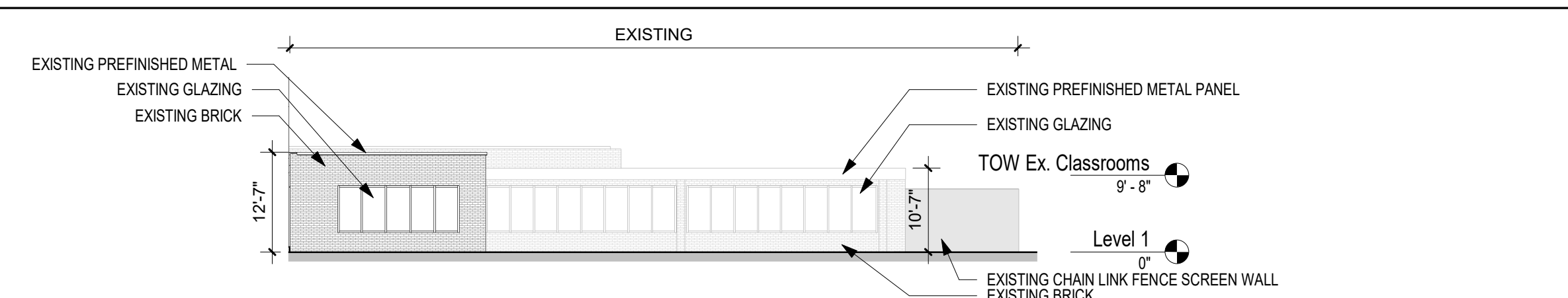


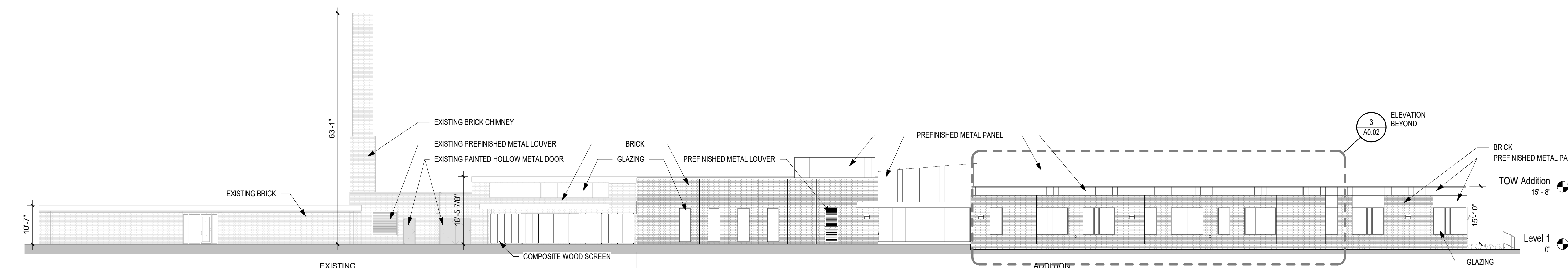
1 CUP South Overall Building Elevation



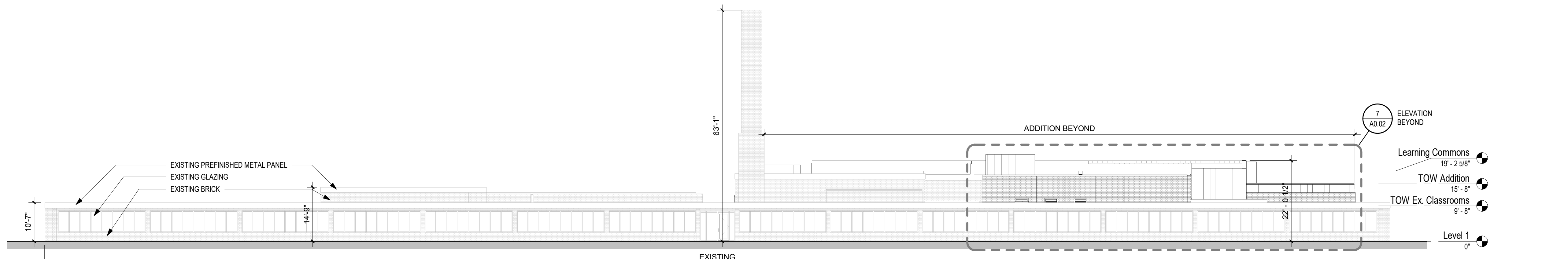
2 CUP South Partial Building Elevation



3 CUP North Courtyard Partial Building Elevation



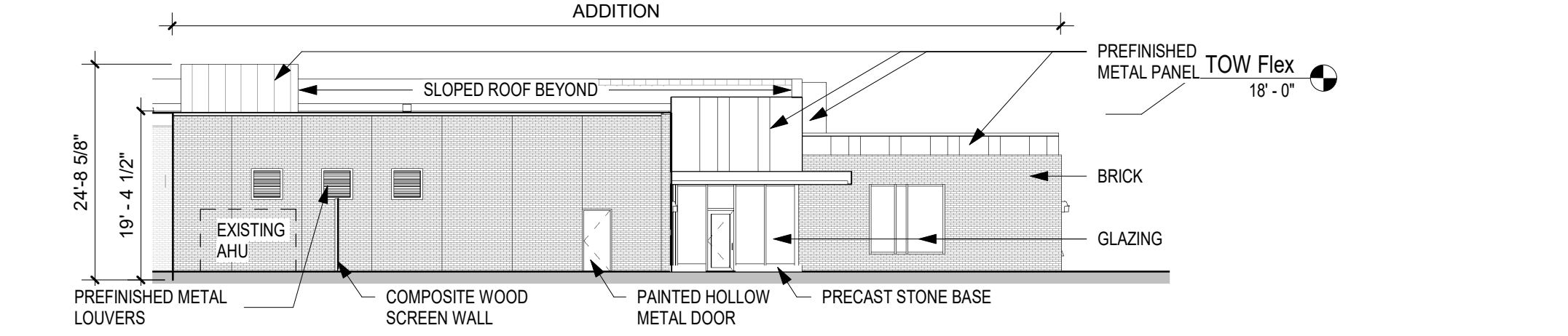
4 CUP North Overall Building Elevation



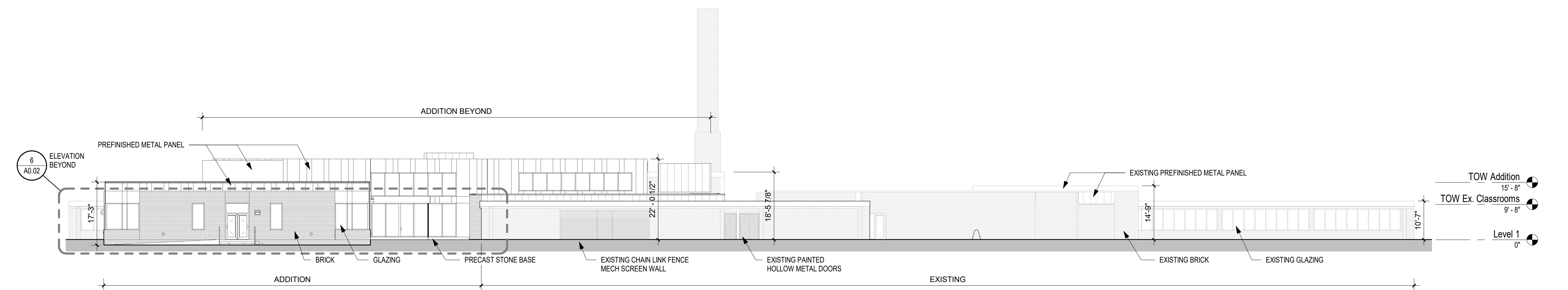
5 CUP East Overall Building Elevation



6 CUP West Partial Building Elevation



7 CUP East Partial Building Elevation



8 CUP West Overall Building Elevation

**CUP APPLICATION SET
NOT FOR CONSTRUCTION
08/19/2024**

Revisions		
No.	Date	Description

AQUILA BUILDING FACADE MATERIALS

	OVERALL SQUARE FEET	FACADE			
		NORTH (SF)	SOUTH (SF)	EAST (SF)	WEST (SF)
CLASS 1 MATERIALS					
	BRICK SF (% OF FACADE)	4511 (56%)	3666 (46%)	3224 (44%)	3302 (44%)
	GLASS SF (% OF FACADE)	1419 (17%)	2090 (26%)	2263 (31%)	1929 (26%)
	INTEGRAL COLORED CAST STONE (% OF FACADE)	17 (<1%)	2 (<1%)	6 (<1%)	18 (<1%)
CLASS 2 MATERIALS					
	PREFINISHED METAL SF (% OF FACADE)	1655 (20%)	2202 (28%)	1483 (20%)	2046 (27%)
CLASS 3 MATERIALS					
	PAINTED METAL COMPOSITE WOOD CHAIN LINK (% OF FACADE)	524 (6%)	0 (0%)	316 (4%)	257 (3%)
	PERCENTAGE OF CLASS 1 MATERIALS	73%	72%	75%	70%

Project Information
Phase: CD Date: 08/19/2024
Project No.: 23-0217 PIC/AIC: JP/PL
Aquila Elementary School

Sheet Title
CUP Exterior Elevations

Sheet Number: A0.02 Current Revision:

A0.02