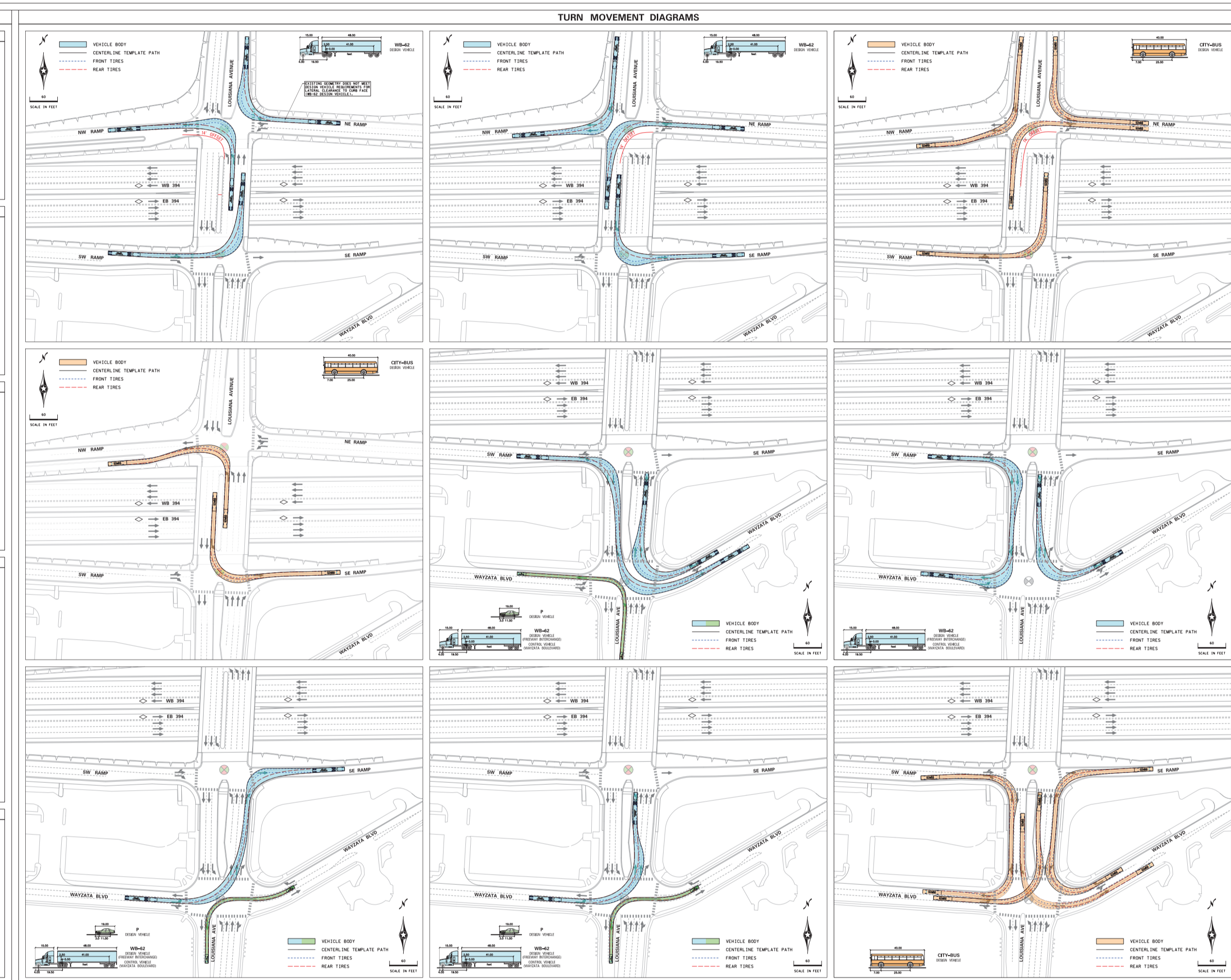
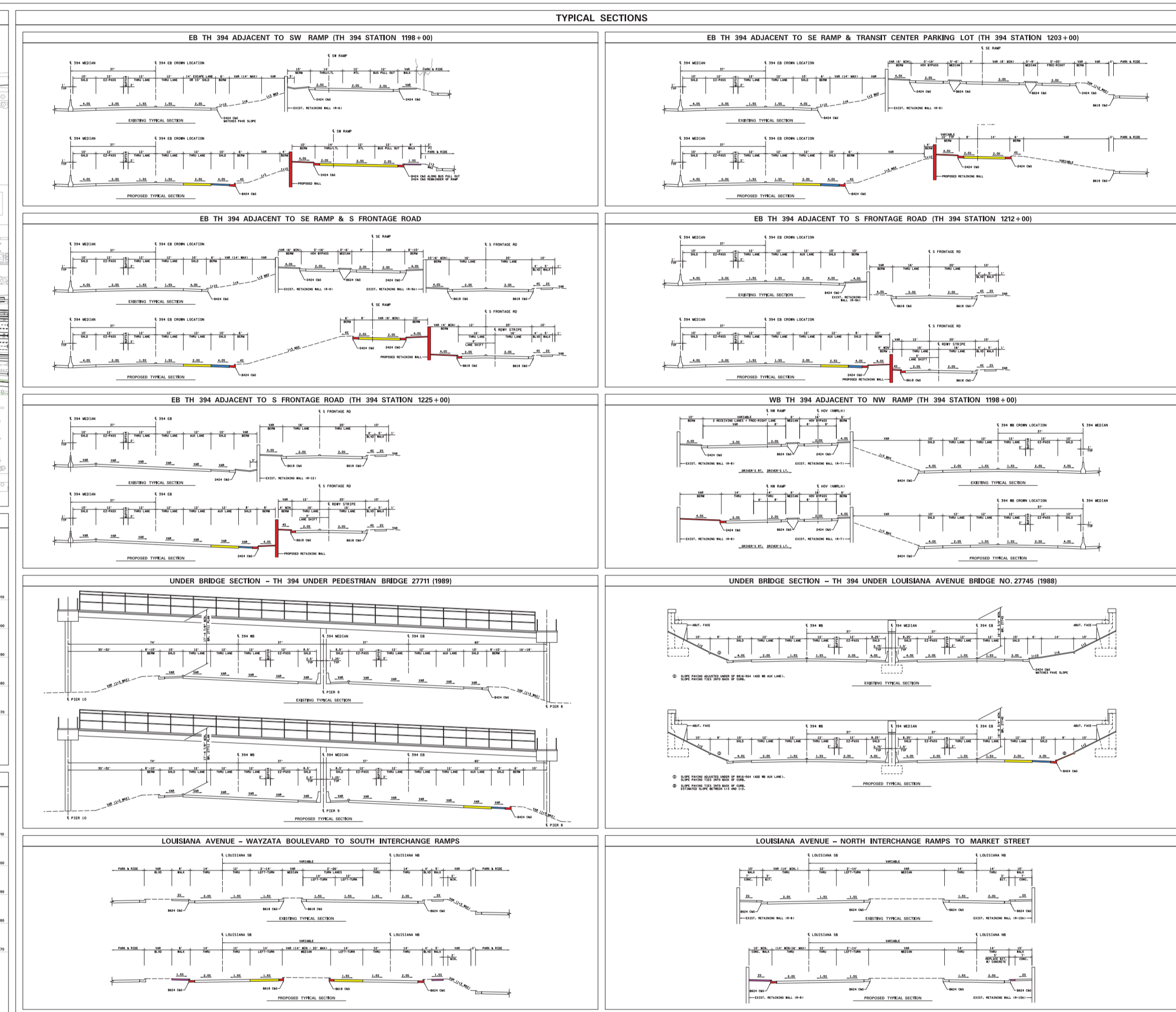
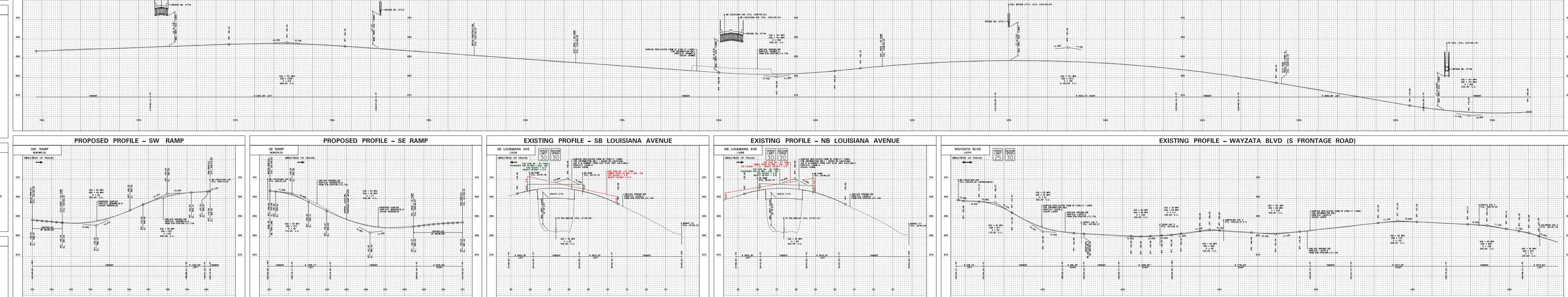


**PROJECT PURPOSE AND NEED STATEMENT**  
The purpose of this project is to improve the safety and efficiency of the roadway through the intersection of the project roadway and the existing roadway. The project will include the construction of a new roadway, the widening of the existing roadway, and the construction of a new interchange. The project will also include the construction of a new bridge over the existing roadway. The project will be completed in two phases. The first phase will include the construction of the new roadway and the widening of the existing roadway. The second phase will include the construction of the new interchange and the new bridge. The project will be completed by the end of 2025.



**LAYOUT HISTORY**  
The layout history shows the progression of the project from the initial conceptual design to the final construction documents. It includes a list of all layout sheets and a description of the changes made to each sheet. The layout history is as follows:  
1. LAYOUT SHEET 101 - Initial conceptual design.  
2. LAYOUT SHEET 102 - Revised conceptual design.  
3. LAYOUT SHEET 103 - Preliminary design.  
4. LAYOUT SHEET 104 - Final design.  
5. LAYOUT SHEET 105 - Construction documents.

**LAYOUT NOTES**  
The layout notes provide additional information about the project, including a list of all notes and a description of the changes made to each note. The layout notes are as follows:  
1. LAYOUT NOTE 101 - General notes.  
2. LAYOUT NOTE 102 - Specific notes.  
3. LAYOUT NOTE 103 - Construction notes.

**DESIGN EXCEPTIONS**  
The design exceptions list any deviations from the standard design criteria that were used for this project. The design exceptions are as follows:  
1. DESIGN EXCEPTION 101 - Deviation from standard design criteria.  
2. DESIGN EXCEPTION 102 - Deviation from standard design criteria.

