

# Park Perspective

Fall 2024

[www.stlouisparkmn.gov](http://www.stlouisparkmn.gov)



Find out about Howl-O-Ween and other upcoming fall city events on page 8.

## Inside this newsletter

City looks to revise strategic priorities..... 2  
 Defibrillators in four city parks .....3  
 New building developments.....4  
 Steps for voting early.....5  
 Submit for Name-a-Snowplow contest .....6  
 Fall collection service schedules.....7  
 Movies in the Park.....8

*This is the official city newsletter of the City of St. Louis Park. It's printed on 30% post-consumer recycled paper in an effort to meet the city's environmentally preferable purchasing policy.*

PRSR-T STD  
 U.S. Postage  
 PAID  
 Twin Cities, MN  
 Permit No. 603



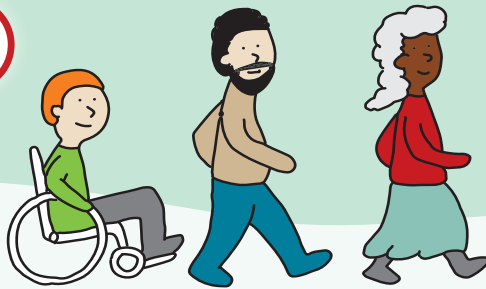
## 2024 Fire Department Open House

**Sept. 17, 5 – 7:30 p.m. • Fire Station 1, 3750 Wooddale Ave. S.**

Join fellow community members for St. Louis Park's annual Fire Department Open House, a free, all-ages event featuring food, drinks, hands-on equipment displays, live-burn demonstrations, photo stations, vehicles to explore, educational booths and more! Flip to page 3 for more details.

## Join our team! Become St. Louis Park's next fire chief

The City of St. Louis Park will soon begin its search for a dynamic leader to head the St. Louis Park Fire Department. Interested candidates should email the city's human resources department at [hr@stlouisparkmn.gov](mailto:hr@stlouisparkmn.gov) for more details. Mike Scott, retired chief of the Eagan Fire Department, is serving as the department's interim fire chief until the new chief is selected.



NOVEMBER

S	M	T	W	T	F	S
					1	2
3	4	5	6	7	8	9
10	11	12	13	14	15	16
17	18	19	20	21	22	23
24	25	26	27	28	29	30

# General election 2024

**Tuesday, Nov. 5 ★ Early voting starts Sept. 20**

Polls will be open 7 a.m. – 8 p.m. Nov. 5 in St. Louis Park for the 2024 general election. Residents can vote early in person at city hall, 5005 Minnetonka Blvd., or by mail starting Sept. 20.



### Where can I vote?

To find your Election Day polling place, visit [mnvotes.gov/pollfinder](http://mnvotes.gov/pollfinder), call 952.924.2503 or scan the QR code.

Early in-person voting will be available in St. Louis Park City Hall, 5005 Minnetonka Blvd. (Find in-person early voting hours on page 5.)

### When can I vote?

Polling places will be open 7 a.m. – 8 p.m. on Election Day, Nov. 5. Early in-person and mail voting is Sept. 20 through Nov. 4. (Details on page 5.)

### What offices are on the ballot?

All voters will have these races on the general election ballot: president, U.S. senator, U.S. representative, state representative and judicial seats. Visit [myballotmn.sos.mn.gov](http://myballotmn.sos.mn.gov) for a sample ballot specific to your location.

For more details on elections and voting, flip to page 5 of this newsletter, call 952.924.2503, email [elections@stlouisparkmn.gov](mailto:elections@stlouisparkmn.gov) or visit [www.stlouisparkmn.gov/vote](http://www.stlouisparkmn.gov/vote).



## NOW HIRING!

Experience LIFE in the Park

as a City of St. Louis Park paid intern or full-time employee!

Visit [www.stlouisparkmn.gov/employment](http://www.stlouisparkmn.gov/employment) or scan the QR code today!





## Apply for an Arts & Culture Grant

The Arts & Culture Grant program is a collaborative program between the City of St. Louis Park, the Park Public Schools & Community Foundation and St. Louis Park Friends of the Arts. The program makes grant dollars available every year for music, visual arts, theater, film, multimedia, dance and other art projects. It provides funding for new arts programs that support community pride, connect artists and the community, and engage people in creative learning. Artists, arts groups, students, community groups and neighborhood, cultural and religious organizations are encouraged to apply. Applicants don't need to live in St. Louis Park, but projects must take place within the city. Applications for 2024 grants are due Sept. 22.

Visit [www.stlouisparkmn.gov/our-city/arts-and-culture-grant-application](http://www.stlouisparkmn.gov/our-city/arts-and-culture-grant-application) for the application and guidelines.

## Truth-in-taxation notices and public hearing

Truth-in-taxation notices are mailed in November. They show the proposed property tax amount for the following year for each taxing jurisdiction and include the meeting dates where you can provide input. A truth-in-taxation public hearing will be held in the City Hall Council Chambers Dec. 2, 6:15 p.m. Visit [www.stlouisparkmn.gov/finance](http://www.stlouisparkmn.gov/finance) for more details. Keep an eye out for the winter Park Perspective for more about the 2025 proposed city budget.

## Join the city's charter commission

The St. Louis Park Charter Commission has 15 members appointed by the chief judge of Hennepin County District Court. The group's mission is to evaluate and propose changes that are warranted in the city's home rule charter as provided by state statute. The charter is like the city's constitution. Charter board members also monitor legislative activities on an ongoing basis. Members serve as volunteers. A staff liaison provides assistance to record minutes, prepare agendas and perform other ministerial duties. Interested in becoming a member of the charter commission? Visit [bit.ly/SLPcharter](http://bit.ly/SLPcharter) for applications.

## Follow the city's strategic priorities

The symbols below represent the five core priorities of the City of St. Louis Park and its city council. Spot them throughout this newsletter.



Being a leader in racial equity and inclusion in order to create a more just and inclusive community for all.



Continuing to lead in environmental stewardship.



Providing a broad range of housing and neighborhood-oriented development.



Providing a variety of options for people to make their way around the city comfortably, safely and reliably.



Creating opportunities to build social capital through community engagement.

Visit [www.stlouisparkmn.gov/our-city/about-us](http://www.stlouisparkmn.gov/our-city/about-us) to learn more about the St. Louis Park leadership priorities.

## Vision 4.0

Every 10 years, the City of St. Louis Park reviews and updates the strategic priorities that city leadership and elected officials use to guide planning and decision-making over the next decade (see icons to the left). The process has started again in 2024, with elected officials, city staff and community members getting to work on Vision 4.0.

Over the next year, there will be several opportunities for community members to get involved and offer input. A community committee will provide ongoing feedback on the visioning process, with members acting as community ambassadors to help the city connect more people to the process.

Visit [www.stlouisparkmn.gov/vision](http://www.stlouisparkmn.gov/vision) to learn more about the Vision 4.0 process or to sign up for email updates.

## Stay informed

To talk to someone in person, visit city hall at 5005 Minnetonka Blvd., during business hours, Monday – Friday, 8 a.m. – 4:30 p.m. Can't make it out? Call the main number during business hours at 952.924.2500 or try one of our many online resources.

For city events, activities, schedules and news updates, visit [www.stlouisparkmn.gov](http://www.stlouisparkmn.gov), sign up for text and email notifications through govDelivery, or follow us on social media.

 govDelivery [www.stlouisparkmn.gov/sign-up](http://www.stlouisparkmn.gov/sign-up)



@stlouispark



@stlouispark



nextdoor.com



[www.youtube.com/slpcable](http://www.youtube.com/slpcable)



@stlouisparkmn

Make service requests or receive city information via the app

 my stlouispark or visit [www.mystlouispark.org](http://www.mystlouispark.org).



## Contact mayor and city council

**Nadia Mohamed, mayor**  
nmohamed@stlouisparkmn.gov  
952.207.0256

**Lynette Dumalag, ward 2**  
ldumalag@stlouisparkmn.gov  
612.449.0989

**Yolanda Farris, at large A**  
yfarris@stlouisparkmn.gov  
952.374.8868

**Sue Budd, ward 3**  
sbudd@stlouisparkmn.gov  
612.523.5834

**Paul Baudhuin, at large B**  
pbaudhuin@stlouisparkmn.gov  
612.523.4359

**Tim Brausen, ward 4**  
tbrausen@stlouisparkmn.gov  
612.523.5678

**Margaret Rog, ward 1**  
mrog@stlouisparkmn.gov  
612.523.5702

The city council meets regularly at city hall the first and third Monday of the month at 6:15 p.m. with study sessions the second and fourth Monday at 6 p.m.



## Fire Department Open House

Sept. 17, 5 – 7:30 p.m., Fire Station 1, 3750 Wooddale Ave. S.

### Displays:

- Fire trucks and equipment
- Community risk reduction information
- Kitchen safety
- Emergency preparedness
- EMS Bike Patrol
- Community Emergency Response Team
- Historic 1928 fire truck
- Hennepin Healthcare ambulance
- Police squad vehicle
- Public works heavy equipment
- Mobile recreation Park 'N Play van
- City departments

### Demonstrations:

- Hands-only CPR
- First aid
- Fire extinguishers
- Grease fires
- Fire sprinkler/burn rooms

### For kids:

- Sparky the fire dog
- Squirt house
- Electronic fire extinguishers
- Home fire drills and escape plans
- “Stay low as you go” smoke escape

### Food:

- Hot dogs
- Chips
- Popsicles
- Water

### Shuttle transit and other details

Visit [bit.ly/SLPfireopenhouse](http://bit.ly/SLPfireopenhouse) to learn about nearby parking, where and when you can grab a shuttle to the event, and other details.



## Don't leave your car running unattended

While it's tempting in the colder months, warming up your car by leaving it running unattended is one of the most common causes of vehicle theft. It creates an easy target for thieves on the lookout for crimes of opportunity. It also wastes gas and pollutes the air (see story below on the city's idle reduction initiative).

In addition to the negative consequences of letting your car idle, it's not an efficient way to warm up your vehicle. The best way to warm up a vehicle is to drive slowly during the first mile.



## Permits required for recreational fires

Permits are required for recreational fires (in-ground fire pits, portable fire pits, fire bowls, chimineas, etc.). Natural gas and propane fire pits and fireplaces don't require a recreational fire permit.

Visit [www.stlouisparkmn.gov/firepermit](http://www.stlouisparkmn.gov/firepermit) to view or print the permit application and to find complete information and regulations.

Fires must be 25 feet away from any structure, and you may only burn clean, dry firewood. Do not have a fire if winds are more than 10 miles per hour or when still weather conditions prevent the smoke from moving away. Fires are prohibited when the Minnesota Department of Natural Resources has declared a burning ban or the Minnesota Pollution Control Agency has issued an air quality alert. Visit [www.dnr.state.mn.us](http://www.dnr.state.mn.us) or [www.pca.state.mn.us](http://www.pca.state.mn.us) to learn more.



## External defibrillators installed in parks

Thanks to a public safety aid grant, the parks and recreation department has installed four external AEDs (automated external defibrillators) in St. Louis Park. The new AEDs are in climate-controlled cabinets at Aquila Park, Wolfe Park, Louisiana Oaks Park and Westwood Hills Nature Center and are available for use at any time. These units are set up on a monitoring system to help keep our community a safe place to recreate for all.

## Go idle-free in SLP, request a no-idle sign

Car exhaust has been linked to numerous health risks, including asthma, cognitive impairment, heart disease and even cancer, and running an engine while parked can produce as much if not more pollutants than driving. Children are particularly vulnerable because they breathe more air per pound of body weight than adults. Idling also harms the engine and wastes gas. Ten seconds of idling uses more fuel than stopping and restarting the engine, according to a study by the Argonne National Laboratory for the U.S. Department of Energy.

Join the city's campaign to limit idling! You can request a free aluminum idle-free sign for your commercial or multifamily parking lot. Email [erabine@stlouisparkmn.gov](mailto:erabine@stlouisparkmn.gov) to request a sign or for more details.



## When will the Holiday Train visit St. Louis Park?

Visit [www.cpr.ca/en/holiday-train/united-states](http://www.cpr.ca/en/holiday-train/united-states) or scan the QR code for schedule announcement. The train generally stops mid-December.



# Bring warmth and energy savings to your home

Keeping your home warm throughout winter is expensive, but there are ways to lower costs and funds that can help.

## Funding available to help make your home energy efficient

If your home needs energy efficiency improvements, cost-share funding is available to help you complete projects like air sealing and insulation, furnace and air conditioner replacements, and cold climate air source heat pump installation. The first step is to apply for a city-discounted Home Energy Squad planner visit. Residents of St. Louis Park qualify for a 50% discount, and income-qualified residents are eligible for free Energy Squad visits. Call 651.328.6220 or visit [www.mncee.org/home-energy-squad](http://www.mncee.org/home-energy-squad) to sign up.



At your visit, you'll learn how your home uses energy and what energy-saving opportunities can lower utility bills. Energy experts can also install materials such as LED light bulbs, door weather stripping and more. After your visit, apply for the city's Climate Champions cost-share funding at [www.stlouisparkmn.gov/climate-champions](http://www.stlouisparkmn.gov/climate-champions) for matching rebates for 50% to 200% of project costs.

# Interactive dashboard helps city keep track of Climate Action Plan goals

The City of St. Louis Park has a new online interactive dashboard that highlights and tracks the city's progress toward meeting Climate Action Plan goals. The creation of the Environmental Stewardship Dashboard was a collaborative effort from multiple city divisions, including sustainability, solid waste, natural resources and engineering, and serves to foster transparency between the city and the community. Visit [www.stlouisparkmn.gov/sustainability](http://www.stlouisparkmn.gov/sustainability) to access the dashboard and for additional sustainability resources and maps.

## About the city's Climate Action Plan

In 2018, the St. Louis Park City Council passed a Climate Action Plan with the ambitious goal of achieving carbon neutrality — having a net zero carbon footprint — by 2040. The plan provides guidance for residents, businesses and the city on reducing greenhouse gas emissions and impacts of climate change. To achieve the goals outlined in the Climate Action Plan, the city has implemented energy efficiency practices, increased renewable energy usage and made other operational improvements.

Visit [www.stlouisparkmn.gov/climate-action-plan](http://www.stlouisparkmn.gov/climate-action-plan) to find out more about the Climate Action Plan, view progress toward goals, sign up for email updates or request an in-person presentation from sustainability staff.



## Westwood Hills Nature Center manager receives community service award

Mark Oestreich, Westwood Hills Nature Center manager, was awarded the Gil Braun Community Service Award by the St. Louis Park Rotary Club this June. The annual award spotlights exemplary community leadership and service in the City of St. Louis Park. Oestreich joined Westwood Hills Nature

Center as a naturalist in 1990, becoming manager of the nature center 10 years later. He played a major role in the planning of the state-of-the-art, zero-energy certified interpretive center built at Westwood in 2020. He's dedicated his years of service to teaching, sharing and promoting the world of nature around him to visitors and students of all ages. As an active member of the Minnesota Naturalist Association and Association for Nature Center Administrators, he continues to be a model to others in the field.

# NEW DEVELOPMENTS



The City of St. Louis Park regularly works with interested developers in the city. Community development staff engage in the following priorities (see page 2). With thoughtful planning, new developments can curb environmental impacts, attract new residents, and grow the city's tax base. Highlighted below are the eight most recent developments.

## Arbor Court



3755 Wooddale Ave. (Real Estate Equities)

Located on the former Aldersgate Church site, this all-affordable workforce housing development has 114 residential units. The development includes five units affordable to households earning up to 30% of area

median income, five units affordable to households earning up to 50% of area median income and 104 units affordable to households earning up to 60% of area median income. A new left turn lane from the Highway 100 exit ramp onto Wooddale Avenue was constructed as part of the development.

## Caraway



5235 Wayzata Blvd. (Greystar Real Estate Partners)

This six-story, 207-unit apartment building in The West End area includes eight units affordable to households earning up to 60% of area median income. The development has numerous residential amenities, a new pocket

park along 16th Street and pedestrian improvements connecting the apartment building to the rest of The West End area.

## Corsa



3440 Beltline Blvd. (Opus Group)

This 250-unit, mixed-income, mixed-use building includes 25 units affordable to households earning up to 50% of area median income and has 7,700 square feet of commercial space available for lease. It also includes

structured and surface parking, outdoor greenspace, a large indoor gym, community rooms, pickleball courts, electric vehicle charging opportunities, a rooftop amenity deck with a pool and a large public mural painted by Adam Turman.

## Mera



9808 and 9920 Wayzata Blvd. (Bigos Management)

This six-story, 233-unit apartment building includes a courtyard with a pool and spa, dog run, outdoor pickleball courts and a rooftop amenity deck. It also has 325 parking stalls primarily located in structured

parking inside the building, as well as a new underground stormwater management system. The development will provide 47 units affordable to households earning up to 50% of area median income.

The city is involved in several other major redevelopment projects. Information on those projects can be found at [www.stlouisparkmn.gov](http://www.stlouisparkmn.gov). For specific questions, contact Jennifer Monson, redevelopment manager.

# EXPAND HOUSING OPTIONS

ted investors to help plan for and guide redevelopment throughout these projects to guarantee that they reinforce the city's strategic new developments expand housing options, boost the economy, address building obsolescence issues and broaden the city's tax y completed major redevelopment housing projects in the city.

## Rise on 7



8115 Highway 7 (CommonBond Communities)

This four story all-affordable development located on the south side of Highway 7 has 120 affordable units with income restrictions ranging between 30% to 60% of area median income. The building includes outdoor play areas and community rooms. It's also home

to Rise Early Learning Center, a nonprofit that focuses on providing affordable, high-quality early childhood education.

## Risor



3510 Beltline Blvd. (Roers Companies)

This five-story, 170-unit apartment building located along Beltline Boulevard is St. Louis Park's newest 55+ mixed-use, mix-income, multifamily housing. It includes 18 units affordable to households earning up to 50% of area median income, 14 ground-floor

live/work units, and 4,100 square feet of commercial space. The building includes pedestrian paths, a rooftop amenity deck with a pool and pickleball courts, electric vehicle charging and several residential community spaces.

## Volo at Texa Tonka



7920 Minnetonka Blvd. (Paster Properties)

This development includes a 101-unit, four to five story multifamily building on the northeast corner of Texas Avenue and Minnetonka Boulevard, and an 11-unit, two story townhome building on the north half of the site. Both buildings provide walk-up

units for residents, and 20% of the units are affordable at 50% area median income. Wandering Rhythms, a public art installation by Lori Greene and Juliette Perine Myers, was installed near 29th Street as part of this development.

## Zelia on Seven



5725 Highway 7 (Bigos Management)

Zelia on Seven (formerly Via Sol), near the Wooddale Avenue Light Rail Station, includes 217 residential units, including 18 live/work units. The development has 22 units affordable to households earning up to 50% of area median income, 65 units

affordable to households earning up to 60% of area median income and 130 market rate units. The development boasts a 1-acre urban forest and three public art installations.

*All eight of these developments were built to meet LEED or National Green Building standards. Each of them also have a significant amount of affordable housing that will remain affordable for at least 25 years.*

Projects currently in the approval, planning or construction phases. [stlouisparkmn.gov/development-projects](http://stlouisparkmn.gov/development-projects) and in future Park Perspectives. Development administrator, at [jmonson@stlouisparkmn.gov](mailto:jmonson@stlouisparkmn.gov).



# Make a plan to vote!

*(continued from page 1)*

## In-person early voting

Sept. 20 is the first day to vote early in person for the general election. In-person early voting takes place at St. Louis Park City Hall during regular business hours, 8 a.m. – 4:30 p.m., Monday through Friday. There will also be extended hours for early voting Saturday, Oct. 26, 9 a.m. – 3 p.m., Tuesday, Oct. 29, 8 a.m. – 7 p.m., Saturday and Sunday, Nov. 2 – 3, 9 a.m. – 3 p.m., and the Monday before Election Day, Nov. 4, 8 a.m. – 5 p.m.

Before you receive a ballot, you need to complete an absentee ballot application. Applications will be available at city hall; you don't need to complete one prior to coming.

## Vote by mail

To vote early by mail starting Sept. 20, you first need to fill out and submit an absentee ballot application. Find online applications at [mnvotes.gov/absentee](http://mnvotes.gov/absentee) or call 952.924.2503 to request a paper application be mailed to you. Read the application instructions closely and follow all the necessary steps.

## Are you registered?

Check registration status at [mnvotes.sos.mn.gov](http://mnvotes.sos.mn.gov) or call 952.924.2503 at least one month before Election Day. You can register to vote on Election Day or at least 20 days before Election Day. The online registration deadline is Oct. 15, 2024. If registering by mail, applications must be received by Oct. 15.

## Where to find more information

This October, all households in St. Louis Park will receive a 2024 general election guide newsletter in the mail. If you have more questions, that's a great place to start. You can also visit [www.stlouisparkmn.gov/vote](http://www.stlouisparkmn.gov/vote) for information on St. Louis Park voting.

For general information about voting, visit the Secretary of State's website, [www.sos.state.mn.us/elections-voting](http://www.sos.state.mn.us/elections-voting). You may also call the city's elections office at 952.924.2503 or visit in person during business hours on the third floor of city hall, 5005 Minnetonka Blvd.



## Safe Streets Action Plan aims to make roads safer for all users

St. Louis Park is developing a Safe Streets Action Plan to prevent, reduce and eliminate serious injury and deadly accidents for everyone using the roads in the community.



The city needs community input to help identify areas of safety concern and ensure the recommendations for the action plan reflect community values.

Scan the code or visit [bit.ly/slpsafestreetsplan](http://bit.ly/slpsafestreetsplan) to:

- Learn more about the project and related events
- Map your comments on the interactive map
- Sign up for project updates
- Apply to be on the community stakeholder committee





The winners of 2023's snowplow naming contest Rebecca Thelan (far right), her 4-year-old great niece Lorelei and family posed last winter with public works crews and the freshly labeled snowplow The Big Snowplowski.

## Name a snowplow! Submit your ideas for 2024

Help us name a St. Louis Park snowplow! Submit your punniest, most creative, most snow-tastic ideas to [bit.ly/snowplow-name-contest](https://bit.ly/snowplow-name-contest) between Sept. 13 and Oct. 4. Public works staff will narrow down submissions to their 10 favorites, which will be posted on social media and the city website Oct. 21 through Nov. 1 for residents to vote on their favorite name.

The winning name will be announced in the winter Park Perspective and then shared on the city website and social media. The lucky individual(s) or family who submit the winning name will get to personally add the name to the snowplow, take a photo with the plow and crew, and ride in the plow.

Rebecca Thelan and her great niece Lorelei won the city's inaugural snowplow naming contest in 2023 (see photo above), with their submission The Big Snowplowski, which residents might spot during the next snowstorm!

### Make way for The Big Snowplowski: snowplow reminders

After an inch or more of snowfall, the city plows 116 miles of roads, 52 miles of sidewalks, 30 miles of trails and 21 miles of alleys — and often more than once. It takes a crew of 30 workers roughly 12 hours to clear all streets during an average 3- to 6-inch snowfall. Heavier or wetter snowfalls require more time. In a snow event, high-volume roads are plowed first; residential streets and cul-de-sacs are next. If parking on the street during a snow event, try not to park directly across from another vehicle. After snow piles up, cars parked on both sides of the street can make the roadway too narrow to get through, which can block emergency vehicles.

To learn more about snowplows, snow emergencies, parking ban guidelines and more, visit [www.stlouisparkmn.gov/snow](https://www.stlouisparkmn.gov/snow) or call 952.924.2562.



## Dead-end fire hydrant flushing this fall

The city will be flushing dead-end fire hydrants Sept. 23 – 27 and Sept. 30 – Oct. 4. Flushing hours will be from 7 a.m. – 5 p.m. As always, the estimated dates are based on the weather, current maintenance needs or emergencies that staff need to address.

This process will be mainly on dead-end streets or cul-de-sacs and is necessary to maintain water quality. Any one neighborhood or area won't be affected for the entire week. Once a watermain is flushed, city crews will move to the next one. Residents can check to see if watermains have been flushed in their neighborhood by visiting [bit.ly/WMflushing](https://bit.ly/WMflushing) to view a map. If you have questions, call public works at 952.924.2562.

## How will I know if there's a snow emergency?

The city announces snow emergencies in several ways. Use any of the following to find out if a snow emergency has been declared:

- Watch the city website at [www.stlouisparkmn.gov](https://www.stlouisparkmn.gov) or visit [www.slpsnow.com](https://www.slpsnow.com).
- Visit [www.slpsnow.com](https://www.slpsnow.com) to sign up for ParkAlert, the city's citizen notification system.
- Download the mystlouispark app for Apple or Android devices. The app will display an alert when a snow emergency is in effect.
- Follow the city's social media sites on Facebook and Instagram (@stlouispark), as well as Nextdoor (nextdoor.com).
- Visit [www.stlouisparkmn.gov/sign-up](https://www.stlouisparkmn.gov/sign-up) to register for govDelivery email and text notifications for snow emergencies and other events.
- Call 952.230.0743 for updates.
- Watch ParkTV ([www.parktv.org](https://www.parktv.org)) or the local television news stations (channels 4, 5, 9 and 11).

*Can't make it to city hall due to bad weather? Most services can be accessed online. See the "stay informed" list on page 2 for options.*

## Before it snows: Keep waterways clear

Leaves and other debris that get into storm drains pollute waterways and negatively impact the health of local plants and wildlife. They can also cause flooding. Here's how to help:

### Keep streets clear for street sweepers

If possible, avoid parking on streets during daytime hours. All city streets are swept at least twice a year – in the spring and again in the fall. Fall street sweeping starts in early October and continues until the snow falls. Even though "no parking" signs aren't posted for street sweeping since work is ongoing and contingent on weather conditions, cars parked on the street will still reduce the effectiveness of street sweeping and slow down the process.

### Do not rake leaves or blow grass clippings into the street

Excess leaves raked into the street can slow down or damage sweeping equipment and contribute to the pollution of area waterways. It's also against city code. Grass clippings and leaves in the street end up in local water bodies where they decompose and release harmful phosphorous. Visit [www.stlouisparkmn.gov/backyard-composting](https://www.stlouisparkmn.gov/backyard-composting) for tips on composting grass and leaves. Yard waste is also collected for pick up by the city's yard waste hauler (see page 7).

### Adopt a storm drain

Keeping storm drains clear of obstructions reduces the chance of flooding in the event of heavy rains and cuts down on waterway pollution. St. Louis Park residents are encouraged to adopt a storm drain near them by committing to keep it clear of leaves, trash and other debris. Visit [www.adopt-a-drain.org/map](https://www.adopt-a-drain.org/map) to sign up.



## Paper shredding event is Sept. 20

Bring your confidential documents to be shredded and recycled at the fall paper shredding event Sept. 20, 3:30 – 5:30 p.m. at the Municipal Service Center, 7305 Oxford St. Residents may bring up to five paper grocery bags worth of paper. Do not use lawn/leaf bags or plastic bags. Bikers or walkers will not be allowed to enter the event for safety reasons. Visit [www.stlouisparkmn.gov/cleanup](http://www.stlouisparkmn.gov/cleanup) or contact public works at 952.924.2562 for additional details. Note: Shredded paper isn't accepted in recycling or organics carts. Bring confidential papers to a shredding event to be shredded on-site and recycled.

## Fall recycling and reuse event is Sept. 24

The city's fall cleanup event, Sept. 24 from 3 – 6 p.m., will focus on recycling and reuse this year with changes to what will be accepted and new opportunities for reuse. The Tuesday date is offered to accommodate residents who can't attend Saturday cleanup events due to religious or other weekend obligations. Note: The 2025 spring cleanup event is planned for a Saturday and will accept the usual cleanup day items. Watch for a mailer in September with more details.

## Brush drop-off site open until Nov. 24

If you have excess leaves and grass clippings you want to get rid of before your next yard waste collection day, the city's brush drop-off site will be open Saturdays and Sundays through Nov. 24, and Tuesdays through Oct. 29 (weather permitting). There is no charge for St. Louis Park residents. A Minnesota ID, driver's license or utility bill is required as proof of residency. Call 952.924.2562 with questions.

Residents can drop off branches, brush, logs, grass clippings and leaves at the site during the dates and times listed below.

### Hours through Oct. 29

- Saturdays: 7 a.m. – 3 p.m.
- Sundays: noon – 4 p.m.
- Tuesdays: 8 a.m. – 4 p.m.

### Hours Nov. 2 – 24

- Saturdays: 7 a.m. – 3 p.m.
- Sundays: noon – 4 p.m.

The drop-off site is located at 6215 Cedar Lake Road with the entrance on the southeast side of the railroad tracks.

## Last week of yard waste collection Nov. 25 – 30

The last week for yard waste collection is the week of Nov. 25. If there is a significant snowfall before then, yard waste collection will end at that time. If this occurs, updates will be posted online at [www.stlouisparkmn.gov/yard-waste](http://www.stlouisparkmn.gov/yard-waste). Remember, yard waste must be in your own reusable containers, compostable bags or bundled separate from garbage. It must be set out by 7 a.m. to ensure collection, especially during peak season. It's illegal to throw yard waste in the garbage or to use traditional plastic bags for yard waste. Each bag, bundle or container should weigh no more than 40 pounds. Visit [www.stlouisparkmn.gov/yard-waste](http://www.stlouisparkmn.gov/yard-waste) for more information.

## Free Christmas tree collection Jan. 6 – 24

Christmas trees can be set out for collection on your regular collection day by 7 a.m. during the first three weeks of January for no charge. Residents who set trees out after the free collection period will be charged for bulk pickup. Bagged trees won't be collected. Remove all decorations and make sure your tree is not stuck in ice or snow before collection. Visit [www.stlouisparkmn.gov/garbage-recycling](http://www.stlouisparkmn.gov/garbage-recycling) for more details, including options for residents without collection service.

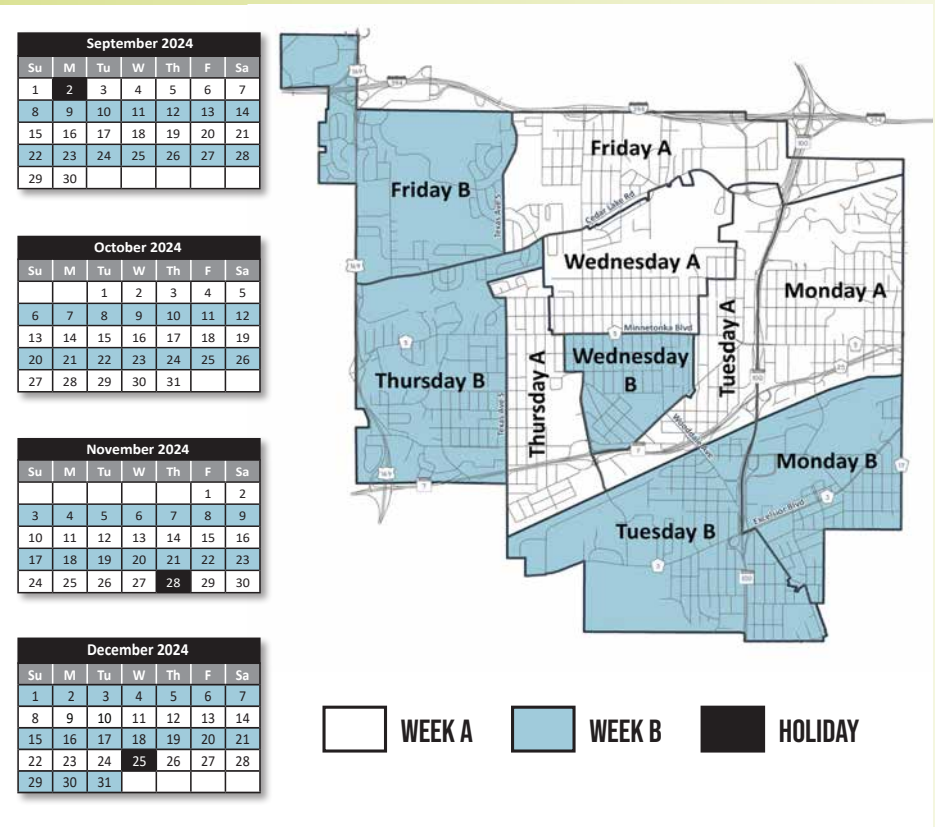
## Apply for tree-care fund assistance

Shade SLP Plus is an income-based, full-service city grant program to help property owners preserve, remove or reestablish trees on private land. Tree care is urgent right now due to the invasive emerald ash borer (EAB) beetle and its deadly impact on area ash trees. Visit [www.stlouisparkmn.gov/shade-slp-plus](http://www.stlouisparkmn.gov/shade-slp-plus) for funding applications.

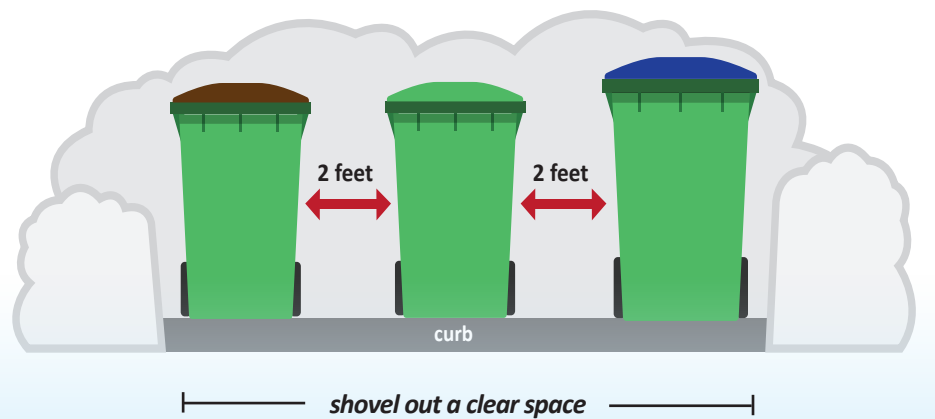
# Know your recycling day

For your convenience, the next four months of the recycling schedule are provided below. Visit [www.stlouisparkmn.gov/recycling](http://www.stlouisparkmn.gov/recycling) to download a yearly calendar, find your collection day or sign up for email reminders.

- If your normal service falls on or after a holiday, you will receive service one day later.
- Report missed pickups within two days of collection day to:
  - Garbage/recycling: 952.226.6457, SLP@buckinghamcompanies.com
  - Organics: 952.941.5174, SLP@republicservices.com
  - Yard waste: 612.405.9579, SLP@wastecontainersystems.com
- This calendar applies only to properties with city-provided recycling. Multifamily buildings are required to offer recycling to their tenants. Check with your building management or email city staff at [recycling@stlouisparkmn.gov](mailto:recycling@stlouisparkmn.gov) if you have questions about recycling collection at your building.



Collections are delayed one day all week after holidays that fall on a week day. Collections are not delayed for holidays that fall on weekends.



## Setting out carts during winter months

During winter months, keep the area where you place your carts for collection clear of snow. This helps crews safely access your carts. Carts set on top of snowbanks or buried underneath will not be collected. Carts should not be placed in the streets, alleys or sidewalks any time of year, but especially during the winter months because they interfere with snow removal operations.

### Setting out your carts for collection

Make sure your carts are out by 7 a.m. as collection times may vary.

- If you have curbside collection, place carts on your driveway or on the boulevard between the street and sidewalk. Ensure carts have at least 2 feet of space between them and surrounding objects.
- If you have alley collection, place carts on your property, driveway or beside your garage next to the alley. The 2-foot spacing noted above for curbside collection is not required for alleys.



# UPCOMING EVENT HIGHLIGHTS



## Be The Light Winter Solstice Walk

**DEC. 21, 6:30 – 8:30 P.M., ALL AGES**  
Westwood Hills Nature Center, 8300 W. Franklin Ave.

Join us on the shortest day of the year to remember that many in our community aren't able to "see the light" because of struggles with mental health or difficult situations. Follow the luminary walk through the forest guided by visual messages from the community. Light a candle in honor or memory of someone who struggles with or struggled with mental health. Gather around a fire in the glowing winter light. To share the light, create a luminary with your own message to take home. Register at [www.stlouisparkmn.gov/rec-registration](http://www.stlouisparkmn.gov/rec-registration).




## 43RD ANNUAL HALLOWEEN PARTY

**Oct. 18 and 19, 6:30 – 9 p.m., Westwood Hills Nature Center, 8300 W. Franklin Ave. Register by Oct. 9 for early bird discount.**

Join us for this family-friendly fall tradition! Come in costumes and enjoy a variety of indoor and outdoor activities. Boo-gie down to some Halloween tunes, play carnival style games and trick-or-treat with friendly animal characters on Mother Nature's Trail. Round out the evening with a puppet show and refreshments. Register at [www.stlouisparkmn.gov/rec-registration](http://www.stlouisparkmn.gov/rec-registration). Consider donating carved pumpkins to decorate the trails at this event. Pumpkins can be dropped off at the nature center on Thursday, Oct. 17, from 8 a.m. – 7 p.m.

## MOVIES IN THE PARK



**IF**  
**SATURDAY, SEPT. 28, 7:30 P.M.**  
Fern Hill Park

**THE ADDAMS FAMILY 2**  
**FRIDAY, OCT. 4, 7:30 P.M.**  
Browndale Park

## HOWL-O-WEEN



**ALL AGES • Oct. 13, noon – 3 p.m. • FREE**  
Wolfe Park, 3700 Monterey Drive

Visitors can stroll through the park with their pets, meet different vendors to redeem prizes and do a little shopping. At 2:30 p.m. there will be a costume contest for all pets with fantastic prizes.




## 10<sup>th</sup> annual U.G.L.Y. SWEATER DASH

**Dec. 8 • Race begins at 5:30 p.m.**

**Louisiana Oaks Park, 3520 Louisiana Ave. S. • Register: [www.stlouisparkmn.gov/rec-registration](http://www.stlouisparkmn.gov/rec-registration)**

The annual U.G.L.Y. Sweater Dash returns for its 10th year this December! The 5K course loops through Louisiana Oaks Park and the lighted trees of Oak Hill Park. Traditionally, participants and spectators wear their ugliest holiday sweaters and celebrate after the race at Park Tavern across the street. The event is for all ages. The registration fee is \$40 before Oct. 13, \$45 Oct. 14 – Dec. 7, and \$50 at the door and includes a goodie bag for participants.



### Other fall events and activities:

St. Louis Park Art Fair, Sept. 7; Minnehaha Creek Cleanup, Oct. 5; Goblins on Ice, Oct. 25; Skate School Fall Showcase, Nov. 9; Turkeys on Ice, Nov. 27; Small Business Saturday, Nov. 30; Disco Ball Ice Skating, Dec. 20; and more!

Visit [www.stlouisparkmn.gov/events](http://www.stlouisparkmn.gov/events) or scan the QR code for more details on city events and activities or to sign up for updates.



**Sept. 21, 5 – 9 p.m.**

Polka away under the ROC. Live music, food, beverages, beer, games and challenges!

