

Election Guide

Election Day is Nov. 5, polls open 7 a.m. – 8 p.m.



Experience VOTING in the Park

Contents

- How to register to vote..... 1
- How to vote by mail or in person 2
- Frequently asked questions..... 3
- What to expect at your polling place.... 4
- Tips for planning ahead 4

- ¿Necesita materiales y formularios de votación en español?
www.sos.state.mn.us/elections-voting/spanish
- Нужны материалы и бланки для голосования на русском?
www.sos.state.mn.us/elections-voting/russian
- Ma u baahantahay foomamka iyo agabka codata oo Soomaaliga ku qoran?
www.sos.state.mn.us/elections-voting/somali

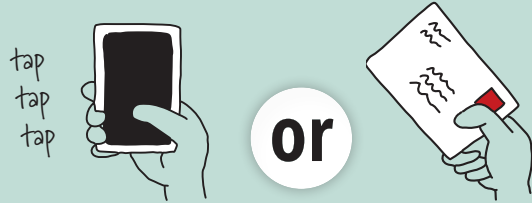
PRSR STD
U.S. Postage
PAID
Twin Cities, MN
Permit No. 603

How to register to vote

Registering to vote is simple, but it does require some planning ahead. If you're already registered, jump to the next page. If not, follow the steps below. You have three options.

Registering by Oct. 15

OCTOBER						
S	M	T	W	T	F	S
		1	2	3	4	5
6	7	8	9	10	11	12
13	14	15	16	17	18	19
20	21	22	23	24	25	26
27	28	29	30	31		



To register **online**, go to mnvotes.gov/register.
Follow all instructions and complete by Oct. 15.

To register **by mail**, download the form from mnvotes.gov/register.
By Oct. 15, return completed form to St. Louis Park City Hall or mail to:
Hennepin County Elections
300 South 6th St. MC 680
Minneapolis, MN 55487

Registering Oct. 16 – Nov. 5

OCTOBER							NOVEMBER						
S	M	T	W	T	F	S	S	M	T	W	T	F	S
		1	2	3	4	5						1	2
6	7	8	9	10	11	12	3	4	5	6	7	8	9
13	14	15	16	17	18	19	10	11	12	13	14	15	16
20	21	22	23	24	25	26	17	18	19	20	21	22	23
27	28	29	30	31			24	25	26	27	28	29	30



If you haven't registered by Oct. 15, you can register the same day you vote (whether you vote on or before Election Day) by showing proof of where you live to an election worker. Details provided on the next page.
We encourage you to register before Oct. 15 if possible.

Voting options on next page

Who can register to vote?

To be eligible to vote, you must be:

- At least 18 years old on Election Day
- A U.S. citizen
- A resident of Minnesota for 20 days
- Not currently incarcerated for a felony

Reminder: Voting rights have been restored for people serving a felony sentence who are no longer incarcerated.

Am I registered to vote?

Check your registration status at www.stlouisparkmn.gov/vote or call 952.924.2503 at least one month before Election Day.

What if I'm here for college?

Paying out-of-state tuition or having a driver's license from another state doesn't necessarily mean you can't vote in Minnesota. Register to vote from the address you currently consider home. For many students, this is likely a school address or a parent's house.

What about homelessness?

If you're experiencing homelessness, your current residence is the place where you sleep. If you sleep in a shelter, at a friend's house or outside somewhere, that is your voting residence. A registered voter from your precinct can go with you to the polling place to sign an oath confirming where you live.

In St. Louis Park, we vote. This fall, you have the opportunity to vote for representatives in federal, state and judicial offices. This guide takes you through your options and the steps to vote. Our goal is to ensure that you have all the information necessary to be a voter in St. Louis Park.

Make a plan to vote! You have three

Voting from

Sept. 20 to Nov. 4

SEPTEMBER						
S	M	T	W	T	F	S
1	2	3	4	5	6	7
8	9	10	11	12	13	14
15	16	17	18	19	20	21
22	23	24	25	26	27	28
29	30					

OCTOBER						
S	M	T	W	T	F	S
		1	2	3	4	5
6	7	8	9	10	11	12
13	14	15	16	17	18	19
20	21	22	23	24	25	26
27	28	29	30	31		

NOVEMBER						
S	M	T	W	T	F	S
					1	2
3	4	5	6	7	8	9
10	11	12	13	14	15	16
17	18	19	20	21	22	23
24	25	26	27	28	29	30



To vote **by mail**, you must first apply for an absentee⁽¹⁾ ballot.



Call us to request an application at 952.924.2503 during office hours, Monday – Friday, 8 a.m. – 4:30 p.m.
Or apply online at mnvotes.gov/absentee.



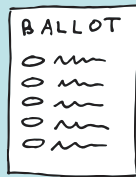
Mail completed application to:
Hennepin County Elections
300 South 6th St. MC 680
Minneapolis, MN 55487



Mail your request as early as possible! It takes time to process your request and mail the ballot to you.



Vote using the absentee ballot mailed to you.



Make sure both you and your witness⁽²⁾ sign the signature envelope in the space provided.



Mail the completed ballot in the provided envelope to:

Hennepin County Elections
300 South 6th St. MC 680
Minneapolis, MN 55487

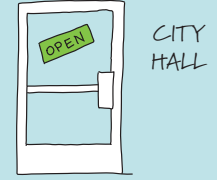
or

Drop off your completed ballot in the designated box outside city hall or at the 3rd floor service desk:

5005 Minnetonka Blvd.
St. Louis Park, MN 55416

Either way, your completed ballot must be received by 8 p.m., Nov. 5. Mail it back as early as you can!

or



To vote **in person**, visit city hall between Sept. 20 and Nov. 4, 8 a.m. – 4:30 p.m., Monday – Friday:

5005 Minnetonka Blvd.
St. Louis Park, MN 55416

City hall will also be open for in-person voting
Sat, Oct. 26 (9 a.m. – 3 p.m.), **Tue, Oct. 29** (8 a.m. – 7 p.m.),
Sat, Nov. 2 (9 a.m. – 3 p.m.), **Sun, Nov. 3** (9 a.m. – 3 p.m.),
Mon, Nov. 4 (8 a.m. – 5 p.m.)



Minnetonka Boulevard roadwork may delay traffic near city hall. Consider approaching from the south.

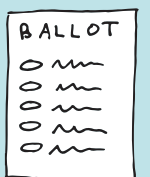
Complete an absentee⁽¹⁾ ballot application provided at city hall. You don't need to apply for an absentee ballot beforehand.



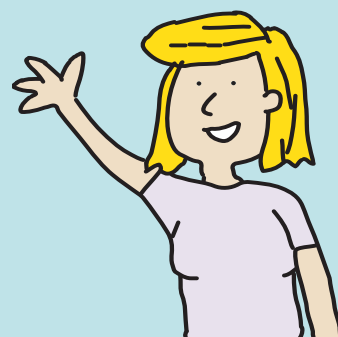
If you are not registered to vote or unsure if you are registered, bring proof of residency⁽³⁾ to city hall.



Vote on the absentee ballot provided at city hall.



Follow instructions from election workers to submit your ballot.



Congratulations! You voted!

(1) What's an absentee?

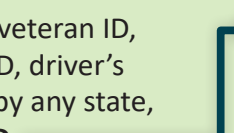
This is an election term that refers to anyone who wants to vote before Nov. 5 either by mail or in person.

(2) What's a witness for?

The witness confirms that you filled out the ballot. They can be either a registered Minnesota voter or a notary. Your witness must sign the signature envelope and list their address. Notaries should write their name and title, sign the signature envelope and affix their notary stamp.

(3) What are accepted forms of proof of residency?

Show your proof of residency one of seven ways:

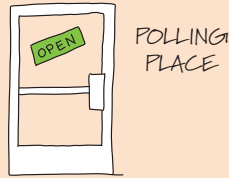
- Valid Minnesota driver's license, learner's permit or ID, or receipt for any of these; or tribal ID with name, address, photo and signature
- A valid or expired: U.S. military or veteran ID, U.S. passport, Minnesota college ID, driver's license or learner's permit issued by any state, or a Minnesota high school ID **AND**  A residential lease or rental agreement valid through Nov. 5 or a document with current name and address due or dated after Oct. 5 (bills for utilities, banking, student fees, rent or mortgage)
- College student ID that matches a student housing list on file
- Notice of late registration
- Staff person in your residential facility who can vouch for you in person
- Valid registration in the same precinct
- Registered voter who can confirm your address and vouch for you in person

Free voting options

Voting on

Election Day, Nov. 5

NOVEMBER						
S	M	T	W	T	F	S
					1	2
3	4	5	6	7	8	9
10	11	12	13	14	15	16
17	18	19	20	21	22	23
24	25	26	27	28	29	30



To vote **in person** on Election Day, visit your designated polling place⁽⁴⁾ between 7 a.m. and 8 p.m., Nov. 5.



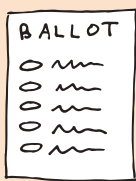
You can't vote at a location other than your designated polling place. Be sure you know where to go.⁽⁴⁾



If you are not registered to vote or unsure if you are registered, bring proof of residency⁽³⁾ with you.



Vote on the ballot provided at your polling place.



Follow instructions from election workers to submit your ballot.



We're here to help!



⁽⁴⁾ What is a polling place? How do I find mine?

This is an election term that refers to a place where people may officially vote on Election Day, Nov. 5. Voters are assigned to polling places based on where they live. There are rules and regulations about polling places to ensure they are safe and accessible.

Make sure to verify your polling place before you go to vote on Nov. 5. Visit mnvotes.gov/pollfinder, call 952.924.2503 or scan the QR code below to find your polling place. Your polling place is also included on a postcard mailed to you after you register to vote.



NOTE: Some voters may have city hall as their designated polling place, but **ONLY** those voters can vote at city hall on Nov. 5.

Frequently Asked Questions

Can I bring a translator to my polling place?

Yes. You can bring a trusted friend or family member to help you mark your ballot. In most cases, election workers can also provide you with a translator over the phone.

Can someone else deliver my absentee ballot?

In special situations, you may ask someone to pick up and return an absentee ballot for you. This is called agent delivery. It's reserved for people who are physically unable to go to the polling place due to incapacitating health reasons, disability, group home or treatment center restrictions, or bodily threat.

The agent must have a preexisting relationship with the voter and can't be a candidate or act as an agent for more than three voters per election. Agent delivery is only available beginning seven days before Election Day.

Are yard signs regulated?

Yard signs can't be restricted in size and number beginning 46 days before and up to 10 days after an election. However, they still must follow rules prohibiting their placement on publicly owned land, traffic islands, street signs, traffic signals, fire hydrants, utility poles and anywhere blocking traffic sight lines.

How do I learn more about candidates?

We understand you might be interested in learning more about the candidates on the ballot. In an effort to remain neutral, the city doesn't advertise for or provide background on candidates or political platforms.

We recommend you research candidates using the tools you have available to you. Most candidates have their own websites, print materials and provide contact information for you to connect with them.

I voted absentee. Can I change my vote?

You can ask to cancel your ballot until 5 p.m., Oct. 17. After that time, you can't cancel your ballot. To cancel your ballot, contact the election office that sent your ballot. Your options are to have a new ballot mailed to you, vote early in person at city hall or vote at your polling place on Election Day, Nov. 5.

For questions about what to expect at your polling place on Election Day, flip to next page.

More Questions?

Call: 952.924.2503

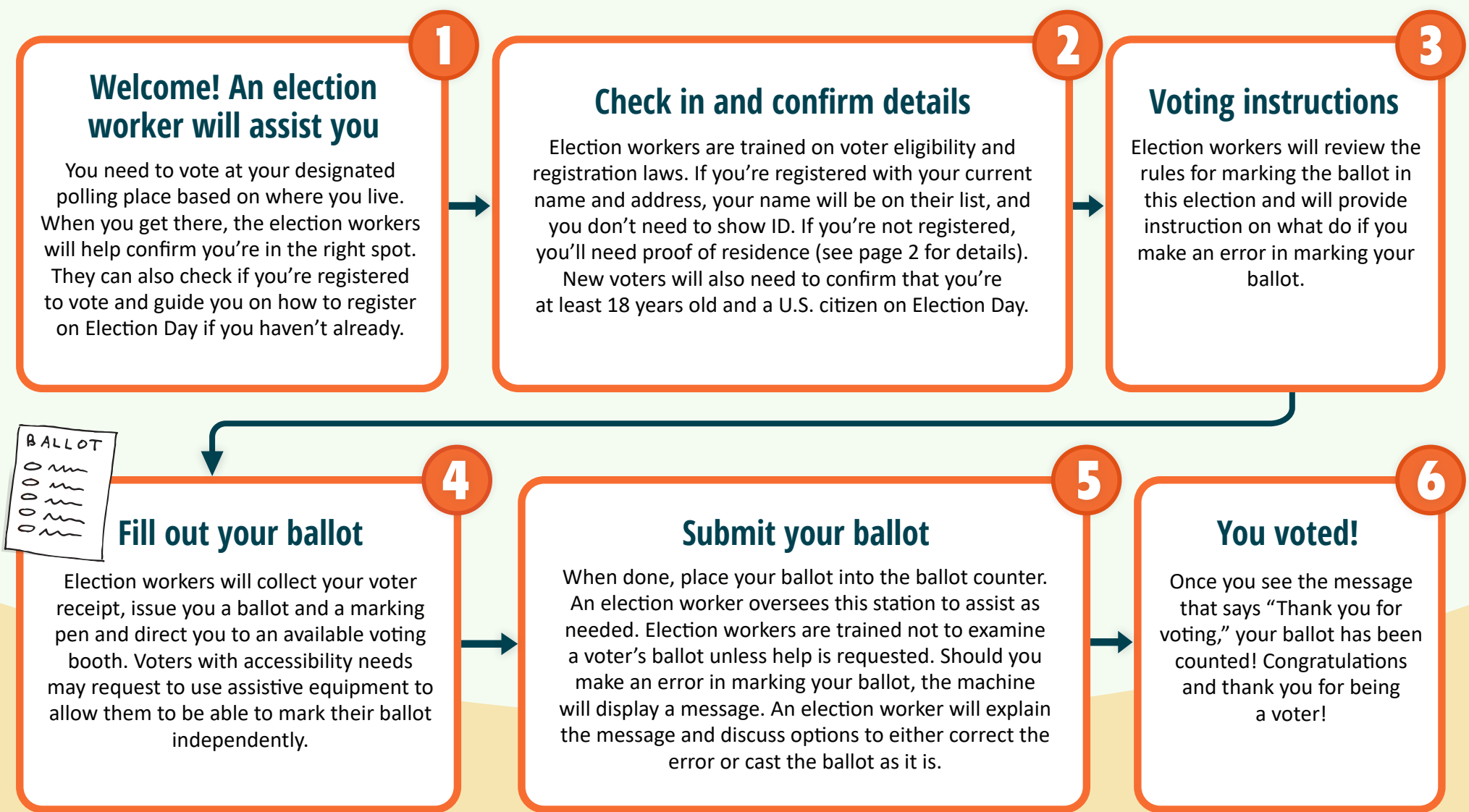
Email: elections@stlouisparkmn.gov

Web: www.stlouisparkmn.gov/vote

Visit: St. Louis Park City Hall
3rd floor, Office of City Clerk
5005 Minnetonka Blvd.
St. Louis Park, MN 55416

Election Day polling place preview

Voting Nov. 5? Here's what you can expect at your polling place

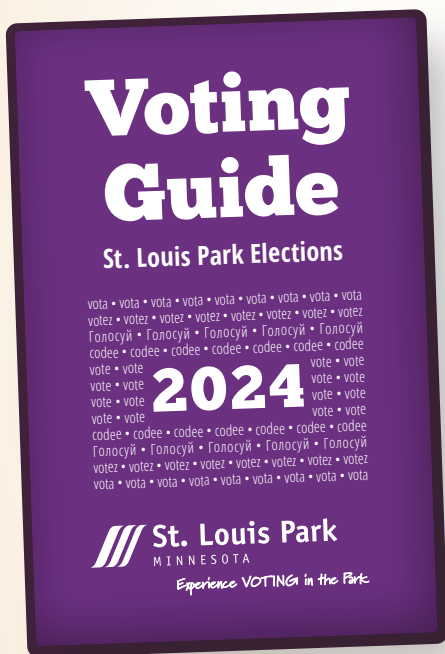


Ways to plan ahead

Check out the city's pocket voting guide

Visit www.stlouisparkmn.gov/vote for this all-digital guide. You can download the guide for quick reference on key election information. It's designed to offer the most important election information in a quick and accessible format.

A limited number of guides were printed and distributed at city events and made available at city facilities. You can request a mailed copy by calling the elections line at 952.924.2503.



Some of our favorite features of this guide include ways to participate in elections, your rights as a voter, detailed lists of documents that may be used to register to vote and much more. Share the guide with neighbors or friends to spread the word about voting!

Read this guide and ask questions

Review the information in this election guide and don't wait to ask questions. The earlier you can identify potential obstacles to voting, the more likely you are to find solutions. Voting is easier if you plan ahead.

View a sample ballot

You can view a sample ballot that is specific to your precinct at city hall or online. It contains all the candidates and races that will be on your official ballot. Use it to help you research the candidates and plan who you will vote for when you participate. Visit myballotmn.sos.mn.gov to find an online sample ballot.

Did my vote count?

If you worry that your absentee ballot didn't get counted, visit mnvotes.sos.mn.gov/abstatus/index to track your ballot status on the Minnesota Secretary of State's website.

Once your absentee vote is processed, election officials will update the website with the confirmation.

NOTE: This only works if you use the ID number and exact spelling of your name as it appeared on your absentee ballot application and signature envelope.



Stay informed

For city events, activities and news, visit www.stlouisparkmn.gov, sign up for text and email notifications, or follow us on social media.

govDelivery www.stlouisparkmn.gov/sign-up

@stlouispark

@stlouispark

nextdoor.com

www.youtube.com/slpcable

@stlouisparkmn

